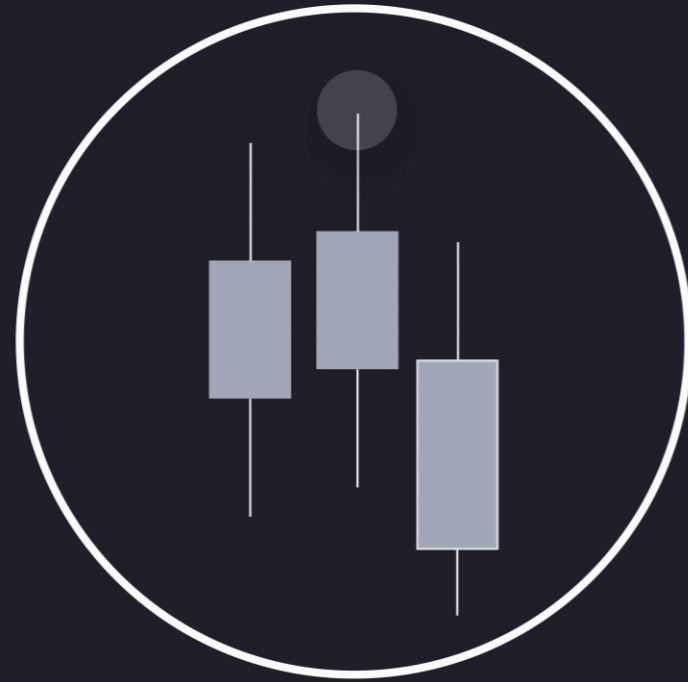


Advanced Market Structure Protected Highs & Lows

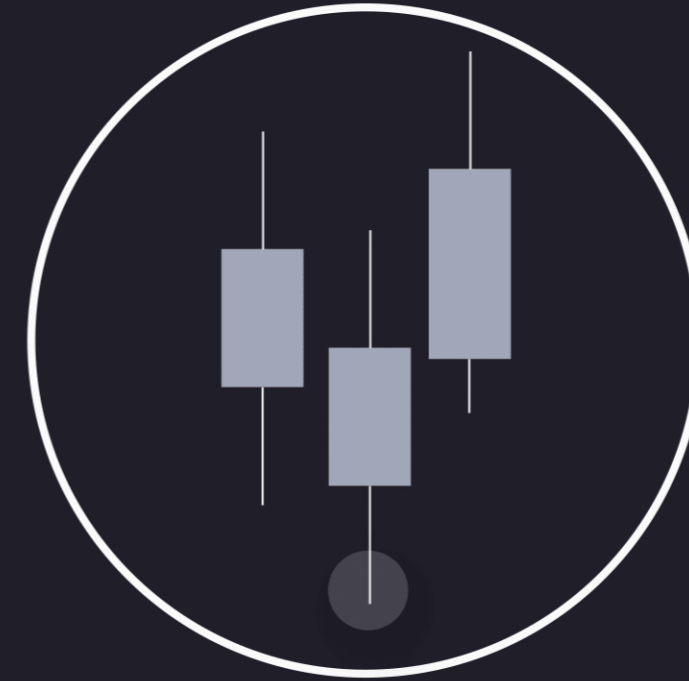
Mastering it will improve your price reading drastically.

Swing High & Swing Low



Swing High

A swing High is characterized by the first candle closing **LOWER** than the middle one, and the one to the right also closing lower.



Swing Low

A swing low is identified when the first candle closes **HIGHER** than the middle one, and the one to the right also closes higher than the middle one.

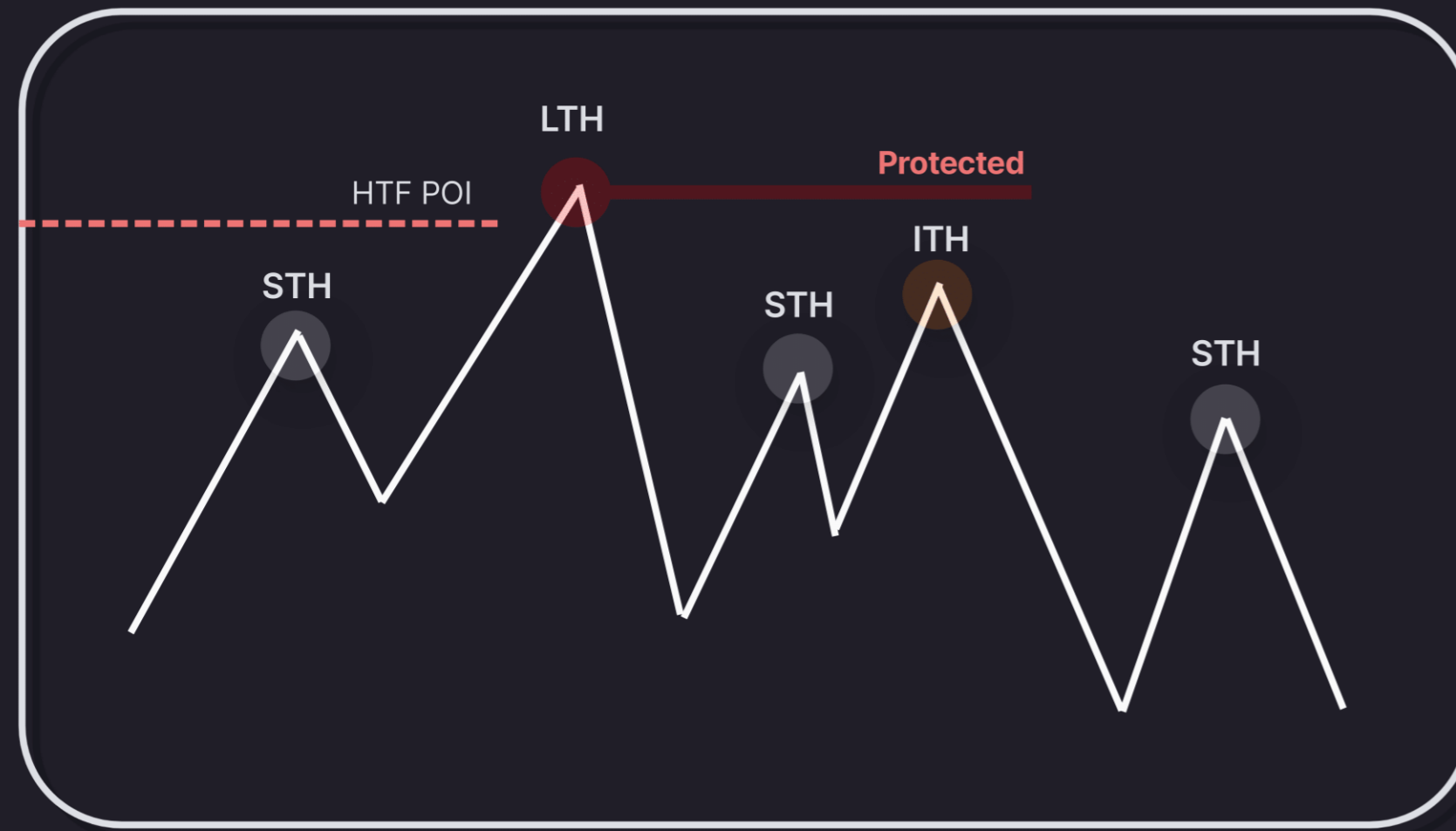
Essential Terms & Information

In Advanced Market Structure, we use the terms Long Term High (**LTH**), Intermediate Term High (**ITH**), and Short Term High (**STH**) for mainly **BEARISH** orderflow. For **BULLISH** orderflow, we refer to Long Term Low (**LTL**), Intermediate Term Low (**ITL**), and Short Term Low (**STL**).

Every single one of those highs or lows is a swing point, but not every one will be protected, allowing you to place your potential stop loss.

Protected Highs & Lows

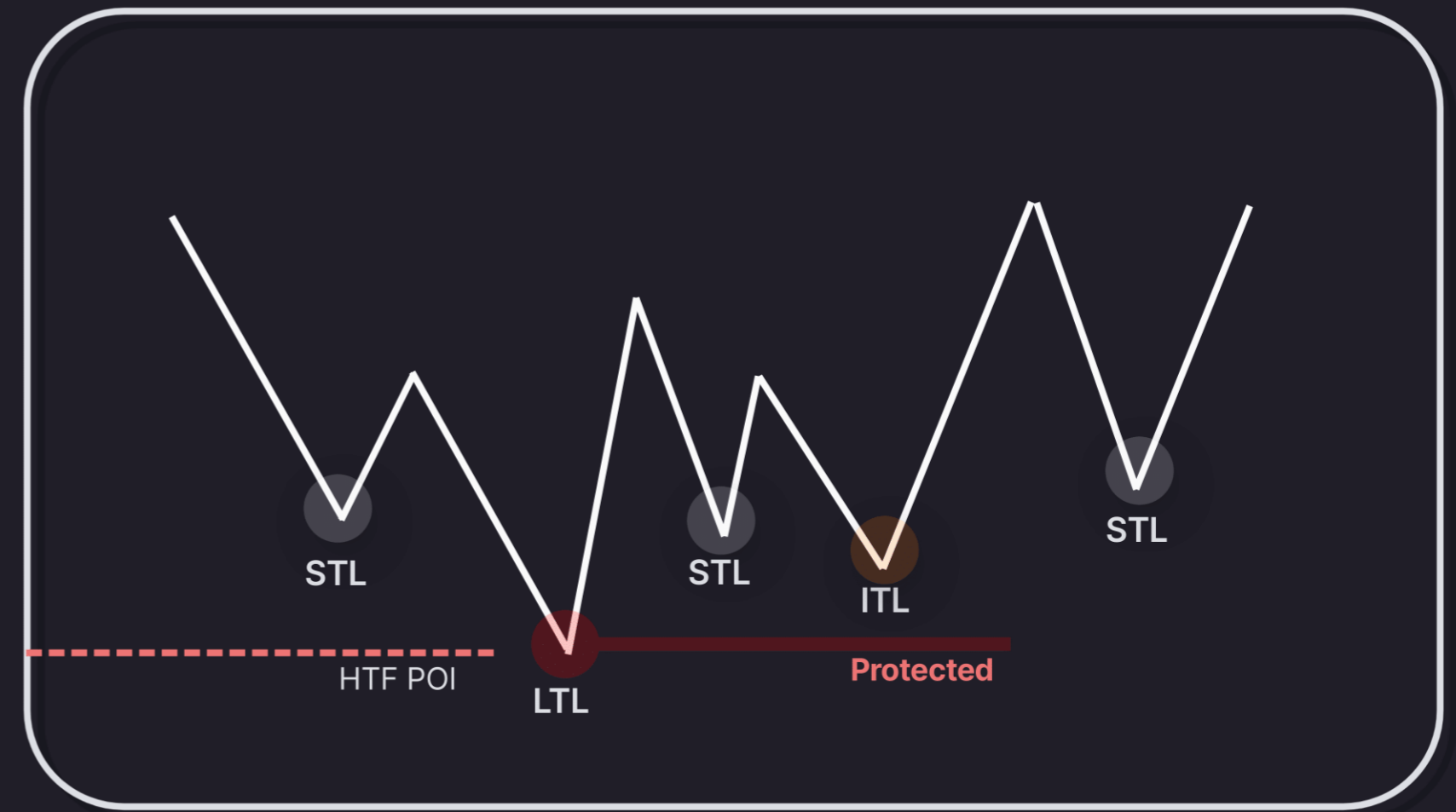
BEARISH SCENARIO



Long Term High (LTH)

- Forms at a Higher Timeframe POI
- Has a Short Term High formed to the left and right of the Long Term High.
- We anticipate that the LTH will not be taken out (Protected).

BULLISH SCENARIO

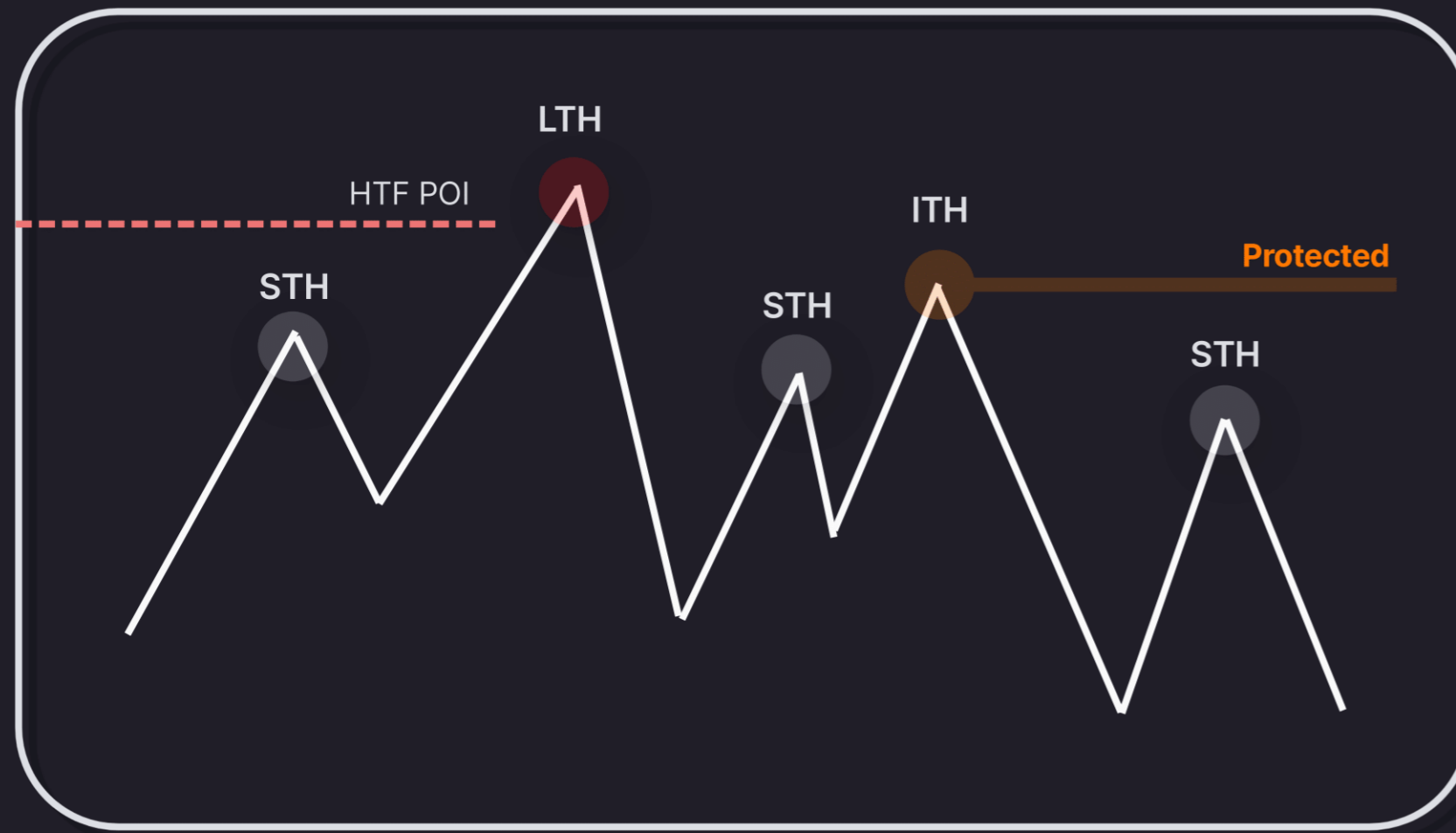


Long Term Low (LTL)

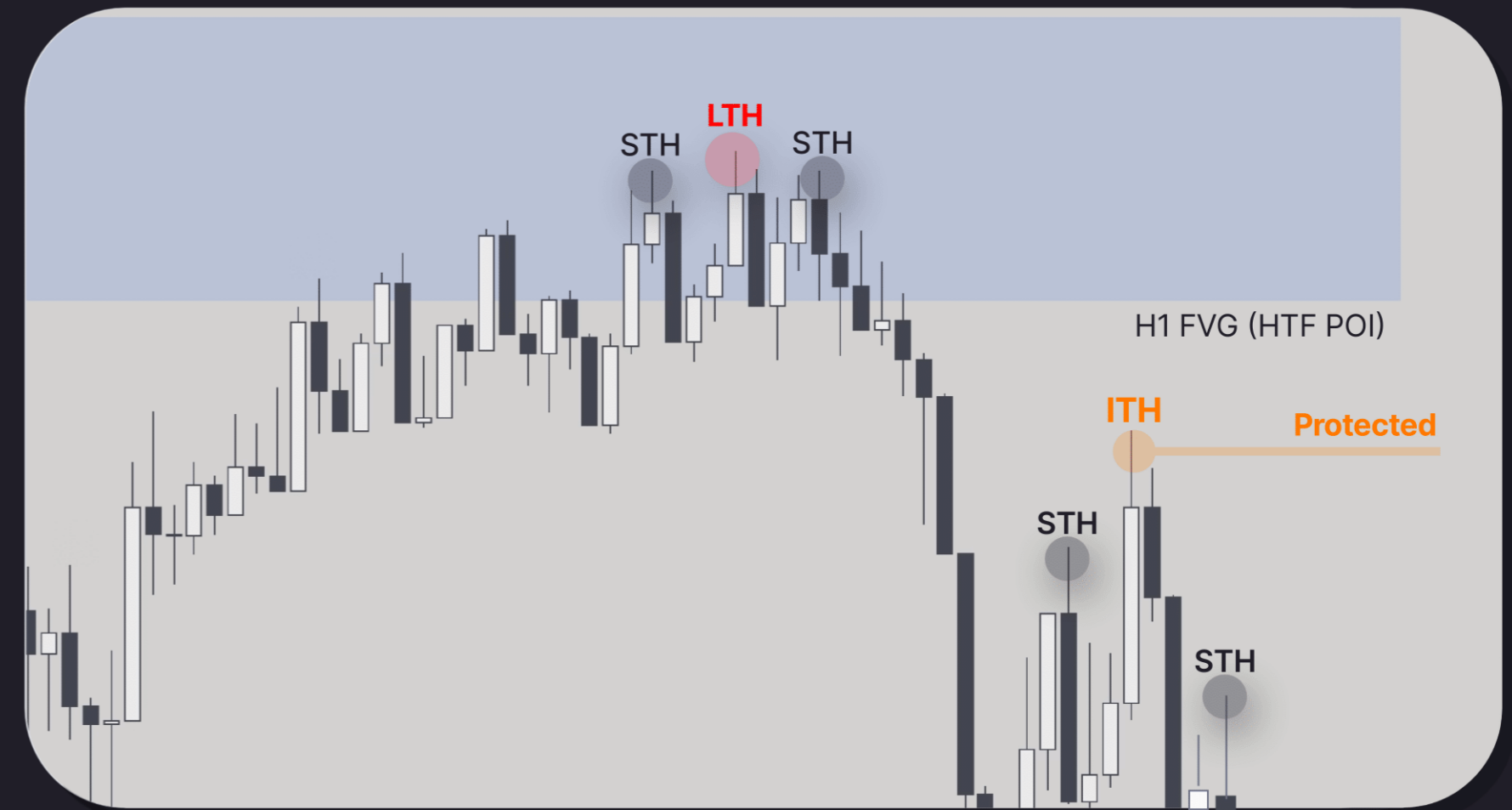
- Forms at a Higher Timeframe POI
- Has a Short Term Low formed to the left and right of the Long Term Low.
- We anticipate that the LTL will not be taken out (Protected).

Protected Highs

BEARISH SCENARIO



Real Chart Example



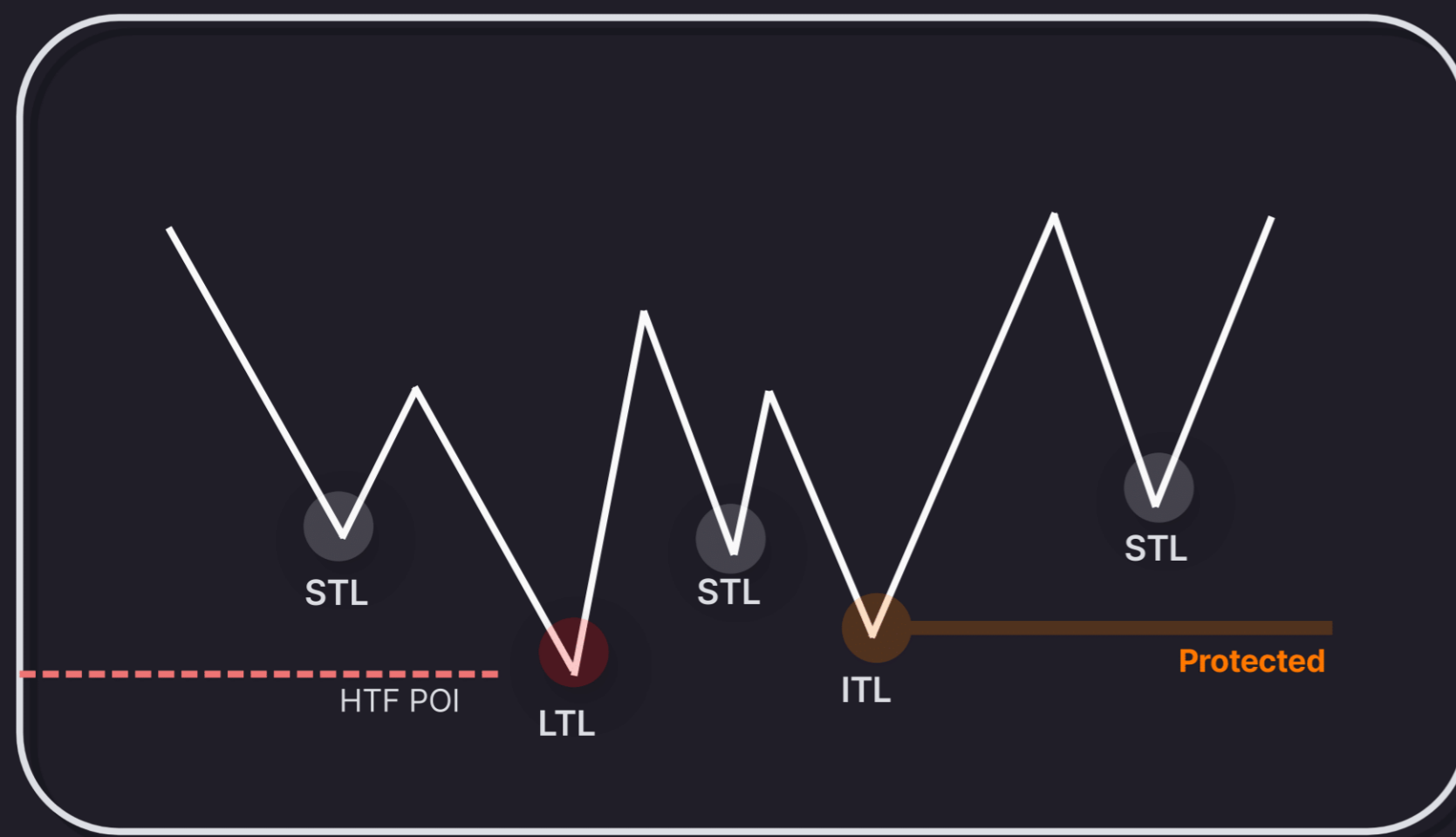
GBPJPY 20/11/2023 - M5

Intermediate Term High (ITH)

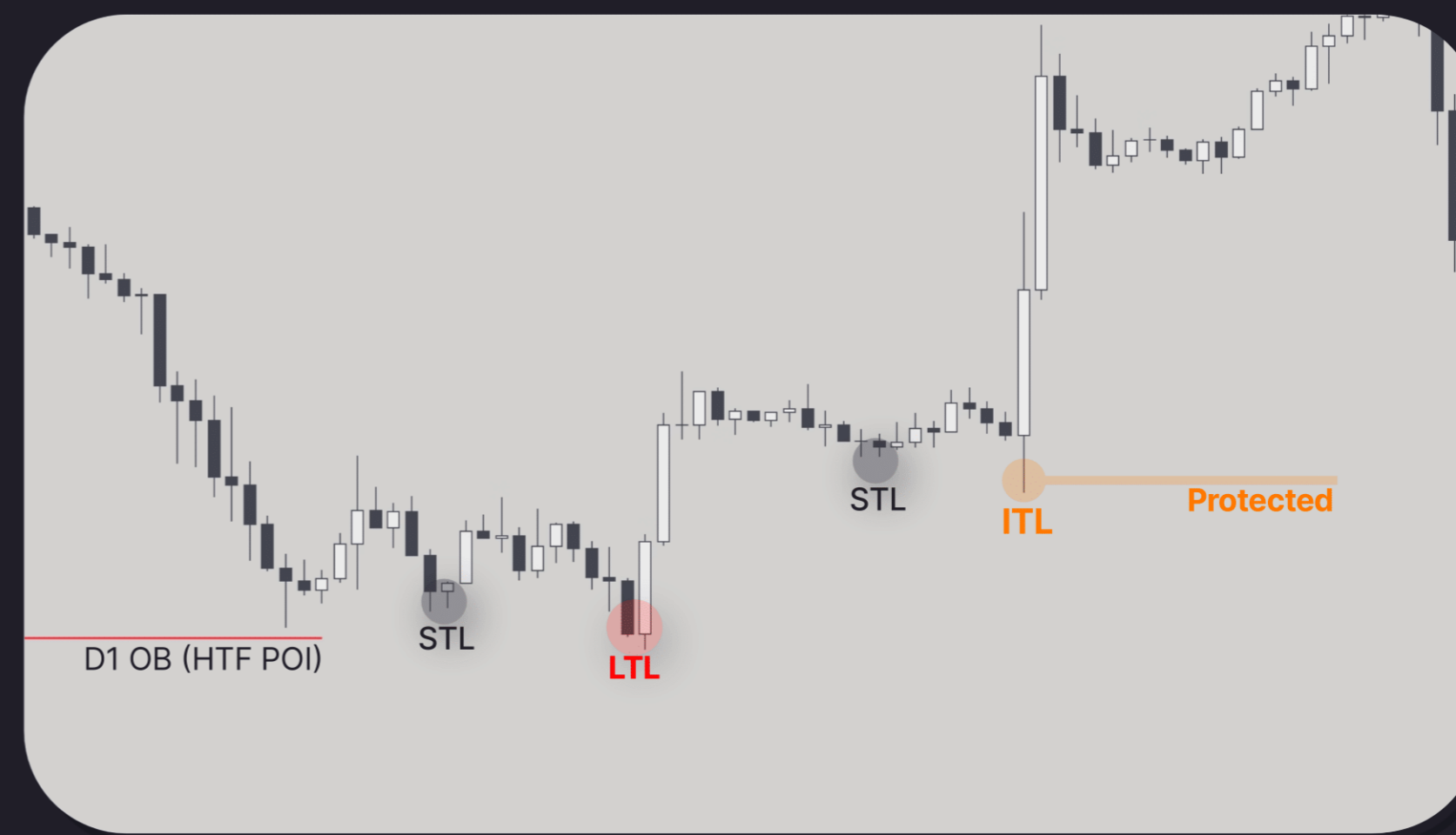
- We need a new swing point that will reach a previous short-term high, creating a potential intermediate-term high.
- The intermediate-term high (ITH) becomes valid once a short-term high is created to the right of it.
- This short-term high to the right of the ITH should serve as our protected high, and it should not be violated. This level can be considered a good placement for a stop-loss.

Protected Lows

BULLISH SCENARIO



Real Chart Example



DXV 06/11/2023 - H1

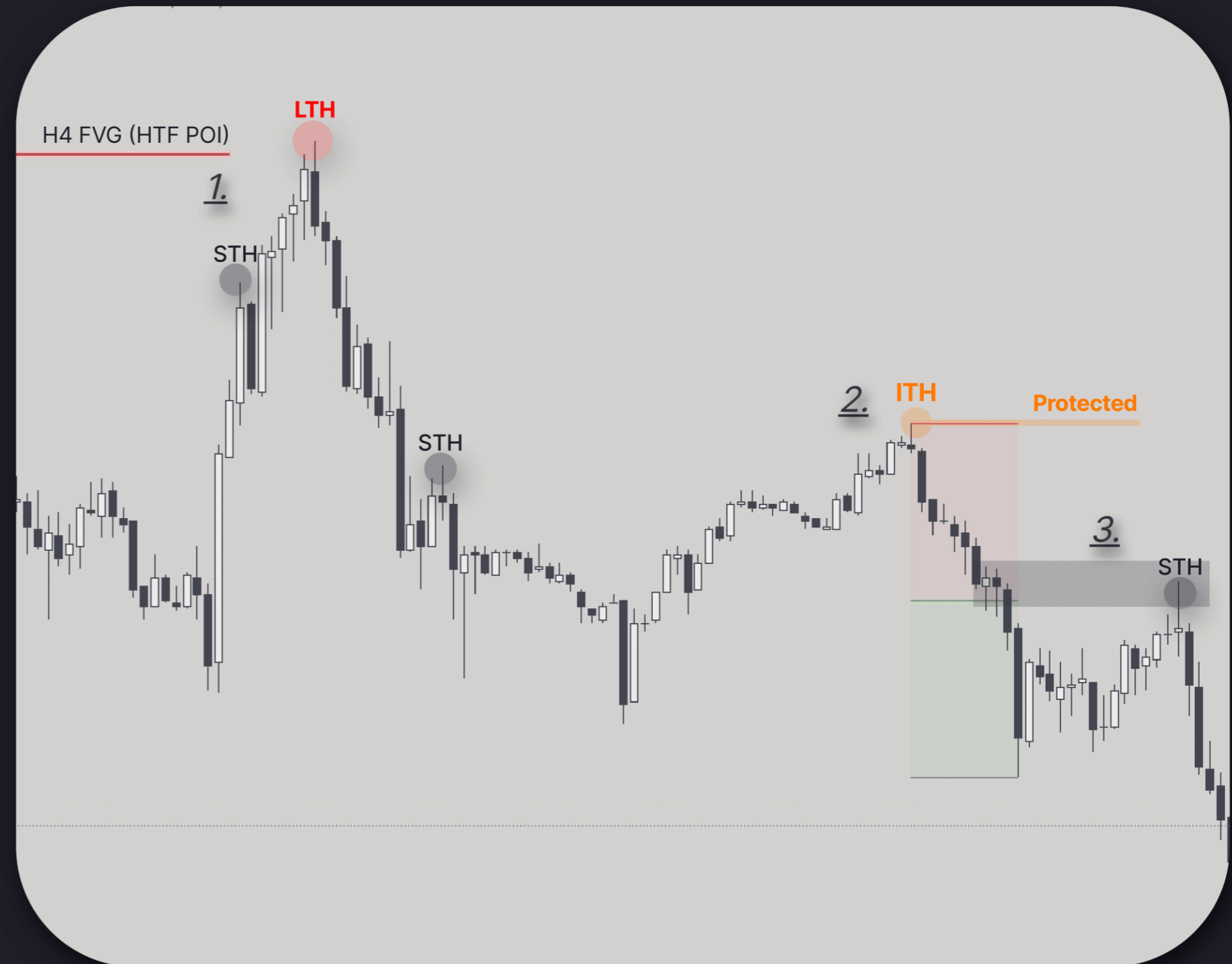
Intermediate Term Low (ITL)

- We need a new swing point that will reach a previous short-term high, creating a potential intermediate-term high.
- The intermediate-term high (ITH) becomes valid once a short-term high is established to the right of it.
- This short-term high to the right of the ITH should serve as our protected high, and it should not be violated. This level can be considered a suitable placement for a stop-loss.

How can you frame a trade setup using those Protected Highs & Lows?

In this case we have a **bearish** scenario.

1. We have a Long Term High Formed at a HTF POI.
2. After the ITH is formed we want a bearish dealing range to form. That means we need a swing low form, after the Intermediate Term high.
3. Using that dealing range, we wait for a Premium PD array to hit, and target opposing liquidity.
4. If you are on the right side of the orderflow this will work 90% of the times.



USOIL 15/11/2023 - M15