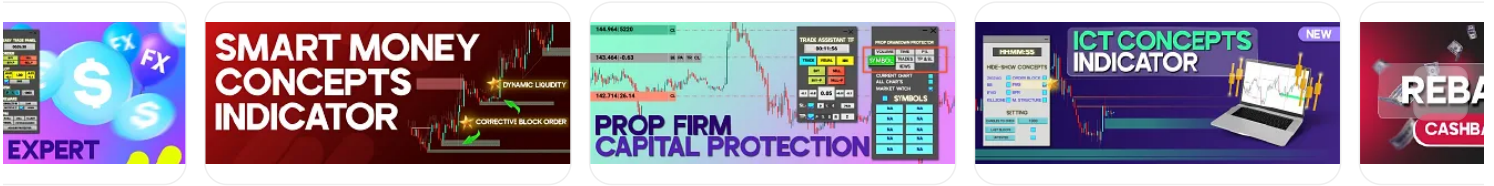


Sponsored By PocketOption



TradingFinder > Education > Forex Education > Fast Scalping AI Indicator; Trading with Orde...

Fast Scalping AI Indicator; Trading with Order Flow Analysis in NinjaTrader

Categories: Forex Education Indicators Education

Article Level: Intermediate



Writer: Nino Gogochashvili



Reviewer: Davit Kvaratskhelia



Fact checker: Ram Nisha



Modified: Dec 1, 2025

Comments: 0

Views: 4,286

17 Min

In scalping, any delay in detecting **momentum** shifts can lead to missed profitable opportunities. The Fast Scalping Indicator for NinjaTrader transforms order flow and micro-market fluctuations into reactive signals within the **NinjaTrader 8** environment.

This tool utilizes adaptive models to identify entry and exit zones in short-term timeframes, aiming to enhance precision under volatile conditions.

In practice, the Fast Scalping Indicator analyzes the **real-time market structure** instead of relying on lagging averages, estimating short-term price direction with high speed.



How to use the Fast Scalping AI Indicator in Forex

What Is the Fast Scalping AI Indicator?

The Fast Scalping AI Indicator is a reactive tool for short-term market analysis within the NinjaTrader platform. It processes live price and volume data to detect momentum changes and order-flow shifts.

In its internal structure, the indicator uses real-time volume processing to compare each candle's price behavior pattern with previous data, identifying potential reversal or continuation points.

The primary purpose of FastScalpingAI is to provide precise entry and exit zone detection in short-term timeframes—especially 1- to 5-minute charts—where quick reactions to order-flow shifts can mean the difference between a successful trade and a premature entry.

The indicator also uses "**Level 2 data**" to read market-depth information and liquidity flow.



One-minute timeframe for identifying entry and exit zones with the Fast Scalping AI Indicator in Forex

Compatibility of the Fast Scalping AI Indicator with NinjaTrader

The Fast Scalping AI Indicator is specifically designed for the NinjaTrader platform and is fully compatible with its data architecture.

Additionally, to prevent license-related errors, users must enter activation details in the Licensing section so that the indicator can access the core computation engine.

Tutorial video for indicator activation in NinjaTrader from DayTradeToWin YouTube channel:

NinjaTrader - How to Install and Activate Indicators and Software

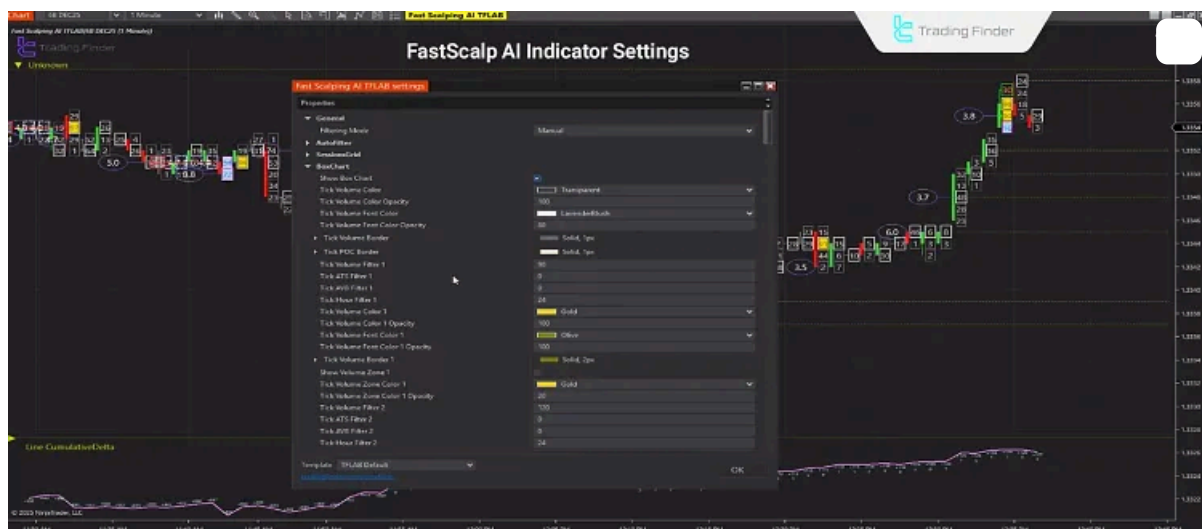


Installation and Setup Steps for the Fast Scalping AI Indicator

To set up the Fast Scalping AI Indicator in NinjaTrader, add the indicator file to the platform and, after activation, apply it to your chosen chart.

Once installed, the indicator automatically appears in the list of analytical tools, where you can modify settings such as session display, volume levels, and filtering mode according to your trading style.

Proper execution of these steps ensures accurate market-data processing and highly precise signal visualization on the chart.



Settings tailored to the trader's style in the Fast Scalping AI Indicator

How to Trade Using the Fast Scalping AI Indicator?

Trading with the Fast Scalping AI Indicator is based on quick reactions to shifts in order flow and short-term market momentum.

Effective use of this indicator is not limited to receiving buy or sell signals—it also involves understanding market conditions, filtering out price noise, and setting exit levels according to momentum strength.



How to trade using the Fast Scalping AI Indicator to receive buy and sell signals

Setting the Timeframe for Scalping

In scalping strategies, selecting the right timeframe is one of the key factors affecting signal accuracy and result consistency.

The Fast Scalping AI Indicator is designed to operate based on **"tick data"** and short-term momentum shifts; therefore, its performance directly depends on the chart's timeframe.

On a 1-minute timeframe, the indicator exhibits the highest sensitivity to price changes and generates more frequent signals. This interval suits traders with high focus who operate in high-liquidity environments, such as the New York or London sessions.



Enhanced performance of the Fast Scalping AI Indicator on the 1-minute timeframe

Detecting Entry Zones with FastScalpingAI Signals

The Fast Scalping AI Indicator in NinjaTrader identifies entry zones by combining three key factors: short-term momentum, real-time volume shifts, and the direction of order flow.

The indicator displays the volume level numerically, providing insight into the intensity of buying or selling pressure.

A high number indicates buying pressure and the potential start of a bullish wave, while a low number signals increasing selling pressure and a possible short-term pullback or bearish move.

For a valid entry, the signal must coincide with both rising volume and a confirming candle; otherwise, there is a higher risk of premature entry.

Example of Entry

After the price interacts with a "**previous volume spike**" on the Fast Scalping AI Indicator, traders should wait for the formation of a new, stronger volume surge.

When this new volume appears in the same zone and aligns with a positive price reaction, it can be treated as buy confirmation.

This indicates an inflow of fresh liquidity and the presence of organized buyers, typically leading to a low-risk, short-term bullish move in lower timeframes.



Price reacting to previous volume and forming new volume for entry using the Fast Scalping AI Indicator

Defining Stop Loss Based on Signal Structure

In the Fast Scalping AI system, stop loss is determined not by a fixed distance or percentage, but according to the signal structure and momentum behavior.

- ⚡ For **long trades**, the stop loss is usually placed below the latest reversal zone or confirmation candle—precisely where the indicator shows low volume in an uptrend;
- ⚡ For **short trades**, the stop loss is placed above the latest bearish reversal area.

Exit Strategy Based on Momentum Behavior

Within the Fast Scalping framework in NinjaTrader, exiting a position should occur simultaneously with a decline in momentum or a drop in the indicator's value. This usually signals weakening buying or selling pressure and the start of a short corrective phase.

In practice, the best exit timing is when the indicator begins to neutralize its signal and the candles reflect lower volume. Staying in a trade beyond this stage increases the risk of price reversal and loss of profit.

In summary, the exit strategy in this system is based on qualitative momentum shifts, not static numerical levels.



Timing exits after volume decreases in the Fast Scalping AI Indicator

Executing Multiple Positions Simultaneously with Sequential Signals

During strong and continuous market trends, the Fast Scalping AI Indicator often generates multiple consecutive signals in the same direction. This repetition indicates the continuation of order flow and sustained momentum.

In such cases, the trader may apply a Position Scaling approach—entering multiple trades progressively. With each new confirmed signal, the trader can either increase position size or adjust the average entry price.

The main requirement for this method is maintaining a balanced ratio between open risk and total stop distance, ensuring that margin pressure does not increase.

For managing simultaneous positions, it is best to use a "**Trailing Stop**". Instead of assigning separate stop levels for each position, this method creates a dynamic stop loss based on the latest signal or active momentum zone.

When momentum weakens or the zone color changes, all positions close synchronously.

Counter-Trend Scalping with FastScalpingAI

The counter-trend strategy in this indicator is based on detecting divergence between momentum and price. When the price continues trending but the indicator shows momentum weakening, the likelihood of a short-term correction increases.

In such situations, the Fast Scalping AI Indicator issues a reversal alert by reducing its volume reading.

This type of signal usually appears near price exhaustion levels or areas with declining trade volume.

Counter-trend entries should be taken with smaller position sizes and shorter targets, as the goal is to capture quick corrective moves rather than full reversals.



Momentum and price divergence in a bearish trend leading to a buy signal in the Fast Scalping AI Indicator

Optimizing Indicator Performance Across Trading Sessions

The behavior of the **Fast Scalping AI Indicator** is strongly influenced by market volume and volatility during different trading sessions. Since it analyzes real-time order flow and momentum data, adjusting its parameters for each session is crucial for accuracy.

During the **London session**, where liquidity is high and price movements are fast, the filter sensitivity should be set higher to allow quicker response to volume changes. [Education Source for Forex session timing](#) in babypips.com website can be seen in the picture below:

LOCAL TIME	EST	UTC
Sydney Open – 7:00 AM Sydney Close – 4:00 PM	4:00 PM 1:00 AM	9:00 PM 6:00 AM
Tokyo Open – 9:00 AM Tokyo Close – 6:00 PM	7:00 PM 4:00 AM	12:00 AM 9:00 AM
London Open – 8:00 AM London Close – 5:00 PM	2:00 AM 11:00 AM	7:00 AM 4:00 PM
New York Open – 8:00 AM New York Close – 5:00 PM	8:00 AM 5:00 PM	1:00 PM 10:00 PM

Opening and closing times of major Forex sessions; Source: babypips

In the **New York session**, due to overlap with London and increased volatility, higher **volume filters** are recommended to reduce Level 2 data noise.

In contrast, during the **Asian session**, where trading volume and speed are lower, reducing sensitivity helps eliminate false signals and ensures more stable indicator output.



Adjusting parameters and strategies using session display in the Fast Scalping AI Indicator

Manual, Auto, and AI Modes in the Fast Scalping Indicator

The **Fast Scalping AI Indicator** operates in three distinct modes, each offering different levels of control and data processing:

- ⚡ **Manual Mode:** All parameters such as filters and volume thresholds are manually adjusted by the trader. Ideal for professional users seeking precise control over the indicator's behavior;
- ⚡ **Auto Mode:** The indicator automatically adjusts filters in real time according to market volatility and volume, providing fast reactions to order-flow shifts;
- ⚡ **AI Mode:** Analyzes previous data and Level 2 order information to predict potential entry and exit zones.

A summary of each mode's settings can be found under the **"Report"** section, beneath the **"TradingFinder"** logo. From there, users can also export results directly as an Excel Report if needed.

Risk Management in the Fast Scalping AI Indicator

In scalping, risk control is critical due to the high speed of execution and trade frequency. The Fast Scalping AI Indicator enables real-time, data-driven risk management by continuously analyzing momentum and order flow.

Trade volume is determined based on current market volatility and signal strength. When the indicator displays strong buying or selling pressure, position size can be gradually increased; however, in noisy or low-volume conditions, position size must be reduced.

Using an adaptive stop loss and a fixed risk per trade (for example, 0.5%–1% of total capital) helps maintain scalping efficiency while avoiding cumulative small losses.

Advantages and Limitations of the Fast Scalping AI Indicator

The Fast Scalping AI Indicator is one of the most responsive scalping tools available in NinjaTrader 8, generating real-time reactive signals through tick data and momentum analysis.

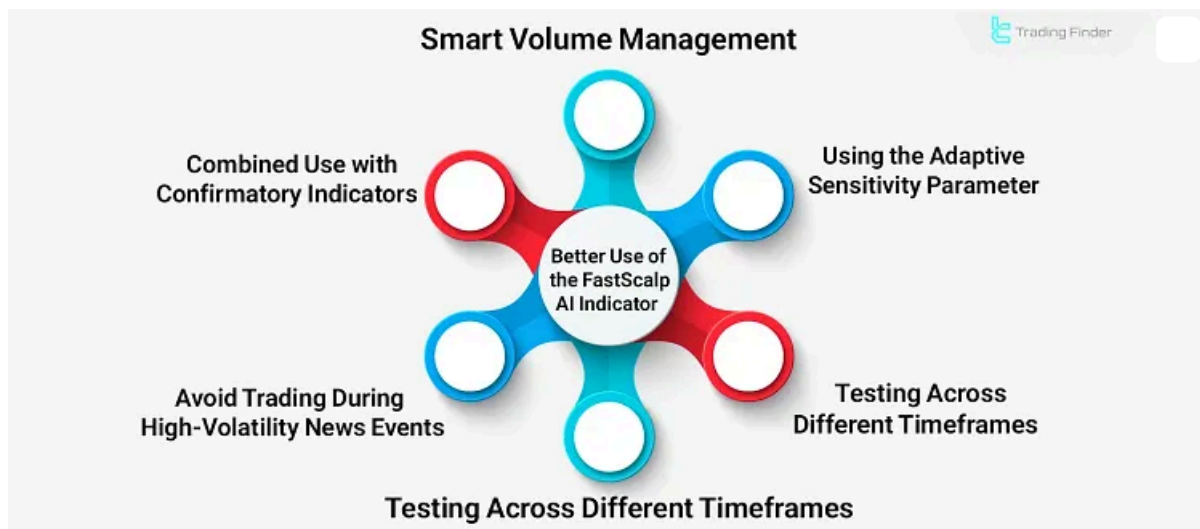
Its performance varies depending on market conditions and the trader's experience.

Limitations	Advantages
High dependency on data quality	Real-Time Order Flow Analysis
Excessive signals during high volatility	Adaptive Signal Generation
Ineffective on higher timeframes	High Precision in Reversal Detection
Requires experience in signal interpretation	Smart Parameter Configuration
Limited performance in low-volume markets	Full Compatibility with NinjaTrader 8
No official support from some brokers	Integration with Other Indicators
—	Usable in Backtesting and Strategy Optimization

Tips for Optimal Use of the Fast Scalping AI Indicator

The efficiency of the Fast Scalping AI Indicator depends not only on the algorithm’s power and signal accuracy but also on the trader’s setup and usage method.

To achieve consistent and reliable results, parameters must be aligned with actual market conditions, trade volume, and session timing.



Professional tips for improving the use of the Fast Scalping AI Indicator

Key Professional Guidelines:

- ⚡ **Combine with Confirmatory Indicators:** Use complementary tools such as **VWAP**, **EMA**, or **Volume Profile** to confirm trend direction and trading volume;
- ⚡ **Avoid Trading During High-Impact News:** During macroeconomic announcements or volatile events, temporarily filter out FastScalpingAI signals, as market noise increases and signals become unstable;

- ⚡ **Analyze Trading Logs:** After each session, review signal logs and trade results to optimize **Sensitivity** and **Signal Filter** parameters based on real market behavior;
- ⚡ **Test Across Multiple Timeframes:** For each instrument (e.g., NASDAQ, EUR/USD), determine its optimal timeframe since indicator reactions differ between fast and slow markets;
- ⚡ **Adjust Filter Sensitivity Dynamically:** Increase sensitivity during active sessions and reduce it in calmer markets to avoid false signals;
- ⚡ **Apply Smart Position Sizing:** Match trade volume to signal strength and stop-loss distance to maintain a balanced risk-to-reward ratio;

Conclusion

The Fast Scalping AI Indicator is a reactive and high-speed tool for scalping in NinjaTrader, designed to pinpoint accurate entry and exit zones using volume, order flow, and Level 2 data.

Its main advantage lies in its processing speed and near-instant signal visualization—visual adjustments occur almost immediately, while volume calculations refresh with minimal latency.

For optimal performance, filter sensitivity should be adapted to the market session's liquidity level; during sessions like New York, higher filters typically deliver more accurate results.

Ultimately, Fast Scalping AI performs best when combined with risk management and volume-based market analysis.



Fast Scalping AI Indicator Tutorial PDF

Click to download Fast Scalping AI Indicator Tutorial PDF

Download PDF

Quiz

5 Questions

Q1: What is the primary advantage of the Fast Scalping AI Indicator compared to traditional indicators?

- 1. It uses lagging averages for more stable signals
- 2. It analyzes real-time market structure instead of relying on lagging averages
- 3. It only works on higher timeframes for better accuracy

Q2: Which timeframes are most suitable for the Fast Scalping AI Indicator?

- 1. 15-minute to 1-hour charts for stable signals
- 2. 1-minute to 5-minute charts for quick reactions

3. Daily and weekly charts for long-term analysis

Q3: How should stop loss be determined when using the Fast Scalping AI system?

1. Based on signal structure and momentum behavior rather than fixed distances

2. Always set at exactly 2% below entry price

3. Using a fixed 10-pip distance for all trades

Q4: What does a high numerical volume level indicate in the Fast Scalping AI Indicator?

1. Selling pressure and potential bearish movement

2. Market consolidation with no clear direction

3. Buying pressure and potential start of a bullish wave

Q5: Which trading session requires higher filter sensitivity settings for optimal performance?

1. Asian session due to lower volatility

2. London session due to high liquidity and fast price movements

3. All sessions require identical filter settings

Check Result

FAQs

What is the Fast Scalping AI Indicator? ∨

It is a reactive indicator for NinjaTrader that analyzes real-time price and volume data to detect momentum shifts and order flow. It visually displays buy/sell signals in real time and is designed specifically for scalping. ∨

What type of trading is it suitable for? ∨

FastScalpingAI is built for ultra-short-term scalping, where decisions must be made within seconds. It performs best on 1-5 minute charts and reacts rapidly to price changes. ∨

Is the indicator suitable for all asset classes? ∨

Yes, but it delivers the highest accuracy and stability on high-liquidity assets, such as major indices (NASDAQ, DAX) and currency pairs (EUR/USD, GBP/USD). In low-volume markets, signals may become noisy. ∨

How does the indicator display buy and sell signals? ∨

Signals appear as colored zones or arrows on the chart green for buying pressure and red for selling strength. ∨

These changes occur when order flow or momentum direction shifts. ∨

How does it differ from traditional indicators like EMA? ∨

 **5** From 5.0

(1)

Rate this post



0 Comment

[Write a comment](#)

Top Posts



Break of Market Structure (BOS)...
Dec 22, 2024 33,510 Views

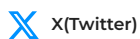


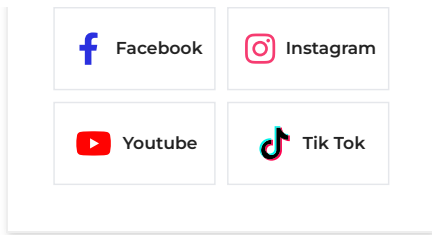
Turtle Soup Strategy;...
Dec 23, 2024 37,545 Views



What is an ICT Order Block an...
Dec 23, 2024 42,959 Views

Our Social Media





Latest Articles



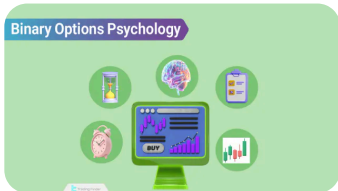
Forward Test: How to Forward Test Trading Strategies

Forex Education Dec 5, 2025



What Is a Trading Style? Types of Trading Styles in Financial Markets

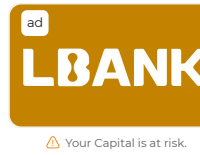
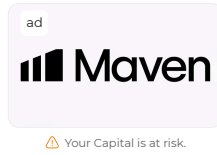
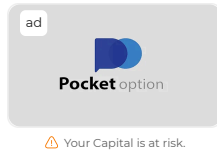
Forex Education Nov 28, 2025



Trading Psychology in Binary Options: Mastering Emotions in Trading

Forex Education Nov 25, 2025

Trade With The Recommended Service



Complete training in financial markets such as "Forex," "Stock Market," and "Cryptocurrencies" only becomes comprehensive with tested trading tools and strategies. "Trading Finder," with its experience, aids traders and investors in gaining a correct understanding and deep learning. The training programs are designed based on tools for traders of all levels, from "beginner to advanced."



English (EN) [dropdown arrow]

About Us

Our Team

Advertisement

Indicators & Oscillators

Trading Tools

Contact Us

Jobs

Affiliates

Products

Trading Tools

Forex Methodology

Report a Bug

Our Scores

Financial Market Education

Risk Disclosure: Futures and forex trading contains substantial risk and is not for every investor. An investor could potentially lose all or more than the initial investment. Risk capital is money that can be lost without jeopardizing one's financial security or lifestyle. Only risk capital should be used for trading and only those with sufficient risk capital should consider trading. Past performance is not necessarily indicative of future results.

Hypothetical Performance Disclosure: Hypothetical performance results have many inherent limitations, some of which are described below. No representation is being made that any account will or is likely to achieve profits or losses similar to those shown; in fact, there are frequently sharp differences between hypothetical performance results and the actual results subsequently achieved by any particular trading program. One of the limitations of hypothetical performance results is that they are generally prepared with the benefit of hindsight. In addition, hypothetical trading does not involve financial risk, and no hypothetical trading record can completely account for the impact of financial risk of actual trading. For example, the ability to withstand losses or to adhere to a particular trading program in spite of trading losses are material points which can also adversely affect actual trading results. There are numerous other factors related to the markets in general or to the implementation of any specific trading program which cannot be fully accounted for in the preparation of hypothetical performance results and all which can adversely affect trading results.

Testimonials Disclosure: Testimonials appearing on this website may not be representative of other clients or customers and are not a guarantee of future performance or success.

General Disclosure & Limitation of Liability: TradingFinder.com offers information for educational purposes only and is not responsible for any financial losses or decisions made based on its content. We may earn revenue through advertising, partnerships, or product sales, but this does not affect our independence or transparency. Trading involves risk, and past performance does not guarantee future results.

Privacy Policy

[Risk Warning](#)

[Cookies Policy](#)

[Copyright and Idea Submissions](#)

[Terms and Conditions Agreement](#)

© 2025 TradingFinder, All rights reserved.