

smGoldenCrossTrend Indicator_v2.2

MetaTrader 4 (MT4) indicator
Developed by

George aka SwingMan

Manual compiled by EN
September 14, 2025

Contents

1	Introduction	2
2	Key Features	2
3	Installation and Setup	2
4	Core Logic	3
4.1	Trend Determination	3
4.2	Visual Elements	4
5	Multi-Timeframe Analysis	4
5.1	Alignment Rules	4
6	The Comments Panel	4
6.1	Panel Format	5
6.2	Real-World Examples	5
7	Forecasting Levels	5
8	Input Parameters	6
9	Best Practices	6
10	Summary	7

1 Introduction

The **smGoldenCrossTrend** is a custom MetaTrader 4 (MT4) indicator developed by George (SwingMan). Designed for use across various asset classes, including forex, cryptocurrencies, commodities, stocks, and indices—it provides traders with a straightforward yet robust tool for identifying trend direction, potential reversals, and dynamic support/resistance levels. By leveraging weighted averages of open and close prices, the indicator helps filter noise, align multi-timeframe analysis, and generate actionable signals without repainting, ensuring reliable backtesting and live trading.

This guide covers installation, configuration, core functionality, and best practices to help you integrate the indicator into your trading strategy effectively.

2 Key Features

- **Trend Detection:** Identifies bullish (LONG) or bearish (SHORT) trends using the relationship between open and close price averages.
- **Multi-Timeframe Analysis:** Incorporates higher, current, and lower timeframes for comprehensive market bias, primary signals, and entry filters.
- **Dynamic Support/Resistance:** Displays levels that serve as bounce points (LONG) or rejection zones (SHORT).
- **Comments Panel:** A customizable on-chart panel for quick signal summaries and buffer distances.
- **Forecasting Tools:** Projects potential reversal levels for precise stop-loss and trailing exit placement.
- **Non-Repainting:** All calculations are historical and fixed, supporting accurate strategy testing.

3 Installation and Setup

1. Download and Install:

- Obtain the `.ex4` file from the provided source.(**first link in the post**)
- Copy it to your MT4 data folder: `MQL4 > Indicators`.
- Restart MT4 or refresh the Navigator panel (right-click > Refresh).

2. Attach to Chart:

- Open a chart (e.g., `GBPUSD H4` or `ETHUSD H4`).

- Drag the `smGoldenCrossTrend` indicator from the Navigator to the chart.
- Confirm the attachment in the pop-up dialog.

3. Initial Configuration:

- In the indicator settings dialog:
 - Set `MA_Period` to 5 (default).
 - Select `MA_OpenClose_Method` as LWMA (Linear Weighted Moving Average; ideal for volatile market).
 - Enable `Show_Comments` for the signal panel.
 - Set `Draw_MiddleAveragesLine` to `true` to display the colored trend line.
 - Optionally enable arrows or forecasting features for enhanced visuals.
- Click OK to apply. The indicator will appear as a line on the chart with optional overlays.

Pro Tip: Test on a demo account first to familiarize yourself with the visuals.

4 Core Logic

The indicator's foundation is a comparison of two moving averages calculated over the specified `MA_Period`:

- **Open Average:** Represents initial bar sentiment (potential direction at open).
- **Close Average:** Reflects end-of-bar commitment (actual price action resolution).

4.1 Trend Determination

- **LONG (Bullish):** $\text{Close Average} \geq \text{Open Average}$ (upward momentum confirmed).
- **SHORT (Bearish):** $\text{Close Average} < \text{Open Average}$ (downward pressure dominant).
- **Crossovers:**
 - **Golden Cross:** Open Average crosses above Close Average → Potential buy signal (trend shift to LONG).
 - **Death Cross:** Open Average crosses below Close Average → Potential sell signal (trend shift to SHORT).

4.2 Visual Elements

- **Middle Line (Trend Line):** A central line colored based on the dominant trend:
 - **Aqua:** LONG (uptrend).
 - **Orange:** SHORT (downtrend).
- Optional overlays include raw Open/Close averages (if **Draw_MovingAverages** is enabled) and crossover arrows.

5 Multi-Timeframe Analysis

To avoid false signals, the indicator supports alignment across three timeframes:

- **Higher Timeframe (HTF):** E.g., D1 for overall market bias (macro trend).
- **Current Timeframe (CTF):** E.g., H4 for primary entry/exit signals.
- **Lower Timeframe (LTF):** E.g., H1 for fine-tuned entry filters (pullback confirmation).

5.1 Alignment Rules

- **Confluence:** All three timeframes show the same trend direction → High-probability setup (e.g., enter LONG on LTF dip if HTF/CTF are LONG).
- **Divergence:** Mixed signals → Exercise caution; expect pullbacks or ranging conditions. Wait for alignment before trading.

Example Workflow:

1. Check HTF for bias (e.g., D1 LONG → Favor buys).
2. Confirm CTF signal (e.g., H4 Golden Cross).
3. Use LTF for timing (e.g., H1 bounce off support).

6 The Comments Panel

When **Show_Comments** is enabled, a compact panel appears in the top-left corner of the chart, titled “**Trend Close CROSS-VALUE**”. It summarizes trend status, crossover threshold—ideal for quick scans.

6.1 Panel Format

- **LONG C=< [Threshold Price]**: Uptrend active; close below this level flips to SHORT. Buffer shows potential reward (e.g., +36 pips).
- **SHORT C=>< [Threshold Price]**: Downtrend active; close above this level flips to LONG. Buffer shows risk to reversal (e.g., -25 points).

6.2 Real-World Examples

Example 1: GBPUSD H4 (Current Price: 1.35592)

D1: LONG C=< 1.35233 (+36 pips buffer) Daily support holds macro uptrend.

H4: LONG C=< 1.35529 (+6 pips buffer) Primary support for entry on dips.

H1: LONG C=< 1.35583 (+1 pip buffer) Hourly filter; tight entry zone.

Interpretation: Full confluence in LONG. Enter buys on pullbacks to H4 support (1.35529), with stops below D1 level.

Example 2: ETHUSD H4 (Current Price: 4633.71)

D1: LONG C=< 4473.51 (+160 points buffer) Strong macro uptrend intact.

H4: SHORT C=> 4658.91 (-25 points buffer) Intraday resistance capping gains.

H1: SHORT C=> 4657.11 (-23 points buffer) Short-term rejection zone.

Interpretation: Divergence (HTF LONG vs. CTF/LTF SHORT). Avoid new longs; monitor for close above H4 resistance (4658.91) as bullish confirmation.

Customization: Enable **Double_LineSpacing** for better readability on high-resolution charts.

7 Forecasting Levels

These tools project potential reversal points based on historical and live data, aiding in risk management.

- **Historical Forecasting** (`Draw_CloseForecasting = true`):
 - Displays past crossover levels as markers.
 - **Blue Up Arrows:** Bullish flip points (prior Golden Crosses).
 - **Crimson Down Arrows:** Bearish flip points (prior Death Crosses).
 - *Use Case:* Backtest reversal reliability at these levels.
- **Live Forecasting** (`Draw_LastCloseForecasting = true`):
 - Marks the current bar's projected flip level.

- **LONG Mode:** Acts as dynamic support (place stops 5–10 pips below).
- **SHORT Mode:** Acts as dynamic resistance (place stops 5–10 pips above).
- *Use Case:* Trailing stops—adjust as the level updates without repainting.

Pro Tip: Combine with **Draw_GoldenCrossArrows** for visual crossover alerts, but disable for cleaner charts during live trading.

8 Input Parameters

Parameter	Default	Description
MA_Period	5	Number of bars for moving average calculation.
MA_OpenClose_Method	LWMA	Averaging method: LWMA (weighted, volatile markets) or SMA (simple, stable trends).
Draw_MovingAverages	false	Show/hide raw Open and Close average lines for detailed analysis.
Draw_MiddleAveragesLine	true	Display the colored (Aqua/Orange) central trend line.
Draw_GoldenCrossArrows	false	Plot arrows at crossover points for signal highlights.
Draw_CloseForecasting	false	Show historical reversal markers (blue up/crimson down).
Draw_LastCloseForecasting	true	Enable live flip level for dynamic stops/trailing.
Show_Comments	true	Activate the top-left signal summary panel (highly recommended).
Show_InfoPanel	false	Optional expandable panel with extended metrics (e.g., buffer calculations).
Double_LineSpacing	false	Increase line spacing in the comments panel for clarity.

Table 1: Input Parameters for smGoldenCrossTrend Indicator

9 Best Practices

- **Timeframe Selection:**

- Swing trades (1–5 days): H4 or D1.
- Day trades: H1 (avoid M1/M30 due to noise).
- **Entry Rules:** Require multi-timeframe confluence + close near forecasting support/resistance.
- **Risk Management:** Use forecasting levels for stops (e.g., 1:2 risk-reward ratio); trail with live flip markers.
- **Chart Hygiene:** Start with minimal visuals (trend line + comments); add arrows/forecasting as needed.
- **Backtesting:** Enable all drawing options and use MT4's Strategy Tester on historical data to validate setups.
- **Common Pitfalls:** Ignore single-timeframe signals; over-reliance on arrows without confluence leads to whipsaws.

10 Summary

The **smGoldenCrossTrend** indicator streamlines trend trading by fusing:

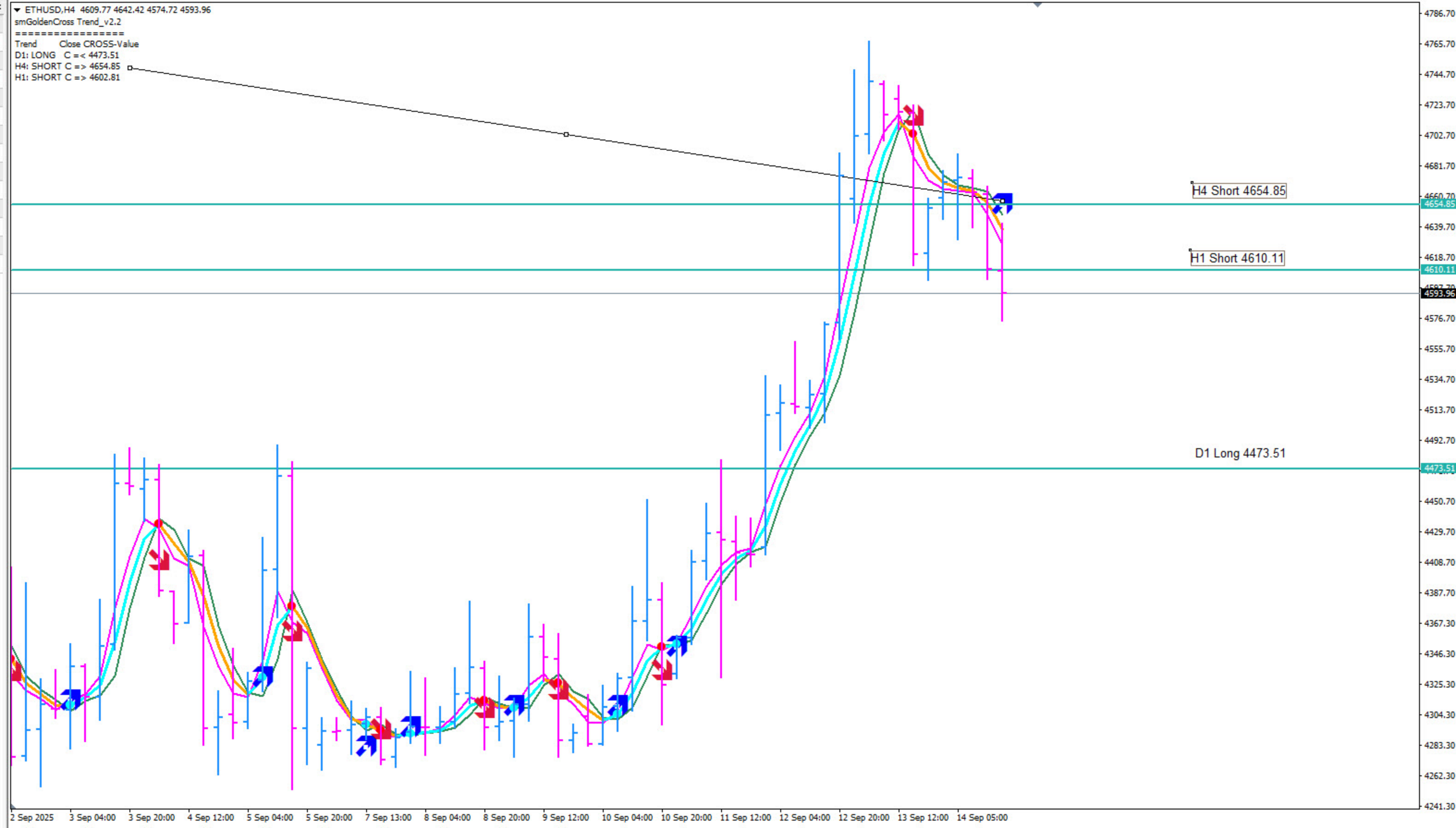
- Precise trend detection via open/close average crossovers.
- Multi-timeframe confluence for filtered signals.
- Forecasting levels as adaptive support/resistance.
- Intuitive visuals and a comments panel for efficient decision-making.

Tailored for swing and day traders, it reduces clutter while delivering structured entries, stops, and exits. For support or updates, contact the developer (George/SwingMan). Happy trading! **Green PIP\$** to all.

Data Window

ETHUSD,H4

Date	2025.09.14
Time	17:00
Open	4609.77
High	4642.42
Low	4574.72
Close	4593.96
Volume	11163
avgOpen	4648.32
avgClose	4628.03
MiddleUP	
MiddleDOWN	4638.18
Close for Crossing UP	4654.85
Close for Crossing DOWN	



Data Window

GBPUSD,H4

Date	2025.09.12
Time	20:00
Open	1.35600
High	1.35704
Low	1.35545
Close	1.35592
Volume	7239
avgOpen	1.35504
avgClose	1.35525
MiddleUP	1.35514
MiddleDOWN	
Close for Crossing UP	
Close for Crossing DOWN	1.35529

