

TradingFinder > Education > Forex Education > Can Can Pattern in RTM: Compression and Tap t...

# Can Can Pattern in RTM: Compression and Tap to Broken Zone (Caps)

Categories: Forex Education Trading Strategies Education RTM Education

Article Level: Intermediate



Writer: Nino Gogochashvili



Reviewer: Davit Kvaratskhelia



Fact checker: Rajesh Sharma



Modified: Aug 2, 2025

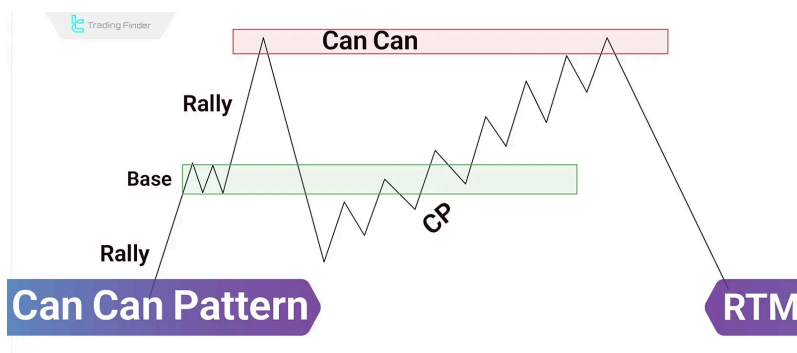
Comments: 0

Views: 56

7 Min

The Can Can pattern in the **RTM methodology** reflects a smart price behavior designed to trap breakout traders. It is not a fixed shape but rather a repeating behavior seen at liquidity absorption and market reversal points.

In this pattern, the price performs a false breakout of a key level, triggers entries from inexperienced traders, and then strongly reverses in the true direction.



Trading the Can Can Pattern typically forms after the break of RBR or DBD zone

## What is the Can Can Pattern in RTM?

The Can Can pattern is a reversal structure that typically forms after a break of a strong RBR or DBD zone—levels that are structurally powerful and expected to cause reactions.

After breaking such a zone, the price enters a compression phase, forming multiple weak levels in succession. Upon reaching the broken zone (Caps) again, the lack of liquidity causes a sharp reversal

accompanied by an internal structure break.

## Create AI Videos in Seconds

HeyGen - AI Video

Sig

### Structure of the Can Can Pattern in RTM

The purpose of this pattern is to identify the zone where market manipulation ends and real price movement begins. Four main stages define the Can Can pattern:

1. Break of a key level, such as RBR or DBD;
2. Move beyond the broken level to collect stop-losses (false breakout);
3. Quick return to the previous structure (no breakout confirmation);
4. The internal structure breaks in the opposite direction.

This pattern indicates liquidity manipulation and the onset of a true market reversal.

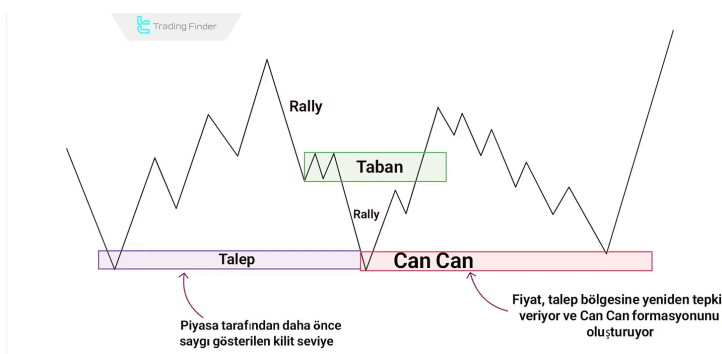
### Identifying the Can Can Pattern in RTM Style

When the following signs appear on the chart, the Can Can pattern can be considered valid:

#### Formation Area

The pattern should occur at a level where the price has reacted multiple times or where many retail orders are stacked.

These are often **supply and demand zones** or areas loaded with **retail stop-losses**, indicating liquidity waiting to be grabbed.



Can Can formation in a demand zone previously respected by price

## Strong and Clear Breakout Candles

The candle that breaks the level is usually large, strong, and high-volume, creating the illusion of trend continuation. Retail traders enter in the direction of the breakout, which is a trap for liquidity gathering.

## Quick Return to Structure

If the price quickly and strongly returns inside the previous range after the breakout, it indicates the move was not genuine. This swift return suggests that market makers are redirecting the price.

## Advanced Tips for Trading the Can Can Pattern in RTM

To boost accuracy when trading this setup, consider these high-level tips:

### Strong FL (Flag Limit)

If the Can Can pattern forms on a well-defined and reaction-rich FL, it carries more weight these zones are decision points for smart money.

### Timeframe Matters

The pattern is more reliable on higher timeframes like H1 or H4, as movements there are cleaner and less affected by noise.

### Liquidation Clusters

If the pattern forms near areas with many stop-losses stacked behind a key level, it's a sign that smart money is hunting liquidity, and a reversal is likely.

#### You May Like :



Forex Economic Calendar Tool [150+ Countries] -...



Interest Rates of All Countires [America, Europe, Asia, Africa,...



Crypto Fear & Greed Index Tool [Market Sentiment Analysis]

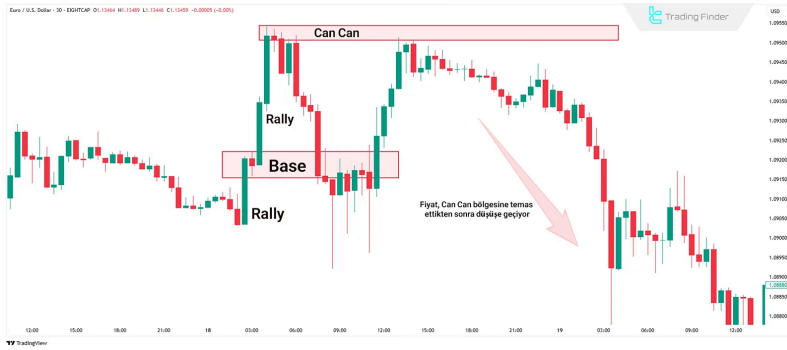


Stock Market Hours Tool [120+ Markets]

## Can Can Pattern Trade Example in RTM Style

On a 30-minute EUR/USD chart, the price forms an RBR structure and taps into a supply zone. After the reaction, the price returns to the base, breaks through it, and collects liquidity below.

Then, the price moves back up to the broken zone (Caps), fails to find support, and aggressively reverses. This sharp move starts at the Can Can zone, and a bearish trend resumes.



Identifying and trading the Can Can pattern in RTM style

### Common Mistakes in Using the Can Can Pattern (RTM)

Despite its apparent simplicity, this pattern requires precise execution. Common trader mistakes include:

- ⚡ **Misidentifying the structure:** Not every reversal is a Can Can. It must include a strong break, compression, and internal structure break;
- ⚡ **Entering too early:** Jumping in without waiting for the internal structure break increases risk;
- ⚡ **Ignoring market context:** Focusing only on the Can Can shape without assessing the overall market structure leads to poor entries.

### Conclusion

The **Can Can Pattern** in RTM is used to spot real market reversals after false breakouts and liquidity grabs. It becomes more reliable when there's a strong level break (like RBR/DBD), a quick price return, pre-reversal compression, and an internal structure break.

Key factors to consider include the formation zone, breakout candle, timeframe, flip level quality, and stop-loss clusters. The pattern works best when it aligns with the higher timeframe trend and there's liquidity behind the broken level.



Can Can Pattern in RTM PDF

Click to download Can Can Pattern in RTM PDF

Download PDF

### FAQs

- What is the Can Can pattern? ∨
- A reversal pattern in RTM forms after a false breakout of a strong level. It identifies the real market direction through structure break. ∨
- When is Can Can valid? ∨
- When all four elements are present: false breakout, quick return, compression, and internal structure break ∨
- Is every false breakout a Can Can? ∨

No, A false breakout alone is not enough it must be followed by an internal break and reversal.

Best timeframe to spot Can Can? ▼

Higher timeframes like H1 or H4 are more effective.

What is the difference between Can Can and a normal breakout? ▼

Normal breakouts continue directionally. Can Can reverse sharply after a quick return.



5 From 5.0

(1)

Rate this post



Table Of Content ✕

What is the Can Can Pattern in RTM?

Structure of the Can Can Pattern in RTM

Identifying the Can Can Pattern in RTM Style ▼

Advanced Tips for Trading the Can Can Pattern in RTM ▼

Can Can Pattern Trade Example in RTM Style

Common Mistakes in Using the Can Can Pattern (RTM)

Conclusion

Top Posts



What is an ICT Order Block and How to Trade It?

Ram Nisha | Dec 23, 2024

9,518 Views



Turtle Soup Strategy from ICT Style

Arjun Mandal | Dec 23, 2024

8,743 Views

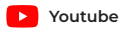
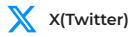


Break of Structure (BOS) on ICT

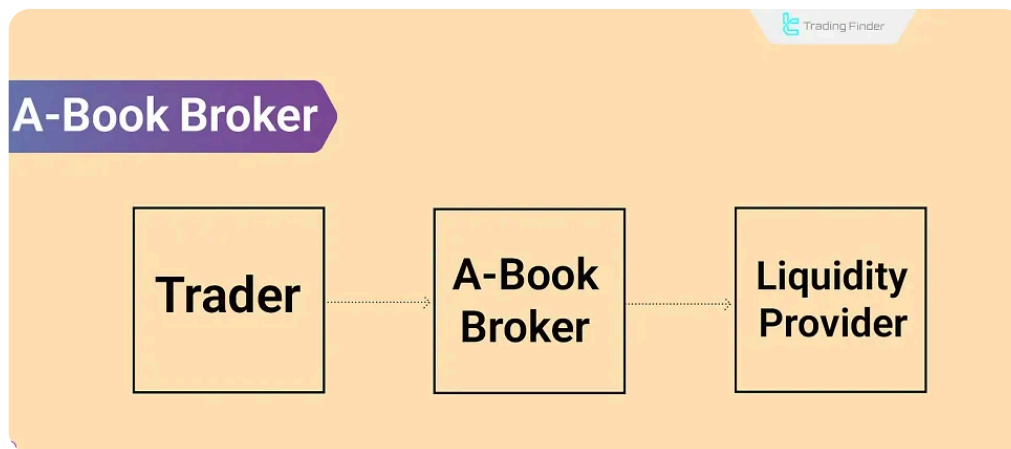
Eda Kaya | Dec 22, 2024

8,698 Views

### Our Social Media



### Latest Articles



What is an A-Book Broker? Risk Transfer to Liquidity Provider (LP) and Hedging

Forex Education

Nino Gogochashvili | Aug 6, 2025

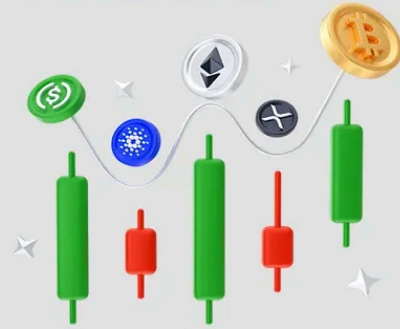


Martingale Strategy in Financial Markets; Classic, Pyramid, and Grand Martingale

Forex Education

Davit Kvaratskhelia | Aug 4, 2025

# What is Margin Trading?



Margin Trading: Calculation Method and Common Terminology

Forex Education

Ram Nisha | Aug 3, 2025

## Works Where You Work

Fix misplaced commas, misused words, grammar goofs, and more now!

Grammarly

Down



Complete training in financial markets such as "Forex," "Stock Market," and "Cryptocurrencies" only becomes comprehensive with tested trading tools and strategies. "Trading Finder," with its experience, aids traders and investors in gaining a correct understanding and deep learning. The training programs are designed based on tools for traders of all levels, from "beginner to advanced."



English (EN) ▾

[About Us](#)

[Our Team](#)

[Advertisement](#)

[Contact Us](#)

[Jobs](#)

[Affiliates](#)

[Forex Methodology](#)

[Report a Bug](#)

[Our Scores](#)

Indicators & Oscillators

---

Products

---

Financial Market Education

---

Trading Tools

---

Trading Tools

---

**Risk Disclosure:**

Participating in financial markets involves high risk, which can result in the loss of part or all of your investment. There are no

[Show More](#) 

**Disclaimer:**

[TradingFinder.com] assumes no responsibility for any potential losses or damages. All decisions are the sole responsibility of

[Show More](#) 

**Disclosure of revenues and advertisements:**

The "TradingFinder" platform offers various services, some of which, like introductions, are free, while others, such as our

[Show More](#) 

[Privacy Policy](#)

[Risk Warning](#)

[Cookies Policy](#)

[Copyright and Idea Submissions](#)

[Terms and Conditions Agreement](#)

© 2025 TradingFinder, Inc. All rights reserved.

