

فكرتك اسم نطاق

نلاين مع امتداد اسم نطاق فريد من نوعه



GoDaddy™

TradingFinder > Education > Forex Education > What is Ichimoku? Tenkan-sen, Kijun-sen, Chiko...

What is Ichimoku? Tenkan-sen, Kijun-sen, Chikou Span, Senkou Span A & B

Categories: Forex Education Technical analysis Education Indicators Education

Article Level: **Advanced** 📶



Writer:
Rajesh Sharma



Reviewer:
Davit Kvaratskhelia



Fact checker:
Nino Gogochashvili



Modified: Jun 29, 2025

🗨️ Comments: 0

👁️ Views: 157

🕒 16 Min

Ichimoku, as both an **indicator** and a complete **trading system** in **technical analysis**, simultaneously provides information about the **trend, trend strength, support and resistance**, and **potential entry and exit points**.

The indicator's **multi-layered structure** and **unique formulation** allow analysts to quickly assess the overall **market condition**.



Your First Step to Fitness

Simple workouts to start. No hassle, just effective exercises!

Ur
w MadMuscles

ls

to perform better in **trending markets**, such as the **Forex market** and **cryptocurrencies**, c
less volatile environments.



Learn how to use Ichimoku in technical analysis

What is Ichimoku?

Ichimoku is a technical analysis system that, by combining five key components [**Tenkan-sen**, **Kijun-sen**, **Chikou Span**, **Senkou Span A**, and **Senkou Span B**] offers a comprehensive view of market conditions. It simultaneously identifies **trend direction**, **strength**, **dynamic support and resistance levels**, and **entry and exit points**.

What makes Ichimoku unique is its use of **time-shifted lines** and the **Kumo cloud structure**, which allows traders to **evaluate price movements** effectively.

History of Ichimoku

Ichimoku was developed by Japanese journalist **Goichi Hosoda** in the 1930s and released to the public in the 1960s after more than **30 years of testing and refinement**. His goal was to build a tool, capable of quickly showing **market equilibrium** and **key decision points**.

Its full name, **Ichimoku Kinko Hyo**, means "**equilibrium chart at a glance**". Initially used in the Japanese stock market, it gradually gained popularity in global markets, particularly in the **Forex market**.

Advantages and Disadvantages of Ichimoku

The table below presents the advantages and disadvantages of the Ichimoku indicator:

Advantages	Disadvantages
Comprehensive and all-in-one analysis	Signal delay
Applicable across all timeframes	Weak performance in ranging markets
Detects market shifts before they occur	Lack of clear signals in choppy/sideways markets
Provides buy and sell signals	–

Components of Ichimoku

Ichimoku is made up of five main components, each representing a portion of information about the **trend**, **market strength**, and **key price levels**:

- ⚡ **Tenkan-sen (Conversion Line)**
- ⚡ **Kijun-sen (Base Line)**
- ⚡ **Chikou Span (Lagging Span)**
- ⚡ **Senkou Span A (Leading Span A)**
- ⚡ **Senkou Span B (Leading Span B)**

Tenkan-sen

Tenkan-sen is one of the key components of the Ichimoku indicator, calculated as the average of the **highest high** and **lowest low** over the **past nine candles**. This line reflects the **short-term trend direction and slope**, and due to its high sensitivity to price movements, it usually reacts faster than the other lines.

Tenkan-sen, along with **Kijun-sen**, is used to generate **cross signals**. A change in its direction can indicate the **start** or **weakening** of a price movement. In non-trending conditions, this line often becomes **horizontal** and acts as a **short-term support or resistance** level.



Identifying the Tenkan-sen line in technical analysis

Kijun-sen

Kijun-sen is another major line in Ichimoku, calculated as the average of the **highest high** and **lowest low** over the **past 26 candles**. This line represents the **medium-term trend** and the **price equilibrium level**.

Compared to **Tenkan-sen**, **Kijun-sen** reacts more slowly and is often used as a **reference line** to decide whether a trend is **continuing** or **reversing**.



Your First Step to Fitness

Simple workouts to start. No hassle, just effective exercises!

W
be MadMuscles

dynamic support or resistance.

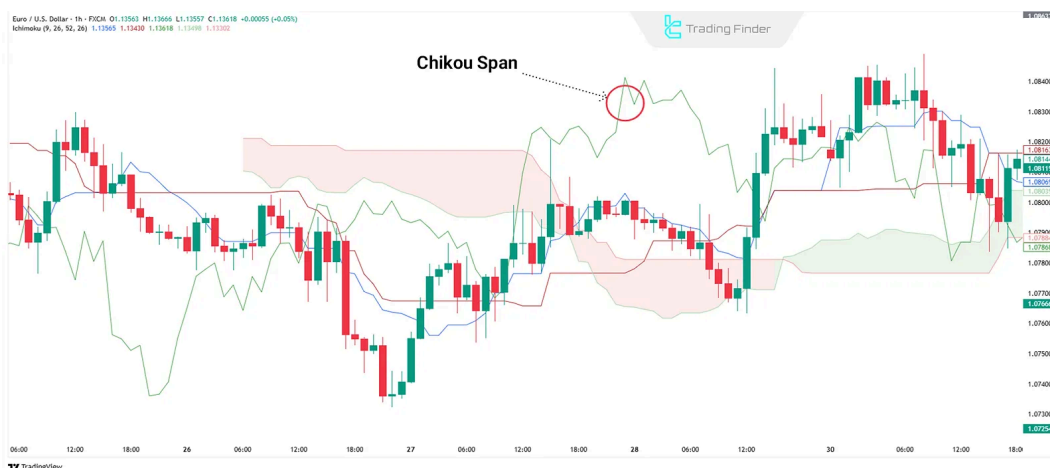


Highlighting the Kijun-sen line in technical analysis

Chikou Span

Chikou Span is a line that plots the **closing price of the current candle** shifted **26 periods backward** on the chart. This line compares today's price with the past to help traders better identify **trend strength and direction**.

When **Chikou Span** is above the price, it signals a **stronger bullish trend**, and when below, it indicates a **bearish trend**. If **Chikou Span** intersects with past candles, it may suggest **trend weakness** or a **possible reversal**. While it doesn't provide standalone signals, it plays an important **confirmatory role** when used with other Ichimoku components.



Identifying and using Chikou Span in Ichimoku strategy

Senkou Span A (Leading Span A)

Senkou Span A is one of the two lines that form the **Kumo cloud** in the Ichimoku indicator. It is calculated as the **average of Tenkan-sen and Kijun-sen**, and the result is **shifted 26 periods ahead** into the future. Together with **Senkou Span B**, it forms the structure of the Ichimoku cloud.

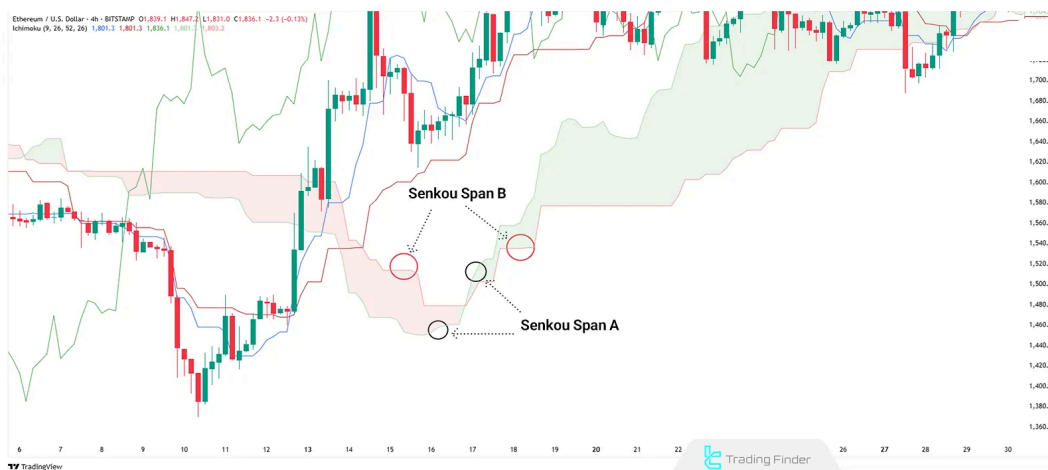
In an **uptrend**, Senkou Span A typically forms the **upper boundary** of the cloud, while in a **downtrend**, it forms the **lower boundary**. This line is crucial for **forecasting market direction** and identifying **dynamic support and resistance levels**. The **slope and position** of this line relative to Senkou Span B indicate the **strength or weakness of the existing trend**.

Senkou Span B (Leading Span B)

Senkou Span B, the second line forming the **Kumo cloud**, is calculated as the **average of the highest high and lowest low over the past 52 candles**. Like Span A, it is also **shifted 26 periods forward** to form the cloud structure along with Senkou Span A.

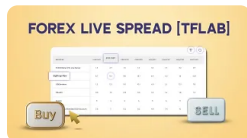
Senkou Span B is **slower and more stable** than Span A and often serves as a **strong support or resistance level** in strong trends. When Senkou Span B is **flat and horizontal**, it signals a **ranging market** and represents

a **significant price level** that tends to influence price reactions. The **space between Span A and B** defines the **cloud area**, which is one of the most important analytical components of Ichimoku.

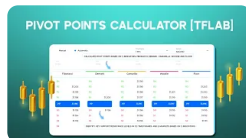


Identifying Senkou Span A and Senkou Span B in technical analysis

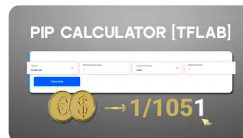
You May Like :



Forex Live Spread Tool
[Compare Spreads of
70 Pairs Across 100+...



Forex Pivot Points
Calculator Tool; 150+
Instruments Across 6...



Forex Pip Calculator
Tool 2025 [Calculate
+70 Assets by Enterin...



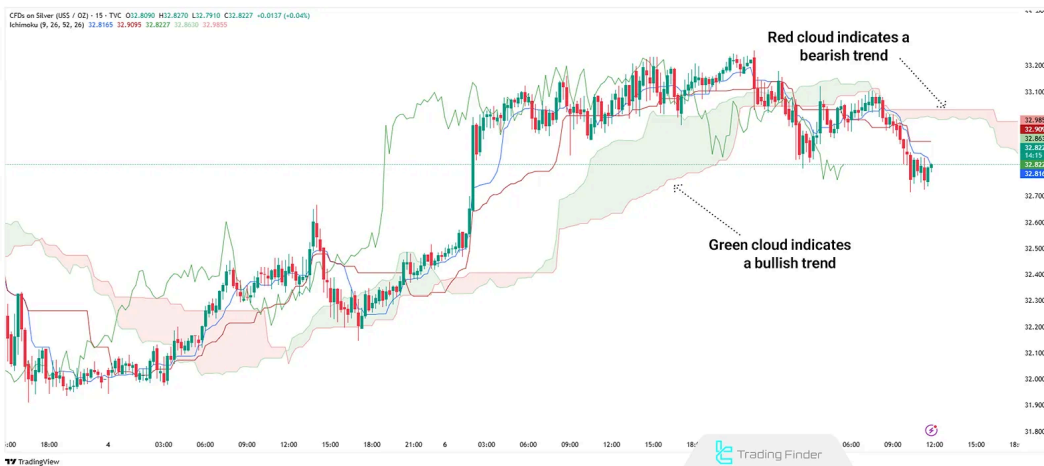
Forex Sessions &
Market Hours | Forex
Time in GMT, UTC, ET,...

What is the Kumo Cloud in Ichimoku?

The **Kumo cloud** is the area between **Senkou Span A and B**; both shifted 26 candles forward. This zone plays a key role in identifying the **market structure and trend status**.

When Senkou Span A is above Span B, the cloud is usually **green or blue**, indicating a **bullish trend**.

When Span B is above Span A, the cloud is **red or orange**, indicating a **bearish trend**.



Recognizing bullish trends with green Kumo cloud and bearish trends with red Kumo cloud in Ichimoku strategy

Price Behavior Relative to the Kumo Cloud

Price interacts with the Kumo cloud in several ways:

- ⚡ **Above the cloud:** Indicates a **bullish trend** with the cloud acting as a **dynamic support**;
- ⚡ **Below the cloud:** Indicates a **bearish trend**, with the cloud acting as a **dynamic resistance**;
- ⚡ **Inside the cloud:** Suggests a **neutral or ranging market**.

Cloud Thickness and Support/Resistance Strength

A **thicker cloud** usually suggests greater **trend stability** and **stronger support/resistance**. In contrast, a **thin cloud** may indicate a **higher chance of price breakout and trend reversal**. The ease or difficulty with which the price passes through the cloud often depends on its **thickness**.

Types of Ichimoku Strategies in Technical Analysis

To utilize Ichimoku in technical analysis and trading, various methods can be applied. The most **common approaches for using Ichimoku signals** include:

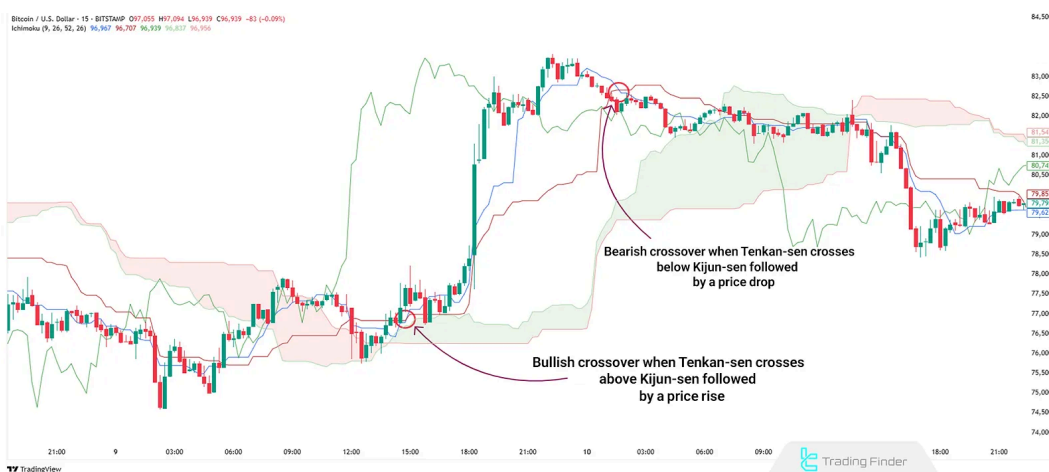
- ⚡ Crossover Signals
- ⚡ Kumo Breakout Signals
- ⚡ Chikou Span Signals

Crossover Signals

Crossover signals in Ichimoku refer to rapid market trend shifts that usually occur when different Ichimoku lines intersect. These signals can be used to identify suitable **entry or exit points** in the market.

Tenkan-sen and Kijun-sen Cross

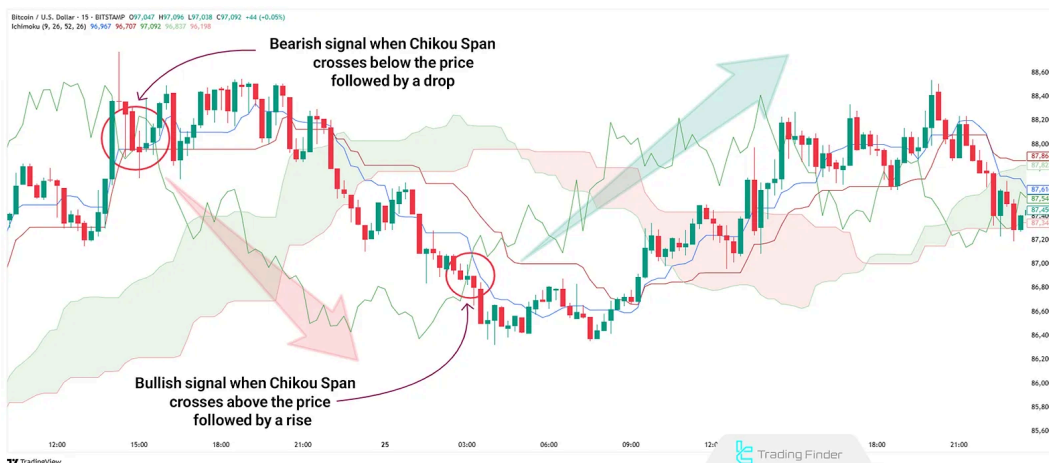
When **Tenkan-sen** crosses **Kijun-sen** from below, it indicates a shift from a bearish to a bullish trend and is considered a **buy signal**. Conversely, when Tenkan-sen crosses Kijun-sen from above, it indicates a potential trend reversal from bullish to bearish, acting as a **sell signal**.



Buy and sell signals using Tenkan-sen and Kijun-sen crossover in Ichimoku technical analysis

Chikou Span and Price Cross

Ichimoku Chikou Span signals occur when the Chikou line crosses the price. If **Chikou Span** crosses the price **from below to above**, it confirms a **bullish trend** and suggests a **buying opportunity**. If it crosses **from above to below**, it signals the start of a **bearish trend** and acts as a **sell signal**.



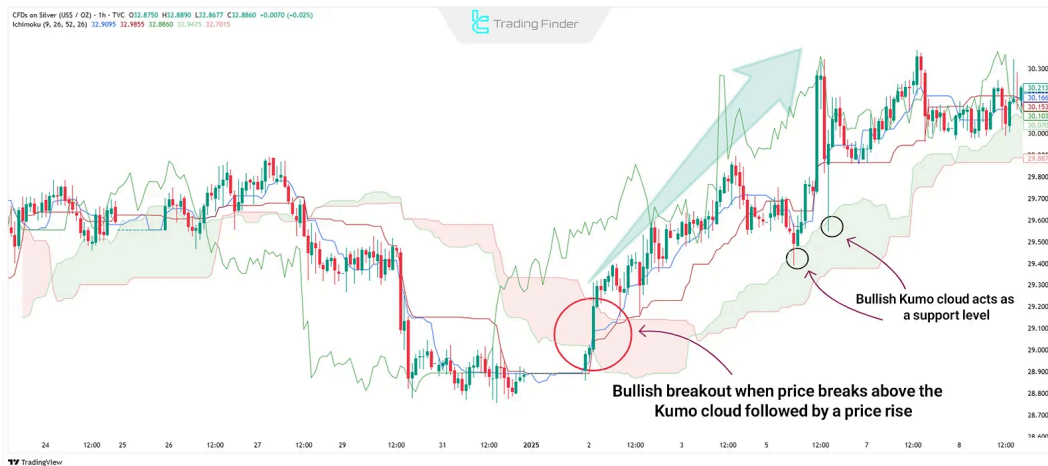
Buy and sell signals using Chikou Span and price crossover in Ichimoku technical analysis

Kumo Breakout Signals

The Kumo cloud, formed by **Senkou Span A** and **Senkou Span B**, represents dynamic support and resistance levels. A breakout through these lines can indicate **new trend formations**.

Bullish Kumo Breakout

This signal occurs when the price **breaks above** the cloud. It indicates a trend reversal from bearish to bullish and is considered a **buy signal**. When the price stays above the cloud, it shows the **start and continuation of an uptrend**. In this case, the cloud acts as **strong support**, pushing the price higher.



Bullish trend starts with price-breaking bearish Kumo cloud in Ichimoku strategy

Bearish Kumo Breakout

This occurs when the price **breaks below** the cloud, indicating a shift from a **bullish** to a **bearish** trend, and is treated as a **sell signal**. When the price moves below the cloud, it confirms **weakness in the uptrend** and the beginning of a **downtrend**. The cloud now acts as **resistance**.



Bearish trend starts with price-breaking bearish Kumo cloud in Ichimoku strategy

Chikou Span Signals

The Chikou Span in Ichimoku is used to **confirm** the trend and **identify potential trend reversals**.

Chikou Span Trend Confirmation

When **Chikou Span** is **above the price**, it confirms a **bullish trend** and suggests upward momentum. If it is **below the price**, it confirms a **bearish trend** and signals downward movement.



Chikou Span's above price confirms an uptrend; below price indicates a downtrend in Ichimoku strategy

Chikou Span Trend Reversal

If **Chikou Span** crosses the price **from below to above**, it indicates a potential reversal **from bearish to bullish**. If it crosses **from above to below**, it suggests a reversal **from bullish to bearish**.

Bermuda in Ichimoku

When a **small cloud** forms on the chart that has not yet been touched by any candles, this phenomenon is known as "**Bermuda**." This area tends to **attract price** and can be considered a significant **price target**. It is applicable and analyzable in all timeframes.



Price returns to Bermuda after trend turns bearish in Ichimoku strategy

Advanced Tips in Ichimoku

Applying the following tips can increase the likelihood of success when trading with the Ichimoku indicator:

Multi-Timeframe Analysis

Ichimoku allows traders to analyze the market across multiple timeframes. Identify major trends on **higher timeframes**, then use more precise signals on **lower timeframes** for trade entries.

Ichimoku + Price Action Overlap

One advanced technique is combining Ichimoku with **price action**. Price action patterns can **confirm** or **reject** Ichimoku signals. For instance, if Ichimoku gives a buy signal and it aligns with a **reversal candlestick** or **head and shoulders pattern**, the signal gains more **reliability**.



Ichimoku strategy enhanced with price action for signal confirmation

You May Like :



Candlestick Patterns
in Support and
Resistance: Reversal...



Oversold and
Overbought Conditions;
Using Tools Like RSI...



CHOCH in ICT; Best
Timeframe to Identify
CHOCH in Trading



ICT Trading Style
Abbreviations and
Terminologies [FVGs,...

Conclusion

Ichimoku is a complete technical analysis system that combines five core components such as **Tenkan-sen**, **Kijun-sen**, **Chikou Span**, **Senkou Span A**, and **Senkou Span B**, to give traders a detailed view of market conditions and entry/exit opportunities.

It simultaneously analyzes the overall market using moving averages and the **Kumo cloud structure**.

Ichimoku performs especially well in **trending markets** like the **Forex market** and **cryptocurrencies**, as its signals are more reliable in strong trends. Through **multi-layered analysis**, it simulates market behavior and helps forecast **price movements**.

FAQs

What is Ichimoku? ▼

Ichimoku is a technical analysis system that includes five core elements to simultaneously provide insights on trends, trend strength, support and resistance, and entry/exit points.
Which market does the Ichimoku indicator work best in? ▼

Ichimoku, with its multi-layered analysis and cloud structure, is more accurate in **trending markets** like the **Forex market** and **cryptocurrencies**.
What are the main components of Ichimoku? ▼

Tenkan-sen, Kijun-sen, Chikou Span, Senkou Span A, and Senkou Span B.

How are Ichimoku crossover signals used? ▼

Crossover signals occur when Tenkan-sen and Kijun-sen intersect, indicating potential trend changes.



5 From 5.0

(1)

Rate this post



Table Of Content ✕

What is Ichimoku?

History of Ichimoku

Advantages and Disadvantages of Ichimoku

Components of Ichimoku ▼

What is the Kumo Cloud in Ichimoku? ▼

Types of Ichimoku Strategies in Technical Analysis ▼

Chikou Span and Price Cross ▼

Advanced Tips in Ichimoku ▼

Conclusion

Top Posts



Turtle Soup Strategy from ICT Style

Arjun Mandal | Dec 23, 2024

8,092 Views



What is an ICT Order Block and How to Trade It?

Ram Nisha | Dec 23, 2024

8,624 Views

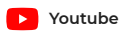
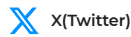


Break of Structure (BOS) on ICT

Eda Kaya | Dec 22, 2024

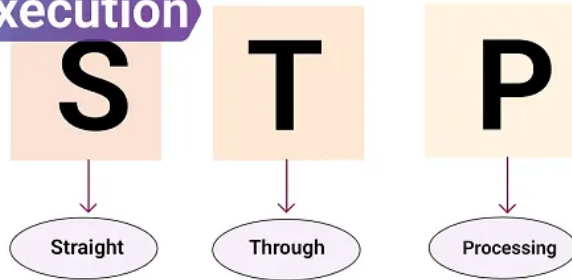
8,059 Views

Our Social Media



Latest Articles

STP Execution



STP Execution Model: Routing Trade Orders Directly to Liquidity Providers

Forex Education

Eda Kaya | Jul 11, 2025

How do Forex brokers work?



How do Forex brokers work? STP vs. ECN + A-Book, B-Book, and C-Book Brokers

Interesting Financial Articles

Sinan Aydin | Jul 10, 2025



Complete training in financial markets such as "Forex," "Stock Market," and "Cryptocurrencies" only becomes comprehensive with tested trading tools and strategies. "Trading Finder," with its experience, aids traders and investors in gaining a correct understanding and deep learning. The training programs are designed based on tools for traders of all levels, from "beginner to advanced."

 English (EN) ▾

[About Us](#)

[Our Team](#)

[Advertisement](#)

[Indicators & Oscillators](#)

[Trading Tools](#)

[Contact Us](#)

[Jobs](#)

[Affiliates](#)

[Products](#)

[Trading Tools](#)

[Forex Methodology](#)

[Report a Bug](#)

[Our Scores](#)

[Financial Market Education](#)

Risk Disclosure:

Participating in financial markets involves high risk, which can result in the loss of part or all of your investment. There are no

[Show More](#) ▾

Disclaimer:

[TradingFinder.com] assumes no responsibility for any potential losses or damages. All decisions are the sole responsibility of

[Show More](#) ▾

Disclosure of revenues and advertisements:

The "TradingFinder" platform offers various services, some of which, like introductions, are free, while others, such as our

[Show More](#) ▾

[Privacy Policy](#)

[Risk Warning](#)

[Cookies Policy](#)

[Copyright and Idea Submissions](#)

[Terms and Conditions Agreement](#)

© 2025 TradingFinder, Inc. All rights reserved.