

Best in quality

We take trade ins and provide cleaning supplies, modules and spare parts



TradingFinder > Education > Forex Education > What Is RTM Price Action? Using RBR, DBR, DBD...

What Is RTM Price Action? Using RBR, DBR, DBD, and RBD Structures in RTM Style

Categories: Forex Education Financial Glossary Trading Strategies Education RTM Education

Article Level: Advanced



Writer: Sinan Aydin



Reviewer: Davit Kvaratskhelia



Fact checker: Nino Gogochashvili



Modified: Jun 30, 2025

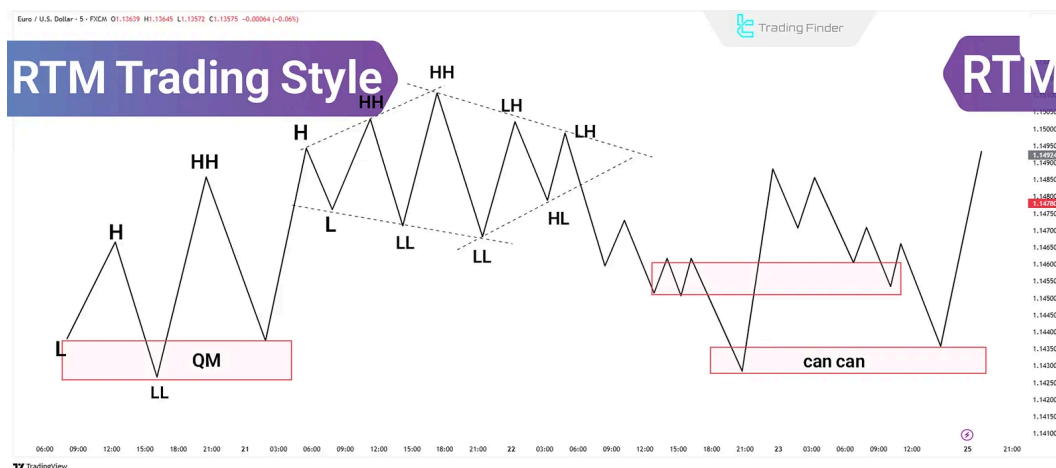
Comments: 0

Views: 316

32 Min

RTM Style, short for "**Read The Market**" is an analytical method in financial markets that, instead of relying on indicators, examines price behavior based on market structure, liquidity, and order flow. Focus of this style in **technical analysis** is on identifying points where large market players **enter** or **exit**.

In **RTM Style**, the trader doesn't predict price movement but analyzes it as the result of **supply**, **demand**, **liquidity absorption**, or **liquidity removal**. Tools such as **price nodes**, **compressions**, **structure breaks**, and **candle types** help improve the understanding of this process.



RTM Style Training for Trading Strategies



What Is RTM Style?

In **RTM Price Action**, the focus is on identifying specific zones where large investors have made heavy entries or exits. These zones, referred to as **price nodes**, only gain significance when analyzed alongside **market structure, candle types, and liquidity**.

This style uses various tools to demonstrate how large volumes of capital move without leaving obvious traces. The most important tools in **RTM Style** include:

- ⚡ **Price structures** such as RBR, DBD, and others
- ⚡ **Supply and Demand Zones**
- ⚡ Identification of **Momentum and Base Candles**
- ⚡ **Liquidity behaviors** such as stop hunts and compressions (**CP**)
- ⚡ The role of **price nodes** combined with the concept of **Nested Zones**

Ultimately, the goal of **RTM** is to identify entry points with low stop-losses based on actual market behavior.

Table of Advantages and Disadvantages of RTM Style

Before learning and applying **RTM Style**, price behavior, and order flow analysis, one must understand its strengths and weaknesses:

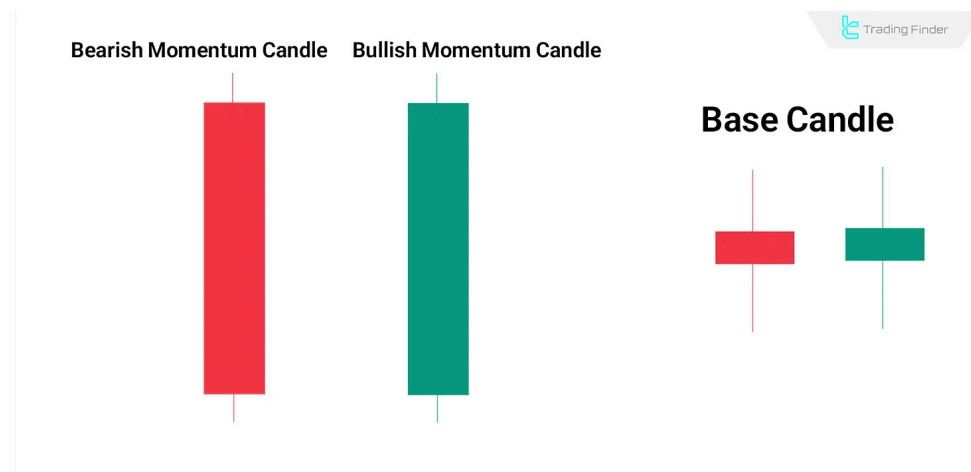
Advantages	Disadvantages
Accurate identification of large market players' behavior	Requires time and experience to master the concepts
Focus on market logic instead of external tools like indicators	Highly complex for beginner traders
Offers high risk-to-reward ratio in trades	Low win rate if analysis is executed poorly
Applicable across all timeframes and markets (Forex, Crypto, etc.)	High chance of counter-trend trades if higher timeframes are ignored
Detailed analysis of decision-making zones and liquidity	High potential for misinterpretation of structures without proper training
Ability to filter weak zones using key factors	Lack of comprehensive educational standards and scattered learning resources

Candles in RTM Style

In **RTM Style**, candle analysis is based on their **dominance** over one another rather than their names or visual patterns. For example, if a **bullish green** candle fully **engulfs** the previous bearish candle, it

indicates the **buyers' dominance** in the market. Candles used in RTM include:

- ⚡ **Base Candles**
- ⚡ **Momentum Candles**



Base and Momentum Candles in RTM Style Training

RTM Base Candle

A **Base Candle** reflects a moment of relative balance between buyers and sellers. This candle usually forms **before or after** sharp price movements.

Key characteristics of a Base Candle:

- ⚡ **Smaller body** compared to the total wick length
- ⚡ **Bullish or bearish** color does **not** affect zone analysis
- ⚡ Indicates **price pause**, compression, or preparation for the next move
- ⚡ Forms the basis for drawing **supply and demand zones** in **RTM structures**

RTM Momentum Candle

A candle that signals **clear dominance** of one market side (buyers or sellers).

Key characteristics of a Momentum Candle:

- ⚡ **Body larger** than the total wick length
- ⚡ **Short or no wicks** (no wick is ideal)
- ⚡ Clear directional bias; e.g., bullish candle opens low and closes high with strong buying pressure
- ⚡ **Fast and decisive** price movement

Differences Between Momentum Candle and Base Candle in

RTM Style

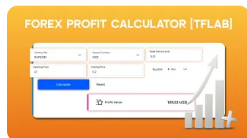
Recognizing the difference between **Momentum** and **Base Candles** is essential in using **RTM Style**.

This distinction forms the foundation for **identifying core market structures**.

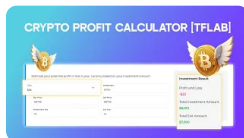
Characteristic	Momentum Candle	Base Candle

Body	Large	Small
Wicks	Short or none	Typically long
Price Behavior	Strength and dominance	Pause and balance
Usage	Confirms trend direction	Basis for zone drawing

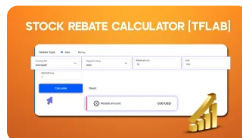
You May Like :



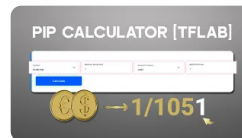
Forex Profit/Loss Pip
Calculator Tool (with
Formula) - [20+...



Crypto Profit
Calculator Tool –
TradingFinder



Stock Rebate
Calculator Tool -
Calculate Cashback...



Forex Pip Calculator
Tool 2025 [Calculate
+70 Assets by Enterin...

Core Concepts of RTM Style

Three core concepts form the analytical foundation of **RTM Style**, and understanding them enables precise market analysis and high-probability entries:

- ⚡ **Market Structure**
- ⚡ **Supply & Demand Zones**
- ⚡ **Liquidity**

Market Structure in RTM Price Action

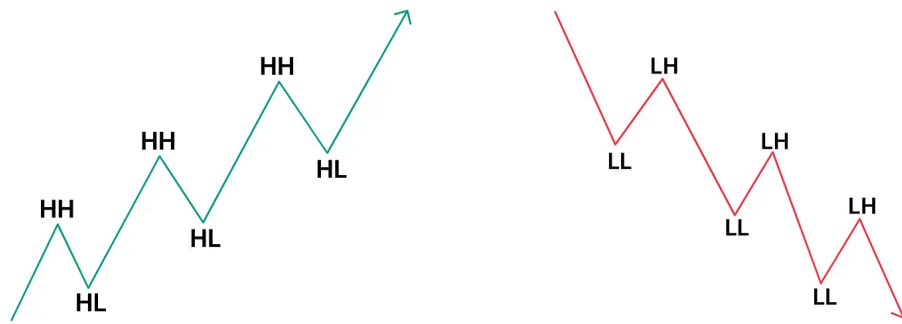
Market structure reveals the price's directional movement, helping identify the dominant trend and reversal points. **Core elements include:**

Higher High (HH) and Higher Low (HL)

If new highs and lows are formed above the previous levels, the trend is **bullish**, indicating **buyers** are in control and pushing prices upward.

Lower Low (LL) and Lower High (LH)

If each new low and high is lower than the last, the market is in a **bearish trend**, signaling **stronger sellers** and a desire to push prices downward.



Higher and lower highs/lows in RTM Style

Structure Break in RTM Method

When a price breaks an important high or low in the direction of the current trend, it's called a **Structure Break**. This confirms trend continuation and is a key sign in **RTM analysis**.

Trend Reversal in RTM Style

A break of a significant high or low **for the first time** signals the **end** of the **current trend** and the potential of **beginning a new trend**. For example, if the price breaks a key **low** during an uptrend, it could mark the **start of a downtrend**.

Supply & Demand Zones in RTM Price Action

These zones are areas where the **imbalance** between buyers and sellers causes **price reversals**. Key components:

Demand Zone in RTM

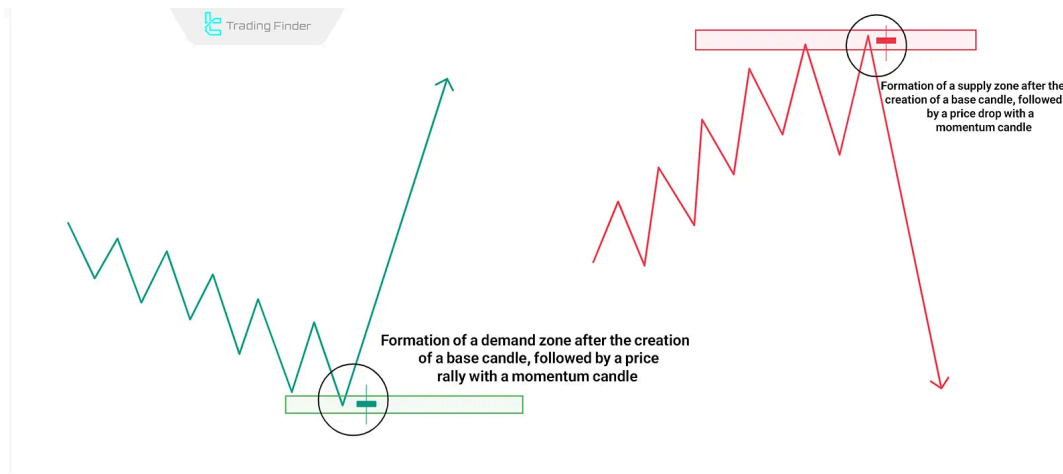
A region on the chart where price previously **rallied strongly**. This indicates strong **buy orders** and may again fuel price growth.

Supply Zone in RTM

A region from which prices previously **dropped sharply**. Signifies **seller dominance** and may again push prices lower.

How to Precisely Draw Zones in RTM Style?

Supply and demand zones are typically drawn by combining **Base Candles** and **Momentum Candles**. The range between the last **neutral candle (base)** and the **first strong impulse candle** is defined as the zone. The **faster and stronger** the movement from the zone, the **more valid** it is.



Price rally from demand zone and drop from supply zone in RTM Style Training

Hidden Orders

RTM Style assumes some buy or sell orders remain in these zones, and prices may **react again** upon returning to them.

Liquidity in RTM Style

Liquidity is not just a side factor but a **target** for price movement. In **RTM**, liquidity is seen as the **fuel** that **powers price**. The analyst must identify where the market is heading for liquidity and where it's most likely to be absorbed.

Stop-Loss Clusters in RTM Price Action

Behind major highs and lows, numerous **stop losses** are typically placed. **Market makers** target these zones because triggering stops injects **liquidity** into the market.

Stop Hunt in RTM

Sometimes, price swiftly moves into certain zones to trigger stop-losses. This movement is typically **short-term and temporary**, but its **primary goal** is to absorb **liquidity** for the continuation of the main trend.

The Four Market Structures in RTM Style

The **four core structures** in **RTM Price Action** represent the most fundamental price movements. These patterns help identify **decision-making zones** and **potential reversal or continuation points**. Each structure consists of two **upward** and two **downward** movements. Key **RTM Style** structures include:

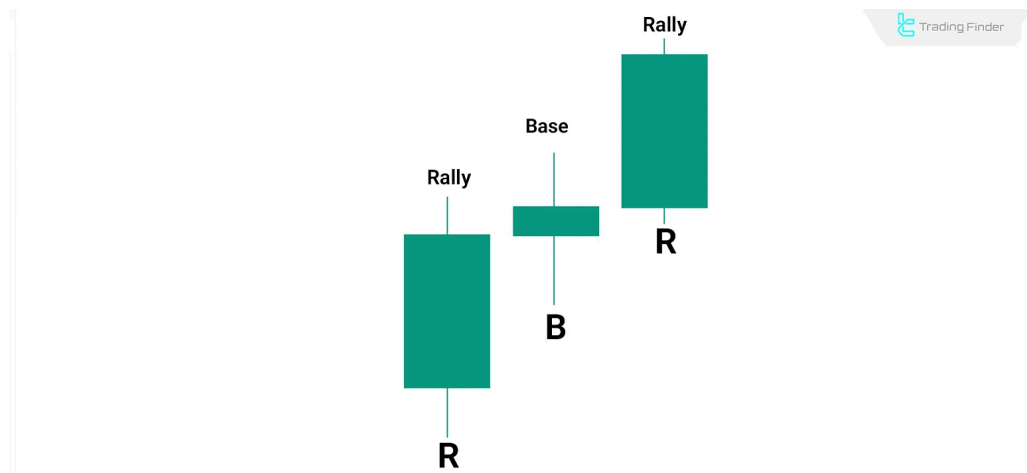
- ⚡ **Rally–Base–Rally (RBR)**
- ⚡ **Drop–Base–Rally (DBR)**
- ⚡ **Drop–Base–Drop (DBD)**
- ⚡ **Rally–Base–Drop (RBD)**

Rally–Base–Rally (RBR) in RTM Method

Price rallies upward enters a **base phase** (balance), and then continues its bullish movement with greater momentum. This indicates **active buyers** with strong momentum.

Use Cases of RBR:

- ⚡ Entry after a pullback to the **base zone** for long positions
- ⚡ Ideal for **sustained bullish trends**



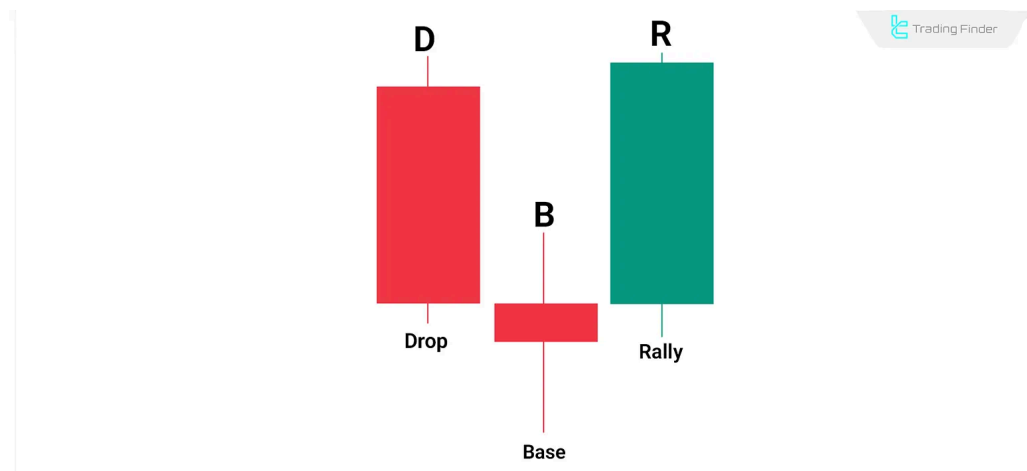
Active buyers creating a Rally–Base–Rally (RBR) structure in RTM Style Training

Drop–Base–Rally (DBR) in RTM Style

Price drops (Drop), stabilizes in a **base**, then **reverses upward** (Rally). This reflects **buy order absorption** and the **end of selling pressure**.

Use Cases of DBR:

- ⚡ Effective for identifying the **end of bearish corrections**
- ⚡ Base zone typically hosts **leftover buy orders**



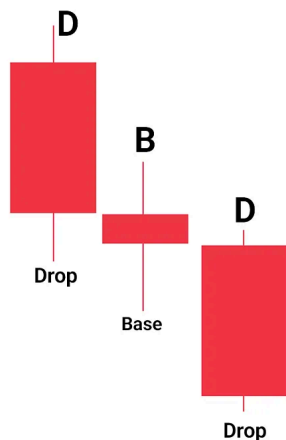
Buy order absorption through a Drop–Base–Rally (DBR) structure in RTM Price Action

Drop–Base–Drop (DBD) in RTM

Price falls due to selling pressure, pauses in a **base**, then **continues falling** as sellers return. This structure signals **full seller control**.

Use Cases of DBD:

- ⚡ Entry for short positions after a **retest of the base**
- ⚡ Indicates a **strong bearish trend** with high validity



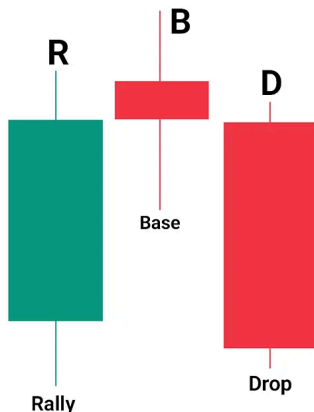
Active sellers forming a Drop-Base-Drop (DBD) structure in RTM Style Training

Rally-Base-Drop (RBD) in RTM

Price initially rallies, pauses in a **base**, then **drops** as selling pressure enters. This indicates **buyer exhaustion** and **new selling interest**.

Use Cases of RBD:

- ⚡ Useful for identifying **the end of rallies**
- ⚡ The base zone becomes an ideal **entry point for short trades**



Sell order absorption through a Rally-BaseDrop (RBD) structure in RTM Price Action

You May Like :



Complete Guide on Central Bank Dealers Range (CBDR)



Advanced Market Structure in ICT Style – STH & ITH & LTH – STL & STL & LTL



Mastering ICT Breakaway Gaps: A Comprehensive...



MSS vs Liquidity Grab in ICT – Trend Reversal & Optimal Entry/Exit

Zones in RTM Style

In **RTM**, certain supply and demand zones carry more significance. Based on their formation and how price has interacted with them, zones are categorized into three types:

- ⚡ **Authentic Zone**
- ⚡ **Reaction Zone**
- ⚡ **Fresh Zone**

Authentic Zone in RTM Style

In **RTM Price Action**, an **Authentic Zone** is a region where, for the **first time**, a strong imbalance between buyers and sellers caused a **powerful price move**.

This zone is **not** based on reactions to old structures. Instead, it acts as the **original source** of major orders and does **not overlap any previous zone**. As a result, it's considered the **most valid and reliable** zone in **RTM**.



First strong imbalance creates an Authentic Zone in RTM Style

Reaction Zone in RTM Method

Reaction Zone is an area that the price has **previously reacted to** and where a new structure now forms. It typically overlaps an older zone and may trigger another reaction due to **unfilled historical orders**.

Since it's not the origin of the first move, this zone is **less reliable** than an Authentic Zone and requires **more confirmation**, especially on **lower timeframes**, before entering a trade.



Fresh Zone in RTM

A **Fresh Zone** in **RTM Style** is a region that, after being formed, has **not yet been touched** by price. Because no orders have been triggered there, it has the **highest potential** to cause a strong reaction upon the first touch.

This initial touch, called **FTB (First Time Back)**, is often a **high-probability reversal point**. Therefore, **Fresh Zones** are prioritized over tested zones when looking for trades in **RTM Price Action**.



First touch of a Fresh Zone and formation of FTB (First Time Back) in RTM Training

Criteria for Zone Validity in RTM Price Action

In **RTM**, the **validity of a zone** is not based on appearance alone. Instead, it depends on **how the price behaves** around that area and whether it shows potential for **reversal or continuation**.

Base Candle Quality in RTM Style

To consider a zone **valid** in RTM, it must start with a **clear, high-quality base candle**—where the market pauses and shows a relative balance between buyers and sellers.

If the base is too large, extended, or made up of multiple candles, the zone's validity weakens. Even if there's a strong breakout or it's a **Fresh Zone**, **it can't be trusted unless the base is compact, clear, and well-defined**. Without that, analyzing other factors becomes irrelevant.

Departure Strength in RTM Style

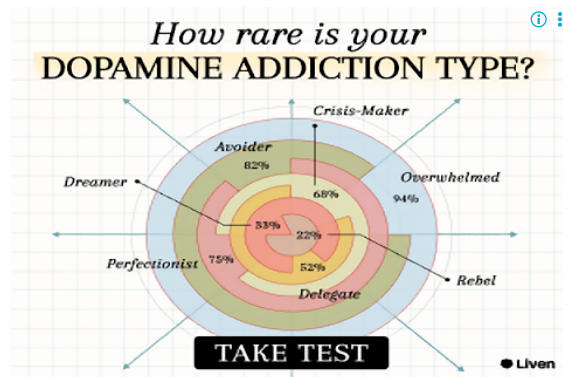
One of the most important indicators of a zone's **validity** in **RTM Style** is how the price departs from it. If the price exits the zone with a series of **strong and consecutive momentum candles**, it indicates the presence of significant orders and a **clear market imbalance**.

Conversely, if the price leaves the zone with just a **single weak candle** and then pauses or reverses, it's likely that the zone is **weak** or lacks **sufficient liquidity**. Therefore, a **strong, impulsive departure** is a clear sign of zone credibility and **heavy decisions made by major players**.

Alignment with Higher Timeframe Trend in RTM Method

Respecting the **higher timeframe trend** plays a key role in **validating zones** within RTM. If the direction of price movement in the analyzed timeframe **matches the higher timeframe trend**, there is a greater chance the zone will react effectively, and the price will **continue moving in the same direction**.

This alignment indicates that the trade is in the **direction of dominant liquidity flow**.



On the other hand, if the analyzed timeframe contradicts the higher timeframe trend—eve zone appears structurally sound—there is a higher risk of **invalidity or sudden reversal**. Th with higher timeframe trends is a crucial method for **reducing trade risk** in **RTM Price Act**

Types of Setups and Patterns in RTM Style

In **RTM Style Training**, trading setups are defined based on price behavior within key zones and structure breaks. These setups form the core of trade entries and are each based on **liquidity logic** and **reactions from large market participants**.

Engulfing Pattern in RTM

The **Engulfing pattern** in price action is one of the clearest signs of a **shift in control between buyers and sellers**. This pattern occurs when one candle **completely engulfs** the previous candle in terms of **opening and closing**.

If the second candle is **bullish** and fully covers the previous **bearish candle**, it's called a **Bullish Engulf**, indicating strong buyer entry and **likely upward movement**. Conversely, if the second candle is **bearish** and engulfs a bullish candle, it forms a **Bearish Engulf**, suggesting a potential price drop.

Cryptocurrency Trading Course

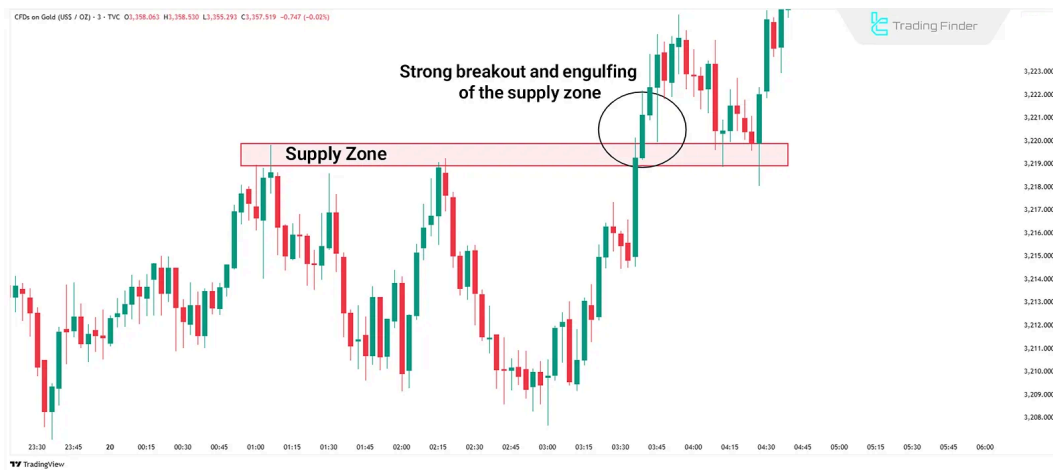
Unlock Crypto Potential! Get Certified and Master Trading Strategies with Expert Guidance

In

d:

big player entries, and **zone validation**.

blockch

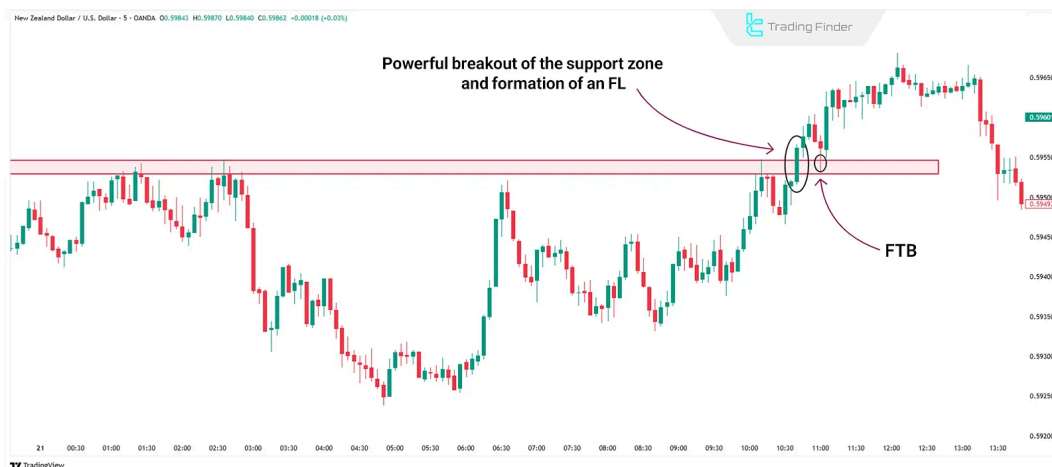


Sudden break and engulfing of a supply zone in RTM Style

FL (Fail to Return) Setup in RTM

The **FL Setup** is a widely used entry pattern in **RTM Style**, built on the **strong break** of key **Support and Resistance (SR)** zones, forming a new valid trading area.

As the price approaches an important SR zone, it often pauses briefly, forming **tight base candles**. After breaking the zone—often forming a structure like **DBD** or **RBR**—a new area forms on the broken SR level, known as the **FL Zone**.



Powerful break of support zone in FL setup

Key Traits of the FL Setup

A **strong and fast departure** from the SR zone, **Minimal pause** before the break and indicates untriggered pending orders that **react on retest**.

Sometimes, the base candle is unclear; switching to a **lower timeframe** helps identify it. If a gap forms without a visible base, the **gap itself** may indicate **rapid** price departure—though this adds risk.

Cryptocurrency Trading Course

Unlock Crypto Potential! Get Certified and Master Trading Strategies with Expert Guidance

U
lo

blockch

FTR (Fail to Return) Pattern in RTM

The **FTR Setup** is a **continuation pattern** in **RTM Price Action** based on the price **failing to return** to a broken SR zone.

Price first **engulfs an SR level** with a momentum candle, then continues and creates a **new SR**. On the pullback, it **fails to reach** the original SR, instead pausing nearby and forming a **base candle**, creating what's known as the **FTR Zone**.

Price then **breaks the second SR** with force. On returning to the **FTR Zone**, it often reacts strongly, offering a **trade entry**. This setup is marked by **two consecutive breaks** in the new trend's direction—a sign of strength.

If the **FTR Zone** is later broken in the **opposite direction**, it may signal **trend exhaustion** and the beginning of a new structure.



Price reaction to FTR zone in RTM Training

Caps Pattern in RTM Price Action

The **Caps Pattern** in **RTM Style** is a **reversal setup** that forms near-market **highs**. Price first rises with momentum, and **professional traders take partial profits**, causing a minor correction. Price then climbs again, luring **inexperienced traders** into **false long positions**.

At this point, **smart money absorbs liquidity** and executes **heavy selling**, reversing the trend. The zone formed before the drop becomes the **Caps Zone**, suitable for **high-risk-to-reward short entries**.



Liquidity absorption by professionals in Caps zone – RTM Price Action

Swap Setup in RTM

In the **Swap Setup**, a strong supply or demand zone **changes role** when the price **breaks it powerfully** with momentum. The former **supply becomes demand**, or vice versa.

This occurs as **retail traders enter trades against the trend**, only for the price to **break through the zone**, triggering their stop-losses. Later, when the price returns to the broken zone, these same traders now **join the trend**, reinforcing the zone's **new function**.



Conversion of supply to demand and formation of Swap zone

PAZ (Price Action Zone) Pattern in RTM

In **RTM Style**, the **PAZ (Price Action Zone)** forms **between two key structures**, such as **FL** or **FTR**. This zone typically emerges after the price **breaks a previous structure against the dominant trend** using a momentum move, suggesting entry into a **liquidity vacuum**.

Once inside the **PAZ**, the price often continues toward the next major structure. This zone signals a **shift in order flow** or **trader sentiment** and may offer **short-term trading opportunities**—though it is **not ideal for major entries** unless confirmed by other RTM elements.



Liquidity void and PAZ (Price Action Zone) formation in RTM Style

3Drive Setup in RTM Price Action

The **3Drive pattern** in RTM is a **confirmation structure** that analyzes price behavior **before reaching a major supply or demand zone**. Price forms **three consecutive highs or lows**, each with **diminishing momentum**, indicating **trend exhaustion**.

Though similar to Compression, the 3Drive focuses more on the **number of waves**. It's a sign of **market fatigue**, and when the price reaches the target zone, a **reversal is likely**.



Your First Step to Fitness

Simple workouts to start. No hassle, just effective exercises!

MadMuscles

analysis of potential price reversals.

Tip: For ease of use, you can utilize the **RTM 3Drive Indicator** provided by **Trading Finder T**

- ⚡ **RTM 3Drive Indicator for MetaTrader 4**
- ⚡ **RTM 3Drive Indicator for MetaTrader 5**
- ⚡ **RTM 3Drive Indicator for TradingView**



Formation of the 3Drive pattern using three price waves in RTM Price Action

CP (Compression) Setup in RTM Price Action

The **Compression Setup** in the RTM Style indicates a **gradual weakening** of the dominant trend and a high probability of **sharp reversal**.

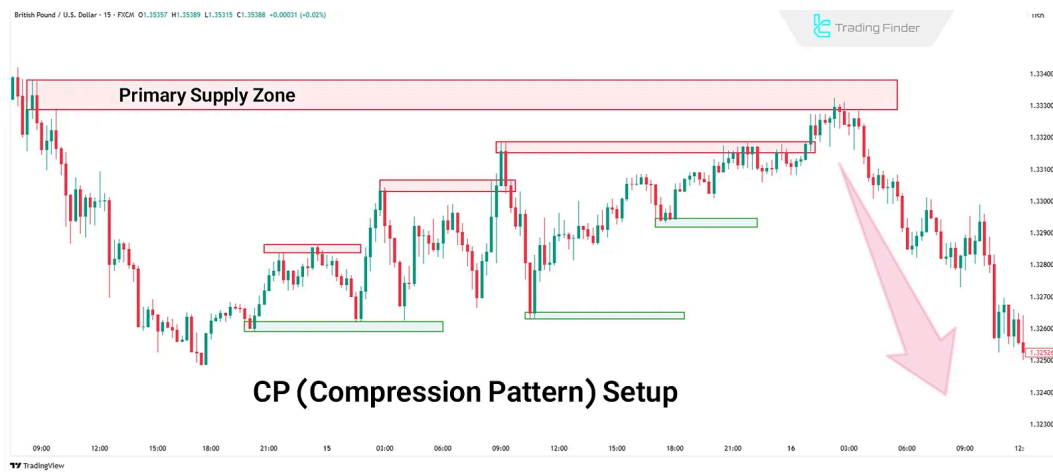
In this structure, as the price approaches a significant zone, it creates **several supply or demand zones** that are stacked and repeatedly tested.



These repeated tests **drain liquidity**, leaving no resistance when the price hits the final maj resulting in a **strong move in the opposite direction**. **Demand-side compression** leads to then a **drop**, then another **rally**. **Supply-side compression** results in a **drop**, rally, then anot

The power of this setup depends on, The **number of tested zones**, The **depth and quality reactions**.

Compression is most useful as a **confirmation** of strong zones, as it reflects **liquidity absorption** and market preparation for a **major move**.



Gradual trend weakness and sharp drop after hitting main supply zone in RTM Training

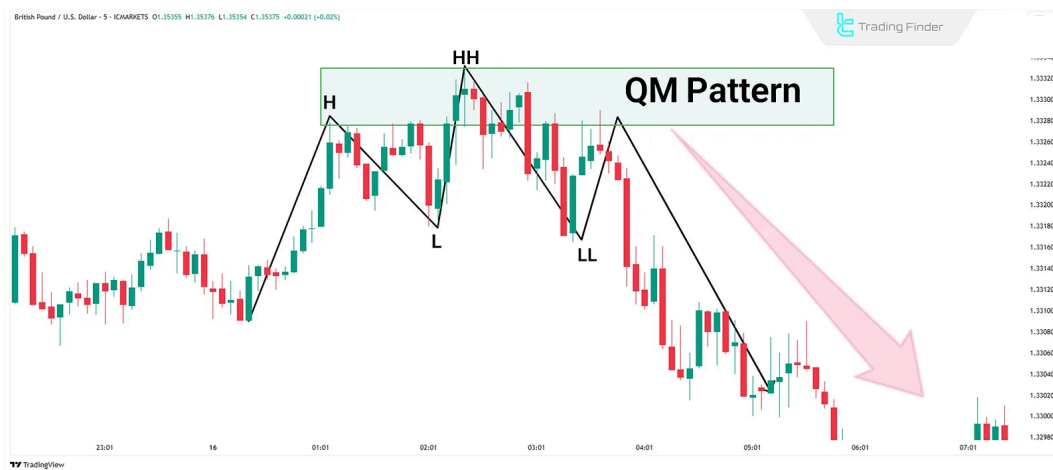
Quasimodo (QM) Pattern in RTM Style

The **QM pattern** in RTM is a **reversal structure** based on **consecutive structure breaks** and **trader manipulation**. It typically appears when the dominant trend is nearing its end, and the price is ready to **reverse**.

The pattern features **two opposite engulfing moves**—the first challenges the trend; the second completely invalidates it.

How to Increase QM Pattern Validity

If the final break also **engulfs an old supply/demand zone**, the likelihood of **success** is much **higher**. The QM structure is a **precise signal** of a **true trend reversal**.



How the Quasimodo (QM) pattern forms using consecutive structure breaks

Bearish QM

The **Bearish Quasimodo (QM)** pattern begins within an **uptrend**, where the price forms a **Higher High (HH)**, followed by a **pullback** to a **Higher Low (HL)**. The market then prints a new, even higher peak (**HHH**), continuing the bullish structure.

However, in a sudden shift, price **breaks below the previous HL**, signaling a **loss of buyer control** and the **entry of strong sellers**. This structural break marks a potential reversal point. The area between

the last two highs (HH and HHH) becomes the **QM Supply Zone**, a high-probability level for initiating **short trades** in anticipation of a **downward move**.

Bullish QM

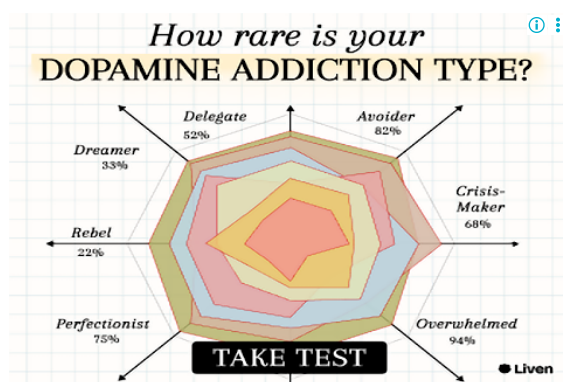
The **Bullish Quasimodo (QM)** pattern forms after a series of **lower lows**, signaling a prevailing downtrend. Suddenly, the price **engulfs the previous high**, indicating a shift in market sentiment and the emergence of **buyer strength**.

This move often **traps traders** who had entered short positions based on the previous bearish structure, generating the **liquidity required for a true reversal**. The area between the last two lows becomes the **QM Demand Zone**, offering a **high-probability entry point for long trades** as the market transitions into a potential uptrend.

Can Can Setup in RTM

The **Can Can Setup** is a **rare but powerful** reversal pattern combining **Caps** and **Compression (CP)**. It begins with a strong **RBR** structure and is based in a **demand zone**.

Surprisingly, price **engulfs** this demand zone. As it returns to the broken zone (caps), it enters a **compression state**, forming several consecutive supply or demand areas—marking **CP** behavior.



When the price reaches the **caps zone** again, lacking support liquidity, a **sharp reversal** or powerful reversal zone is known as the **Can Can Zone**, marking the **end of manipulation** a market direction. This strategy, requires **precise structure reading** and **multi-step confi**



Valid reversal zone and strong reaction in Can Can setup – RTM Training

QML and MPL in RTM Style

In RTM, **QML (Quasimodo Line)** is the **first peak or trough** with a **base candle**, defining the start of the QM structure.

MPL (Maximum Pain Level) is the **second high or low** formed afterward—where large amounts of **liquidity are trapped**. The **main price reaction** usually happens at the **MPL**, making it the ideal **entry point**.



Identifying Quasimodo Line and Maximum Pain Level in RTM Price Action

Diamond Pattern in RTM

The **Diamond Pattern** in RTM is a **complex reversal formation** combining structure break, trader manipulation, and broken market expectations.

It often follows a **QM pattern** but differs in that the **QM reaction point is engulfed**, not respected. Price then extends beyond it.

How the Diamond Pattern Works?

Price reacts to a supply/demand zone and attracts entries but then **engulfs the zone**, taking liquidity. It then **abruptly reverses**, breaks trendlines, and initiates the **main reversal move**.

Its **symmetrical structure** gives it a **diamond-like appearance**, making it one of the most deceptive and powerful reversal setups in RTM.



Formation of the Diamond Pattern in RTM Price Action

You May Like :



Commodity Channel Index Oscillator (CCI) Download MT5 - Free...



Heiken Ashi Indicator for MetaTrader 5 Download - Free



CISD - CSD + FVG - IFVG Indicator for MT5 - Free ...



Trend Line Indicator for MetaTrader 4 Download - Free ...

Conclusion

RTM Style provides a methodology to analyze price behavior around key zones using **market structure, order flow, and liquidity**. Its main focus is on identifying entry and exit points based on the **logic of price movement**.

By leveraging structures like **RBR, DBR, DBD, and RBD**, analyzing **untouched zones**, evaluating **candle types**, and **structure breaks**, RTM facilitates precise market interpretation.

Earn \$28 - \$65 an Hour

Currently Hiring People to Copy & Paste

Se
st

reaction timing, and position management.

FAQs

- What is RTM's approach to market analysis? ∨
RTM views price as a reflection of **order flow and liquidity**. Instead of forecasting, traders analyze how price moves due to the actions of **large investors**.
- How does RTM differ from other price action methods? ∨

Table Of Content

- What Is RTM Style? ∨
- Table of Advantages and Disadvantages of RTM Style
- Candles in RTM Style ∨ ×
- RTM Base Candle ∨

RTM Momentum Candle

Differences Between Momentum Candle and Base Candle in RTM Style

Core Concepts of RTM Style

The Four Market Structures in RTM Style

Zones in RTM Style

Fresh Zone in RTM

Criteria for Zone Validity in RTM Price Action

Types of Setups and Patterns in RTM Style

Conclusion

market direction shift.

How is an FL setup formed?

Top Posts

Price hits an SR zone, pauses, and then **breaks it with momentum**, creating a **new base** on the broken level.



Turtle Soup Strategy from ICT Style
Difference between FTR and FL?

Arjun Mandal | Dec 23, 2024

In **FL**, the price **fails to return** to the old SR. In **FL**, it **engulfs** the SR and forms a new structure.

8,089 Views



What CAPS setup indicate?
What is an ICT Order Block and How to Trade It?

It indicates **buying** after a two-stage rally, **professionals sell**, reversing the market.

8,621 Views

When does the Swap pattern occur?



Break of Structure (BOS) reaction, it flips from **supply to demand (or vice versa)** and **role**.

Aranya | Dec 22, 2024

8,056 Views

What is the PAZ zone?

A **Price Action Zone** between two key structures (e.g., FL/FTR) that price enters after one is engulfed.

What's the purpose of the 3Drive pattern?

It reflects **trend exhaustion** and preps for a reversal—often seen before hitting a major zone.

Our Social Media

How does Compression (CP) work in RTM?



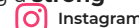
Price tests multiple zones repeatedly, draining liquidity, and then **explodes in the opposite direction**.



What is the QM pattern in RTM?



A **reversal structure** with two opposite breaks invalidating the prior trend and creating a **strong reaction zone**.



What's the difference between QML and MPL in QM?



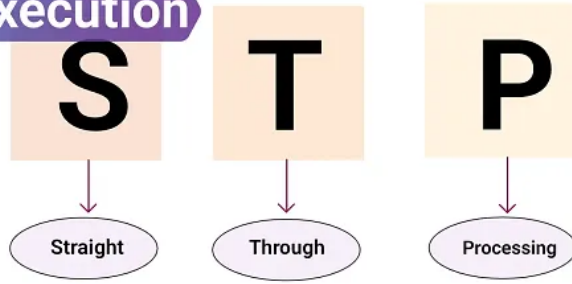
QML is the first base peak/trough, while **MPL** is where **most liquidity accumulates**, making it the **ideal entry point**.

What's the role of candles in RTM?

They represent **buyer/seller dominance**. Identifying **base** and **momentum** candles reveals key zones.

Latest Articles

STP Execution



(1)

STP Execution Model: Routing Trade Orders Directly to Liquidity Providers

Forex Education

Eda Kaya | Jul 11, 2025

How do Forex brokers work?



[Write a comment](#)

How do Forex brokers work? STP vs. ECN + A-Book, B-Book, and C-Book Brokers

Interesting Financial Articles

Sinan Aydin | Jul 10, 2025

What is Trading Plan?



What Is a Trading Plan? Including Strategy, Journaling, and Risk Management

Forex Education

Nino Gogochashvili | Jul 9, 2025



Complete training in financial markets such as "Forex," "Stock Market," and "Cryptocurrencies" only becomes comprehensive with tested trading tools and strategies. "Trading Finder," with its experience, aids traders and investors in gaining a correct understanding and deep learning. The training programs are designed based on tools for traders of all levels, from "beginner to advanced."

 English (EN) ▼

[About Us](#)

[Contact Us](#)

[Forex Methodology](#)

[Our Team](#)

[Jobs](#)

[Report a Bug](#)

[Advertisement](#)

[Affiliates](#)

[Our Scores](#)

[Indicators & Oscillators](#)

[Products](#)

[Financial Market Education](#)

[Trading Tools](#)

[Trading Tools](#)

Risk Disclosure:

Participating in financial markets involves high risk, which can result in the loss of part or all of your investment. There are no

[Show More](#) ▼

Disclaimer:

[TradingFinder.com] assumes no responsibility for any potential losses or damages. All decisions are the sole responsibility of

[Show More](#) ▼

Disclosure of revenues and advertisements:

The "TradingFinder" platform offers various services, some of which, like introductions, are free, while others, such as our

[Show More](#) ▼

[Privacy Policy](#)

[Risk Warning](#)

[Cookies Policy](#)

[Copyright and Idea Submissions](#)

[Terms and Conditions Agreement](#)

© 2025 TradingFinder, Inc. All rights reserved.