

## 5 New Courses from Andrew Ng


Coursera

Learn More

TradingFinder > Education > Forex Education > Venom Strategy in ICT Style (Venom); Intraday Tr...

# Venom Strategy in ICT Style (Venom); Intraday Trading on US Stock Indices

Categories: [Forex Education](#) [ICT \(Inner Circle Trader\) Education](#)

Article Level: **Advanced** 



Writer:  
Nino Gogochashvili



Reviewer:  
Sinan Aydin




Fact checker:  
Rajesh Sharma



Modified: Jun 7, 2025

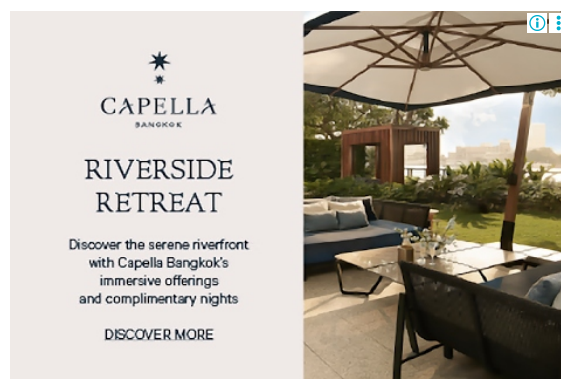
 Comments: 0

 Views: 231

 7 Min

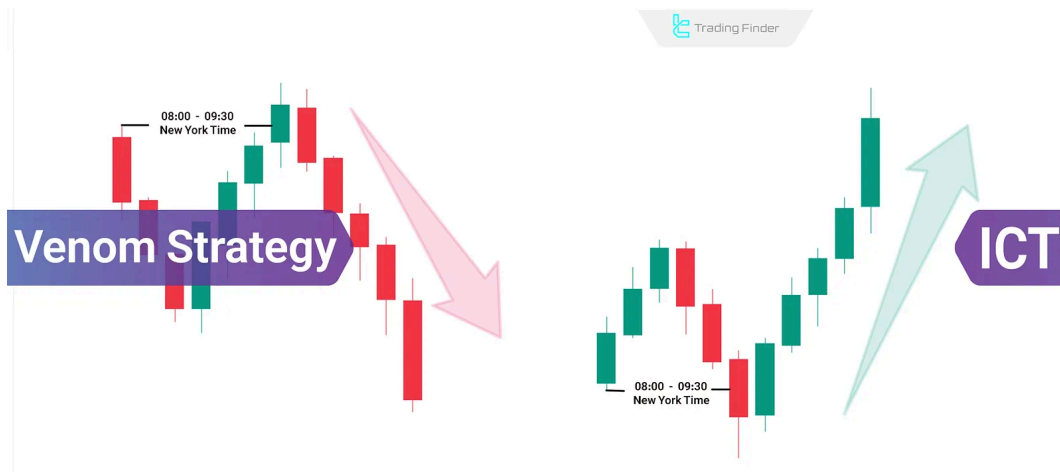
The **Venom model (ICT Venom)** is an advanced strategy in the **ICT style**, built upon three critical concepts of **Liquidity, Time, and Price**.

This model is specifically designed for **intraday trading** on US stock indices such as **US100, US30, and US500** and operates based on the **Liquidity Sweep + Reversal** pattern.



In other words, **after an initial liquidity grab**, the price moves back in its **original direction**

**Venom** focuses on identifying **Market Structure**, **Market Shift Signals (MSS/CISD)**, and **Fair Gaps (FVG)**. With this combination, entry and exit points can be identified accurately and ti



Learning the Venom Strategy in ICT Style

## What is the Venom Strategy?

The **Venom model** is centered around **price action during the New York session** and its **interaction with initial market liquidity**.

Venom emphasizes the time window between **08:00 and 09:30 AM New York time**, defining the **initial range**.

After the official market **opens**, the price typically breaks **one** side of this range to **gather liquidity**.

i ⋮

5 New Courses from Andrew Ng

Coursera
Learr

- ⚡ **Liquidity Sweep**
- ⚡ **Fair Value Gap (FVG)**
- ⚡ **Market Structure Shift (MSS)**
- ⚡ **Change in State Delivery (CISD)**

## Time & Structural Logic Behind Venom (ICT)

The **ICT Venom model** is designed around a **90-minute window** before the official New York opens.

This range, known as the **Initial Balance Range**, captures early price fluctuations and accumulates the market's **initial liquidity**.

# 5 New Courses from Andrew Ng

Deep Learning by deeplearning.ai | Coursera

De  
all

## Types of Venom Model in ICT

The **Venom model** is executed in two primary structures, both based on the initial liquidity range break and swift price reversal. However, the movement direction and entry structure vary.

### ICT Venom Bullish Model

In the **bullish Venom model**, the initial price range between **08:00 and 09:30 AM New York time** is defined, marking the session's high and low.

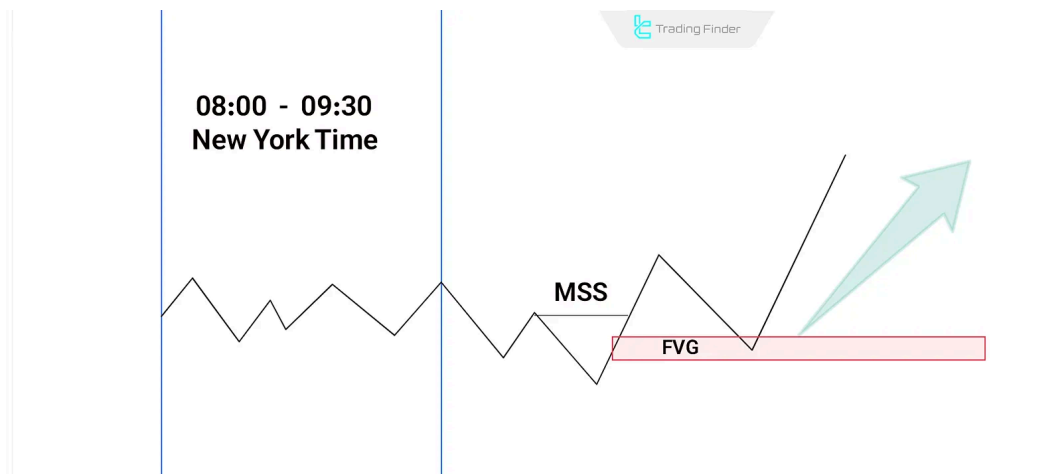
After the market opens officially, if the price falsely breaks the lower boundary, it's a sign of **liquidity collection on the sell side**.



If followed by a **market structure shift** with patterns like **MSS** or **CISD**, a reversal is likely.

A suitable **entry point** occurs when the price returns to a **demand zone** or **PD array**. For **risk management**, the stop-loss is placed slightly below the false break low, with targets first at the top of

the **initial range** and then at the **day/week high**.



Bullish Schematic of Venom Strategy in ICT Style

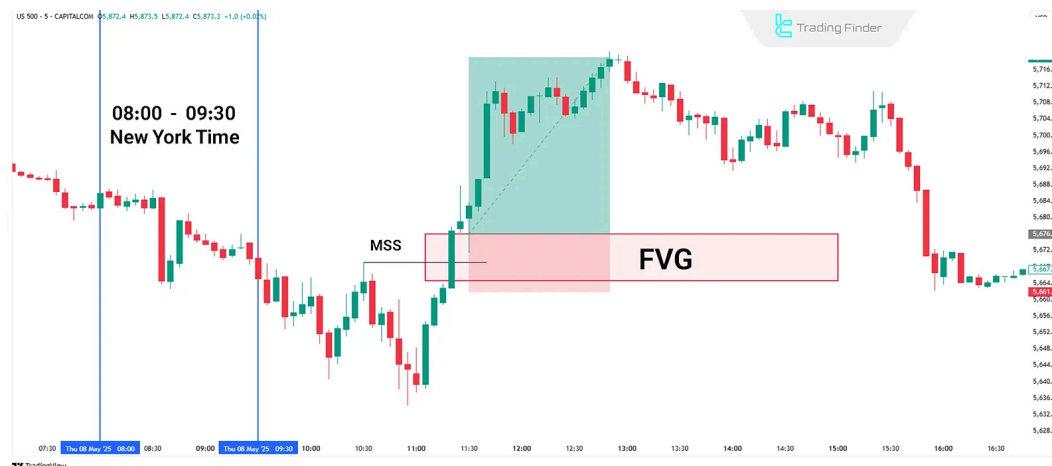
### Venom Strategy Example in a Bullish Market

Based on the **US500 price chart**, the initial price range between **08:00 and 09:30 AM New York time** is marked.

After the market opens at 09:30, the price falsely dips below the range low, indicating **liquidity absorption on the sell side**.

Then, with the appearance of **MSS** and **Change in the State of Delivery**, a trade entry is planned.

As seen on the chart, once the price hits the **FVG zone**, a **long position** is taken. The stop-loss is slightly below the false low, and the **take-profit** is set at the **daily high**.



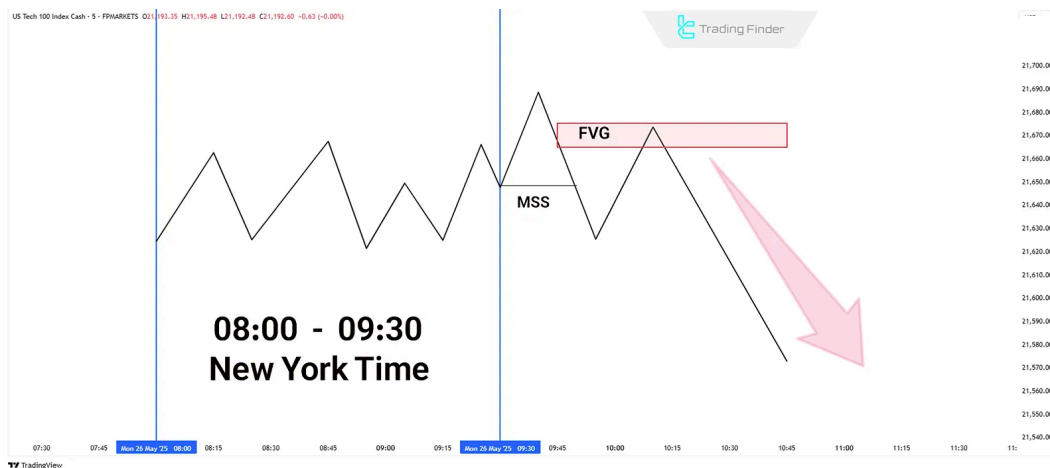
## ICT Venom Bearish Model

In **bearish Venom strategy**, the 90-minute range between **08:00 and 09:30 AM New York time** is defined, setting the high and low of that window.

After the official New York opens at 09:30, if the price moves above this range and then quickly reverses, it signals **liquidity collection on the buy side**.

If **MSS** or **CISD** signals appear, a bearish move is likely. An **entry point** forms when the price retraces to a **supply zone** or **higher PD arrays**.

In this case, stop-loss should be placed just above the liquidity range high, with **targets** at the range low and lower support levels.



Bearish Schematic of Venom Strategy in ICT Style

## Venom Strategy Example in a Bearish Market

Based on the **US100 (NASDAQ) price chart**, the range from **08:00 to 09:30 AM New York time** is defined as the **initial price range**.

After the official session opens at 09:30, the price temporarily exceeds the range high, signaling **liquidity collection on the buy side**.

Upon detecting **MSS** and reversal confirmations, a **short entry** is considered. Once the price corrects into the **FVG zone**, the trade is **executed**.

Stop-loss is set slightly above the high, and **targets** are placed at the daily low or lower support levels.



ICT Venom Strategy Performance on NASDAQ Chart in Downtrend

## Conclusion

The **Venom model (ICT Venom)** is a strategy based on **institutional liquidity**, aligning smart money entry timing with market structure to identify **fake breakouts** and capture valid moves.

Its focus lies in filtering true trends from false moves and analyzing key market players' behavior. Effective implementation requires **technical analysis** of key levels like equal highs/lows and order blocks, paired with **precise timing**.

This strategy serves not just as an entry method but also as a **market liquidity flow analysis model** during the **New York session**.

## FAQs

- What core concepts is the Venom strategy based on? ∨
- It relies on three pillars of **Liquidity**, **Time**, and **Price**; which form the **foundation** for **market behavior analysis**.
- Which markets are the Venom model most suitable for? ∨
- It is tailored for **intraday trading** on US indices like **US500, US30, and US100**.
- Which time frame is crucial in the Venom strategy? ∨
- The **08:00 to 09:30 AM New York time** range serves as the primary analysis window.
- When is the best entry point in Venom's strategy? ∨
- After a **liquidity sweep**, if the **market structure changes** and price returns to **key areas** like **FVG**, a high probability entry emerges.
- What is the Initial Balance Range? ∨
- A zone reflecting early price fluctuations before the official market opens.
- What signs trigger entries in the bullish Venom model? ∨
- A **false break of the range low**, **market structure shift**, and a **return to demand zones**.
- Where is the stop-loss placed in Venom? ∨
- Slightly below or above the **extremes** formed during the fake move.
- What's the difference between low-spread and commission-free accounts in Venom? ∨
- What's the difference between low-spread and commission-free accounts in Venom?**
- Is Venom only for long trades? ∨

No, it works in **both bullish and bearish markets**, each with distinct setups.

What is the ultimate goal of the Venom strategy? ▼

To identify **hidden liquidity** and trade in alignment with **smart money**, using market structure and key levels like **FVG** and **MSS**.

### Table Of Content ✕

What is the Venom Strategy?

Time & Structural Logic Behind Venom (ICT)

Types of Venom Model in ICT ▼

Conclusion

### Top Posts ♡



#### Break of Structure (BOS) on ICT

Eda Kaya | Dec 22, 2024

ent

[Write a comment](#)

8,009 Views



#### What is an ICT Order Block and How to Trade It?

Ram Nisha | Dec 23, 2024

8,559 Views

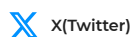



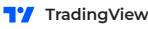


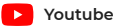

#### Turtle Soup Strategy from ICT Style

Arjun Mandal | Dec 23, 2024

8,027 Views

### Our Social Media



### Latest Articles



#### What is a Trading Plan? Including Strategy, Journaling, and Risk Management

Forex Education

Nino Gogochashvili | Jul 9, 2025



#### Corrective Waves in Elliott Theory: Zigzag, Triangle, and Combination Patterns

Forex Education

Nino Gogochashvili | Jul 8, 2025



#### What Problems Did Bitcoin Solve? Solution to Double Spending and Centralization



Complete training in financial markets such as "Forex," "Stock Market," and "Cryptocurrencies" only becomes comprehensive with tested trading tools and strategies. "Trading Finder," with its experience, aids traders and investors in gaining a correct understanding and deep learning. The training programs are designed based on tools for traders of all levels, from "beginner to advanced."



 English (EN) 

About Us

Contact Us

Forex Methodology

Our Team

Jobs

Report a Bug

Advertisement

Affiliates

Our Scores

Indicators & Oscillators

Products

Financial Market Education

Trading Tools

Trading Tools

**Risk Disclosure:**

Participating in financial markets involves high risk, which can result in the loss of part or all of your investment. There are no

[Show More](#) 

**Disclaimer:**

[TradingFinder.com] assumes no responsibility for any potential losses or damages. All decisions are the sole responsibility of

[Show More](#) 

**Disclosure of revenues and advertisements:**

The "TradingFinder" platform offers various services, some of which, like introductions, are free, while others, such as our

[Show More](#) 

[Privacy Policy](#)

[Risk Warning](#)

[Cookies Policy](#)

[Copyright and Idea Submissions](#)

[Terms and Conditions Agreement](#)

© 2025 TradingFinder, Inc. All rights reserved.