

## فكرتك اسم نطاق




الإلكتروني إلى منصة فعّالة وجذابة مع GoDaddy™

GoDaddy™

TradingFinder &gt; Education &gt; Forex Education &gt; What Is Stop Loss and Take Profit? - Role in Risk ...

## What Is Stop Loss and Take Profit? - Role in Risk and Capital Management


Categories: Forex Education Trading Education

Article Level: Elementry Writer:  
Rajesh SharmaReviewer:  
Davit KvaratskheliaFact checker:  
Nino Gogochashvili

Modified: Jun 1, 2025

 Comments: 0

 Views: 222

 11 Min

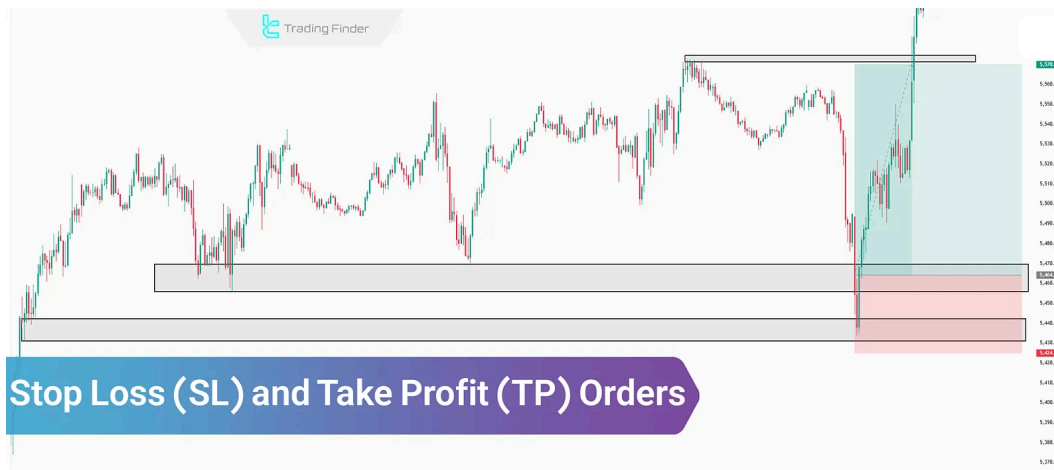
Placing **stop loss and take profit** orders on the trading platform helps determine the right time to exit a trade under different market conditions.

When a trade is in profit, a **take profit** (TP) order is used to **exit** the market at a **favorable level**. Conversely, when the market moves against the trade, a **stop loss** (SL) order is **triggered** to prevent further losses.

## Chat w/ Online Experts 24/7

A Technician Will Answer Your Questions in Minutes. Chat Now.

Th



Tutorial on Take Profit (TP) and Stop Loss (SL) Orders

## What Is Stop Loss?

**Stop loss** is a risk management tool that **closes** a trade when the price **moves** against the **initial analysis**, preventing further loss.

## Types of Stop Loss

Depending on the trading strategy—**technical, time-based, fundamental**, etc.—various methods are used to set stop loss orders, each suited to **specific market conditions** and **price action behavior**.



Stop loss orders are categorized into fixed, trailing, and time-based types

### Trailing Stop Loss

In a **trailing stop** order, if the price moves in the anticipated profitable direction, the stop loss moves along with the price to lock in gains. However, if the price reverses, the stop loss remains **fixed** to **close** the trade at a defined level.

This type of stop loss allows trade management **with out constant monitoring**.

### Fixed Stop Loss

In this **strategy**, a set percentage of capital is placed at risk for each trade. Before entering a position, the **position size** is calculated based on the predefined risk and the price level at which that amount

would be lost is determined. A **fixed stop loss** is then placed at that level.

This helps ensure that no trade results in a loss greater than the predefined risk limit.

### Time-Based Stop Loss

This method uses **time analysis** to determine optimal trading hours. Some trades must be closed before **market peak hours**, while others are only valid during **high-liquidity sessions**.

The **time-based stop loss** closes a trade at a specific hour or date regardless of price.

## What Is Take Profit?

**Take profit** (TP) order is triggered when the market moves in the **anticipated** direction. It automatically closes the trade at a favorable level and adds the realized profit to the trading account balance.

### Types of Take Profit

Depending on the analysis and trade duration, **take profit orders** fall into two categories:

- ⚡ **Good for Day (GFD)**: If the target price is not reached by the end of the trading day, the position is closed automatically;
- ⚡ **Good till Canceled (GTC)**: The order remains active until the price target is reached or the trader **cancels** it manually.



There are Two Types of take profit orders

## what is SL and TP Advantages and Disadvantages

Using **stop loss and take profit** orders enables effective **risk and capital management** in trading. However, these orders can also cap the maximum potential profit of a trade.

The table below outlines the pros and cons of using SL and TP orders:

Advantages	Disadvantages

Enhanced risk and capital management	Limits the profit potential of winning trades
Facilitates long-term performance tracking	Prone to stop hunting
Protects against large losses	May be triggered at inaccurate prices during high volatility
Defines risk-to-reward ratios	SL may trigger even if price doesn't reach the specified level precisely

## How to Calculate Stop Loss and Take Profit

The calculation of **stop loss and take profit** levels depends on the trading strategy and type of analysis used such as **fundamental** or **technical**.

### Calculation Based on Fundamental Analysis

In **fundamental analysis**, various factors of an asset are evaluated to estimate its **intrinsic value**. If the current price deviates significantly from this intrinsic value, a trade may be initiated. The **SL and TP levels** are then determined based on this **calculated fair value**.

### Calculation Based on Technical Analysis

In **technical analysis**, the market is examined through **liquidity behavior**. By identifying **support and resistance levels**, traders can set appropriate **stop loss and take profit** orders aligned with market structure.

### Practical Examples of Setting Stop Loss and Take Profit

In the example below, price moves toward a **resistance zone** after forming a range. A **candlestick pattern** confirms a reversal into a **downtrend**.

In this setup, the **stop loss** is placed above the resistance zone and the wick of the last bullish candle. The **take profit** target is set inside the first valid **support zone**.



Practical example of determining SL and TP zones using support and resistance

## what is SL and TP Importance and Application

The primary function of **stop loss and take profit** is to support **risk and capital management**. By setting SL and TP levels, the **risk-to-reward ratio** of each trade is defined, which helps maintain a consistently growing account over time.

### Capital Management

**Stop loss and take profit** orders determine how much of the total capital is at risk in each trade and how much will be added to the account if the trade is profitable.

Managing these amounts allows traders to evaluate their **long-term performance** effectively.

### Risk Management

Since financial markets are inherently uncertain, it's essential to manage the **risk exposure** of each trade using a **stop loss**.

Without risk control, long-term performance tracking becomes **unreliable**.

### Defining Risk-to-Reward Ratio

The **risk-to-reward ratio** is calculated using the following formula:

$$\text{Risk To Reward Ratio} = \frac{\text{Stop Loss Price} - \text{Entry Price}}{\text{Take Profit Price} - \text{Entry Price}}$$

Formula for calculating risk-to-reward ratio

Based on the **win rate** of different trading styles, it's advisable to avoid trades with a **risk-to-reward ratio below 1.1**.

## Set and Forget Trading System

The **Set and Forget** strategy involves entering a trade after market analysis and then stepping away from the market without further monitoring.

In this system, both **stop loss and take profit** orders are defined at the **time of entry**. The trade remains active until the price reaches either SL or TP—whichever comes first.

There is no active trade management during the position, making it a popular method among traders who prefer low-intervention strategies.

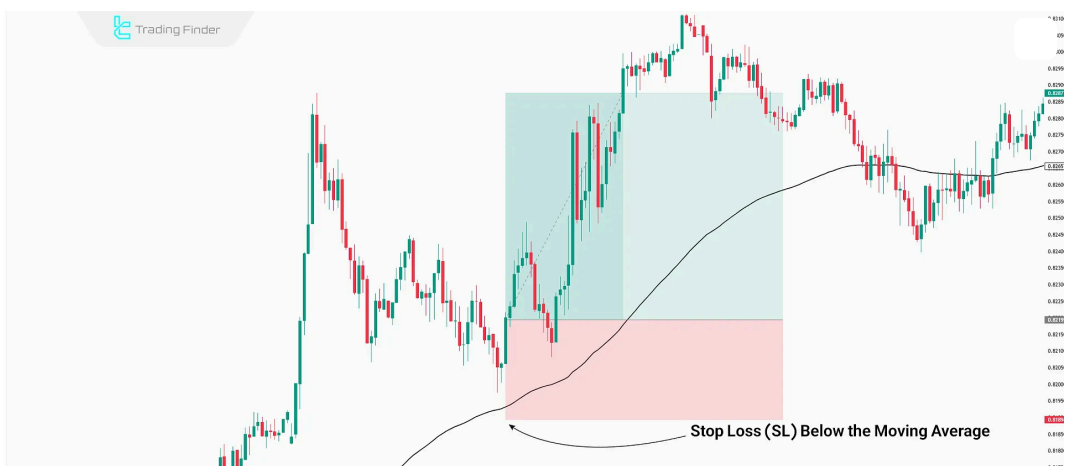
## Combining Stop Loss and Take Profit with Other Technical Analysis Tools

To refine the placement of **stop loss and take profit**, traders can use various **technical indicators**. These tools help identify SL and TP levels based on **liquidity behavior** and **historical price movement averages**.

### Using Moving Averages to Set SL and TP

A **moving average** line acts as dynamic **support or resistance**, depending on the price's position relative to it.

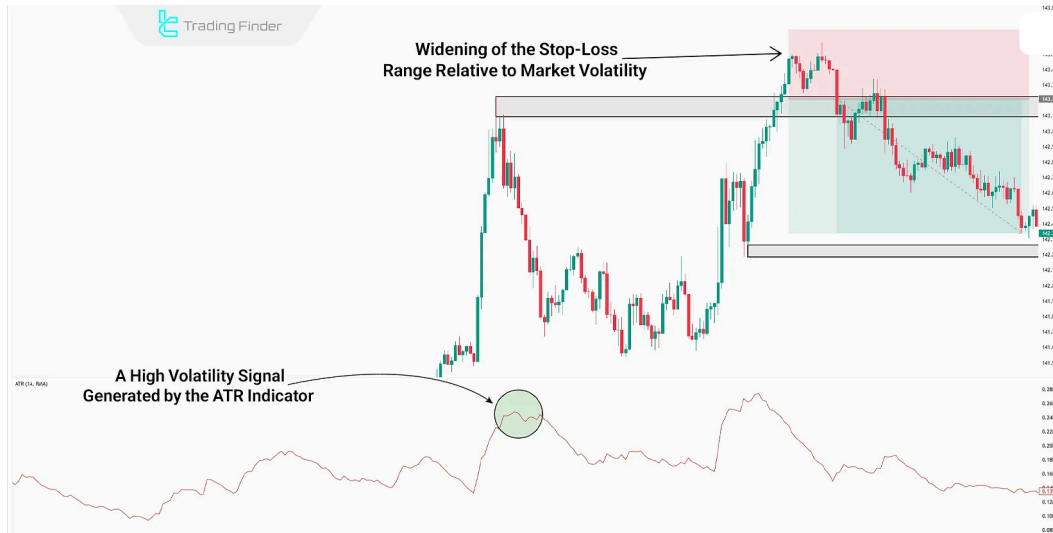
When price moves **below** the moving average, the **stop loss** is typically set **above** it. When price is **above**, the **SL** is set **below** the moving average line.



## Using the ATR Indicator to Set SL and TP

The **Average True Range (ATR)** indicator measures the market's current **volatility**.

If the **ATR** shows high volatility, it indicates longer price swings. As a result, the **distance between the entry point and SL/TP** should be wider than usual.



Assessing the stop loss range using the ATR indicator

## Common Mistakes in Setting Stop Loss and Take Profit

Accurately placing **stop loss and take profit** orders requires experience with specific trading styles, deep understanding of **market structure**, and detailed observation of **liquidity behavior**.

Some common mistakes that lead to premature stop-outs—even with correct analysis—include:

- ⚡ Using a **single time frame** for analysis
- ⚡ Failing to assess **liquidity direction**
- ⚡ Entering trades **emotionally**, without final confirmation
- ⚡ Placing SL too **close to the entry point**
- ⚡ Positioning SL **within key zones** such as support or resistance

## Conclusion

A **stop loss order** is placed at a specific price level to close a losing trade; if the market moves against the analysis, thereby limiting further losses.

A **take profit order**, on the other hand, is executed at a predefined level when the market moves in favor of the trade, securing the profit into the trading account.

Using **stop loss and take profit** orders enables traders to evaluate the **long-term performance** of their trading strategies.

Different types of SL and TP orders—such as **trailing stops** and **time-based stops**—are essential tools for managing **risk and capital**. By defining **SL and TP** for each trade, traders can calculate the **risk-to-reward ratio**, allowing for optimized trading decisions.

## FAQs

What is a stop loss order? ▼

It is an order that defines the amount of capital at risk in each trade.

What is a take profit order? ▼

A take profit order (TP) is a type of limit order used in trading to automatically close a position when the price reaches a predetermined profit level.

What is the main purpose of stop loss and take profit orders? ▼

They are used to manage **risk and capital** in a trading account.

What is the risk-to-reward ratio? ▼

It is the ratio between the capital lost in an unsuccessful trade and the capital gained in a successful one.

What is a trailing stop? ▼

A **trailing stop** is a stop loss that moves with the price as it progresses in the profitable direction, shrinking the potential loss as the trade gains value.

What is stop hunting?

This occurs when price triggers the stop loss before reversing back in the direction of the original analysis.

Do stop loss and take profit orders harm a trading strategy? ▼

No. Although they may sometimes limit profits, in the long term, they improve strategy performance.

Where should stop loss and take profit be placed in technical analysis setups? ▼

In most **technical analysis** setups, SL is placed behind support/resistance zones, and TP is set before the next support level.

What is the most common mistake in setting a stop loss range? ▼

Using a **single time frame** and failing to analyze past market behavior, often leads to incorrect SL placement.

How does the ATR indicator help in setting stop loss levels? ▼

The **ATR indicator** measures current market volatility, which helps determine the appropriate SL

**Table Of Content** ✕

What Is Stop Loss? ▼

What Is Take Profit? ▼

what is SL and TP Advantages and Disadvantages

How to Calculate Stop Loss and Take Profit ▼

Calculation Based on Fundamental Analysis

Calculation Based on Technical Analysis

Practical Examples of Setting Stop Loss and Take Profit

what is SL and TP Importance and Application

Combining Stop Loss and Take Profit with Other Technical Analysis Tools

Common Mistakes in Setting Stop Loss and Take Profit

Conclusion



### 0 Comment

[Write a comment](#)

### Top Posts



**What is an ICT Order Block and How to Trade It?**

Ram Nisha | Dec 23, 2024

8,526 Views



**Turtle Soup Strategy from ICT Style**

Arjun Mandal | Dec 23, 2024

8,001 Views

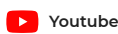
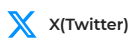


**Break of Structure (BOS) on ICT**

Eda Kaya | Dec 22, 2024

7,975 Views

### Our Social Media



### Latest Articles



Corrective Waves in Elliott Theory: Zigzag, Triangle, and Combination Patterns

Forex Education

Nino Gogochashvili | Jul 8, 2025



What Problems Did Bitcoin Solve? Solution to Double Spending and Centralization

Interesting Financial Articles

Sinan Aydin | Jul 7, 2025



Complete training in financial markets such as "Forex," "Stock Market," and "Cryptocurrencies" only becomes comprehensive with tested trading tools and strategies. "Trading Finder," with its experience, aids traders and investors in gaining a correct understanding and deep learning. The training programs are designed based on tools for traders of all levels, from "beginner to advanced."

English (EN) ▼

[Our Team](#)

[Jobs](#)

[Report a Bug](#)

[Advertisement](#)

[Affiliates](#)

[Our Scores](#)

[Indicators & Oscillators](#)

---

[Products](#)

---

[Financial Market Education](#)

---

[Trading Tools](#)

---

[Trading Tools](#)

---

**Risk Disclosure:**

Participating in financial markets involves high risk, which can result in the loss of part or all of your investment. There are no

[Show More](#) 

**Disclaimer:**

[TradingFinder.com] assumes no responsibility for any potential losses or damages. All decisions are the sole responsibility of

[Show More](#) 

**Disclosure of revenues and advertisements:**

The "TradingFinder" platform offers various services, some of which, like introductions, are free, while others, such as our

[Show More](#) 

[Privacy Policy](#)

[Risk Warning](#)

[Cookies Policy](#)

[Copyright and Idea Submissions](#)

[Terms and Conditions Agreement](#)

© 2025 TradingFinder, Inc. All rights reserved.