

Become a Master of AI Tools

Upgrade your career with in-demand AI skills

Coursiv

Learn More

TradingFinder > Education > Forex Education > ICT Weekly Range Expansion; Smart Money Strat...

ICT Weekly Range Expansion; Smart Money Strategy to Identify Price Expansion

Categories: Forex Education ICT (Inner Circle Trader) Education

Article Level: Expert

Writer: Arjun Mandal | Reviewer: Nino Gogochashvili | Fact checker: Ram Nisha | Modified: May 6, 2025

Comments: 0

Views: 378

6 Min

The **ICT Weekly Range Expansion Model** is an analytical approach used in **short-term** trading to **identify price expansions** throughout a trading week. The weekly range expansion is based on three key elements of **Fair Value Gap (FVG)**, **Liquidity Pool**, and **Old Highs/Lows**.



An example of the weekly expansion model in the gold ounce chart, broken down by trading days of the week

What is the ICT Weekly Range Expansion Model?

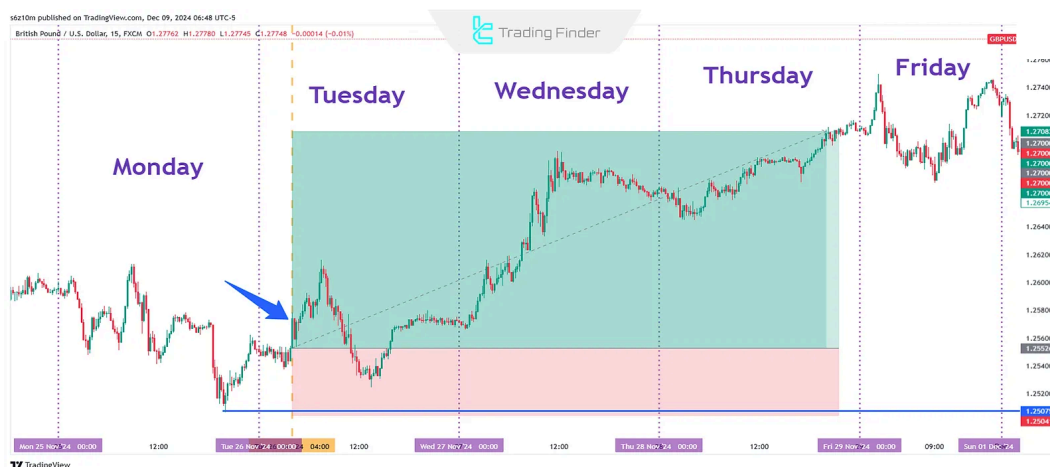
In **ICT style**, Weekly Range Expansion Model is a short-term strategy designed to profit from weekly market movements. This model operates based on three key components known as **PD Arrays**:

⚡ **Fair Value Gap (FVG):** Price areas formed due to market speed, where price seeks to return and fill the gap;

⚡ **Old Lows/Highs:** Areas where liquidity is concentrated, serving as price targets or reversal points;

⚡ **Liquidity Pool:** Areas where stop orders accumulate, attracting price movement.

Note: This model is applicable to various financial markets, including **Forex market, stocks, and cryptocurrencies.**



Example of the Weekly Expansion Model in a bullish scenario, showing the trading days, weekly low, and other components

Steps to Implement the ICT Weekly Range Expansion Model

To apply this model and execute a position, follow three main steps:

#1 Determine Weekly Direction

To determine the weekly market direction, first analyze the weekly chart. This step includes checking for market movements to fill Fair Value Gaps or gather liquidity from specific pools.

If the market moves towards higher highs and the structure is bullish, your weekly bias will be bullish. Conversely, the bias is bearish if the price moves towards lower lows.

#2 Identify the Range Expansion Setup

Once the direction is determined, identify the price range expansion. Typically, early in the week (**Monday**), the price establishes a specific range.

In fact, the range expansion occurs from **Tuesday to Thursday**. Analyzing lower timeframes (such as the **daily chart**) helps confirm this expansion.

#3 Execute the Trade

Based on the weekly bias and range expansion setup, execute your trades:

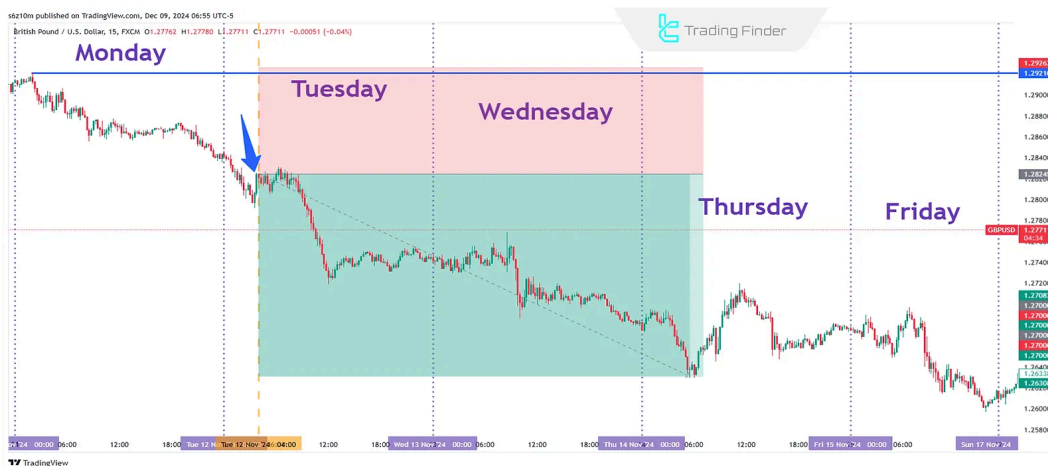
- ⚡ If the bias is **bullish**, enter a **buy trade** on **Tuesday at 4:00 AM (New York time)** when the candle opens;
- ⚡ If the bias is **bearish**, execute a **sell trade** at the same time.

How to Trade a Bullish Weekly Expansion?

To trade a **bullish weekly expansion**, follow these steps:

- ⚡ **Confirm Weekly Bullish Bias:** Check for **sell-side liquidity** being taken or price reaching the **discount zone**;
- ⚡ **Target Price:** Price typically moves toward **buy-side liquidity** or **premium zones**;
- ⚡ **Confirm Structure:** Look for a **market structure shift (MSS)** towards bullish on the **daily** timeframe;
- ⚡ **Execution Timing:** Enter **buy trades from Tuesday and hold until Thursday**.

For example, the following image illustrates a real-world execution of this model:



Example of a bullish weekly expansion model with all four execution steps displayed

How to Trade a Bearish Weekly Expansion?

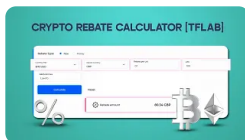
For **bearish trades**, follow the same steps but with a bearish confirmation:

- ⚡ **Confirm Weekly Bearish Bias:** Look for **buy-side liquidity** being taken or price reaching the **premium zone**;
- ⚡ **Target Price:** Price generally moves towards **sell-side liquidity** or **discount zones**;
- ⚡ **Confirm Structure:** Ensure a **market structure shift (MSS)** towards bearish on the **daily** timeframe;
- ⚡ **Execution Timing:** Enter **sell trades on Tuesday and hold until Thursday**.

You May Like :



Forex Pip Calculator
Tool 2025 [Calculate
+70 Assets by Enterin...



Crypto Rebate
Calculator tool -
Crypto Trading...



Forex Economic
Calendar Bot [Mini
App] [+21 Countries] -...



Central Bank Interest
Rates Tool [America,
Europe, Asia, and...

Key Considerations in Using the ICT Weekly Range Expansion Model

To correctly implement the concept of Weekly Range Expansion in the ICT style, consider the points below:

Determine Weekly Bias Accurately

Reviewing the **weekly timeframe** is essential to identify the primary price direction. For example, if the market took out **sell-side liquidity** last week and the price is in a **discount PD Array**, a bullish move in the upcoming week is likely.

Align Timeframes

It is critical to use the daily timeframe to confirm the weekly bias. For instance, a bullish market structure shift (MSS) in the daily timeframe confirms a bullish weekly bias.

Entry Timing

The **best entry point** is usually on **Tuesday**, as the range expansion phase begins around this time.

Logical Stop-Loss Placement

This model typically employs tight stop losses, which helps to manage risk effectively.

Common Mistakes When Using the ICT Weekly Range Expansion Model

- ⚡ **Incorrect Weekly Bias Determination:** Ignoring liquidity zones, premium, and discount areas can lead to **misinterpretation**;
- ⚡ **Entering Too Early or Too Late:** Trading before necessary confirmations or after the expansion phase leads to **poor results**;
- ⚡ **Ignoring Lower Timeframes:** Failing to analyze **market structure shifts (MSS)** in lower timeframes can result in **bad trades**;
- ⚡ **Overlooking News Events:** **Economic releases** and **macro news** impact weekly trends, and failing to consider them can lead to **incorrect trade timing**.

Conclusion

The **ICT Weekly Range Expansion Model** is a powerful tool for traders looking to refine their **trading precision** and **efficiency**. By combining **market structure analysis, liquidity identification, and proper timing**, this model helps traders capitalize on price movements.

FAQs

- Can this model be applied to all markets? ∨
Yes, it is versatile and applicable to Forex, stocks, and cryptocurrencies.
- What is the role of PD Arrays in this model? ∨

PD Arrays (including Fair Value Gaps, Old Highs/Lows, and Liquidity Pools) form the core of this model's analysis.

Why should trades start on Tuesday? v

Historical data indicates that Tuesday marks the beginning of the weekly range expansion. In bullish markets, Tuesday establishes the weekly low, while in bearish markets, it sets the weekly high.

What is the most common mistake traders make in this model? v

The most common mistake is **entering trades too early** without waiting for **weekly bias and range expansion confirmations**.

How can risk be managed within this model?

- Placing **logical stop-losses**;
- Analyzing **weekly and daily timeframes** to identify key reversal points;
- Adjusting **trade size based on risk tolerance**.

What is the ICT Weekly Range Expansion Model, and what is its purpose? v

The ICT Weekly Range Expansion Model is a short-term strategy that analyzes and trades based on weekly market movements.

When can the weekly market direction be determined? v

Weekly bias is typically identified early in the week, around Monday or even Sunday night.



5 From 5.0

(1)

Rate this post



Table Of Content



What is the ICT Weekly Range Expansion Model?

Steps to Implement the ICT Weekly Range Expansion Model v

How to Trade a Bullish Weekly Expansion?

How to Trade a Bearish Weekly Expansion?

Key Considerations in Using the ICT Weekly Range Expansion Model v

Common Mistakes When Using the ICT Weekly Range Expansion Model

Conclusion

Top Posts



What is an ICT Order Block and How to Trade It?

Ram Nisha | Dec 23, 2024

8,022 Views



Turtle Soup Strategy from ICT Style

Arjun Mandal | Dec 23, 2024

7,624 Views

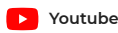
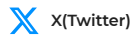


Break of Structure (BOS) on ICT

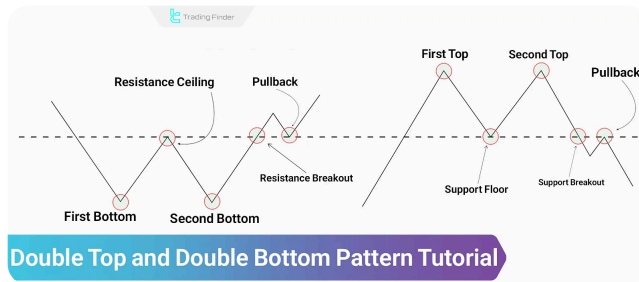
Eda Kaya | Dec 22, 2024

7,617 Views

Our Social Media



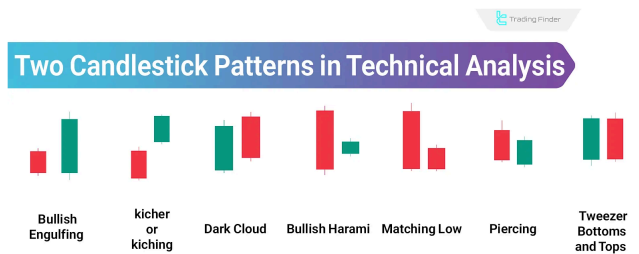
Latest Articles



Double Top and Double Bottom – Classic Reversal Pattern

Forex Education

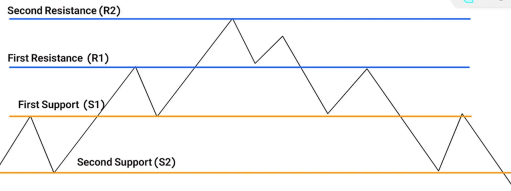
Ram Nisha | Jun 24, 2025



Dual Candlestick Patterns in Technical Analysis [Kicking, Harami, and Piercing]

Forex Education

Arjun Mandal | Jun 23, 2025



Pivot Point

Pivot Point in Technical Analysis: Entry, Exit, Stop-Loss, and Price Targets

Forex Education

Davit Kvaratskhelia | Jun 22, 2025



Complete training in financial markets such as "Forex," "Stock Market," and "Cryptocurrencies" only becomes comprehensive with tested trading tools and strategies. "Trading Finder," with its experience, aids traders and investors in gaining a correct understanding and deep learning. The training programs are designed based on tools for traders of all levels, from "beginner to advanced."



English (EN)
▼

[About Us](#)

[Our Team](#)

[Advertisement](#)

[Indicators & Oscillators](#)

[Trading Tools](#)

[Contact Us](#)

[Jobs](#)

[Affiliates](#)

[Products](#)

[Trading Tools](#)

[Forex Methodology](#)

[Report a Bug](#)

[Our Scores](#)

[Financial Market Education](#)

Leadership Strategies Ebook

Over 14 Leadership Strategies with Real-Life Examples.

Business Explained

Shc

Risk Disclosure:

Participating in financial markets involves high risk, which can result in the loss of part or all of your investment. There are no

[Show More](#) 

Disclaimer:

[TradingFinder.com] assumes no responsibility for any potential losses or damages. All decisions are the sole responsibility of

[Show More](#) 

Disclosure of revenues and advertisements:

The "TradingFinder" platform offers various services, some of which, like introductions, are free, while others, such as our

[Show More](#) 

Become a Master of AI Tools

Upgrade your career with in-demand AI skills

Coursiv

[Learn](#)

[Privacy Policy](#)

[Risk Warning](#)

[Cookies Policy](#)

[Copyright and Idea Submissions](#)

[Terms and Conditions Agreement](#)

© 2025 TradingFinder, Inc. All rights reserved.