

CHATGPT Powered CV

CV Lite

Open

TradingFinder > Education > Interesting Financial Articles > Introduction to 7 Technical Analysis Indicators – ...

Introduction to 7 Technical Analysis Indicators – MACD, RSI, Ichimoku & More

Categories: Interesting Financial Articles Indicators Financial Articles

Article Level: Intermediate

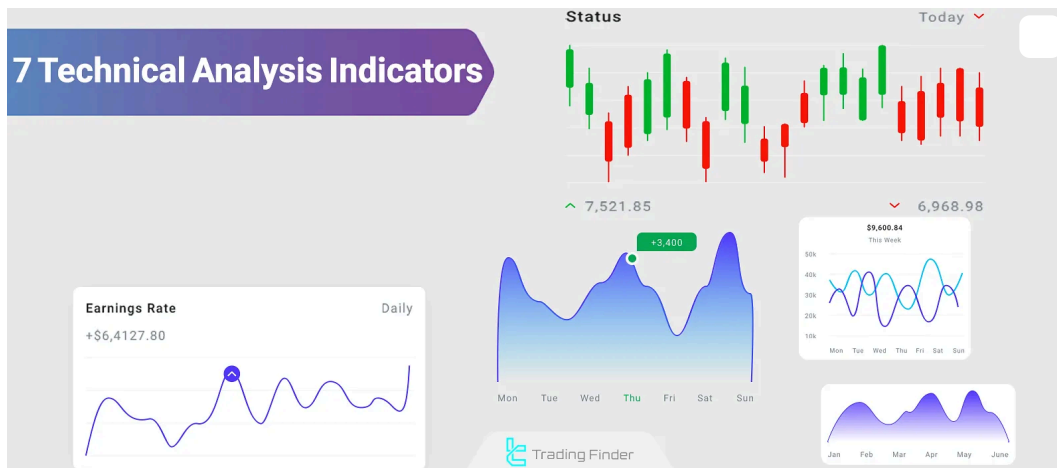
Writer: Nino Gogochashvili | Reviewer: Davit Kvaratskhelia | Fact checker: Rajesh Sharma | Modified: May 25, 2025

Comments: 0

Views: 286

8 Min

Technical Analysis Indicators, based on historical market data, help identify the next potential price movement. These tools analyze market **volume** and **momentum** to detect areas with the highest probability of price reaction.



Introduction to 7 Useful Technical Indicators

Introduction to 7 Technical Analysis Indicators

In the realm of **technical analysis** for financial markets like **Forex market**, **Analysis Indicators** are primarily used to identify the overall long-term trend. Below, we explore 7 widely-used **technical**

indicators in the market:

MACD Indicator

The **MACD (Moving Average Convergence Divergence)** indicator belongs to the **Oscillators** category and is designed to detect **momentum** and trend reversals.

The **MACD** is constructed from a combination of **moving averages** and is commonly used for **medium- to long-term** analysis.

MACD Indicator Signal Types

This indicator generates three primary signals in **technical analysis**:

- ⚡ Crossover between the **MACD Line** and the **Signal Line**
- ⚡ Crossing the **zero line**
- ⚡ Price **divergence**

Analysis Indicators like the MACD have greater reliability when they align with the **market trend** or are combined with other trading tools, such as **support and resistance levels** or **classic patterns**.



MACD Line Crossover on the EUR/USD Chart

RSI

The **RSI (Relative Strength Index)** is a **momentum-based oscillator** that measures the strength of market price movements, comparing upward and downward movements. It oscillates between 0 and 100 and is mostly used to identify **overbought and oversold** zones.

RSI Indicator Signal Types

Though often used to assess long-term trends, this **technical indicator** provides two main types of signals:

- ⚡ Detecting reversal points through identifying **overbought or oversold** zones
- ⚡ Identifying **divergence** between price and the RSI

The RSI alone is not sufficient for trade entries and is commonly combined with **price action**.



Divergence Detected by RSI on the GBP/USD Chart

Ichimoku

Ichimoku is a comprehensive Japanese analysis system that simultaneously offers insights on **trend**, **support/resistance**, **momentum**, and **entry/exit signals**. It consists of five key components:

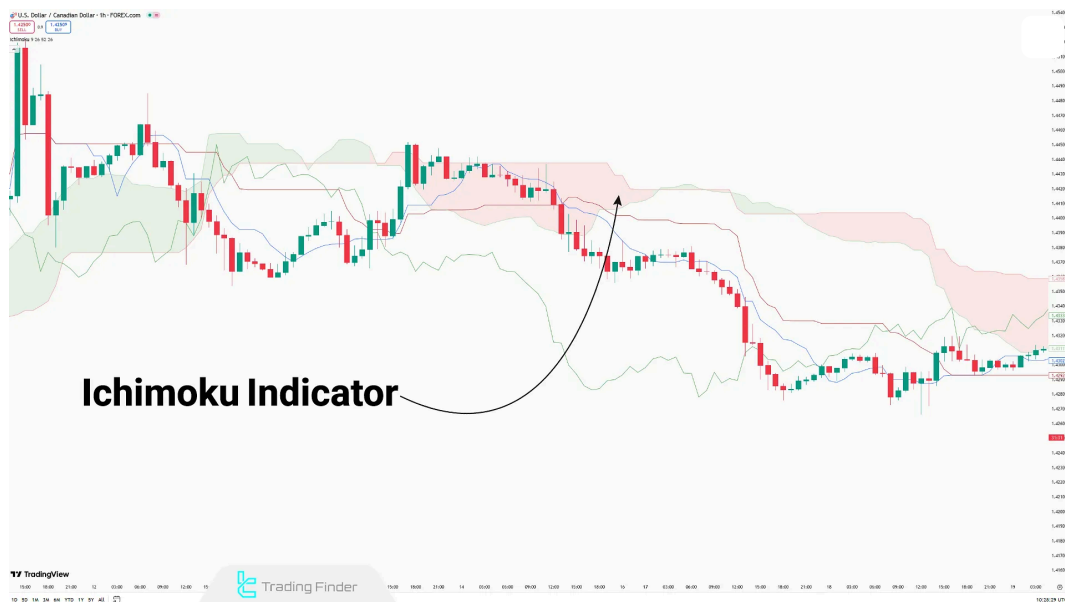
- ⚡ Tenkan-sen (Conversion Line)
- ⚡ Kijun-sen (Base Line)
- ⚡ Senkou Span A (Leading Span A)
- ⚡ Senkou Span B (Leading Span B)
- ⚡ Chikou Span (Lagging Span)

Ichimoku Indicator Signal Types

The Ichimoku indicator offers numerous entry signals. Here are three of the most commonly used ones in **technical analysis**:

- ⚡ Crossover between **Tenkan-sen** and **Kijun-sen**
- ⚡ Price crossing the **Kumo Cloud**
- ⚡ Chikou Span forming above or below the price

The Ichimoku is one of the few **technical analysis indicators** that does not necessarily need to be combined with other tools.



Ichimoku Indicator Displayed on USD/CAD Chart

Moving Average (MA)

The **Moving Average** is a **trend-following indicator** that smooths price fluctuations to identify the general market direction. It is used in **technical analysis** to detect **reversal points**, **trend structures**, and **support/resistance zones**.

There are two main types of Moving Averages:

- ⚡ **Simple Moving Average (SMA)**
- ⚡ **Exponential Moving Average (EMA)**

Moving Average Signal Types

This **Analysis Indicator** offers signals in three primary ways:

- ⚡ Price crossing the **Moving Average**
- ⚡ Two or more Moving Averages with different periods crossing each other
- ⚡ Slope direction of the Moving Average

The Moving Average is among the most adaptable indicators and can be easily integrated with various analytical strategies.



Price Direction Change Alongside the Crossover of Two Different Period MAs on the AUD/USD Chart

Bollinger Bands

The **Bollinger Bands** indicator is a **volatility-based indicator**, consisting of a **simple moving average (SMA)** and two upper and lower bands.

The distance between the bands and the moving average is calculated using historical market data.

The **Bollinger Band** is used to identify **overbought and oversold conditions, price squeezes, and key breakout levels**.

Bollinger Bands Signal Types

This **technical analysis indicator** provides trading signals in three ways:

- ⚡ Price touching or moving outside the bands
- ⚡ Bands expanding or contracting
- ⚡ Price moving within the band channel



Example of Rising Volatility and Market Volume as the Bands Widen on the USD/CHF Chart

Average True Range (ATR)

The **ATR** indicator is a **volatility-measuring tool** that calculates the **range of price movement** over a given period. ATR is used to identify the **strength of movements**, not their direction, and is mainly applied in **risk management** and filtering trade signals.

Since the ATR does not indicate the direction of price, it cannot provide direct buy or sell signals. Its role in **technical analysis** is to confirm signals from other methods by highlighting the intensity of price movement.



Measuring Volatility Intensity Using ATR on the USD/JPY Chart

SuperTrend

The **SuperTrend** is a **trend-following indicator** that combines **ATR** and **price** to mark entry and exit points directly on the chart. Unlike momentum indicators like RSI, the **SuperTrend** is plotted directly on price and is suitable for tracking trends across various timeframes.

SuperTrend Signal Types

The SuperTrend indicator generates trade signals in three ways:

- ⚡ **Color change** of the SuperTrend line
- ⚡ Change in the **position of the line** relative to price
- ⚡ **Widening gap** between the SuperTrend line and price



Price Direction Shift with SuperTrend Color Change

Price Direction Shift with SuperTrend Color Change on the S&P500 Chart

You May Like :



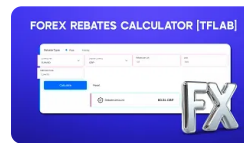
Live Forex Heat Map Tool [Highest Growth and Drop in 9...



Forex Pair Correlation Display Tool | +72 Currency Pairs...



Cryptocurrency Converter | Exchange Rate Calculator for 50...



Forex Rebate Calculator Tool - Forex Cashback Calculatio...

Pros and Cons of Technical Analysis Indicators

Indicators are not fixed tools; their performance depends on factors like market structure, strategy, and timeframe. Like all **technical analysis methods**, they come with unique strengths and weaknesses:

Pros	Cons
Simplifies Price Charts	Signal Lag
Standardizes Decision-Making	False Signals in Ranging Markets
Can be Integrated With Other Strategies	Dependent on Settings
Assists in Risk Management	May Cause False Confidence
Useful for Automated Trading Systems	May Ignore Market Context

Conclusion

To choose the right **technical analysis indicators**, you must consider factors such as **market structure**, **volatility**, and the **price phase**. Combining indicators in **technical analysis** enables diverse applications — for instance, using divergence signals from **RSI** along with **MACD crossovers** can help detect momentum shifts in slow-moving trends.

All indicators rely on **past market data**, which is often seen as a weakness when using indicators for future predictions.

FAQs

- When are trend indicators most accurate? ▼
When the market moves in a clear directional pattern with structured price movements.

- Which indicator works best in volatile markets? ▼
ATR and **Bollinger Bands** are particularly effective at tracking volatility and perform more reliably in volatile conditions.

- Can default indicator settings be trusted? ▼
No. Default settings are general suggestions and must be tailored based on asset type, timeframe, and market structure.

- Is RSI suitable for precise entry points? ▼
Not on its own. RSI is best used in combination with price action or classical chart patterns for confirmation.

- What's the difference between SMA and EMA? ▼

Table Of Content X

- Introduction to 7 Technical Analysis Indicators ▼
- Pros and Cons of Technical Analysis Indicators ▼
- Conclusion ▼
- technical tools like breakout levels ▼
- Why do indicators sometimes contradict the market trend? ▼

Such signals are often due to unsuitable timeframes or calculation delays.

Top Posts

- Does the use of too many indicators lead to overanalysis? ▼
Yes. Excessive use of similar indicators may reduce clarity and lead to conflicting analyses.




What is an ICT Order Block and How to Trade It?
Ram Nisha | Dec 23, 2024 7,273 Views



Break of Structure (BOS) on ICT
Eda Kaya ★ **5 From 5.0** (1) 7,198 Views

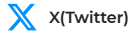
Rate this post



Turtle Soup Strategy from ICT Style
Arjun Mandal | Dec 23, 2024 7,163 Views

Our Social Media

0 Comment



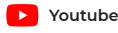
Telegram Write a comment



TradingView



Instagram



Tik Tok

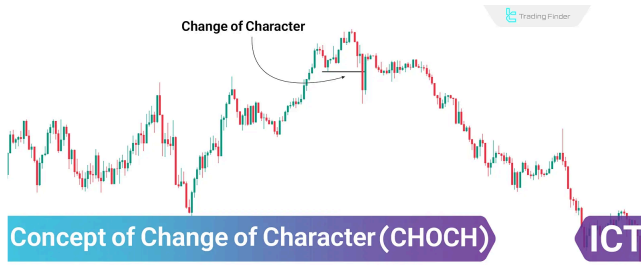
Latest Articles



What Is Simple Moving Average (SMA)? Dynamic Support and Resistance

Forex Education

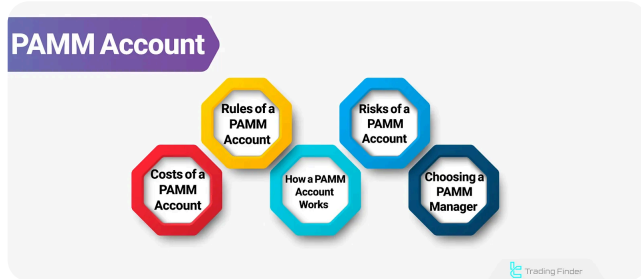
Arjun Mandal | Jun 8, 2025



CHOCH in ICT; Best Timeframe to Identify CHOCH in Trading

Forex Education

Nino Gogochashvili | Jun 7, 2025



What is a PAMM Account? Learn how to Choose the Right PAMM Account

Forex Education

Nino Gogochashvili | Jun 6, 2025



Complete training in financial markets such as "Forex," "Stock Market," and "Cryptocurrencies" only becomes comprehensive with tested trading tools and strategies. "Trading Finder," with its experience, aids traders and investors in gaining a correct understanding and deep learning. The training programs are designed based on tools for traders of all levels, from "beginner to advanced."



 English (EN) 

[About Us](#)

[Our Team](#)

[Advertisement](#)

[Indicators & Oscillators](#)

[Trading Tools](#)

[Contact Us](#)

[Jobs](#)

[Affiliates](#)

[Products](#)

[Trading Tools](#)

[Forex Methodology](#)

[Report a Bug](#)

[Our Scores](#)

[Financial Market Education](#)

Risk Disclosure:

Participating in financial markets involves high risk, which can result in the loss of part or all of your investment. There are no

[Show More](#) 

Disclaimer:

[TradingFinder.com] assumes no responsibility for any potential losses or damages. All decisions are the sole responsibility of

[Show More](#) 

Disclosure of revenues and advertisements:

The "TradingFinder" platform offers various services, some of which, like introductions, are free, while others, such as our

[Show More](#) 

Become a Master of AI Tools

Upgrade your career with in-demand AI skills

Coursiv

[Learn](#)

[Privacy Policy](#)

[Risk Warning](#)

[Cookies Policy](#)

[Copyright and Idea Submissions](#)

[Terms and Conditions Agreement](#)

© 2025 TradingFinder, Inc. All rights reserved.