

Become a Master of AI Tools

Don't get left behind — master AI now. The future belongs to those who learn AI

Coursiv

Learn More

TradingFinder > Education > Forex Education > Learning to Market Structure Shift (MSS) and ...

Learning to Market Structure Shift (MSS) and Change of Character (CHoCH) in ICT

Categories: Forex Education ICT (Inner Circle Trader) Education

Article Level: Intermediate

Writer: Ram Nisha | Reviewer: Eda Kaya | Fact checker: Arjun Mandal | Modified: May 17, 2025

Comments: 0

Views: 2,229

7 Min

In **ICT style**, **Market Structure Shift (MSS)** and **Change of Character (CHoCH)**, are two key concepts and powerful tools for identifying **trend changes**.

While these two concepts share similarities, they serve **different purposes** and roles in **market structure analysis**.



Comparison of Market Structure Shift (MSS) & Change Of Character (CHoCH)

What Is Market Structure Shift (MSS) and Its Application?

Market Structure Shift (MSS) refers to a **short-term change** in price direction accompanied by a break of significant **Swing Highs** or **Swing Lows**.

This event indicates a **temporary shift** in price movement and is sometimes considered an **early warning** of a potential long-term trend reversal.

What Are the Applications of MSS?



- ⚡ **Indicates Temporary Change:** It primarily signals a **short-term trend change** and does not always indicate a complete reversal of market direction
- ⚡ **Tool for Early Confirmation:** MSS is often used as an **initial signal** that might lead to a **Change of Character (CHoCH)**

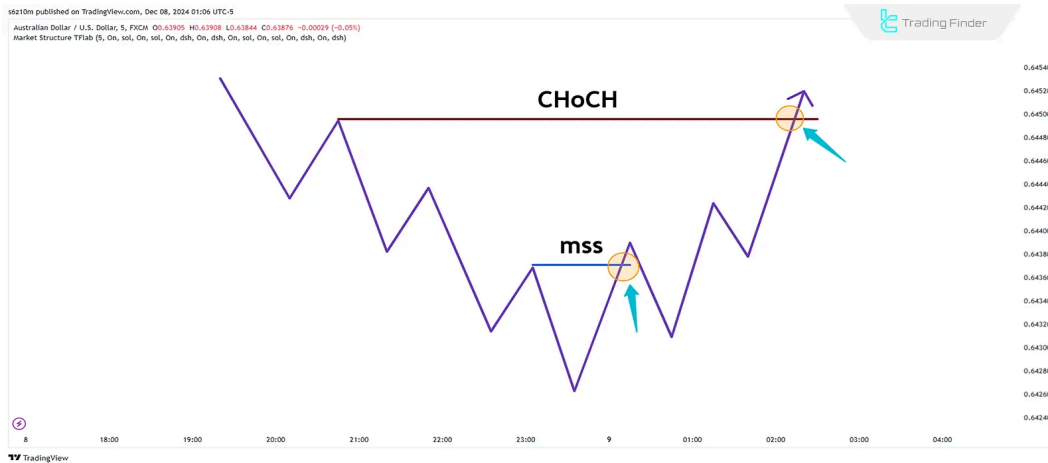
Types of MSS

- ⚡ **Bullish MSS:** A break of **Swing High** indicates that the market is **temporarily shifting** towards an **uptrend** or **buying pressure**
- ⚡ **Bearish MSS:** A break of **Swing Low** indicates that the market is **temporarily shifting** towards a **downtrend** or **selling pressure**

Why Is MSS Important?

MSS allows traders to identify **short-term market shifts** more quickly and act with greater precision when entering or exiting trades.

It is particularly valuable for **early confirmation** of market structure changes.



The formation and comparison of MSS and CHoCH, where market structure changes occur after a shift in character during a bullish phase.

Below is a real example of **market structure change** and **character shift** during a bullish market:



A practical example comparing MSS and CHoCH during a bullish market, highlighting the difference between these two concepts

What Is Change of Character (CHoCH) and Its Application?

Change of Character (CHoCH) refers to a **long-term change** in trend direction. **CHoCH** occurs when the current market structure is broken, and price direction **fully shifts** (e.g., from bullish to bearish or vice versa).

Applications of CHoCH

⚡ **Indicates Trend Reversal:** **CHoCH** signifies a break of a **key structural point** in the market, reflecting the **beginning of a new trend**.

Types of CHoCH

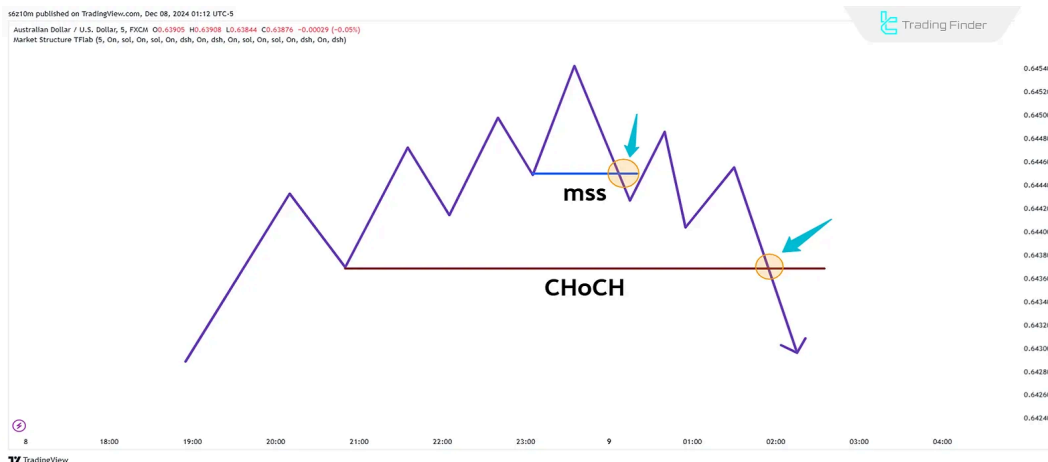
⚡ **Bearish CHoCH:** After an uptrend, **CHoCH** occurs when the price breaks below the previous **Higher Low (HL)** and forms a new **Lower Low (LL)**

⚡ **Bullish CHoCH:** After a downtrend, **CHoCH** occurs when the price breaks above the previous **Lower High (LH)** and forms a new **Higher High (HH)**

Why Is CHoCH Important?

CHoCH helps traders identify **major market shifts** and align their strategies with the **new trend**.

It is regarded as a **powerful signal** for trend reversals.



The formation and comparison of MSS and CHoCH, where market structure changes occur after a shift in character during a bearish phase

Below is a real example of **market structure change** and **character shift** during a bearish market:



A practical example comparing MSS and CHoCH during a bearish market, highlighting the difference between these two concepts.

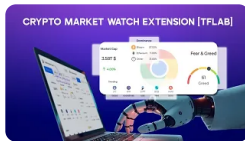
Note: To simplify **market structure (Market Structure)** identification, traders can use the **indicator** developed by the **[TFlab]** team:

- ⚡ **TradingView Version of the Market Structure Indicator**
- ⚡ **MetaTrader 4 Version of the Market Structure Indicator**
- ⚡ **MetaTrader 5 Version of the Market Structure Indicator**

You May Like :



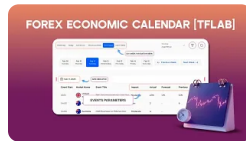
Cryptocurrency Converter | Exchange Rate Calculator for 50...



Crypto Market Watch Extension; Cryptocurrency Price...



Live Forex Heat Map Tool [Highest Growth and Drop in 9...



Forex Economic Calendar Tool [150+ Countries]

Comparison of MSS and CHoCH in a Table

The major differences between **Market Structure Shift (MSS)** and **Change of Character (CHoCH)** are summarized in the following table:

Parameters	MSS	CHoCH
Type of Change	Short-term change	Long-term change
Location of Occurrence	At Swing Points	At Key Structure Points

Potential Outcome	May lead to CHoCH	Indicates a full trend reversal
Importance in Analysis	Initial signal of temporary shifts	Strong signal of long-term changes
Primary Application	Identifies minor changes for trade entry	Detects major market direction shifts

How to Use MSS and CHoCH in Trading?

To use these two concepts in trading, follow the steps below:

1. Identify Market Structure Shifts (MSS):

- ⚡ Analyze the chart to locate **Swing Highs** and **Swing Lows**
- ⚡ If a **Swing High** or **Swing Low** is broken, **MSS** has occurred

2. Identify Change of Character (CHoCH):

- ⚡ Identify the **key structural points** in the market
- ⚡ If the price breaks these points and starts a **new trend**, **CHoCH** has occurred

3. Combine MSS and CHoCH:

- ⚡ Use **MSS** as an **initial signal**
- ⚡ If **MSS** is confirmed and structure fully breaks, consider it as a trade entry opportunity

Conclusion

The concepts of **Market Structure Shift (MSS)** and **Change of Character (CHoCH)** are powerful tools for identifying trend changes in the market.

MSS acts as an **early signal** for short-term shifts, while **CHoCH** indicates a **long-term trend reversal**.

Combining these two concepts can improve the precision of trading strategies by enhancing the analysis of market structure.

FAQs

Does MSS always lead to CHoCH? ▼

No. **MSS** may lead to **CHoCH**, but it can also indicate only a temporary trend change.

How can MSS be distinguished from CHoCH? ▼

MSS typically occurs at **Swing Points** and is **short-term**, whereas **CHoCH** occurs at **key structural points** and signifies **long-term changes**.

Can MSS and CHoCH be applied to all timeframes? ▼

Yes, both concepts can be applied to **all timeframes**, but they are more effective in higher timeframes.



5 From 5.0

(1)

Rate this post

Table Of Content



What Is Market Structure Shift (MSS) and Its Application?

What Is Change of Character (CHoCH) and Its Application?

Comparison of MSS and CHoCH in a Table

Conclusion

Top Posts
0 Comment

[Write a comment](#)



What is an ICT Order Block and How to Trade It?

Ram Nisha | Dec 23, 2024

7,221 Views



Break of Structure (BOS) on ICT

Eda Kaya | Dec 22, 2024

7,162 Views

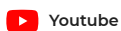
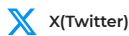


Turtle Soup Strategy from ICT Style

Arjun Mandal | Dec 23, 2024

7,116 Views

Our Social Media



Latest Articles



What Is a PAMM Account? Learn how to Choose the Right PAMM Account

Forex Education

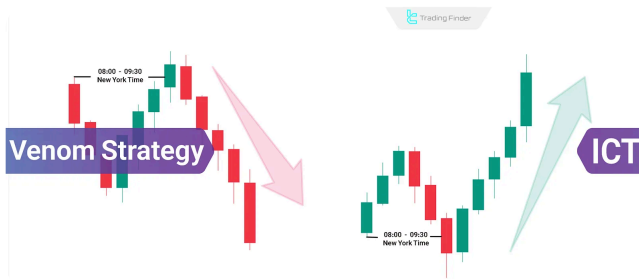
Nino Gogochashvili | Jun 6, 2025



Is Copy Trading Legal? Global Overview of Copy Trading Legal Status

Forex Education

Nino Gogochashvili | Jun 5, 2025



Venom Strategy in ICT Style (Venom); Intraday Trading on US Stock Indices

Forex Education

Nino Gogochashvili | Jun 4, 2025



Complete training in financial markets such as "Forex," "Stock Market," and "Cryptocurrencies" only becomes comprehensive with tested trading tools and strategies. "Trading Finder," with its experience, aids traders and investors in gaining a correct understanding and deep learning. The training programs are designed based on tools for traders of all levels, from "beginner to advanced."

English (EN) ▾

[About Us](#)

[Contact Us](#)

[Forex Methodology](#)

[Our Team](#)

[Jobs](#)

[Report a Bug](#)

[Advertisement](#)

[Affiliates](#)

[Our Scores](#)

[Indicators & Oscillators](#)

[Products](#)

[Financial Market Education](#)

[Trading Tools](#)

[Trading Tools](#)

Risk Disclosure:

Participating in financial markets involves high risk, which can result in the loss of part or all of your investment. There are no

[Show More](#) ▾

Disclaimer:

[TradingFinder.com] assumes no responsibility for any potential losses or damages. All decisions are the sole responsibility of

[Show More](#) ▾

Disclosure of revenues and advertisements:

The "TradingFinder" platform offers various services, some of which, like introductions, are free, while others, such as our

[Show More](#) ▾

CHATGPT Powered CV

Create your resume with the AI CV Builder, offering the best CV templates for job seekers!

[x](#) ⓘ

[Privacy Policy](#)

[Risk Warning](#)

[Cookies Policy](#)

[Copyright and Idea Submissions](#)

[Terms and Conditions Agreement](#)

