



Search

Filter

- > Tools
- > Drawings
- ▼ Indicators
  - > A-B
  - > C-D
  - > E-F
  - > G-L
  - > M-N
  - > O-Q
  - > R-S
  - ▼ T-U
    - TD Sequential
    - Time Series Forecast (TSF)
    - Triangular Moving Average (TMA)
    - Triple Exponential Average (TRIX)
    - Triple Exponential Moving Average (TEMA)
    - True Strength Index (TSI)
    - Typical Price (TP)
    - Ultimate Oscillator (UO)
- > V-Z
- Chart settings
- Keyboard navigation
- DXcharts API
- > DXcharts Android/iOS

Powered by DOCUMENT360

# Triangular Moving Average (TMA)

Dark

DXcharts powers [DXtrade](#), [DXfina](#), and [FinCharts](#).  
 Check our website to find more information about [DXcharts library](#).

**Triangular Moving Average (TMA)** is an indicator that is basically a double-smoothed [Simple Moving Average \(SMA\)](#) which means it applies extra weight to the line. TMA is considered more suitable to slow-moving markets because of its significant lags.

$$TMA = (SMA_1 + SMA_2 + SMA_3 + SMA_4 + \dots + SMA_n) / n$$

where:

- SMA – Simple Moving Average
- n – the period used in calculation



Triangular Moving Average

Table of contents

- [INPUTS](#)
- [PLOTS](#)
- [OVERLAYING](#)

## INPUTS

### Price

The following data sources are available for the price:

- **Open.** The Open Price of every bar for the specified period.
- **High.** The High Price of every bar for the specified period.
- **Low.** The Low Price of every bar for the specified period.
- **Close.** The Close Price of every bar for the specified period.
- **Median.** The Median Price of every bar for the specified period -  $(High + Low) / 2$ .
- **Typical.** The sum of High, Low, and Close prices divided by 3 for the specified period-  $(High + Low + Close) / 3$ .
- **OHLC average.** The arithmetical mean of High, Low, Open, and Close prices for the specified period -  $(Open + High + Low + Close) / 4$ .
- **Volume.** The Close Price of every bar + average volume of an asset for the specified period.

Input	Description
Length	The number of bars used to calculate the moving average
Displace	The number of bars the indicator to be shifted to

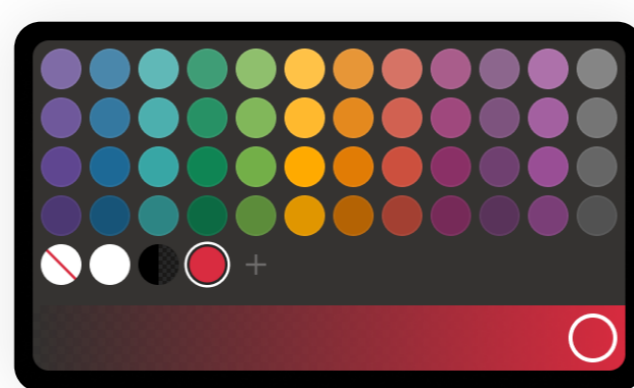
## PLOTS

The plot renders the data you are working with on the chart. You can show/hide a plot by clicking the corresponding item in the settings. Every plot has a set of basic settings that you can change: color, weight, and type.

Plot	Description
TMA	The Triangular Moving Average plot

### Color

Click the color rectangle under the plot's name to open the palette. Use the slider at the bottom to set the opacity of the color.



Palette

To create a custom color:

1. Click **+** to open the color picker
2. By using the slider at the bottom, adjust the main color
3. Then, set a shade for the main color on the palette

The custom-created colors are added to your palette. To remove a custom color, drag it out of the palette.

### Weight

Change the value (in px) to adjust the thickness of the plot.

### Type

The following plot types are available:

- **Linear.** The plot is displayed as a line.
- **Column.** The plot is displayed as a histogram.
- **Difference.** The plot is displayed as a line which represents the difference between High and Low prices of the bar.
- **Points.** The plot is displayed as points.
- **Text above candle.** The plot is displayed as the price labels above candles on the chart.
- **Text below candle.** The plot is displayed as the price labels below candles on the chart.
- **Triangle above candle.** The plot is displayed as triangles above candles on the chart.
- **Color candle.** The candles on candle-type charts are highlighted with specified colors.

## OVERLAYING

Check **Overlaying** to display the indicator on the chart. Otherwise, the indicator is shown in a study pane down below.

**Note:** To reset the settings, click **Restore to Default** next to the **SETTINGS: INDICATOR'S TITLE**

←

Previous  
Time Series Forecast (TSF)

Next  
Triple Exponential Average (TRIX)

→