

How to Trade with pure RTM!

To trade in the RTM style, you must first be able to locate the orders, and the only way to find them is through Tracking Order, where orders are reviewed within FLs. We perform this task from a high time frame and optimize all areas until the 1-minute time frame. Here we are looking for a suitable area to trade in the XAUUSD currency pair. Please pay attention to the following images:



We continue to track orders on the chart and move forward. All the areas identified on the charts are FlagLimits.

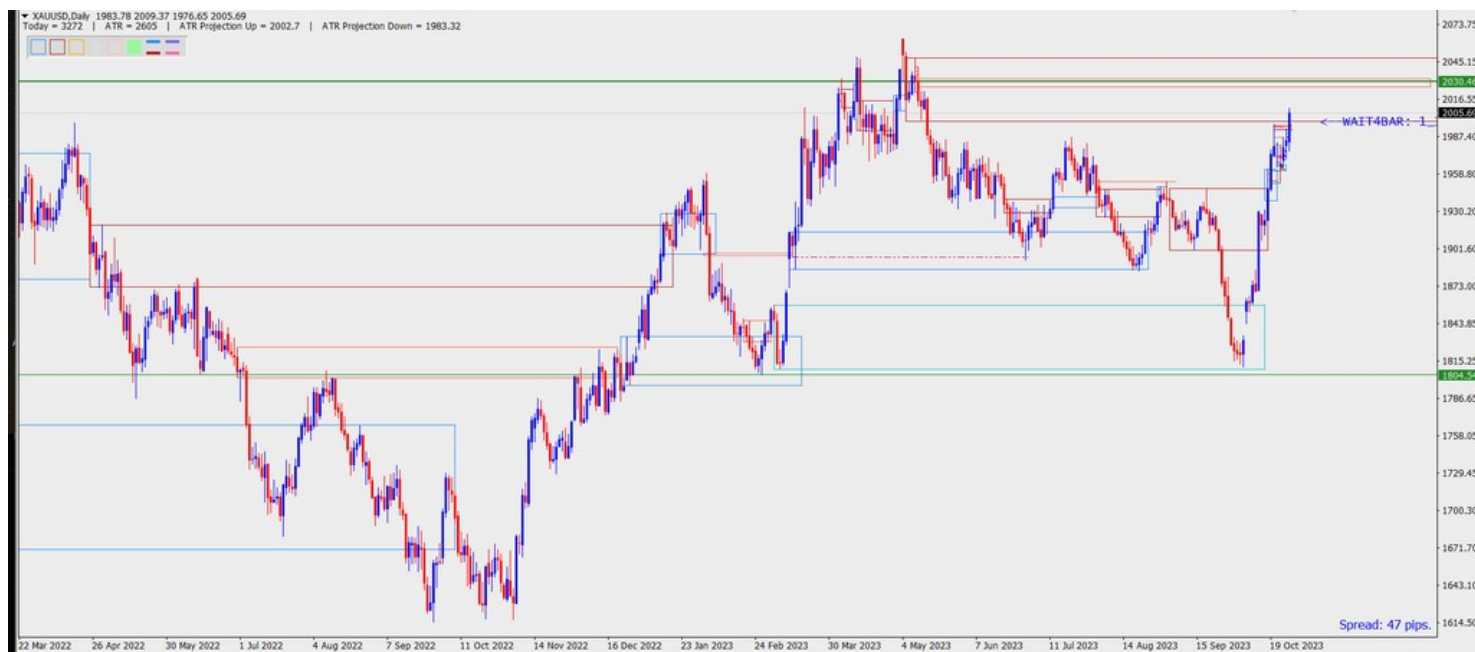




The MPL or Target location in this FL is marked with a red line, and when the price reaches there, it means the target has been touched. It is very important to understand whether MPL in an FL has been touched or remains fresh, or whether that FL has been engulfed or not. This helps us to predict the next price behavior.

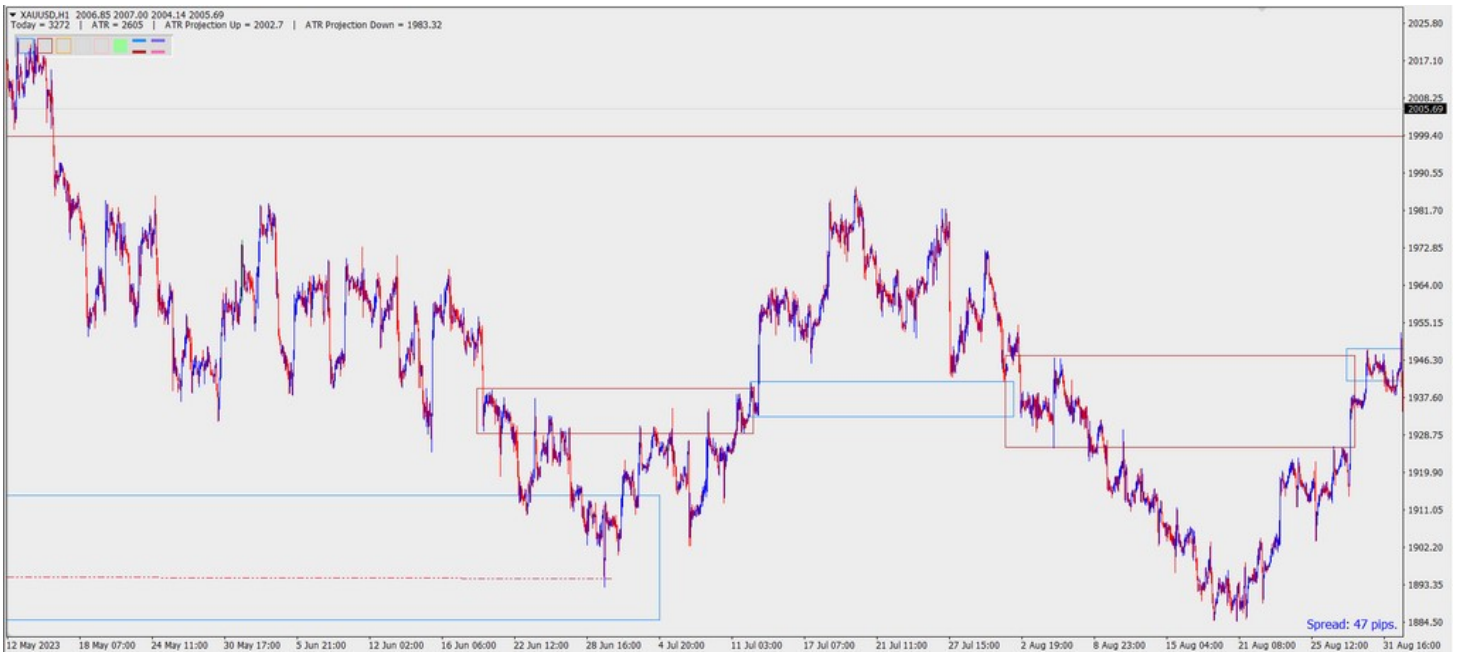


In the above and the next image, it is evident that the price has reached the target in green FL (green FL is Right Place) and the blue area is ORFL, where the price reaches its own target in ORFL after engulfing FL number one(1).



In the image below, order tracking has been done at the top of the chart, and we have also identified area X, which has lead the price to target at FL1, and we continue to tracking orders there to find the next area with an order that has not reacted to the price and has remained fresh.







Region A is a very important FL that can lead to a precise entry point and a good trade by tracking orders within it. As shown in the image, the price has shown a good reaction to MPL inside green FL, but we missed this trade and couldn't enter the market, so we have to wait for the next opportunity.



The price has engulfed FL B and returned to ORFL. With the help of Tracking Order, we have found the precise area to enter the market and set our limit order to enter the market.(D zone)





Due to the upcoming weekend holidays , I prefer to close my open trades before the market closes. My first and safest target is MPL within Z ORFL. However, we know that the primary target has not been touched yet and is at a higher scale, as indicated in the following images.



