

T
H
E
H
U
N
T
E
R
T
R
A
D
I
N
G
G
R
O
U
P



P
R
E
S
E
N
T
S



T
H
E
S
M
T
B
A
N
K
M
O
V
E





THE BANK MOVE SYSTEM

- Tuesday, Wednesday, Thursday
- New 3 Days High/Low Candle
- 4 Hours Consecutive Move
- One Candle Close Above/Below 3 Days Open/Close
- 1st Opposite Candle *MUST* Be An Engulf!
- Risk / Reward Set To 1:2 1:3.
- *Trail Behind Latest Trend Candle Wick Until Stopped*



T H E B A N K M O V E

- **Tuesday, Wednesday, Thursday**
- New 3 Days High/Low Candle
- 4 Hours Consecutive Move
- One Candle Close Above/Below 3 Days Open/Close
- 1st Opposite Candle MUST Be An Engulf!
- Risk / Reward Set To 1:2 1:3.
- *Trail Behind Latest Trend Candle Wick Until Stopped*



T H E B A N K M O V E

- Tuesday, Wednesday, Thursday
- **New 3 Days High/Low Candle**
- 4 Hours Consecutive Move
- One Candle Close Above/Below 3 Days Open/Close
- 1st Opposite Candle MUST Be An Engulf!
- Risk / Reward Set To 1:2 1:3.
- *Trail Behind Latest Trend Candle Wick Until Stopped*





T H E B A N K M O V E

- Tuesday, Wednesday, Thursday
- New 3 Days High/Low Candle
- **4 Hours Consecutive Move**
- One Candle Close Above/Below 3 Days Open/Close
- 1st Opposite Candle MUST Be An Engulf!
- Risk / Reward Set To 1:2 1:3.
- *Trail Behind Latest Trend Candle Wick Until Stopped*



T H E B A N K M O V E

- Tuesday, Wednesday, Thursday
- New 3 Days High/Low Candle
- 4 Hours Consecutive Move
- **One Candle Close Above/Below 3 Days Open/Close**
- 1st Opposite Candle MUST Be An Engulf!
- Risk / Reward Set To 1:2 1:3.
- *Trail Behind Latest Trend Candle Wick Until Stopped*





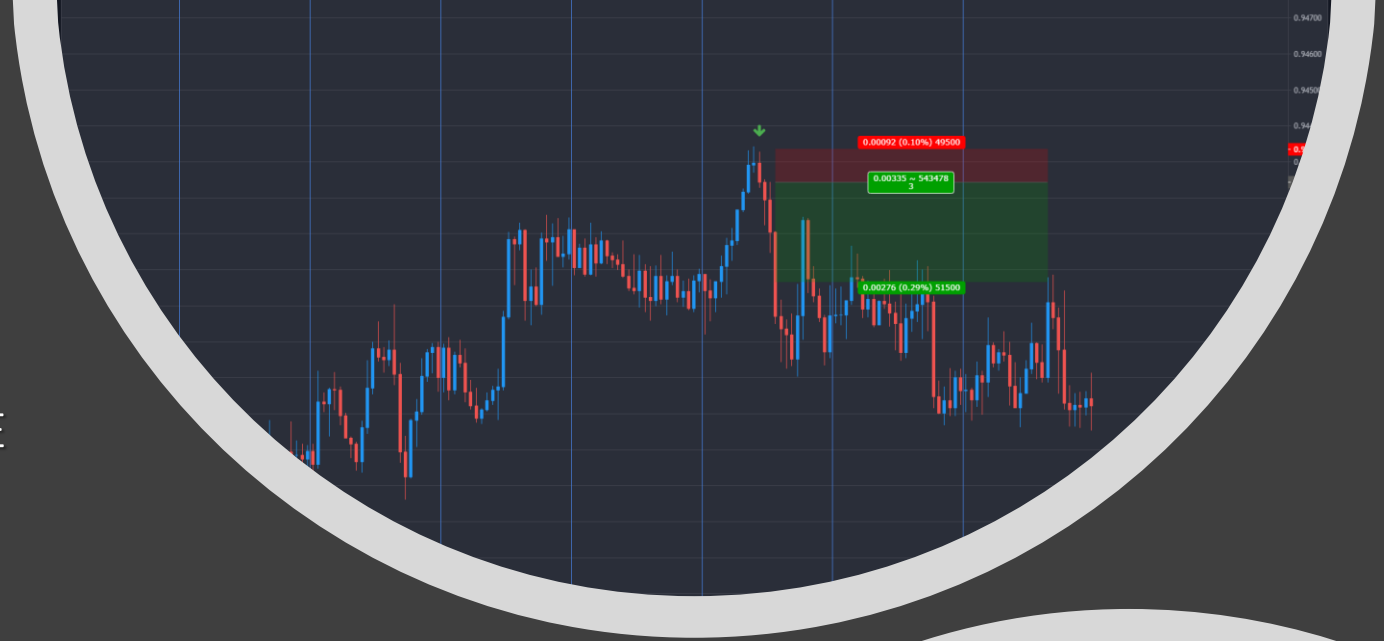
T H E B A N K M O V E

- Tuesday, Wednesday, Thursday
- New 3 Days High/Low Candle
- 4 Hours Consecutive Move
- One Candle Close Above/Below 3 Days Open/Close
- **1st Opposite Candle MUST Be An Engulf! (Enter On Close)**
- Risk / Reward Set To 1:2 1:3.
- *Trail Behind Latest Trend Candle Wick Until Stopped*



T H E B A N K M O V E

- Tuesday, Wednesday, Thursday
- New 3 Days High/Low Candle
- 4 Hours Consecutive Move
- One Candle Open/Close Above/Below 3 Days Open/Close
- 1st Opposite Candle MUST Be An Engulf!
- **Risk/Reward Set To 1:2 1:3**
- *Trail Behind Latest Trend Candle Wick Until Stopped*



T H E B A N K M O V E

- Tuesday, Wednesday, Thursday
- New 3 Days High/Low Candle
- 4 Hours Consecutive Move
- One Candle Open/Close Above/Below 3 Days Open/Close
- 1st Opposite Candle MUST Be An Engulf!
- Risk/Reward Set To 1:2 1:3
- **Trail Behind Latest Trend Candle Wick Until Stopped**

