

**MA10 USE HIGH & LOW**

**(EZREEN TRADING SYSTEM)**

Device MA10 line, if she;

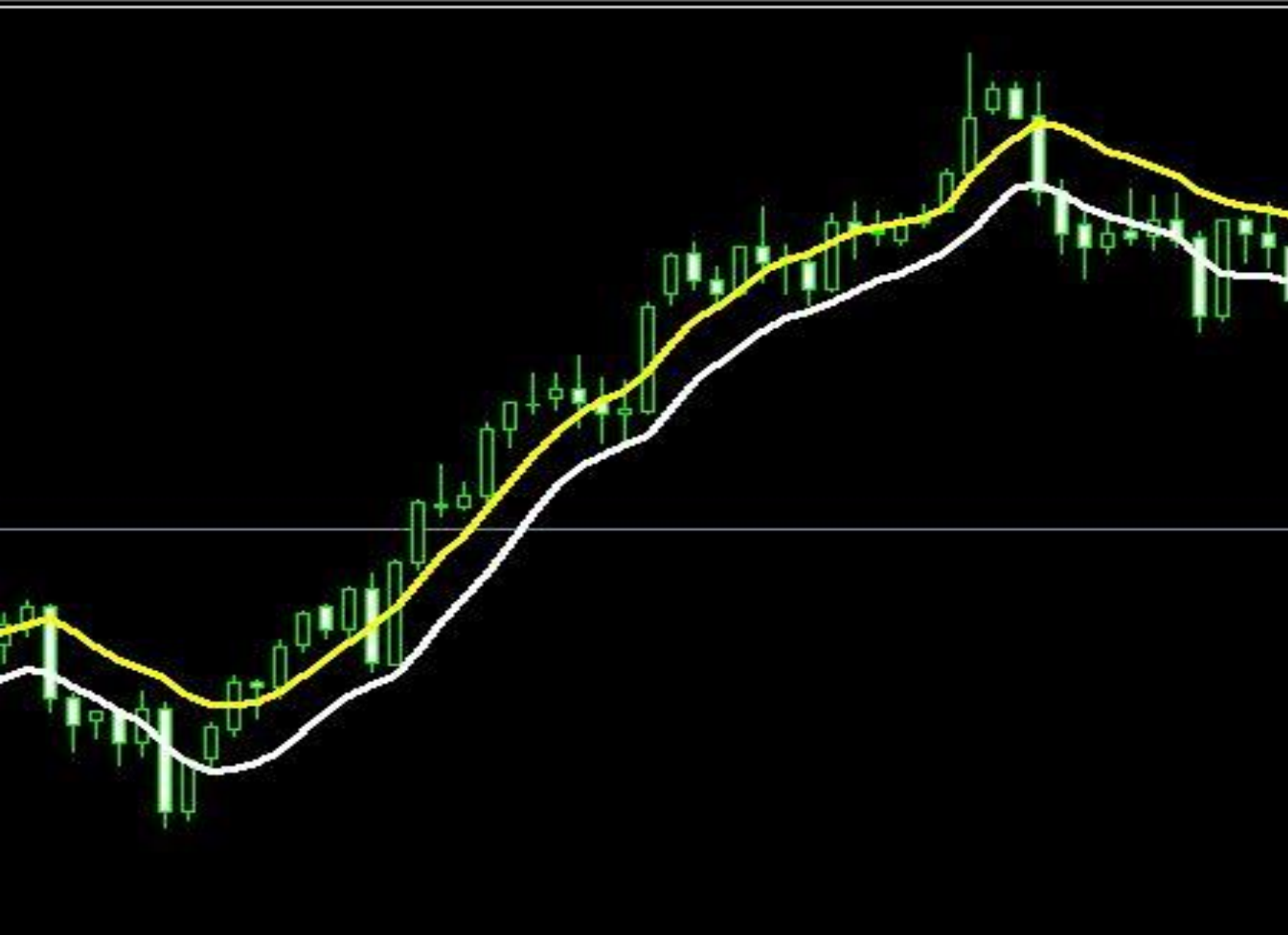
UT steep vertical =

horizontal = DT =

sideway

1) Place UT @ MA vertical = cs must be above the line of white MA  
or MA10 low.

The same time, the yellow line MA10 high, usually the body cs or  
cs shadow.



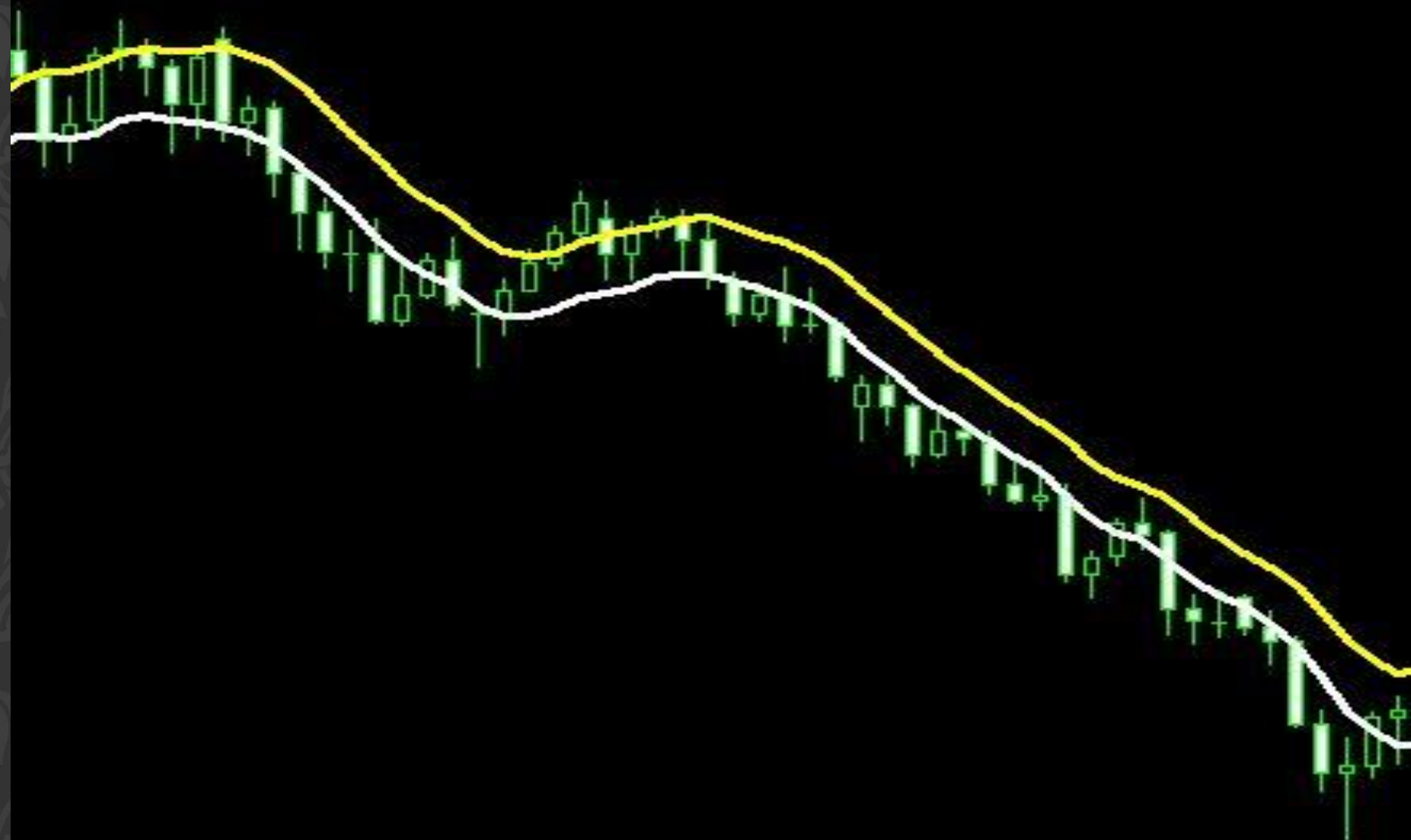
Why identify, record in head >>>

If cs is above the white line (MA10 low) the condition it is vertical = UPTREND. Down Trend impossible as long as no cs managed to break the white line and remember that cs reaction with a yellow line (MA10 high), where his line was. Watch enough of and remember, recorded in the head.

2) Time DT @ MA steep = cs must be below the MA line yellow or  
MA10 high

The same time, the white line MA10 low, usually the body cs or  
cs shadow.

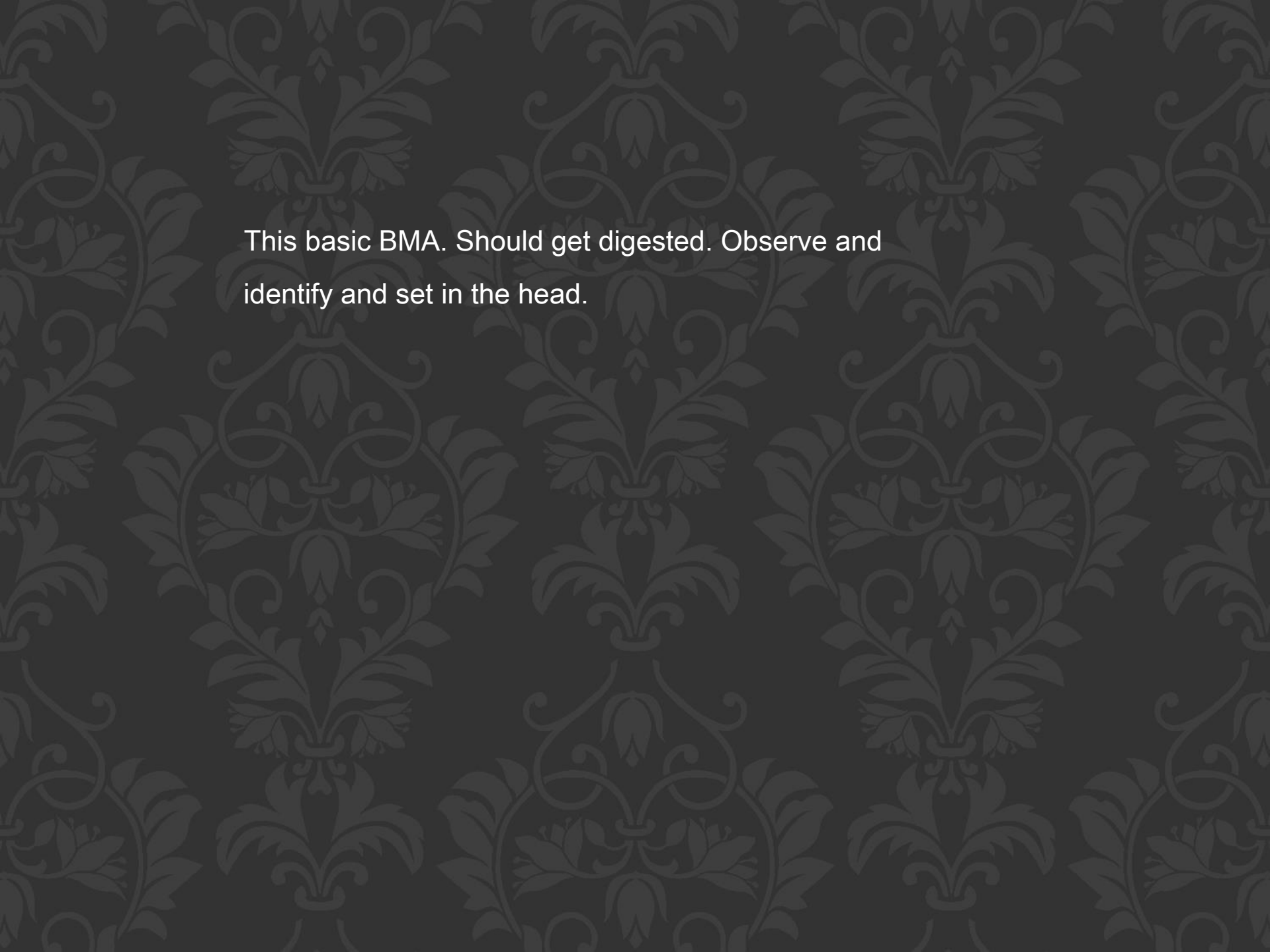
36.52 136.79



This was due to bear in mind also, recorded in the head >>> When cs is below the yellow line (MA10 high) which was decreased = it is a downtrend. Up Trend impossible as long as no cs managed to break the yellow line and remember the reaction cs with white line (MA10 low), where his line was. Watch enough of and remember, recorded in the head.



3) if cs is in the MA10 and MA10 low high = sideways.



This basic BMA. Should get digested. Observe and identify and set in the head.

Next step, make observations. Special observation has time he wants to change trend. From UT to DT.

Just look at the right line of yellow and white. Cs seat where he wants to change the current trend. Cs position change from the time he was UT to DT.

Cs Directions @ Gangster currently exist.



96.52 136.79

CS Arah @ Gangster



Directions Cs act as an early indication that the trend will change from UT to DT or otherwise.

Note -

Remember, as long as the condition trends UT and CS MA10 is above the white line (Low) vertical, then the chances of price fall is impossible. DT is only likely to occur when there are close to Cs cs

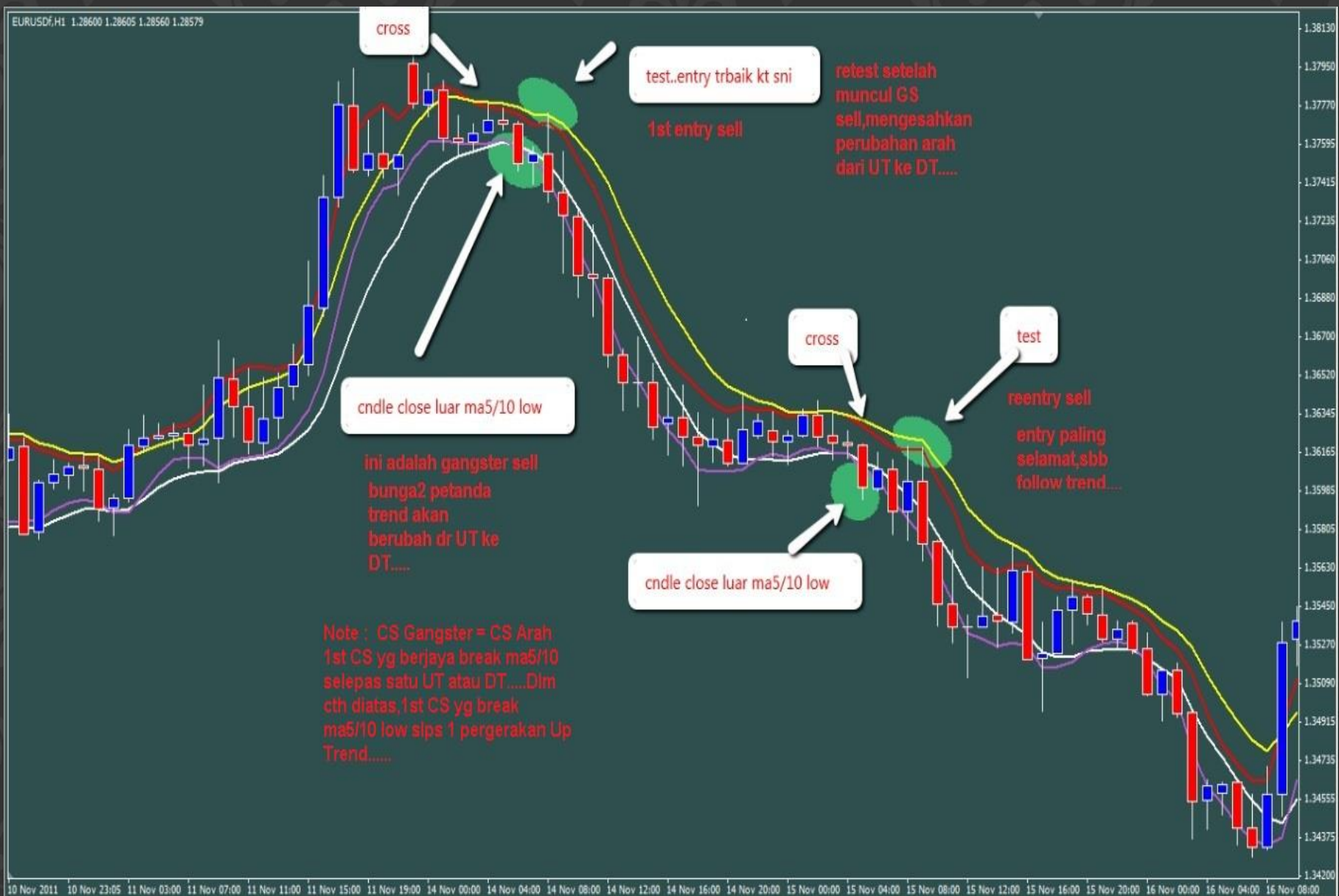
directions @ Gangster.



Point of entry after a CS Directions @ Gangster figure is shown  
in the following screenshot.



EURUSD,H1 1.28600 1.28605 1.28560 1.28579





1<sup>st</sup> entry made after the form CS Directions @ cs Gangster is once more back to retest line MA5 / 10 high (red & yellow) and failed the second line is MA.

Note - The above examples are related to CS Directions @ Gangster Sell after Previous applies a movement Up Trend.