

Quantina Intelligence Session Trader EA 2015

Manual Guide

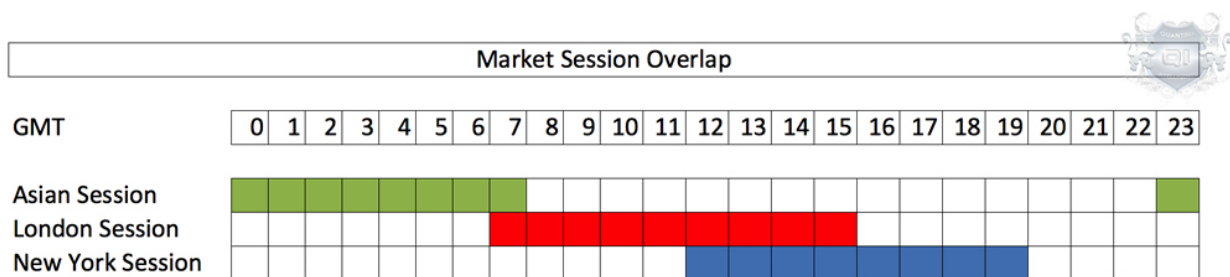
Universal Edition



Make Your Money, Work Around the Clock

Forex is a decentralized market that operates through financial centres around the world. Since these financial centres are located in different time zones, traders can enjoy a seamless 24-hour trading environment.

The eight largest financial centres in the world are the United Kingdom, United States, Japan, Singapore, Switzerland, Hong Kong, Australia, and France. While there are other financial centres scattered across the world, the trading times of these centres are lumped into three sessions known as the Asian (Tokyo), European (London), and North American (New York) sessions.



As its name implies, the London trading session is dominated by Forex trading activity occurring in the major financial center of London, England. The London trading session's dealing hours overlap substantially with those of the Asian Session (Tokyo) and New York trading sessions, although Sydney's and Wellington's trading hours do not overlap with the London Session.

One of the greatest features of the foreign exchange market is that it is open 24 hours a day. This allows investors from around the world to trade during normal business hours, after work or even in the middle of the night. However, not all times are created equal. Although there is always a market for this most liquid of asset classes, there are times when price action is consistently volatile and periods when it is muted. What's more, different currency pairs exhibit varying activity over certain times of the trading day due to the general demographic of those market participants who are online at the time. In this article, we will cover the major trading sessions, explore what kind of market activity can be expected over the different periods, and show how this knowledge can be adapted into a trading plan.



The most liquid currency pair traded during the London trading session is EUR/USD, which often displays considerable volatility during that time frame. Other especially active currency pairs traded during this session include: GBP/USD, USD/CHF, EUR/GBP, EUR/CHF and GBP/CHF.

Asian Session (Tokyo)

When liquidity is restored to the forex (FX) market after the weekend passes; the Asian markets are the first to see action. Activity from this part of the world is represented by the Tokyo capital markets, which are live from midnight to 6 a.m. Greenwich Mean Time (GMT). There are many other countries that are present during this time period including China, New Zealand, Australia as well as Russia. Considering how scattered these markets are, it makes sense that the beginning and end of the Asian session are stretched beyond the standard Tokyo hours. Allowing for these different markets' activity, Asian hours are often considered to run between 11 p.m. and 8 a.m. GMT.

European Session (London)

Later in the trading day, just before the Asian trading hours close, the European trading session takes over, keeping the currency market active. This FX time zone is very dense and includes a number of major markets.

However, London ultimately takes the honors in defining the parameters for the European session. Official business hours in London run between 7:30 am and 3:30 pm GMT. Once again, this trading period is expanded due to other capital markets (including Germany and France) before the official open in the U.K.; while the end of the session is pushed back as volatility holds until the London fix after the close. Therefore, European hours are typically seen as running from 7 am to 4 pm GMT.

North American Session (New York)

By the time the North American session is online, the Asian markets have already been closed for hours, but the day is only halfway through for European traders. The Western session is dominated by activity in the US, with a few contributions from Canada, Mexico and other countries in South America. As such, it comes as little surprise that activity in New York marks the high in volatility and participation for the session.

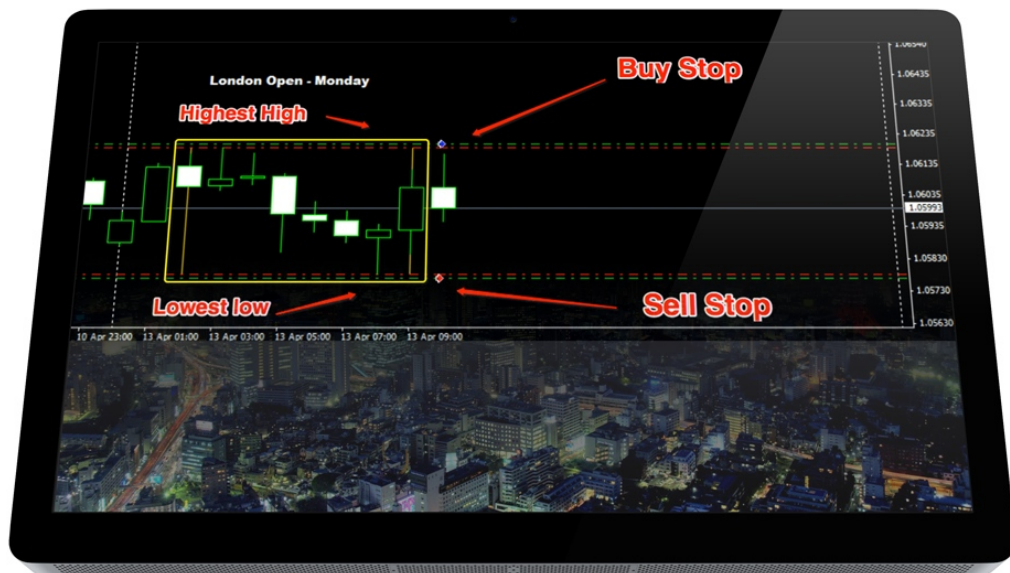
Screenshot: EUR/USD H1 London Open at 08:00 GMT (London Time)



Basic of the Session Trading Strategy:

A, London Open Forex Strategy (Early Bird):

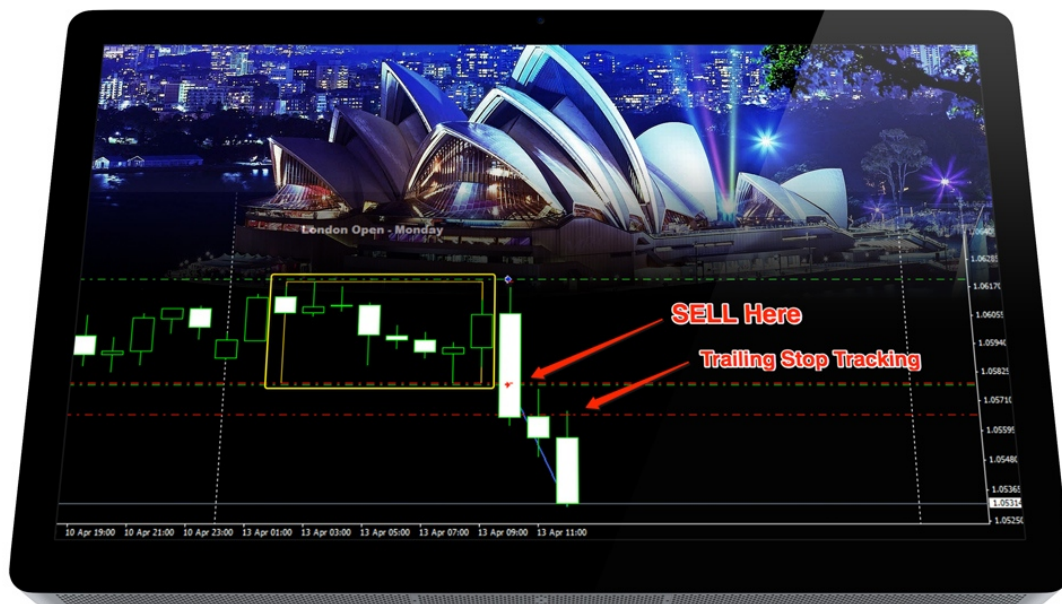
1. Determine the highest high and lowest low between 02:00 - 08:00 a.m. (GMT) London Time
2. Set Pending Orders (Buy Stop above of highest high price, and Sell Stop under the lowest low price)
3. Set Stop Loss to lowest low for Buy order and Set StopLoss to highest high for Sell order.
4. Use Break Even Method for save your account.
5. Use Trailing Stop instead of TakeProfit. Let your profit Run. Earn Money.



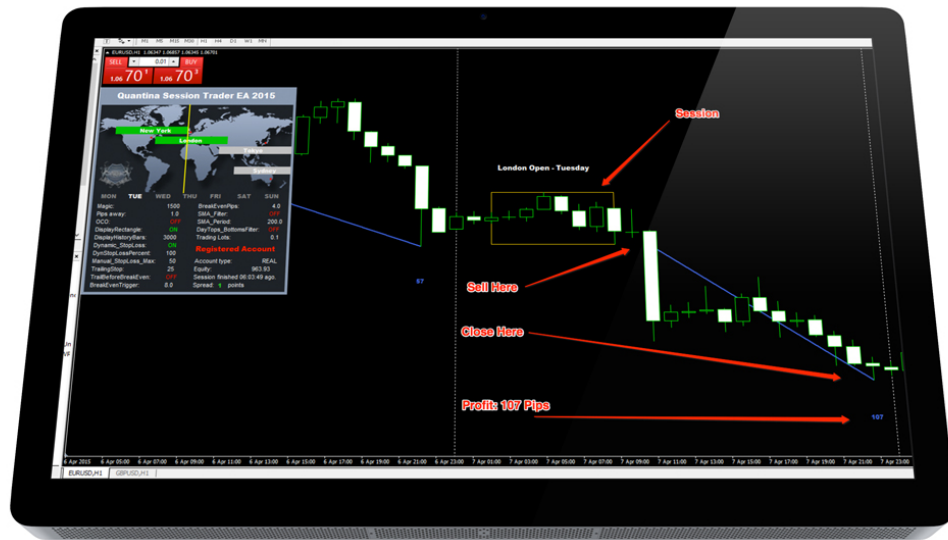
EUR/USD H1 Buy Stop Order top of the Highest High and Sell Stop Order bottom of the session.



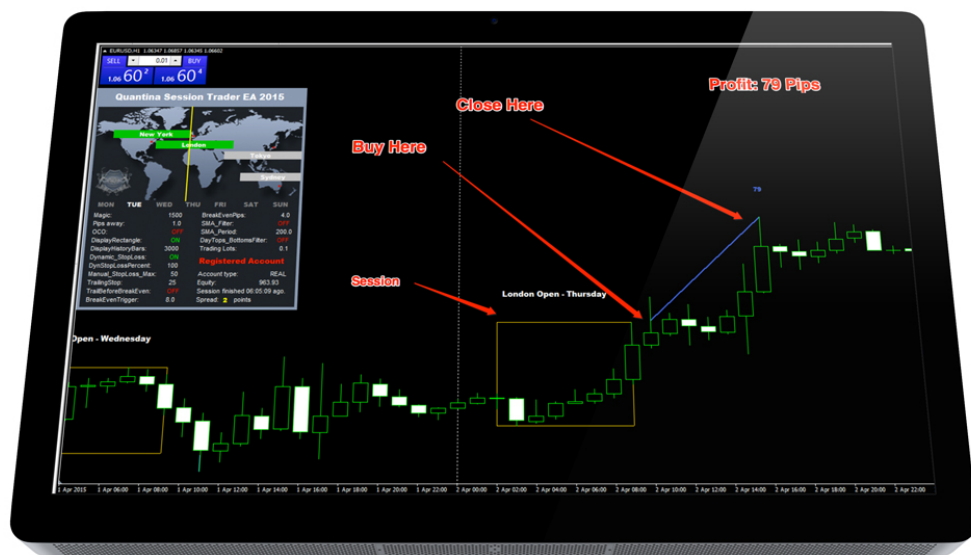
Screenshot: Sell Order has been executed, BreakEven Triggered immediately. Trailing Stop started to tracking.



Due to its location closer to the International Date Line, London operates in a time zone where clocks are usually set five hours later than clocks in New York's time zone. This time difference sometimes varies by an hour depending on when Daylight's Savings time starts and finishes in each financial center.



Screenshot: EUR/USD H1 London Open Trade. Sell order has been executed.

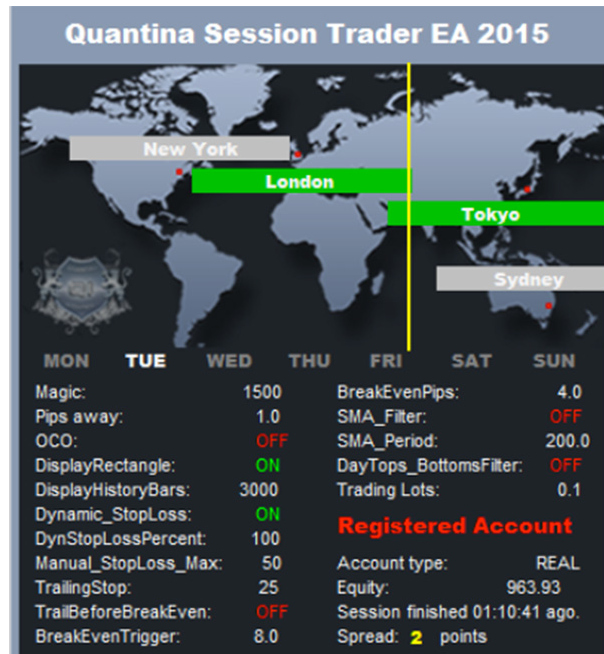


Screenshot: EUR/USD H1 Trading Every DayMaximum Profit Probability Marked by EA

Friday Profit: \$187
Monday Profit: \$46
Tuesday Profit: \$117
Wednesday: \$154

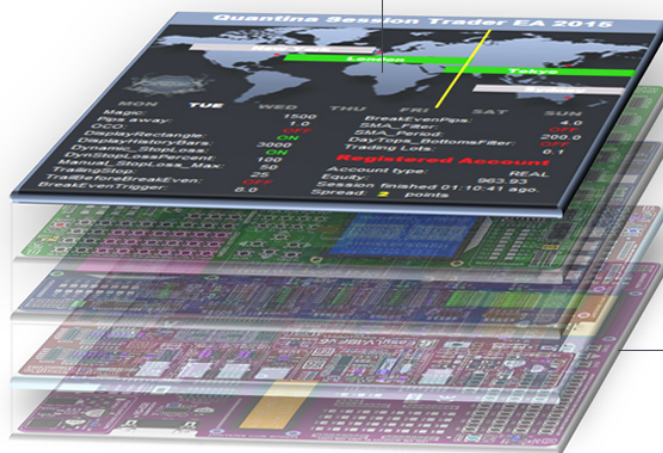


Features



Variable	Value
MagicNumber	1500
TradingLots	0.1
AdvancedMoneyManager	false
RiskPercent	2.0
SessionName1	London Opening
SessionStart1	02:00
SessionEnd1	10:00
CancelPendingOrders1	19:00
BoxColor	Gold
PipsAway	1.0
OCO	false
DisplayRectangle	true
DisplayRectangleHistoryBars	3000
Dynamic_StopLoss	true
Dynamic_StopLoss_Percent	100.0
Manual_StopLoss_Max	50.0
TrailingStop	25.0
TrailBeforeBreakEven	false
BreakEvenTrigger	8.0
BreakEvenPips	4.0
TradeComment	Quantina Session Trader
SMA_Filter	false
SMA_Period	200
DisableSell	false
DisableBuy	false
PreviousDayTops_BottomsFilter	false
ReEnterIfLoss	true
DisableTradesOnSunday	false
DisableTradesOnMonday	false
DisableTradesOnTuesday	false
DisableTradesOnWednesday	false
DisableTradesOnThursday	false
DisableTradesOnFriday	false
DisableTradesOnSaturday	false
MaxSizeOfSession	50.0
ShowLineFromEntry	true
ColorOfLine	RoyalBlue

REDESIGNED SMART PANEL



**BUILT - IN
MOVING AVERAGE FILTERS**

**BUILT - IN
BREAK EVEN METHOD**

**INTELLIGENCE
DYNAMIC STOP-LOSS**

**ADVANCED
TRAILING STOP**

Magic Number: 1500 This is a unique ID for each running EA. Please use different numbers on every active EA especially on same currency pair. Also you have to use different Magic number if you are using more than one Quantina Session Trader EA 2015 on same currency pair
Trading Lot Size: Trading Lot size. Default is 0.1 (1 standard lot = 100.000)
Advanced Money Manager: If it's true, the EA will calculate a recommended trading lot per trade. Dynamic trading lots.
Risk Percent: Value in percent. Default is 2. (2%). For advanced users: Formula is: lot = (Equity*percent)/abs(entry-sl)
Session Name: Name of your unique session. It will appear on the top of your session (rectangle) on chart.
Session Start: Beginning of your session what the EA will tracking for the top and bottom line. Determining the highest high and lowest low lines. Time is in 24 hours format (hh:mm) and using your Broker server time (Market Watch)
Session End: End of the tracking period. The EA will set the pending orders and of the session. Time is in 24 hours format (hh:mm) and using your Broker server time (Market Watch)
Cancel Pending Orders: The EA will cancel all pending orders that were not executed. Time is in 24 hours format (hh:mm) and using your Broker server time (Market Watch).
Box Colour: Rectangle colour around the session for better view.
PipsAway: Value In pips. The EA will set the pending orders above and below of the session box with pipsaway distance. Default is 1 pip.
OCO: One Cancel Other. The EA will cancel the other pending orders if one of them has been executed.
 Display Rectangle: Draw rectangle on the chart around the session.
Display Rectangle History Bars: Session Trader EA will show your settings results in the previous period. Reduce this value if you have less memory than 2GB in your PC/VPS
DynamicStopLoss: Very unique method. The EA will set your StopLoss in same value then session high. If the DynamicStopLossPercent was 100%.
DynamicStopLossPercent: Stop Loss value will be expand or reduce by this value. If you set 50, The EA will set the StoLoss value 50% of Session high.
Manual Stop Loss MAX: Manual StopLoss can overlap the Dynamic StopLoss. Let's say your Session High (Difference between highest high and lowest low in session period) was 50 pips. If you set your DynamicStopLoss = true and 'Percent is 100%, the EA will set the StopLoss = 50 pips.

However if your ManualStopLossMax = 20, the EA will use the smallest one.
Trailing Stop: Value in pips. Min = 1 Max = unlimited. More information of TrailingStop on Investopedia's website. Trailing Stop method can track your opened trade and let your profit run.
Trail Before Break Even: The EA will start the trailing before the market price reached the breakeven trigger value. Default is false.
BreakEvenTrigger: Distance from entry price in pips. The EA will move the SL to positive area to save your account.
BreakEvenPips: StopLoss will be locked. Distance from entry price in favour if the market price reached the BreakEvenTrigger value.
Trade Comment: Unique information for trading history. "Quantina Session Trader" or "Quantina Session Settings A"
SMA Filter: Simple Moving Average Filter. The EA will open Buy trade if the Market Price is above than SMA line and for Sell is vice versa. This is an extra advantage for long term trend traders. Also, you can reduce your risk.
SMA Period: Simple Moving Average period. Working if the SMA Filter is true.
Disable Sell: If it's true, the EA will not open trade for short (sell).
Disable Buy: If it's true, the EA will not open trade for long (buy).
Previous Day Tops Bottoms Filter: If it's true, the EA will trade if the actual market price (after the session end) is out of the previous day highest high and lowest low. It can give you an extra confirmation.
Re_Enter If Loss: If it was a negative (loss) trade EA will re-send the pending orders. It can help you make profit if the market price was just temporary volatile. In this case you do not miss the market movements. Also, it can be more risky.
Disable Trades on "XXXXX" Days You can turn OFF the trades on special days, such as on every Friday or every Monday.
Max Size of Session: The EA can measure the session high (distance between the highest high and lowest low in session time). If session high is bigger than MaxSizeOfSession, the EA will not open trade.
Show Line from Entry: There is an extended feature to see what would be the maximum profit in pips from entry point. It's working on the previos days as well. It can help you to create better settings.
Color of Line: From entry point to the maximum profit.

How to Install:

Step 1: Download the new version of Quantina Session Trader EA 2015 . 1 file only. (no DLLs, no Indicators needed)

Step 2: Go to your MetaTrader4 Terminal \ File \ Open Data Folder

Step 3: Paste your file into the MQL4 \ experts -folder

Step 4: Restart your MetaTrader 4

Step 5: Find your new Quantina Session Trader EA 2015 under your Navigator \ Expert Advisors

Step 6: Open a currency chart with any timeframe. (Default is EUR/USD H1)

Step 7: Attach your EA to the chart.

Video link to download and install instructions:
<https://www.youtube.com/watch?v=DUtHw48X2U0>

3. How do I set my SessionStart and Session End if my broker server time is +3h

Default settings is in London Time. Add 3 hours to the Start Time: 02:00 + 3h = 05:00, End Time: 08:00 + 3h = 11:00.

4. Is that possible to trade on New York Session opening as well?

Yes. Please adjust the time as your broker server time. Every setting in this EA are flexible.

5. Is this EA broker account sensitive? Do I have to change my broker?

No, it is not. EA can work on every known account type and with every forex broker. However, we always have Recommended Broker for all our product. This EA is tested on Pepperstone ECN Razor account.

6. Can I use Quantina Session Trader EA on EUR/USD, GBP/USD, USD/CAD, USD/JPY, GBP/JPY at the same time on same account?

Yes, you can. However, please check your settings and strategy for each currency pair.

7. Can I use several different settings and strategy on EUR/USD at the same time? Yes you can run unlimited* number of Quantina Session Trader EA 2015 on same currency pair, but please do not forget to set different unique ID (Magic Number).

8. Do I need extended license if I want to run it on VPS ?

No, you do not. 1 Live account is enough to run this EA on your PC / VPS. Quantina Session Trader EA 2015 is compatible with every known (VPS) server.

9. What Indicator do I have to install If I want to get a same view (rectangle, blue line, panel, maximum profit probability) as in your description?

Quantina Session Trader EA 2015 has built-in every necessary files in 1 single .ex4 file. There is no need any other indicator or .dll files.

10. Do I need to trade manually?

No, you do not need to. Quantina Session Forex Trader EA 2015 will open trades, managing that with trade protector* and handle the opened trades automatically. Plug and Earn system. Easy Installation.

Also, if you need any help with installation please contact our support team 24/5. on support@quantina-intelligence.com

Instant Download

Download your product instantly, Registration is automated. You do not need license key or registered email address. Installation takes less than a minute.

Lifetime Support

Quantina Intelligence limited is running a New Forum site with video instructions to instant help. Also, we can answer all support emails usually in 24-72 hours. *"We truly differentiate ourselves and deserve the trust our key stakeholders place in us..."*

Lifetime Upgrade

We are continuously developing our products. Quantina Session Trader EA 2015 includes the free upgrade as well.

One time Payment

No monthly fee. Displayed price are final price, there is no any hidden fees. TAX and VAT are also included.

PayPal

Pay by PayPal confidence. PayPal account not requires.(Visa, Visa Debit, Visa Direct, Master, American Express cards accepted by PayPal)



Quantina Intelligence Limited
London, United Kingdom



HIGH RISK WARNING:

Foreign exchange trading carries a high level of risk that may not be suitable for all investors. Leverage creates additional risk and loss exposure. Before you decide to trade foreign exchange, carefully consider your investment objectives, experience level, and risk tolerance. You could lose some or all of your initial investment; do not invest money that you cannot afford to lose. Educate yourself on the risks associated with foreign exchange trading, and seek advice from an independent financial or tax advisor if you have any questions.