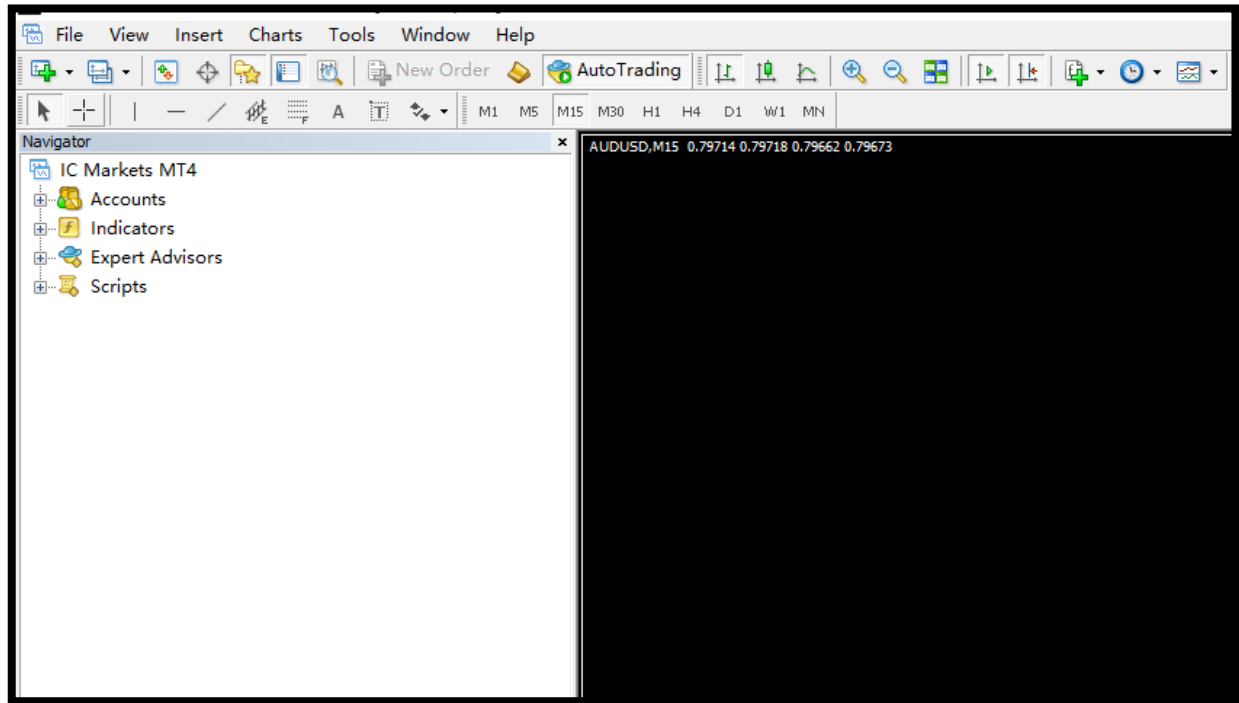


SUPER COPIER SYSTEM EA – INSTALLATION STEP DOCS

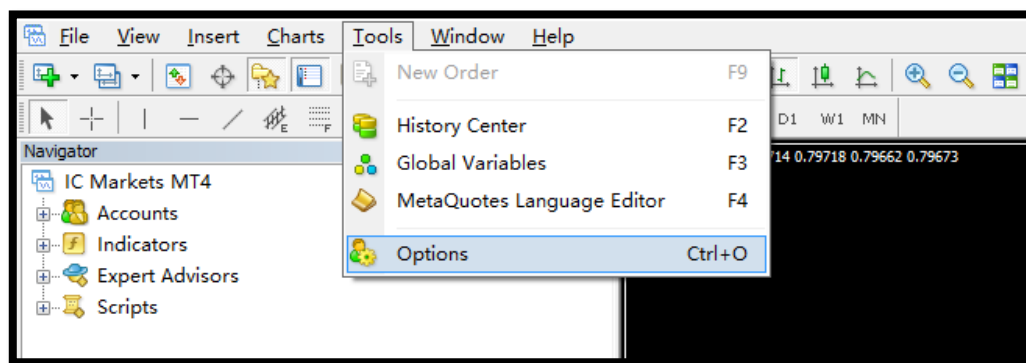
Complete the EA installation within 2 minutes by simply following the few steps.

Step1: Open MT4 Terminal



Step2: Enable Automated Trading and Add URL

Click Tools -> Options

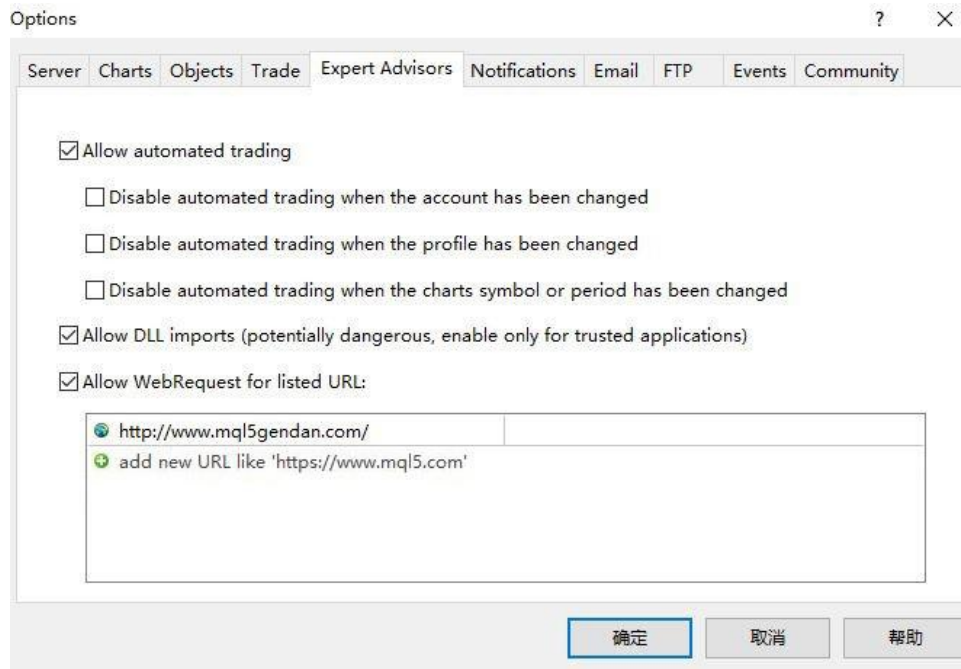


- Select Expert Advisors
- Tick the following three options
- Add the following URL to enable automated trading and authorize EA the access to retrieve the info
 - Click add new URL and then add the link.

<http://www.mql5gendan.com/>

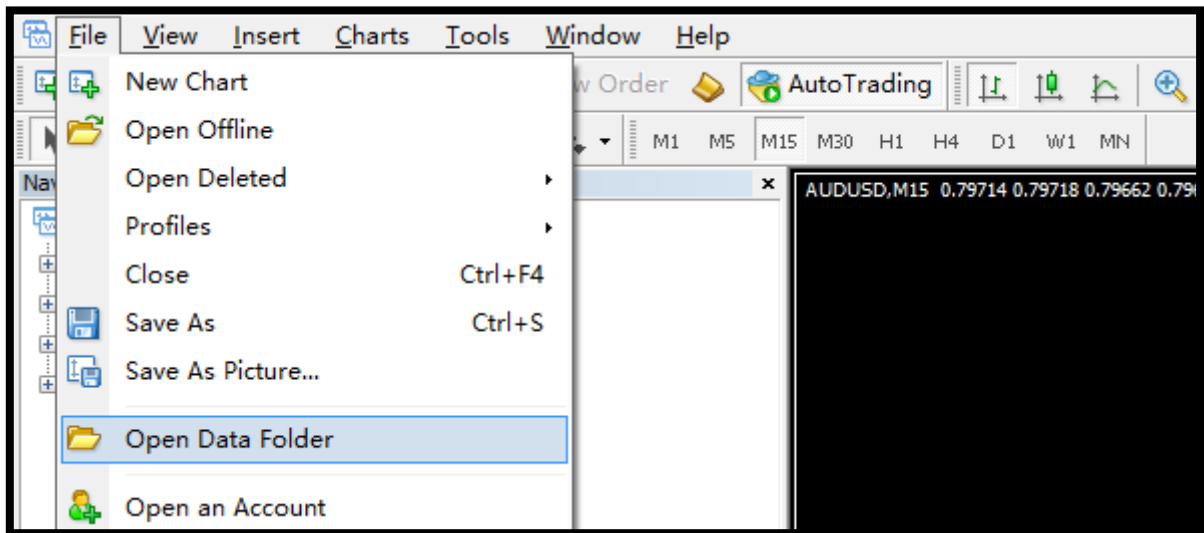
- Input http, not https

- It's suggested to copy and paste the link directly instead of keying in manually word by word

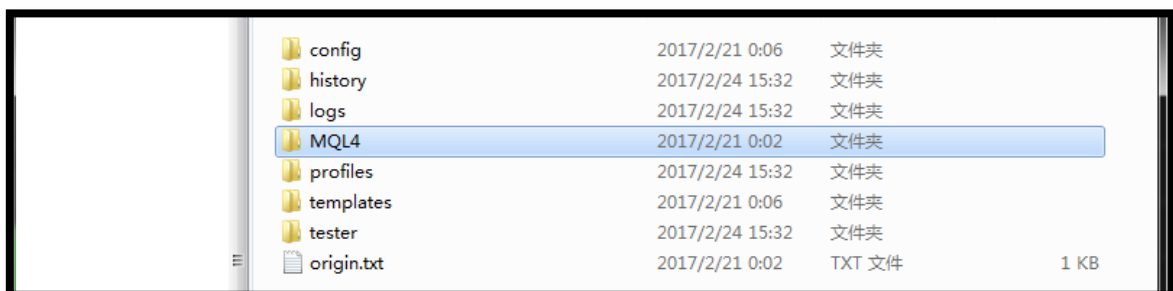


Step3: Put EA (ex4 file) into MQL4/Experts folder

Click Files -> Open Data Folder



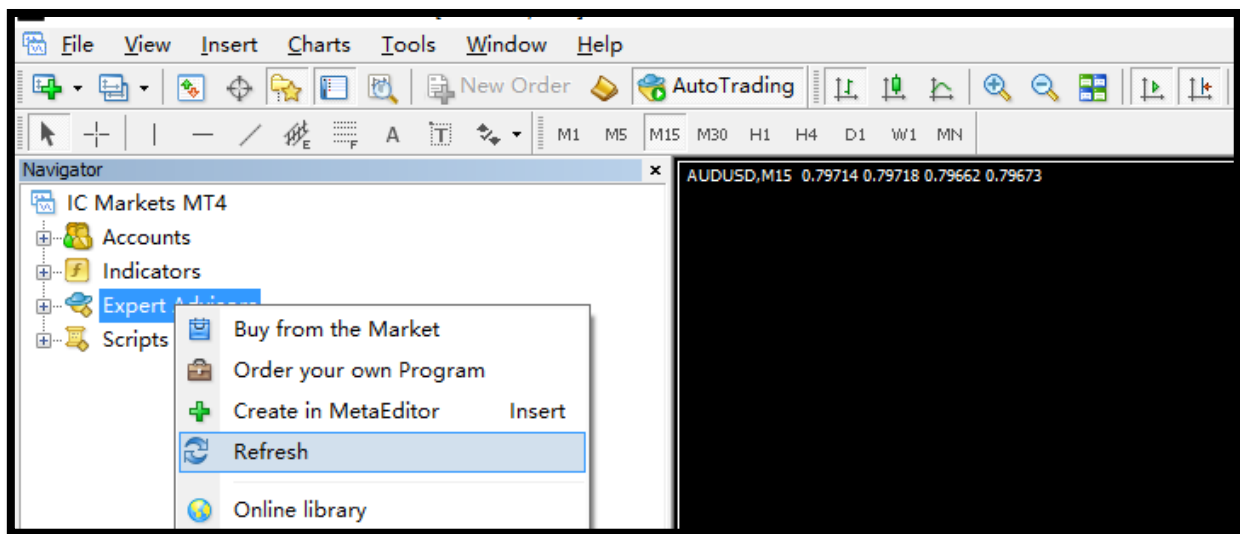
Navigate to Expert folder under MQL4 and paste the EA (ex4 file) into the folder



Experts	2017/2/21 0:05	文件夹
Files	2017/2/21 0:02	文件夹
Images	2017/2/21 0:02	文件夹
Include	2017/2/21 0:02	文件夹
Indicators	2017/2/21 0:02	文件夹
Libraries	2017/2/21 0:02	文件夹
Logs	2017/2/24 15:32	文件夹
Presets	2017/2/21 0:05	文件夹
Projects	2017/2/21 0:05	文件夹
Scripts	2017/2/21 0:02	文件夹

Step4: Run EA

Right click on Expert Advisors and click refresh, then the Super Copier System EA appears.



Drag and drop the EA onto any chart (**any chart = chart of any pair and any timeframe**). Noted that the EA should be loaded onto **one char only, only**.

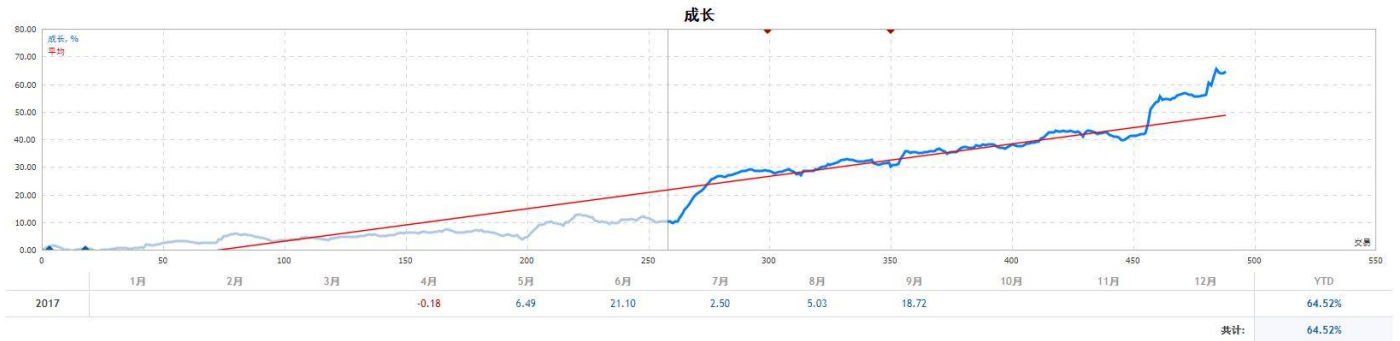
The installation is completed if you see the following panel and the little smile icon on the right-upper corner.

Super Copier System EA							
Contact Info beyondream2011@gmail.com							
SETTINGS & INFO							
	BP	SP	TP	BL	SL	TL	Profit
Signal #1 ON/ OFF Copy Scale: 1.0	4	13	17	0.04	0.13	0.17	11.32
Signal #2 ON/ OFF Copy Scale: 1.0	5	0	5	0.14	0.00	0.14	-10.74
Signal #3 ON/ OFF Copy Scale: 1.0	0	0	0	0.00	0.00	0.00	0.00
Signal #4 ON/ OFF Copy Scale: 1.0	0	0	0	0.00	0.00	0.00	0.00
Signal #5 ON/ OFF Copy Scale: 1.0	0	10	10	0.00	0.14	0.14	9.43
STATUS							
Stop DD: 30.00% (\$923.34)				Total Profit: 10.52			

Live Signal

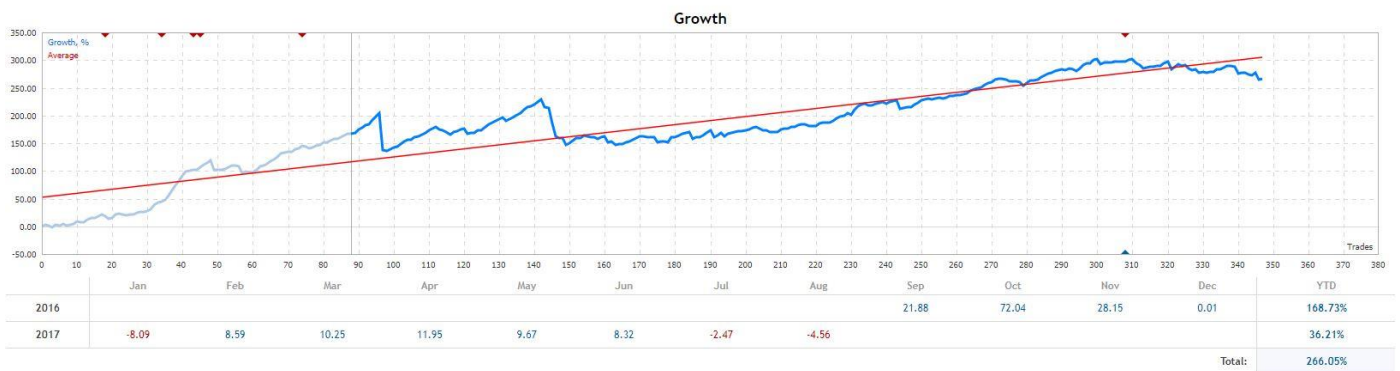
Signal #1

<https://www.mql5.com/zh/signals/317251>



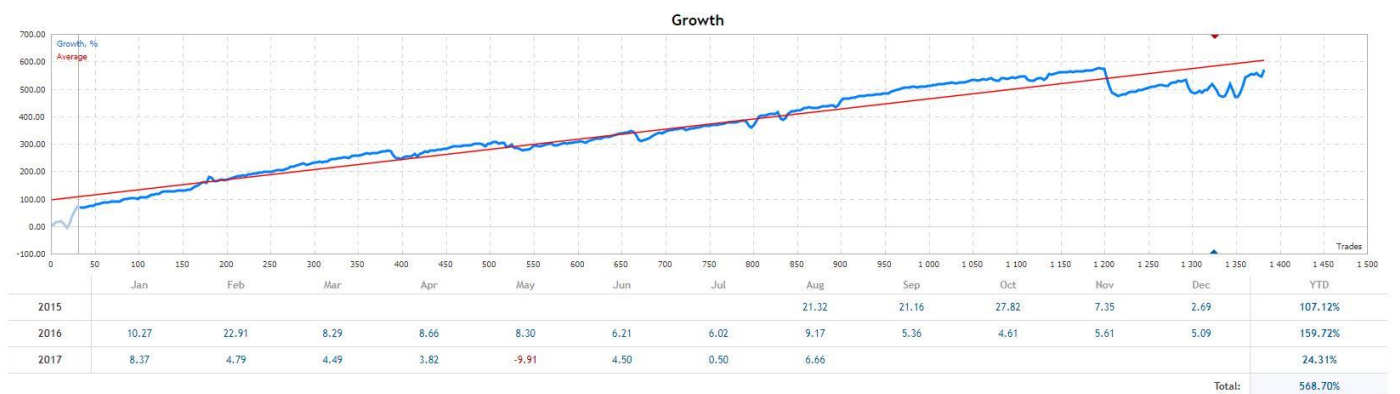
Signal #2

<https://www.mql5.com/en/signals/244905>



Signal #3

<https://www.mql5.com/en/signals/137898>



Signal #4

<https://www.mql5.com/zh/signals/273946>

