

MagicGirlDashboardEA v 2.2 by Swingman

Explanations by IRathi

This is a Multi-timeframe(MTF) strategy (Paulus and TudorGirl) trading in the direction of the higher time frame (TF) direction. The link to the strategy is:
<http://www.forexfactory.com/showthread.php?t=165948>

This is a **manual trading system** programmed as an Expert Advisor.
This Dashboard EA works with 4 and 5 digit brokers.

Installation of Indicators and Expert Advisor (Dashboard)

Copy/Paste MagiGirl DBEA into C:\Program Files\Metatrader 4\Experts
Copy/Paste all indicators into C:\Program Files\Metatrader 4\Experts\Indicator
Close platform and restart MT4.

To use Dashboard within the platform:

Open up a chart. Right click on chart. Go to properties at the end of menu. Go to colours. Place Black on all options except FOREGROUND.(white). THIS WILL BLACKOUT THE CHART. PLACE either version of dashboard as INDICATOR (custom indicator menu from platform) or dashboard as EA from Expert Advisor Menu from within the platform. There should be a smiley face on the top right of the chart. If not....go to tools... options....Expert Advisors....tick Allow live trading.

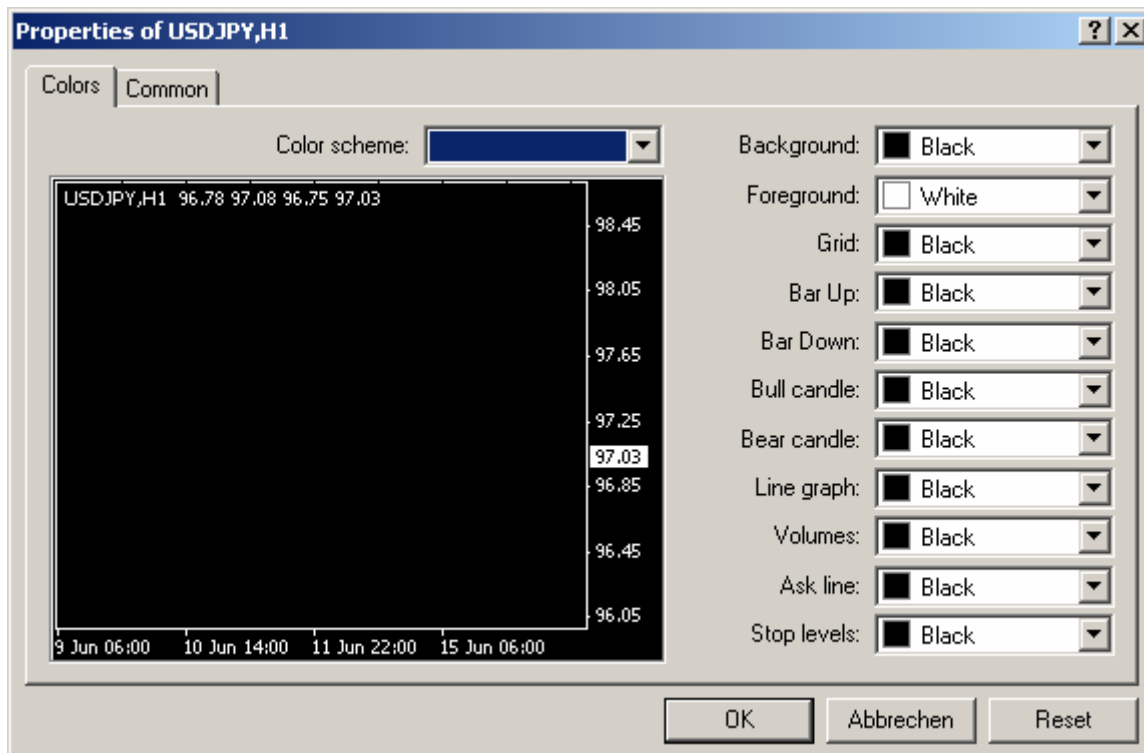


Figure 1. Shows how to black out the chart before placing Dashboard EA.

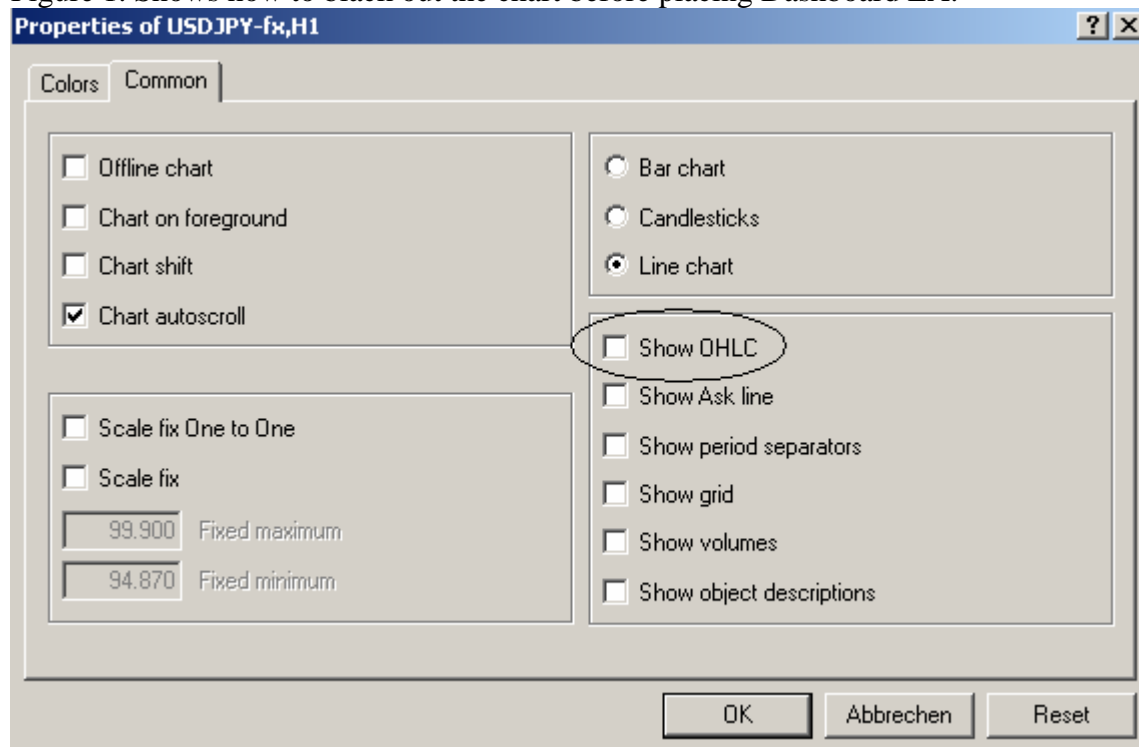


Figure 2. Shows Properties of chart...Common Tab... Use these settings to prepare chart before placing dashboard EA on chart



Figure 3: Show the MagicGirl EA v 2.2 dashboard. Note smiley face on Top Right hand corner.

Column Pairs: Shows the currencies pairs on the broker platform or the choice you put into the INPUTS tab.

Current Price: Realtime BID price of each currency

Entry:
StopLoss:
W/L(Pips)

Numbers will appear when you start trading and INPUTS set to TRUE

Signal column

[1] and squiggly arrows column: There is a column which has [1]/[1] or 2, 3 or Special green /red arrows (squiggle-like):

[1] or [1] represents a entry signal on the M5 and that all 4xTF are showing a full signal LONG/SHORT 3 or any number (2,3,4,5,6,etc) shows that the number of full histogram bars on the M5 TF since the entry signal (DO NOT ENTER from 3 onwards.) green for long direction red for short direction.

Special arrows: Early warning signals that the Higher TF directions are synchronized . Get ready to enter on H1 when [1] or [1] appears.

TrendMagic column (TM)

There is a column with different kinds of arrows from The thin arrows (green and red), The transparent arrows (green and red), The thick arrows (light blue and magenta).

This represents:

- Round arrows: TrendMagic, TF trends and Vorticity trends are synchronized
- Transparent arrows: all trends are synchronized, but the candle colour don't confirm the trend direction
- Thin arrows: TrendMagic and Vorticity trend are synchronized, and the sum of TF trends is identical with the trend
- Triangle arrows: shows only the TrendMagic trend, and the other conditions are not fulfilled

TimeFrames (TF) trend column: has 4 little columns represents the M5,M15,M30,H1 (left to right) with coloured squares. Blue, red or yellow which corresponds to the HG0001a indicator used in the strategy.

Combi Trend Column: Represents in ranking order the trend strength for the individual pairs of the list. This is calculated from the Trend strength of single currencies below on the dashboard (**Trend Strength of single currencies**) .The higher the pair is on the list the stronger the trend. The positive or negative sign is irrelevant. Eg AUDJPY (57.6 -(-60.8)=118.4 (internal rounding of values).

Vorti Column: Represents the Vorticity indicator as to its direction in the TF you are trading.

ATR column: ATR(34) values for each currency pair of the TF you are trading

TrendStrength for each single currency pair is shown in a horizontal line below the columns of the dashboard.

Input Tabs Variables for MagicGirl Dashboard EA v2.2

PairlistsList1: } A number of Currency Pairs are already added. (Default) Add or
PairlistsList2: } delete securities here with a “comma” to separate each new security.
PairlistsList3: }

HG001a MTF Parameters

TimeFrameList: 5,15,30,60 (Default) Change to higher TFs for swing traders always in Minutes.

Use_HG001a_MTF: False (Default)

SendAlert_Signals :False (Default)

SendEmail_Signals: False (Default)

Display_Parameters

Apply_TrendRanking: True (Default)

Show_WinLoss_in Pips: False (Default)

Show_EntryValues: true (Default)

Show_Single Currencies: true (Default) Represents the Trend strength of individual currencies in the row at the bottom of the dashboard. Change if you prefer not to see Single currency trend strength.

ShowColumn_CurrentPrice: true (Default) Change if you prefer not to see current price.

ShowColumn_ATR : true (Default) This represent ATR (34)

ShowColumn_Pair Spread: true (Default) Change if you prefer not to see the pair spread.

ShowColumn_CombiTrend: true (Default) Change if you prefer not to see current price.

TrendMagic_Parameters

CCI: 50

ATR: 5

Other Parameters:

ATR_Period: 34

refreshPeriod: 1