

JCL's FOREX

A Trader For Traders

Setting up 8 hour (H8) charts

Help Section:

- [Back to main menu of help-section](#)

Make sure you close your MT4 before downloading the file

Save (not open) the file to this folder on your C Drive:

C:\Program Files\metatrader 4\experts\indicators

Conquer H8 (custom time frame on MT4)

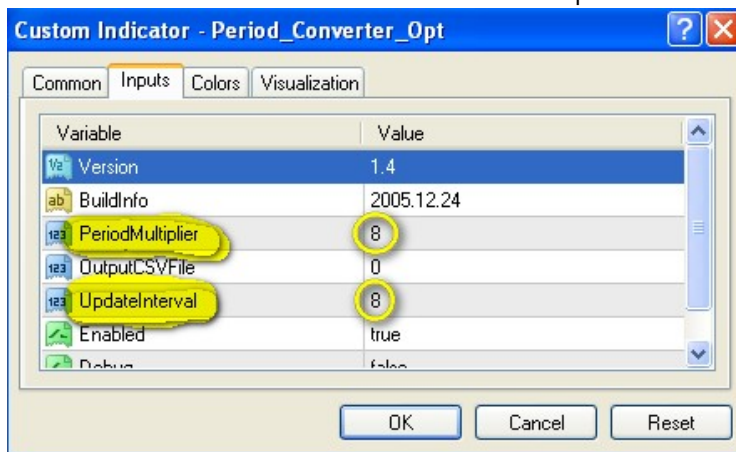
[Period Converter Opt](#)

8 hour (H8) charts - Fail Safe Setup

Follow these instructions step by step you will be up and running.

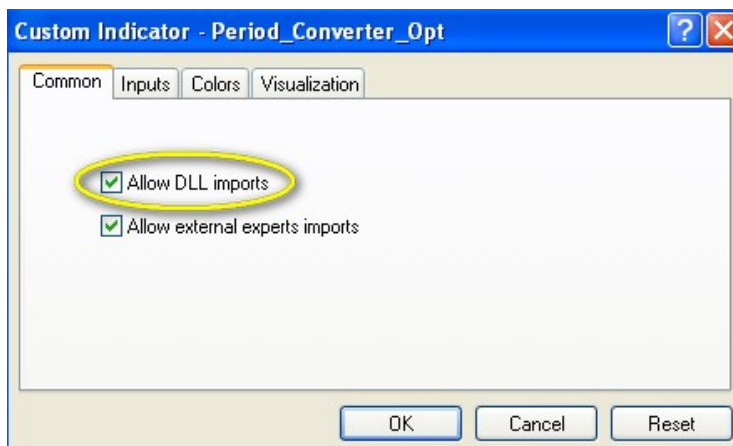
Close all your 1 hour and 8 hour charts and start over. Start with just one pair until you have it working.

1. Open a one chart of the eur/usd. Attach the Period_Converter_Opt and refer to 2. (a),(b) & (c) [here](#).
 2. Now click CHART > TEMPLATE > SAVE TEMPLATE > and name it "1". For the future pairs as soon as you open the 1 hour chart you can load this template now and move directly to the next step - 3.
 3. Drag the mouse from the left of the chart to the right and go back until you see June of 2008. Then LEAVE the 1 hour chart open (never close it or the 8 hour chart will not update in real time).
 4. Now open a 8 hour chart.
- File > Open Offline > then choosing the currency pair you have the 1 hour chart dragged to June of 2008 for (this is what allows the True Trend to show), H8
5. Attach the True Trend. If you save a chart template of your 4 hour chart setup with all the indicators you can just load it directly onto the 8 hour chart.



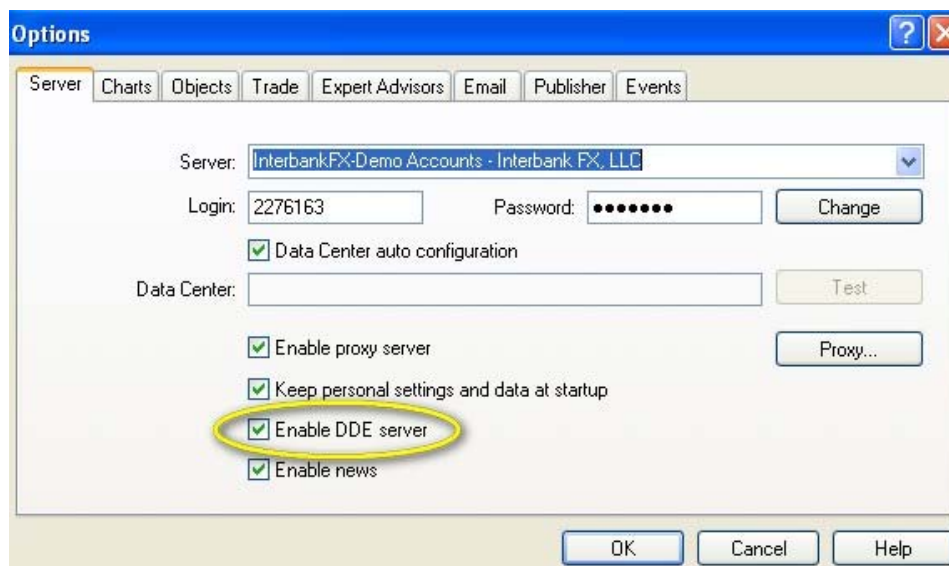
2(b). Next to the Input tab click on the Common tab.

Click the box Allow DLL imports and check it off.



2(c). Next click TOOLS > OPTIONS > Server tab

Click the box Enable DDE server and check it off.



3. Leave the 1 hour chart open (always) and always in order to gain enough data **for the 8 hour chart to show the true trend indicator** drag the chart to the left going back in time. The further you go the better.

Uncheck the green arrow on the toolbar before you pull the chart to the left so it does not bounce back to the right.



Now leaving the 1 hour chart w/ the Period_Converter_Opt indicator attached click open the 8 hour chart by:

File > Open Offline > then choosing the currency pair, H8

4. Attach the chart template you have saved for the Conquer.

Chart > Template > Load > Conquer

Chart Setup Help

If your charts are not updating in real time that is because you need to keep the 1 hour partner chart open so the 8 hour chart updates in real time.

If the True Trend is not showing it is because you need to pull the chart back to the left to get enough data history for the TT to appear as per Step 3 above.