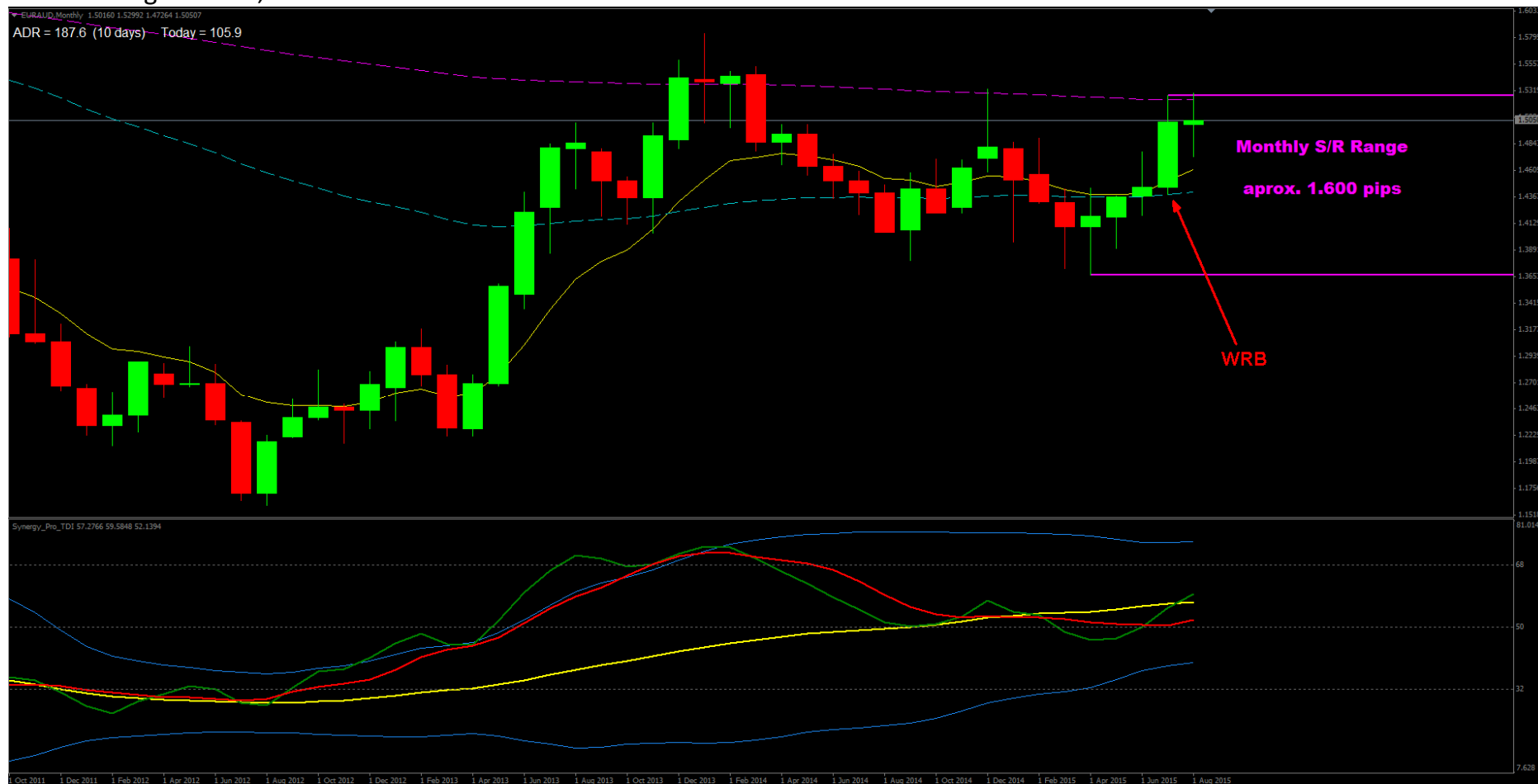
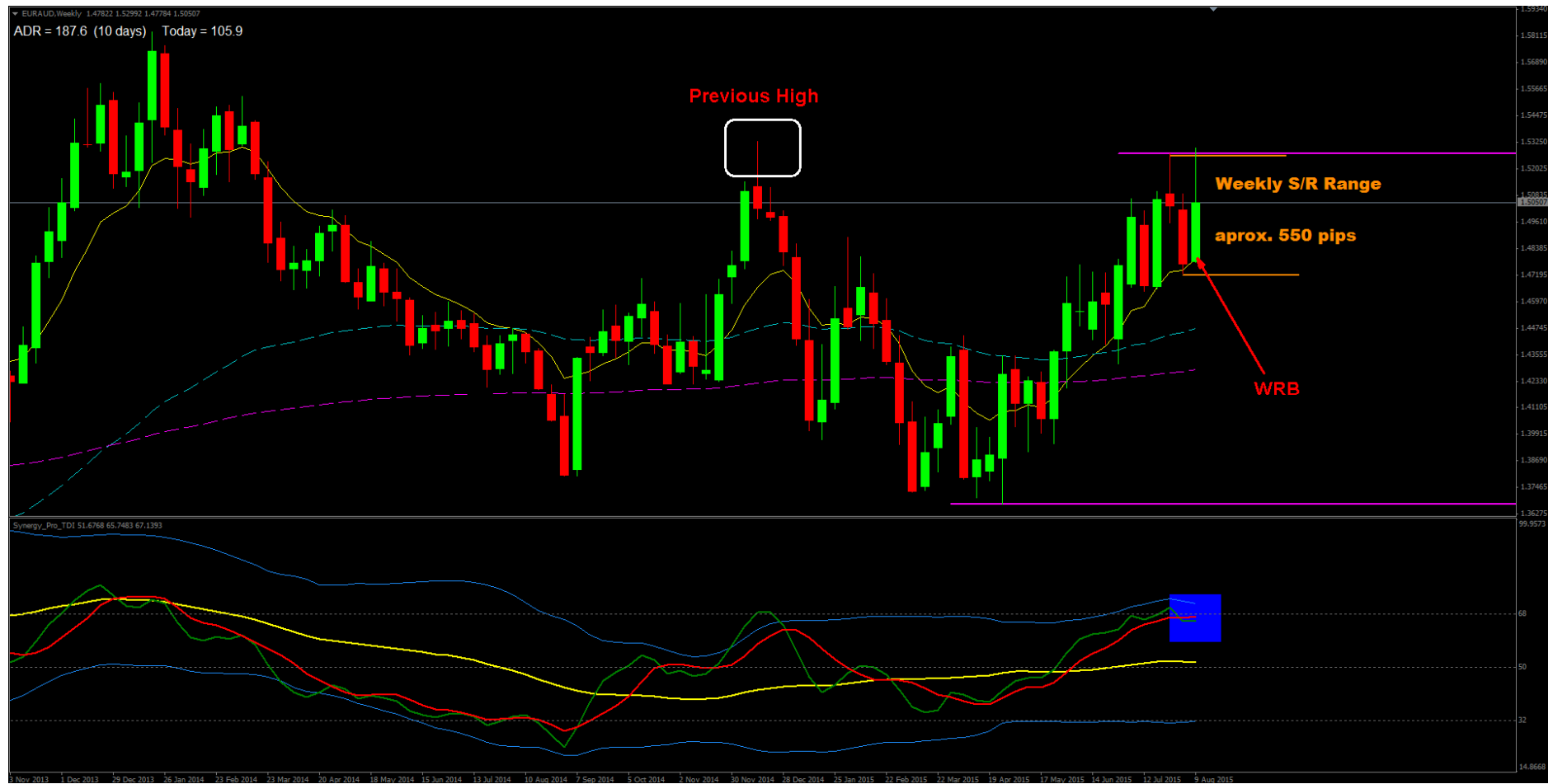


EURAUD august 2015, week 35 MONTHLY



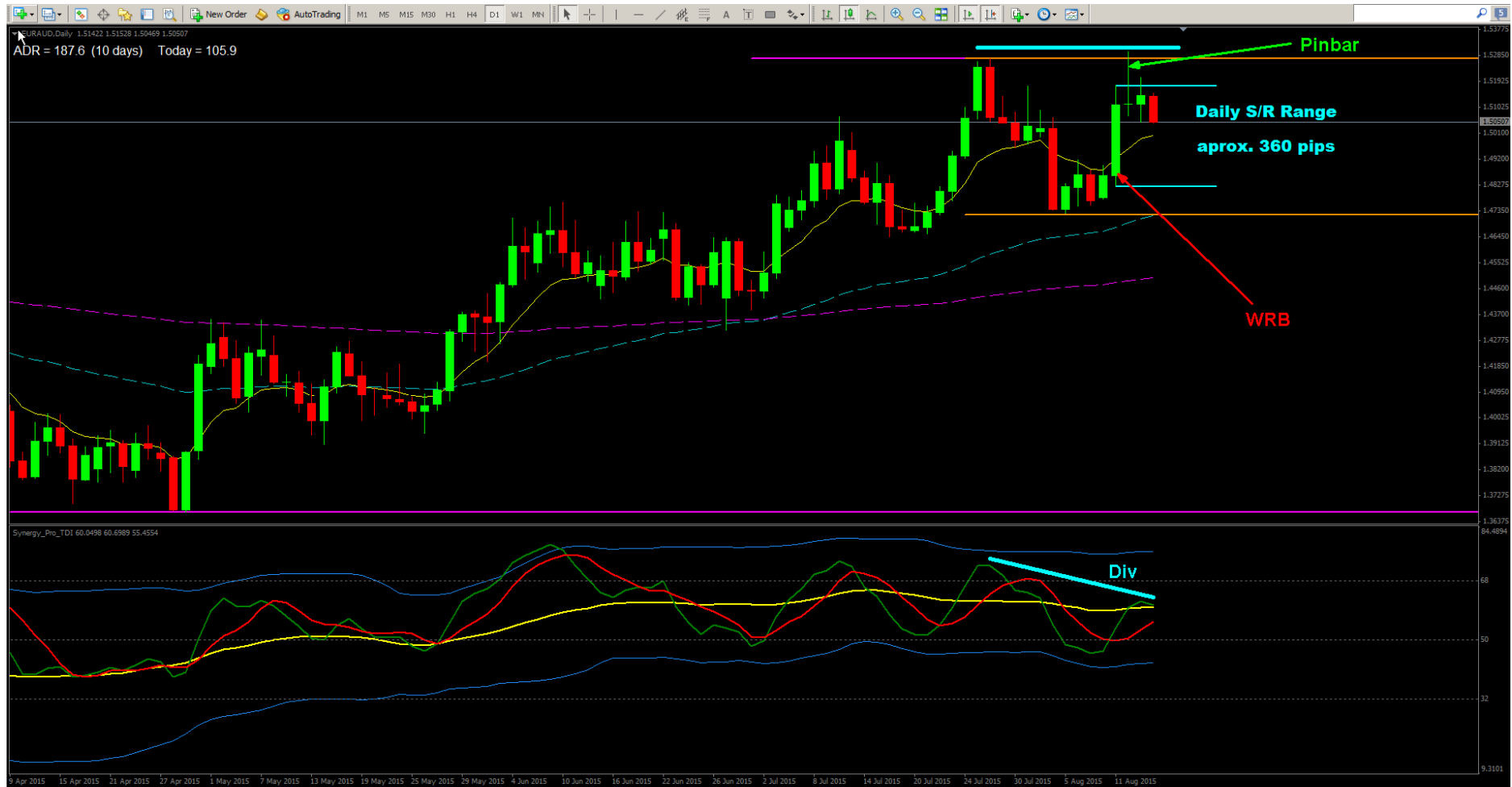
Monthly Range 1.600 pips, WRB (previous 3 smallest candles)

WEEKLY



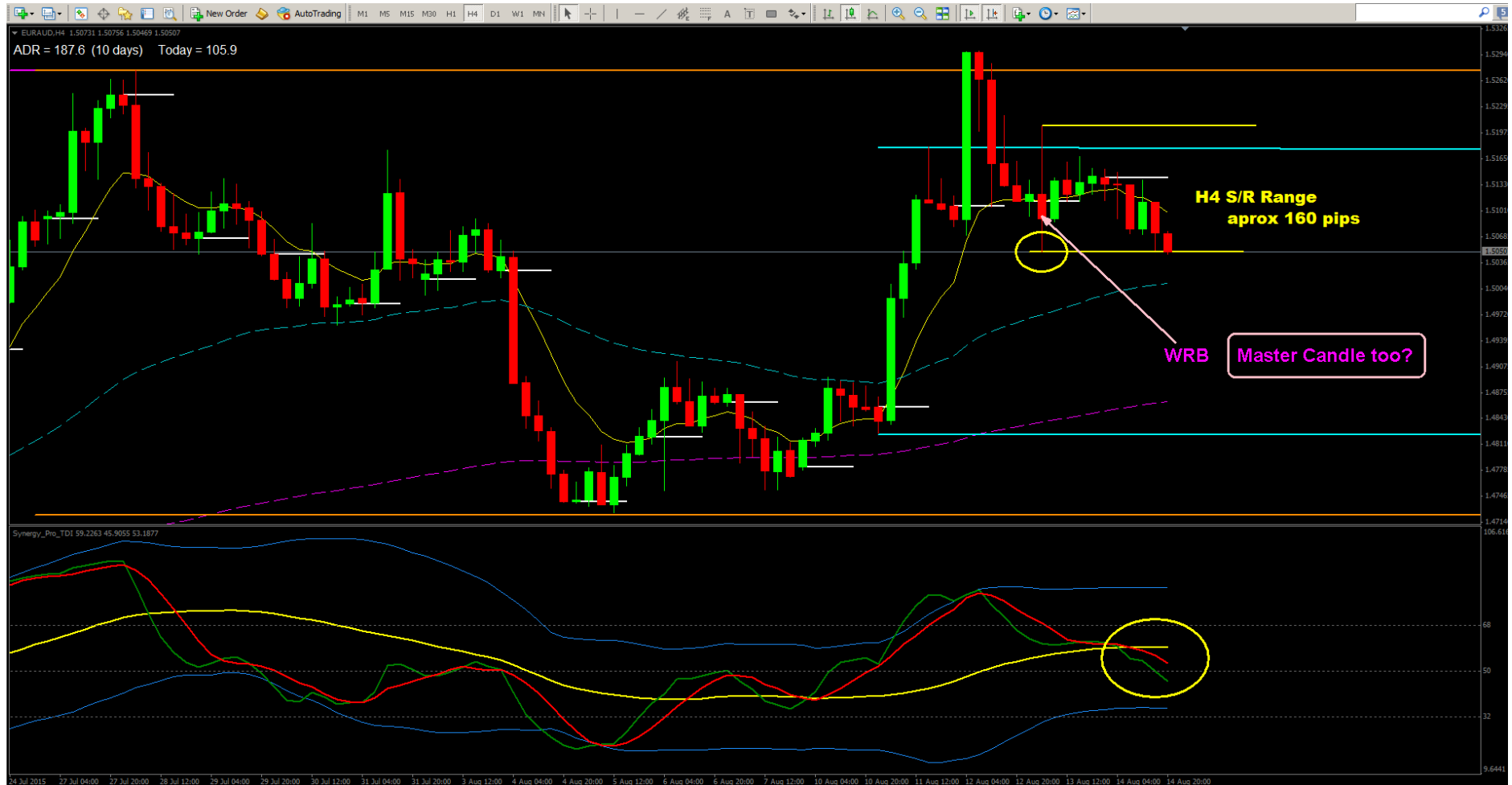
Bounce off Monthly Sup, bounce off previous High, WRB (3 previous smallest candles), TDI parallel

DAILY



Divergence price-TDI, bounce off Monthly, Weekly Support, Pin bar (shooting star – reversal candle), WRB, TDI Green very close to Yellow line

H4

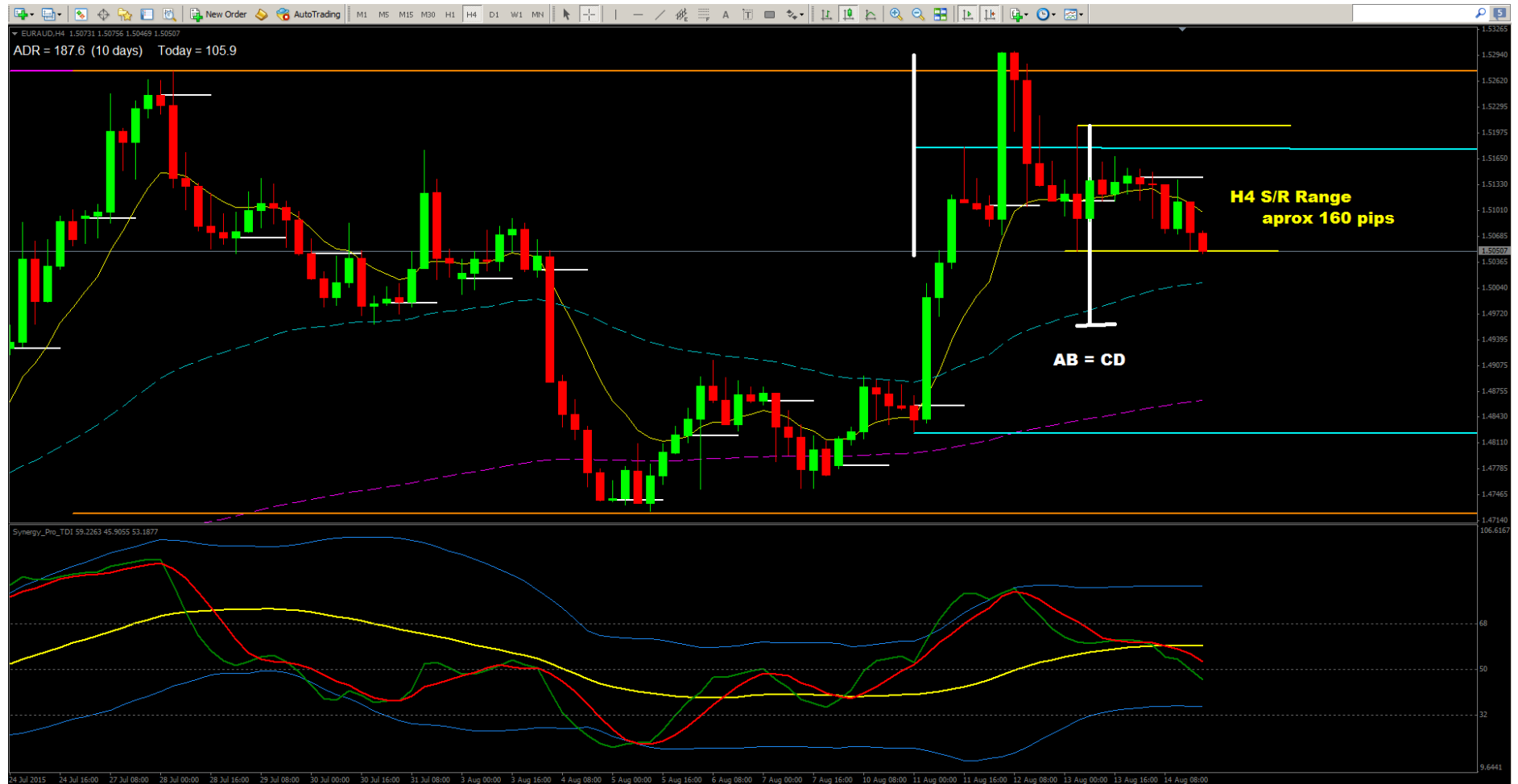


Price stopped at Support of WRB (Master candle too?). TDI is on Short position, angle 4-5, under Yellow Line, under 50.

THIS IS FIRST ENTRY ATTENTION. If next H4 candle closed under Support, break WRB, I will take a Short Trade.

First Target 1.5000

H4 PRICE PROJECTION



My price projection AB=CD is price aprox. 1.4950