

Dear Friends,

This is small gift to Seller9 who give us a great pease of a system called Slots.

<http://www.forexfactory.com/showthread.php?t=446654>

I also give a big "Thank You" for all people who share the charts with the settings that they go for it. This document will be updated regularly when new settings are posted.

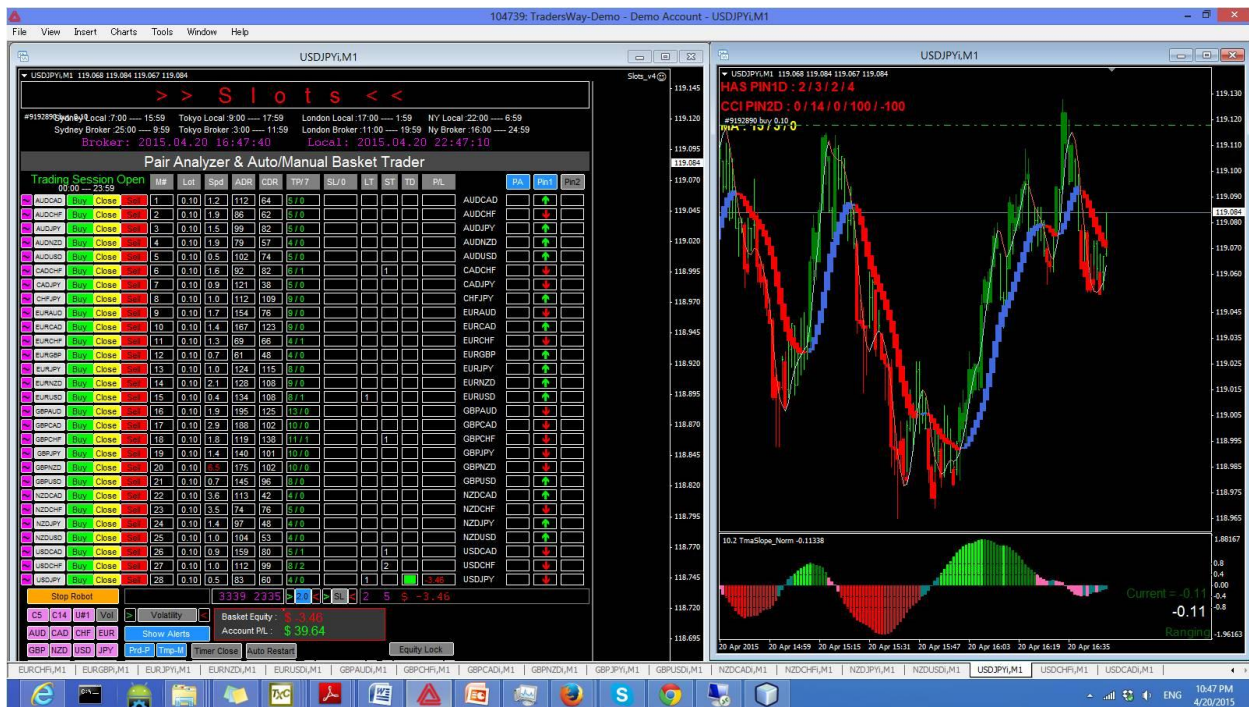
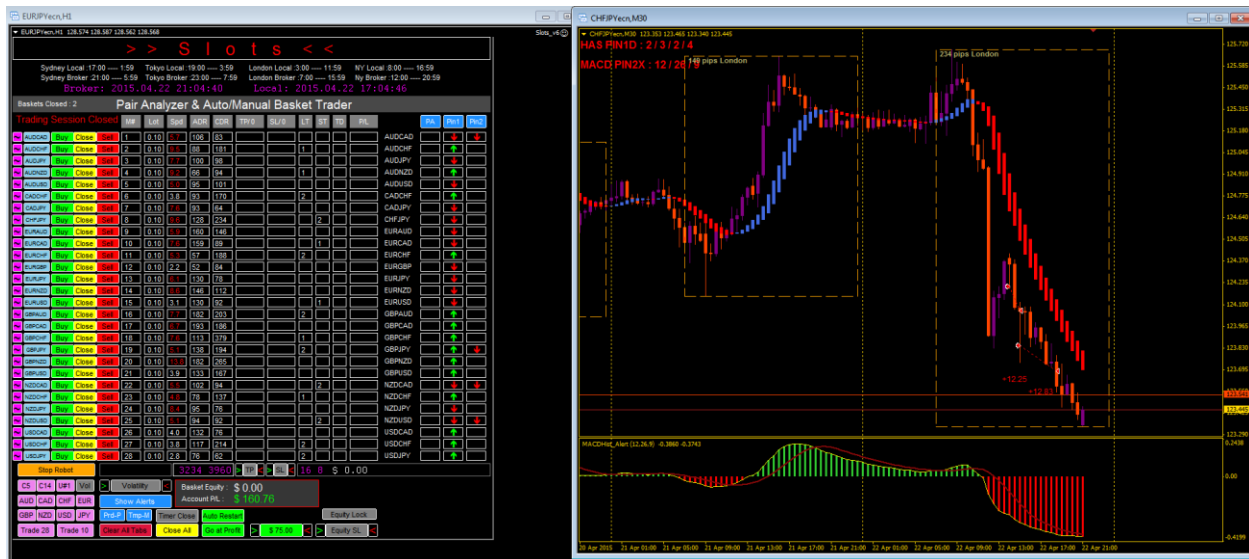
Pictures are speaking for themselves,

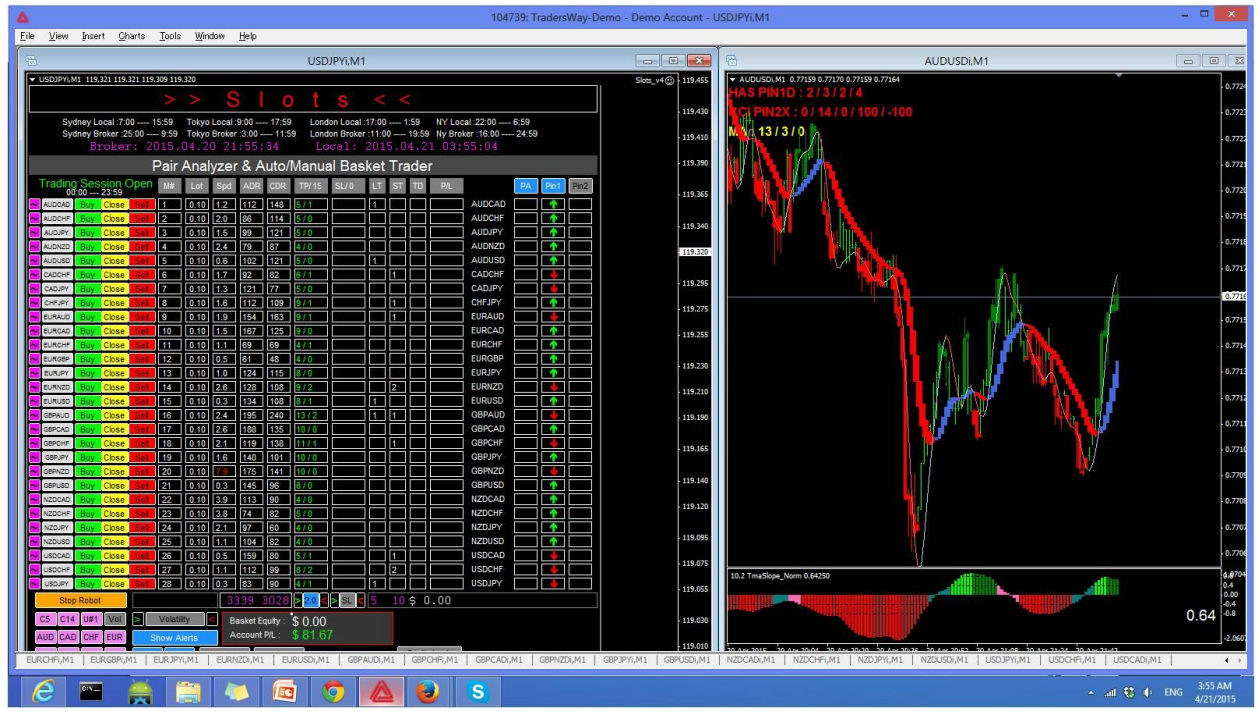
Thanks,

Regards,

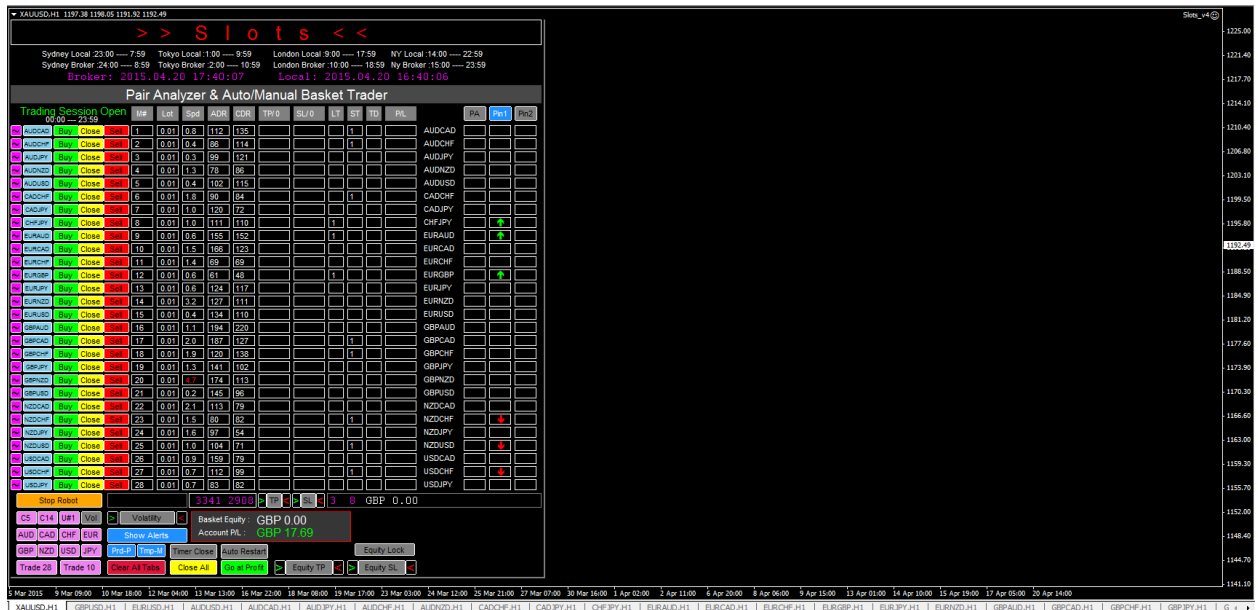
StOoOk

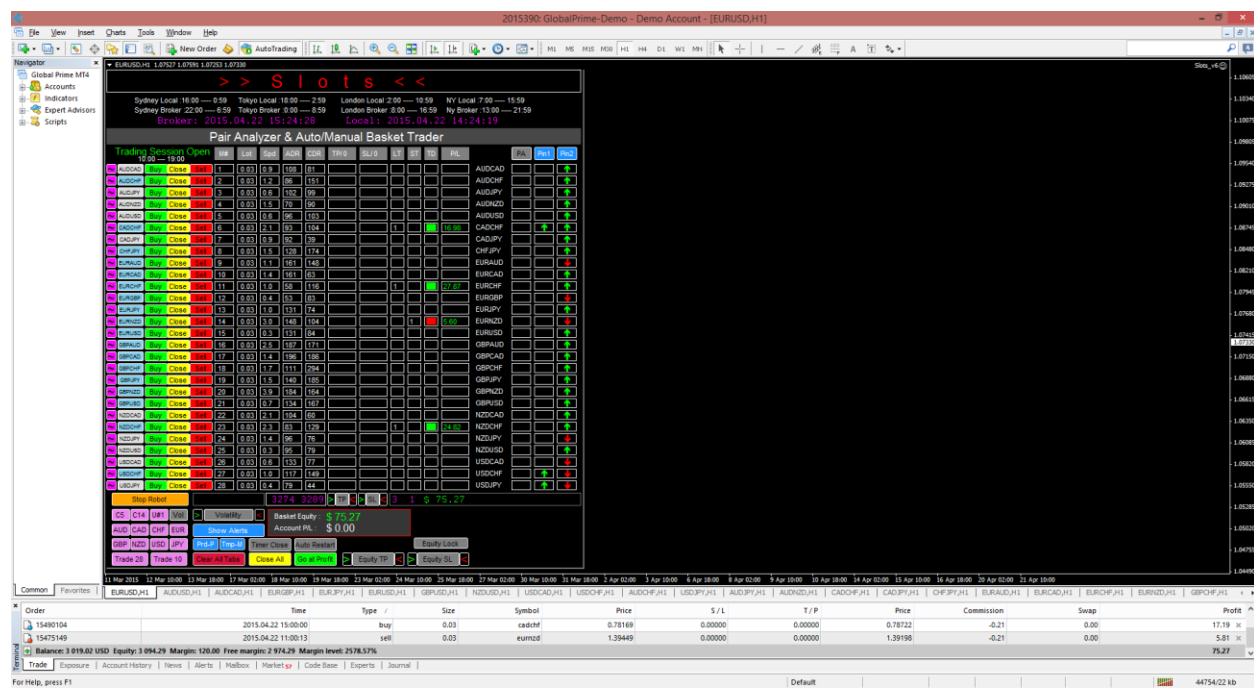
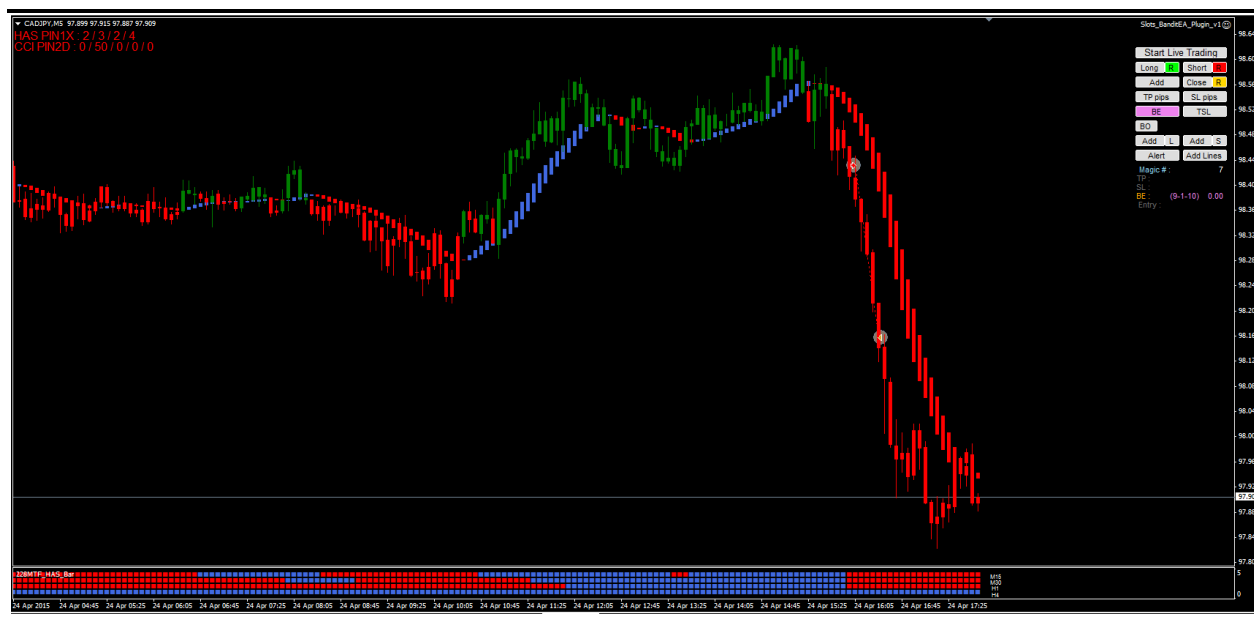


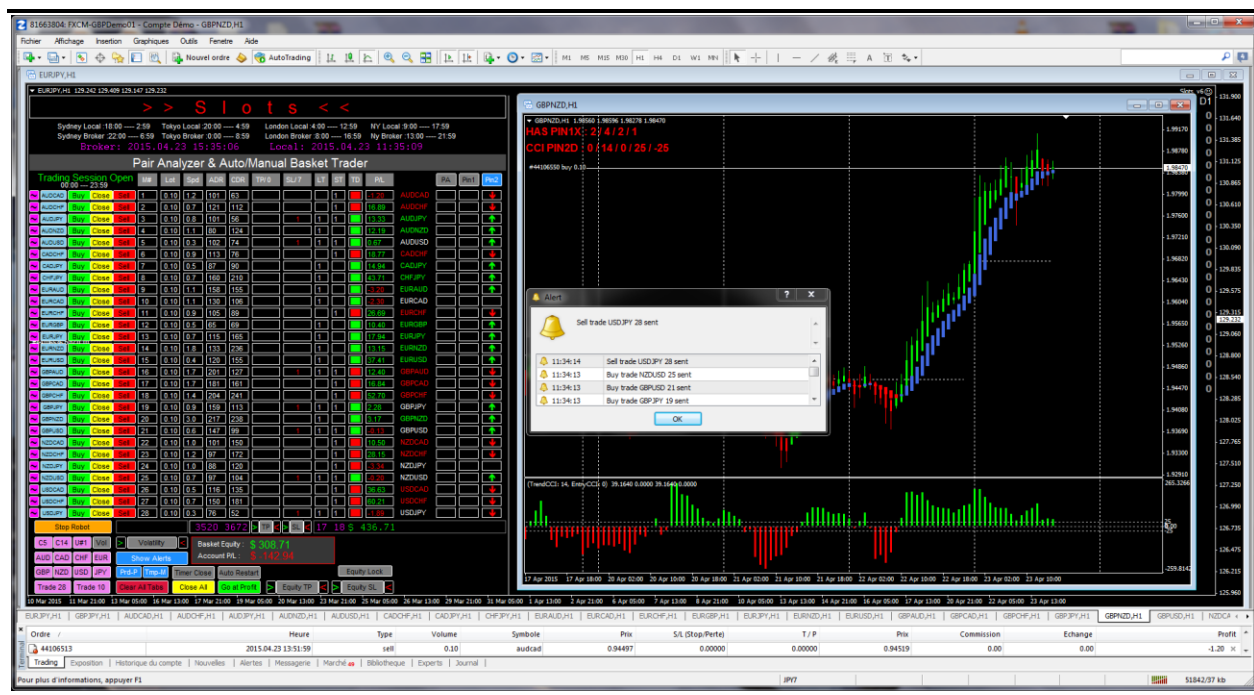




Keeping it simple - H1 CCI 50/ 0 level cross.







Dear all,

Finally I have started seeing the green. I started making money since yesterday. Here is the setup:
Option 1. using Slots_MA2_Plugin_v1.ex4 FastMA 13 SlowMA 34 mode 3 .

Option 2.Has Direction 3-13-3-34 and CCI Direction 110 -0-0 and and PA

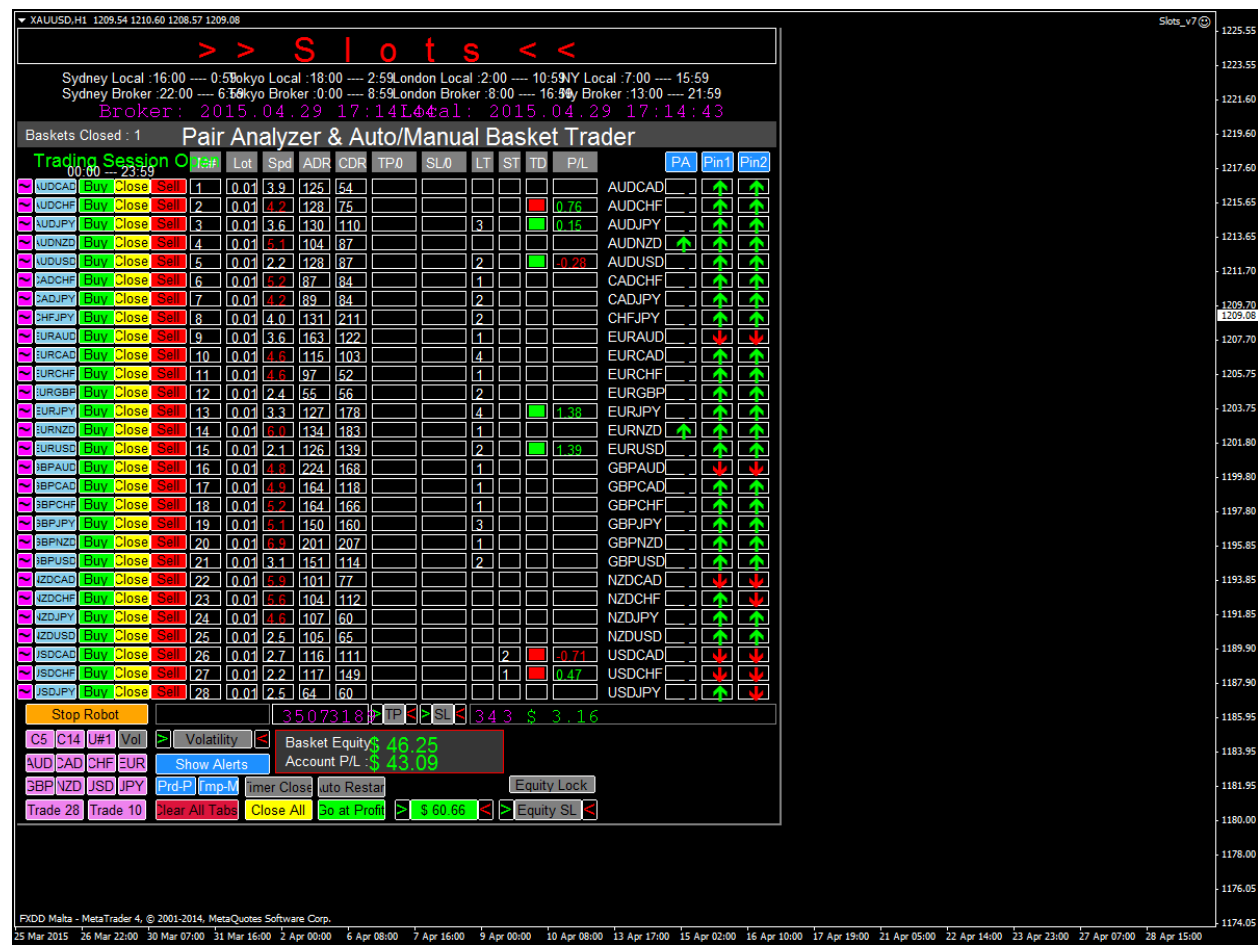
"I always set SL with TRL no TP I use Go to Profit of \$20 Using micro lots. SL will be at FIBO levels from BobokusFiboFixed.ex4"

I used both one on VPS and one my Laptop at the same time.

Good luck to you all

Only using Tokyo , London and NY trading sessions.

I am using live trading nomore Demos



EURUSDpro,H1

EURUSDpro,H1 1.09965 1.10089 1.09832 1.10083

>> Slots <<

Sydney Local : 0:00 --- 8:59 Tokyo Local : 2:00 --- 10:59 London Local : 10:00 --- 18:59 NY Local : 15:00 --- 23:59
Sydney Broker : 22:00 --- 6:59 Tokyo Broker : 0:00 --- 8:59 London Broker : 8:00 --- 16:59 NY Broker : 13:00 --- 21:59
Broker : 2015.04.29 08:52:49 Local : 2015.04.29 11:52:36

Baskets Closed : 1

Trading Session Open 10:00 --- 22:55

	M#	Lot	Spd	ADR	CDR	TP/0	SL/0	LT	ST	TD	P/L		PA	Pin1	Pin2
AUDCAD	Buy	Close	1	0.10	2.2	113	42					AUDCAD			
AUDCHF	Buy	Close	2	0.10	3.3	122	36			1		AUDCHF			
AUDJPY	Buy	Close	3	0.10	2.1	119	39					AUDJPY			
AUDNZD	Buy	Close	4	0.10	1.8	90	44			1		AUDNZD			
AUDUSD	Buy	Close	5	0.10	1.5	119	34					AUDUSD			
CADCHF	Buy	Close	6	0.10	3.2	85	28					CADCHF			
CADJPY	Buy	Close	7	0.10	2.6	87	50					CADJPY			
CHFJPY	Buy	Close	8	0.10	2.8	130	82			1		CHFJPY			
EURAUD	Buy	Close	9	0.10	2.8	150	82					EURAUD			
EURCAD	Buy	Close	10	0.10	3.1	113	49			1		EURCAD			
EURCHF	Buy	Close	11	0.10	2.8	95	23					EURCHF			
EURGBP	Buy	Close	12	0.10	1.0	54	21					EURGBP			
EURJPY	Buy	Close	13	0.10	2.2	127	92			1		EURJPY			
EURNZD	Buy	Close	14	0.10	3.0	127	96					EURNZD			
EURUSD	Buy	Close	15	0.10	1.5	129	50			1		EURUSD			
GBPAUD	Buy	Close	16	0.10	0.4	205	131					GBPAUD			
GBPCAD	Buy	Close	17	0.10	0.8	162	81					GBPCAD			
GBPCHF	Buy	Close	18	0.10	3.1	163	63					GBPCHF			
GBPJPY	Buy	Close	19	0.10	3.2	150	140					GBPJPY			
GBPNZD	Buy	Close	20	0.10	0.1	195	152					GBPNZD			
GBPUSD	Buy	Close	21	0.10	1.7	150	79					GBPUSD			
NZDCAD	Buy	Close	22	0.10	0.8	100	45					NZDCAD			
NZDCHF	Buy	Close	23	0.10	3.2	101	41					NZDCHF			
NZDJPY	Buy	Close	24	0.10	3.5	100	50					NZDJPY			
NZDUSD	Buy	Close	25	0.10	2.4	103	44					NZDUSD			
USDCAD	Buy	Close	26	0.10	1.9	117	32					USDCAD			
USDCHF	Buy	Close	27	0.10	2.0	117	37			1		USDCHF			
USDJPY	Buy	Close	28	0.10	1.3	64	41			1		USDJPY			

Stop Robot 3387 1705 TP SL 5 3 \$ 0.00

Basket Equity : \$ 149.30
Account P/L : \$ 149.30

Equity Lock

Trade 26 Trade 10 Clear All Tabs Close All Stop after \$ 150.00 \$ 200.00

EURUSDpro,H1

EURUSDpro,H1 1.09965 1.10089 1.09832 1.10083

HAS PINIX : 2/1/2/1
CCI PIN2D : 0/14/0/26/25

Expert - Slots_v7

About Common Inputs Dependencies

Variable	Value
Lot	0.1
Max_Spread	3.0
TradeComment	
Slippage	4
One_Trade_Per_Candle	true
FI4	-- Exit Settings --
Broker_Take_Profit_Pips	0.0
Broker_Stop_Loss_Pips	0.0
UsePIN1_Exit	true
UsePIN2_Exit	false
EL1	-----
EL2	- Equity Lock Settings -
EL3	-----
Trail_Last_Equity_Lock	true
Equity_Target_1	150.0
Equity_Lock_1	100.0
Equity_Target_2	0.0
Equity_Lock_2	0.0
Equity_Target_3	0.0

EURUSDpro,H1

EURUSDpro,H1 1.09965 1.10089 1.09832 1.10083

>> Slots <<

Sydney Local : 0:00 --- 8:59 Tokyo Local : 2:00 --- 10:59 London Local : 10:00 --- 18:59 NY Local : 15:00 --- 23:59
Sydney Broker : 22:00 --- 6:59 Tokyo Broker : 0:00 --- 8:59 London Broker : 8:00 --- 16:59 NY Broker : 13:00 --- 21:59
Broker : 2015.04.29 08:52:49 Local : 2015.04.29 11:52:36

Baskets Closed : 1

Trading Session Open 10:00 --- 22:55

	M#	Lot	Spd	ADR	CDR	TP/0	SL/0	LT	ST	TD	P/L		PA	Pin1	Pin2
AUDCAD	Buy	Close	1	0.10	2.2	113	42					AUDCAD			
AUDCHF	Buy	Close	2	0.10	3.3	122	36			1		AUDCHF			
AUDJPY	Buy	Close	3	0.10	2.1	119	39					AUDJPY			
AUDNZD	Buy	Close	4	0.10	1.8	90	44			1		AUDNZD			
AUDUSD	Buy	Close	5	0.10	1.5	119	34					AUDUSD			
CADCHF	Buy	Close	6	0.10	3.2	85	28					CADCHF			
CADJPY	Buy	Close	7	0.10	2.6	87	50					CADJPY			
CHFJPY	Buy	Close	8	0.10	2.8	130	82			1		CHFJPY			
EURAUD	Buy	Close	9	0.10	2.8	150	82					EURAUD			
EURCAD	Buy	Close	10	0.10	3.1	113	49			1		EURCAD			
EURCHF	Buy	Close	11	0.10	2.8	95	23					EURCHF			
EURGBP	Buy	Close	12	0.10	1.0	54	21					EURGBP			
EURJPY	Buy	Close	13	0.10	2.2	127	92			1		EURJPY			
EURNZD	Buy	Close	14	0.10	3.0	127	96					EURNZD			
EURUSD	Buy	Close	15	0.10	1.5	129	50			1		EURUSD			
GBPAUD	Buy	Close	16	0.10	0.4	205	131					GBPAUD			
GBPCAD	Buy	Close	17	0.10	0.8	162	81					GBPCAD			
GBPCHF	Buy	Close	18	0.10	3.1	163	63					GBPCHF			
GBPJPY	Buy	Close	19	0.10	3.2	150	140					GBPJPY			
GBPNZD	Buy	Close	20	0.10	0.1	195	152					GBPNZD			
GBPUSD	Buy	Close	21	0.10	1.7	150	79					GBPUSD			
NZDCAD	Buy	Close	22	0.10	0.8	100	45					NZDCAD			
NZDCHF	Buy	Close	23	0.10	3.2	101	41					NZDCHF			
NZDJPY	Buy	Close	24	0.10	3.5	100	50					NZDJPY			
NZDUSD	Buy	Close	25	0.10	2.4	103	44					NZDUSD			
USDCAD	Buy	Close	26	0.10	1.9	117	32					USDCAD			
USDCHF	Buy	Close	27	0.10	2.0	117	37			1		USDCHF			
USDJPY	Buy	Close	28	0.10	1.3	64	41			1		USDJPY			

Stop Robot 3397 5323 TP SL 39 38 \$ 872.85

Basket Equity : \$ 134.45
Account P/L : \$ 134.45

Equity Lock

Trade 26 Trade 10 Clear All Tabs Close All Stop after \$ 150.00 \$ 200.00

EURUSDpro,H1

EURUSDpro,H1 1.09965 1.10089 1.09832 1.10083

HAS PINIX : 2/1/2/1
CCI PIN2D : 0/14/0/26/25

Expert - Slots_v7

About Common Inputs Dependencies

Variable	Value
Lot	0.1
Max_Spread	3.0
TradeComment	
Slippage	4
One_Trade_Per_Candle	true
FI4	-- Exit Settings --
Broker_Take_Profit_Pips	0.0
Broker_Stop_Loss_Pips	0.0
UsePIN1_Exit	true
UsePIN2_Exit	false
EL1	-----
EL2	- Equity Lock Settings -
EL3	-----
Trail_Last_Equity_Lock	true
Equity_Target_1	150.0
Equity_Lock_1	100.0
Equity_Target_2	0.0
Equity_Lock_2	0.0
Equity_Target_3	0.0

EURUSDpro,H1

EURUSDpro,H1 1.09965 1.10089 1.09832 1.10083

HAS PINIX : 2/1/2/1
CCI PIN2D : 0/14/0/26/25

Expert - Slots_v7

About Common Inputs Dependencies

Variable	Value
Lot	0.1
Max_Spread	3.0
TradeComment	
Slippage	4
One_Trade_Per_Candle	true
FI4	-- Exit Settings --
Broker_Take_Profit_Pips	0.0
Broker_Stop_Loss_Pips	0.0
UsePIN1_Exit	true
UsePIN2_Exit	false
EL1	-----
EL2	- Equity Lock Settings -
EL3	-----
Trail_Last_Equity_Lock	true
Equity_Target_1	150.0
Equity_Lock_1	100.0
Equity_Target_2	0.0
Equity_Lock_2	0.0
Equity_Target_3	0.0

EURUSDpro,H1

EURUSDpro,H1 1.09965 1.10089 1.09832 1.10083

HAS PINIX : 2/1/2/1
CCI PIN2D : 0/14/0/26/25

Expert - Slots_v7

About Common Inputs Dependencies

Variable	Value
Lot	0.1
Max_Spread	3.0
TradeComment	
Slippage	4
One_Trade_Per_Candle	true
FI4	-- Exit Settings --
Broker_Take_Profit_Pips	0.0
Broker_Stop_Loss_Pips	0.0
UsePIN1_Exit	true
UsePIN2_Exit	false
EL1	-----
EL2	- Equity Lock Settings -
EL3	-----
Trail_Last_Equity_Lock	true
Equity_Target_1	150.0
Equity_Lock_1	100.0
Equity_Target_2	0.0
Equity_Lock_2	0.0
Equity_Target_3	0.0

EURUSDpro,H1

EURUSDpro,H1 1.09965 1.10089 1.09832 1.10083

HAS PINIX : 2/1/2/1
CCI PIN2D : 0/14/0/26/25

Expert - Slots_v7

About Common Inputs Dependencies

Variable	Value
Lot	0.1
Max_Spread	3.0
TradeComment	
Slippage	4
One_Trade_Per_Candle	true
FI4	-- Exit Settings --
Broker_Take_Profit_Pips	0.0
Broker_Stop_Loss_Pips	0.0
UsePIN1_Exit	true
UsePIN2_Exit	false
EL1	-----
EL2	- Equity Lock Settings -
EL3	-----
Trail_Last_Equity_Lock	true
Equity_Target_1	150.0
Equity_Lock_1	100.0
Equity_Target_2	0.0
Equity_Lock_2	0.0
Equity_Target_3	0.0

EURUSDpro,H1

EURUSDpro,H1 1.09965 1.10089 1.09832 1.10083

HAS PINIX : 2/1/2/1
CCI PIN2D : 0/14/0/26/25

Expert - Slots_v7

About Common Inputs Dependencies

Variable	Value
Lot	0.1
Max_Spread	3.0
TradeComment	
Slippage	4
One_Trade_Per_Candle	true
FI4	-- Exit Settings --
Broker_Take_Profit_Pips	0.0
Broker_Stop_Loss_Pips	0.0
UsePIN1_Exit	true
UsePIN2_Exit	false
EL1	-----
EL2	- Equity Lock Settings -
EL3	-----
Trail_Last_Equity_Lock	true
Equity_Target_1	150.0
Equity_Lock_1	100.0
Equity_Target_2	0.0
Equity_Lock_2	0.0
Equity_Target_3	0.0

EURUSDpro,H1

EURUSDpro,H1 1.09965 1.10089 1.09832 1.10083

HAS PINIX : 2/1/2/1
CCI PIN2D : 0/14/0/26/25

Expert - Slots_v7

About Common Inputs Dependencies

Variable	Value
Lot	0.1
Max_Spread	3.0
TradeComment	
Slippage	4
One_Trade_Per_Candle	true
FI4	-- Exit Settings --
Broker_Take_Profit_Pips	0.0
Broker_Stop_Loss_Pips	0.0
UsePIN1_Exit	true
UsePIN2_Exit	false
EL1	-----
EL2	- Equity Lock Settings -
EL3	-----
Trail_Last_Equity_Lock	true
Equity_Target_1	150.0
Equity_Lock_1	100.0
Equity_Target_2	0.0
Equity_Lock_2	0.0
Equity_Target_3	0.0

EURUSDpro,H1

EURUSDpro,H1 1.09965 1.10089 1.09832 1.10083

HAS PINIX : 2/1/2/1
CCI PIN2D : 0/14/0/26/25

Expert - Slots_v7

About Common Inputs Dependencies

Variable	Value
Lot	0.1
Max_Spread	3.0
TradeComment	
Slippage	4
One_Trade_Per_Candle	true
FI4	-- Exit Settings --
Broker_Take_Profit_Pips	0.0
Broker_Stop_Loss_Pips	0.0
UsePIN1_Exit	true
UsePIN2_Exit	false
EL1	-----
EL2	- Equity Lock Settings -
EL3	-----
Trail_Last_Equity_Lock	true
Equity_Target_1	150.0
Equity_Lock_1	100.0
Equity_Target_2	0.0
Equity_Lock_2	0.0
Equity_Target_3	0.0

EURUSDpro,H1

EURUSDpro,H1 1.09965 1.10089 1.09832 1.10083

HAS PINIX : 2/1/2/1
CCI PIN2D : 0/14/0/26/25

Expert - Slots_v7

About Common Inputs Dependencies

Variable	Value
Lot	0.1
Max_Spread	3.0
TradeComment	
Slippage	4
One_Trade_Per_Candle	true
FI4	-- Exit Settings --
Broker_Take_Profit_Pips	0.0
Broker_Stop_Loss_Pips	0.0
UsePIN1_Exit	true
UsePIN2_Exit	false
EL1	-----
EL2	- Equity Lock Settings -
EL3	-----
Trail_Last_Equity_Lock	true
Equity_Target_1	150.0
Equity_Lock_1	100.0
Equity_Target_2	0.0
Equity_Lock_2	0.0
Equity_Target_3	0.0

EURUSDpro,H1

EURUSDpro,H1 1.09965 1.10089 1.09832 1.10083

HAS PINIX : 2/1/2/1
CCI PIN2D : 0/14/0/26/25

Expert - Slots_v7

About Common Inputs Dependencies

Variable	Value
Lot	0.1
Max_Spread	3.0
TradeComment	
Slippage	4
One_Trade_Per_Candle	true
FI4	-- Exit Settings --
Broker_Take_Profit_Pips	0.0
Broker_Stop_Loss_Pips	0.0
UsePIN1_Exit	true
UsePIN2_Exit	false
EL1	-----
EL2	- Equity Lock Settings -
EL3	-----
Trail_Last_Equity_Lock	true
Equity_Target_1	150.0
Equity_Lock_1	100.0
Equity_Target_2	0.0
Equity_Lock_2	0.0
Equity_Target_3	0.0

EURUSDpro,H1

EURUSDpro,H1 1.09965 1.10089 1.09832 1.10083

HAS PINIX : 2/1/2/1
CCI PIN2D : 0/14/0/26/25

Expert - Slots_v7

About Common Inputs Dependencies

Variable	Value
Lot	0.1
Max_Spread	3.0
TradeComment	
Slippage	4
One_Trade_Per_Candle	true
FI4	-- Exit Settings --
Broker_Take_Profit_Pips	0.0
Broker_Stop_Loss_Pips	0.0
UsePIN1_Exit	true
UsePIN2_Exit	false
EL1	-----
EL2	- Equity Lock Settings -
EL3	-----
Trail_Last_Equity_Lock	true
Equity_Target_1	150.0
Equity_Lock_1	100.0
Equity_Target_2	0.0
Equity_Lock_2	0.0

HAS PIN2X 2/4/2/1
CCI PIN1D 0/14/0/25/-25

File View Insert Charts Tools Window Help

New Order AutoTrading

M1 M5 M15 M30 H1 H4 D1 W1 MN

EURJPY,H1 134.230 134.269 134.047 134.116

> > S l o t s < <

Sydney Local :23:00 ---- 7:59 Tokyo Local :1:00 ---- 9:59 London Local :9:00 ---- 17:59 NY Local :14:00 ---- 22:59
Sydney Broker :22:00 ---- 6:59 Tokyo Broker :0:00 ---- 8:59 London Broker :8:00 ---- 16:59 Ny Broker :13:00 ---- 21:59
Broker: 2015.05.05 18:16:30 Local: 2015.05.05 17:16:30

Pair Analyzer & Auto/Manual Basket Trader

Trading Session Open 09:00 --- 19:59

	M#	Lot	Spd	ADR	CDR	TP/0	SL/0	LT	ST	TD	P/L		PA	Pin1	Pin2
~ AUDCAD Buy Close Sell	1	0.25	3.5	92	146							AUDCAD			
~ AUDCHF Buy Close Sell	2	0.25	3.3	105	120							AUDCHF		↓	
~ AUDJPY Buy Close Sell	3	0.25	3.8	96	179							AUDJPY		↑	
~ AUDNZD Buy Close Sell	4	0.25	5.2	80	178							AUDNZD		↑	
~ AUDUSD Buy Close Sell	5	0.25	2.1	95	163							AUDUSD		↑	
~ CADCHF Buy Close Sell	6	0.25	1.9	93	73				1			CADCHF		↓	
~ CADJPY Buy Close Sell	7	0.25	4.1	83	97			1				CADJPY		↑	
~ CHFJPY Buy Close Sell	8	0.25	4.7	144	195			1				CHFJPY		↑	
~ EURAUD Buy Close Sell	9	0.25	3.4	185	227							EURAUD		↓	
~ EURCAD Buy Close Sell	10	0.25	4.2	163	98							EURCAD		↓	
~ EURCHF Buy Close Sell	11	0.25	4.6	82	74							EURCHF		↓	
~ EURGBP Buy Close Sell	12	0.25	2.3	69	59							EURGBP		↑	
~ EURJPY Buy Close Sell	13	0.25	3.1	149	138			1				EURJPY		↑	
~ EURNZD Buy Close Sell	14	0.25	4.0	177	149			1				EURNZD			
~ EURUSD Buy Close Sell	15	0.25	2.3	133	137							EURUSD		↑	
~ GBPAUD Buy Close Sell	16	0.25	4.2	194	287							GBPAUD		↓	
~ GBPCAD Buy Close Sell	17	0.25	5.0	173	127				1			GBPCAD		↓	
~ GBPCHF Buy Close Sell	18	0.25	5.0	166	191				1			GBPCHF		↓	
~ GBPJPY Buy Close Sell	19	0.25	4.8	145	134			1				GBPJPY		↑	
~ GBPNZD Buy Close Sell	20	0.25	5.2	207	230			1				GBPNZD			
~ GBPUSD Buy Close Sell	21	0.25	3.0	144	120			2				GBPUSD		↑	
~ NZDCAD Buy Close Sell	22	0.25	3.2	91	116				1			NZDCAD		↓	
~ NZDCHF Buy Close Sell	23	0.25	2.8	98	104				1			NZDCHF		↓	
~ NZDJPY Buy Close Sell	24	0.25	5.5	84	58							NZDJPY		↑	↑
~ NZDUSD Buy Close Sell	25	0.25	2.3	83	88			1	1	10.50		NZDUSD		↑	↑
~ USDCAD Buy Close Sell	26	0.25	2.6	113	128				1			USDCAD		↓	
~ USDCCHF Buy Close Sell	27	0.25	3.6	111	169				1			USDCCHF		↓	
~ USDJPY Buy Close Sell	28	0.25	2.6	63	78			1				USDJPY		↓	

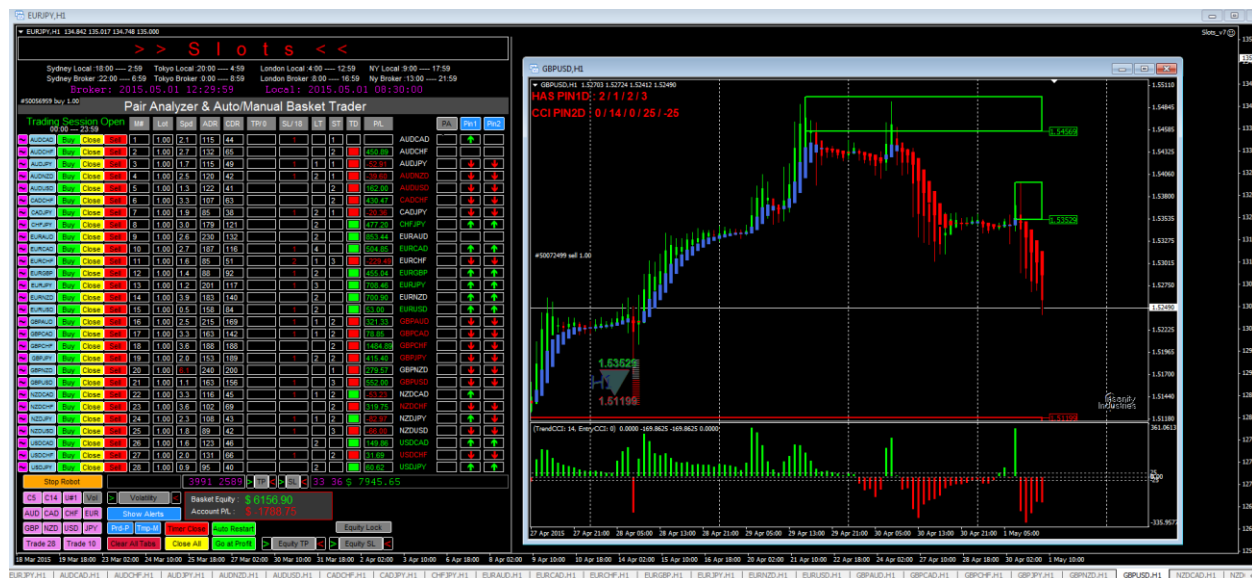
Stop Robot 3417 3864 TP SL 10 8 10.50

C5 C14 U#1 Vol Volatility Basket Equity : € 402.92
AUD CAD CHF EUR Show Alerts Account P/L : € 392.42

GBP NZD USD JPY Prd-P Tmp-M Timer Close Auto Restart Equity Lock

Trade 28 Trade 10 Clear All Tabs Close All Go at Profit Equity TP Equity SL

I am testing: HAS PIN1X: 2/4/2/1 exit = true
CCI PIN2D: 0/14/0/25/-25 exit = false





A very interesting day in the markets for the SLOTS EA with my setting:



Trading hours London Open (2:00 am local) to 5 minutes before US Stock Market Closes (2:55 pm local)

PIN 1 HAS X:2/4/2/1 exit true

PIN 2 CCI D:0/14/1/25/-25 exit false




```
HAS PIN1X:2/5/2/7
CCI PIN2D:1440/14/0/0/0
```

	UsePIN1_Exit	true
	UsePIN2_Exit	true

EURJPY,H1 135.399 135.478 135.394 135.423

>> Slots <<

Sydney Local :23:00 --- 7:59

Sydney Broker :24:00 --- 8:59

Tokyo Local :1:00 --- 9:59

Tokyo Broker :2:00 --- 10:59

London Local :9:00 --- 17:59

London Broker :10:00 --- 18:59

NY Local :14:00 --- 22:59

Ny Broker :15:00 --- 23:59

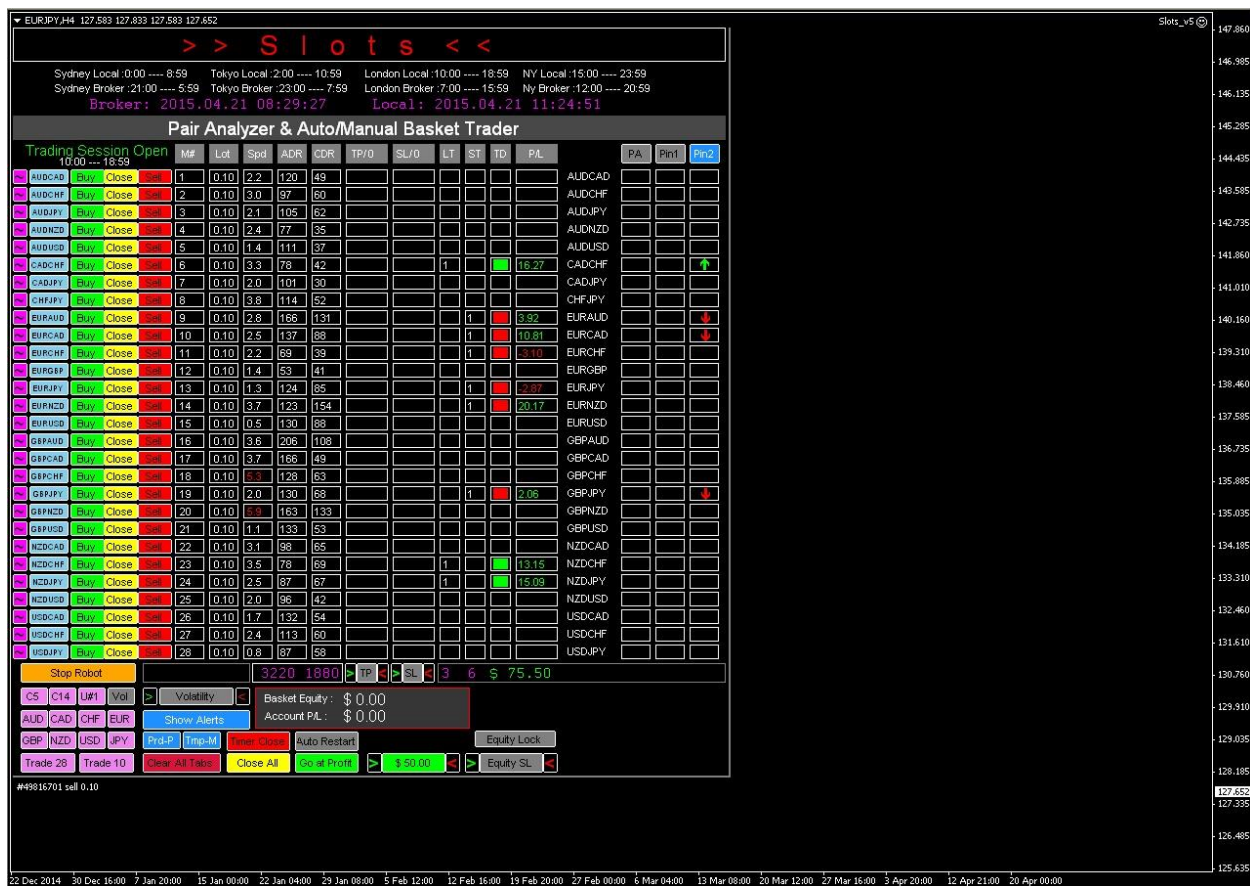
#9585855 buy 0.01 Broker: 2015.05.13 20:03:08 Local: 2015.05.13 19:02:26

Pair Analyzer & Auto/Manual Basket Trader

Trading Session Open 00:00 --- 23:59

	M#	Lot	Spd	ADR	CDR	TP/0	SL/33	LT	ST	TD	P/L	PA	Pin1	Pin2				
~ AUDCAD	Buy	Close	Sell	1	0.01	1.6	85	159			1	1			AUDCAD			↑
~ AUDCHF	Buy	Close	Sell	2	0.01	1.1	105	95			1	1	1	0.11	AUDCHF			↑
~ AUDJPY	Buy	Close	Sell	3	0.01	1.3	108	151				1		15.01	AUDJPY			↑
~ AUDNZD	Buy	Close	Sell	4	0.01	2.1	116	145			1	2		-0.05	AUDNZD			↑
~ AUDUSD	Buy	Close	Sell	5	0.01	0.7	108	176			1	2		20.11	AUDUSD			↑
~ CADCHF	Buy	Close	Sell	6	0.01	1.8	107	100			2		3	-3.28	CADCHF			↓
~ CADJPY	Buy	Close	Sell	7	0.01	1.5	89	70			1	1			CADJPY			↑
~ CHFJPY	Buy	Close	Sell	8	0.01	1.3	171	122			2	3		1.59	CHFJPY			↑
~ EURAUD	Buy	Close	Sell	9	0.01	2.2	171	184			1	1	1	-1.89	EURAUD			↓
~ EURCAD	Buy	Close	Sell	10	0.01	1.2	158	177			2	3		-1.73	EURCAD			↑
~ EURCHF	Buy	Close	Sell	11	0.01	1.5	70	37			2	3		0.36	EURCHF			↑
~ EURGBP	Buy	Close	Sell	12	0.01	1.0	91	105			2		2		EURGBP			↓
~ EURJPY	Buy	Close	Sell	13	0.01	1.2	152	130			2	3		2.35	EURJPY			↑
~ EURNZD	Buy	Close	Sell	14	0.01	2.2	208	271			1	1			EURNZD			↑
~ EURUSD	Buy	Close	Sell	15	0.01	0.1	142	180				1		19.88	EURUSD			↑
~ GBPAUD	Buy	Close	Sell	16	0.01	2.7	222	349			1	1			GBPAUD			↑
~ GBPCAD	Buy	Close	Sell	17	0.01	2.6	185	151			2	2			GBPCAD			↑
~ GBPCHF	Buy	Close	Sell	18	0.01	2.2	203	198			1	1			GBPCHF			↑
~ GBPJPY	Buy	Close	Sell	19	0.01	1.9	188	158			1	1			GBPJPY			↑
~ GBPNZD	Buy	Close	Sell	20	0.01	5.7	284	458			1	1			GBPNZD			↑
~ GBPUSD	Buy	Close	Sell	21	0.01	0.8	168	136				1		26.73	GBPUSD			↑
~ NZDCAD	Buy	Close	Sell	22	0.01	3.2	101	171			1		1		NZDCAD			↓
~ NZDCHF	Buy	Close	Sell	23	0.01	3.3	112	128			1		1		NZDCHF			↓
~ NZDJPY	Buy	Close	Sell	24	0.01	1.7	94	193			2		2		NZDJPY			↓
~ NZDUSD	Buy	Close	Sell	25	0.01	1.0	91	193			1							





Will update while this thread is going.