

## Secret of Sonic REntry

Before I explain what Sonic R is all about, let me explain to you, what make a profitable trade. I'm going to give you example using LONG trade in D1 TF.

For a Long position, one must buy in at a low price so that he can sell it out for profit at a higher price. Some call it, Buy Low, Sell High (BLSH).

Think about it. **It sounds easy or normal to do BLSH but in reality it ain't.**

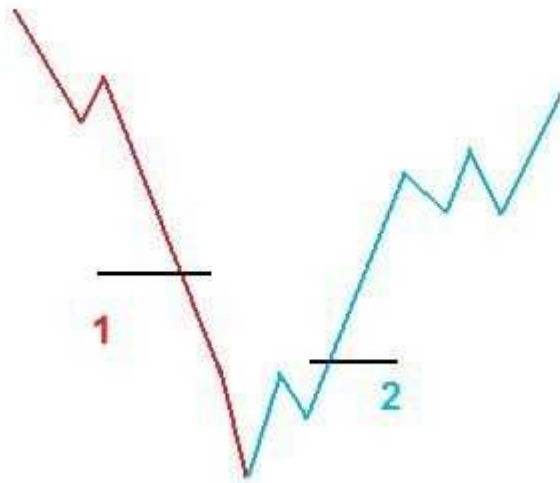
When everyone is selling, who on earth dare to buy in? You chart is showing a dive in of the price. I know some professional and institutional traders do that as they know something we (retail traders) do not.

If a retail trader is buying in, he must be a kamikaze trader or simply do not know what he is doing .

See No.1 in attached pic.

But a smart trader does something smarter. He look/wait for 'lil signs of possible trend reversal'. He may not be getting in at a so-called lowest price but the probability of making his trade a profitable one is high... See No.2 in attached pic.

So what are the 'lil signs of possible trend reversal'? This is what James 16 is all about and J16 is the most popular thread in FF.



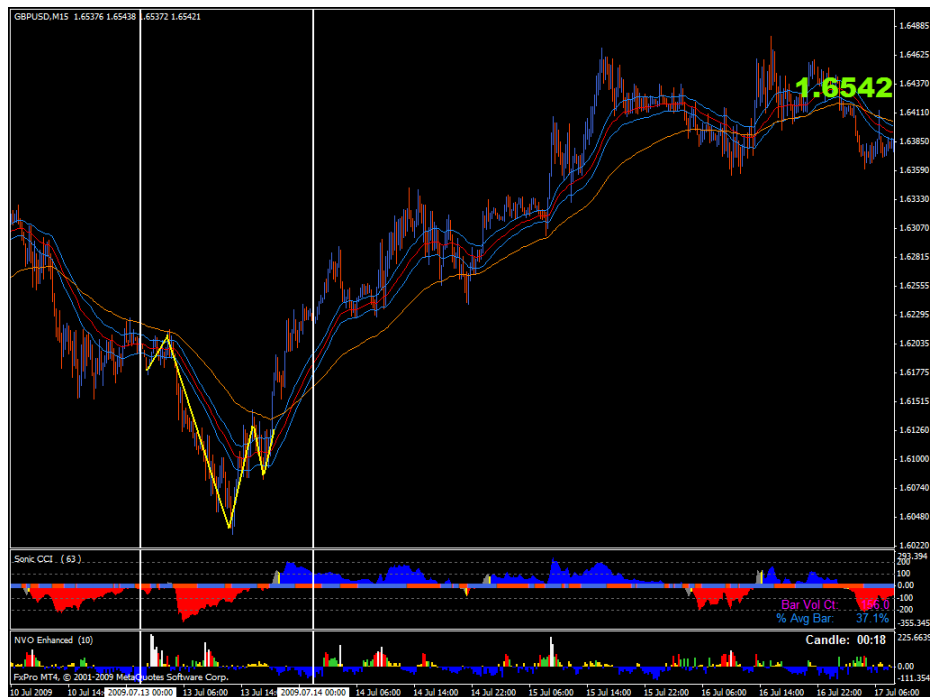
GBPUSD Daily 1.65817 1.66076 1.64894 1.65421

Bar: 23:59  
 Bid: 23:59  
 Ask: 23:07  
 Spread: 13:07  
 New York: 08:07  
 GMT: 14:07

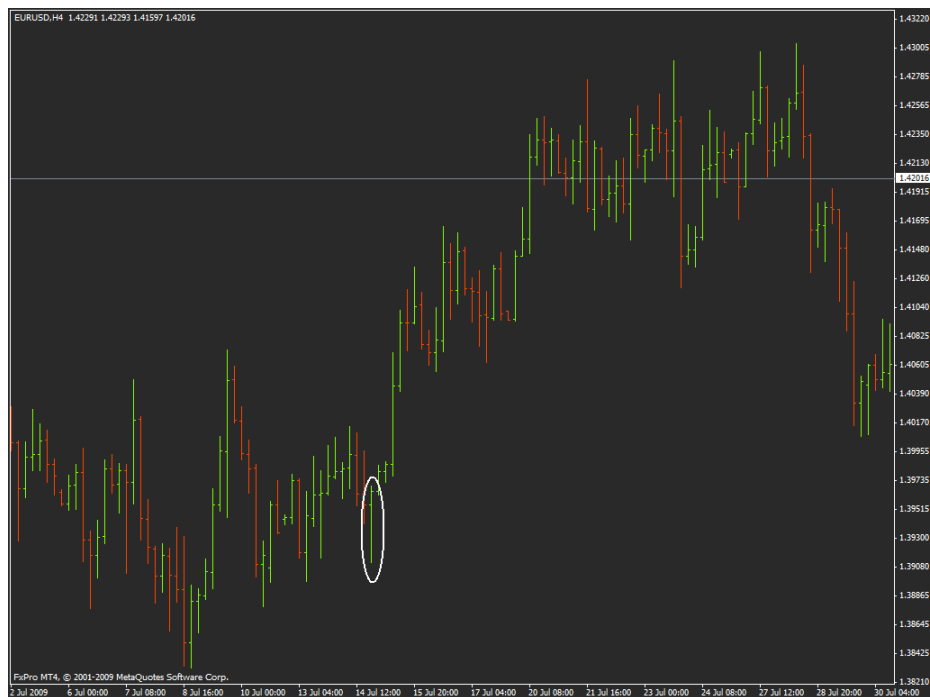
1.7145  
 1.7019  
 1.6890  
 1.6764  
 1.6634  
 1.6542  
 1.6508  
 1.6379  
 1.6253  
 1.6123  
 1.5997  
 1.5868  
 1.5743  
 1.5612  
 1.5486  
 1.5357  
 1.5231  
 1.5101  
 1.4975  
 1.4846  
 1.4720  
 1.4590  
 1.4464  
 1.4335  
 1.4209

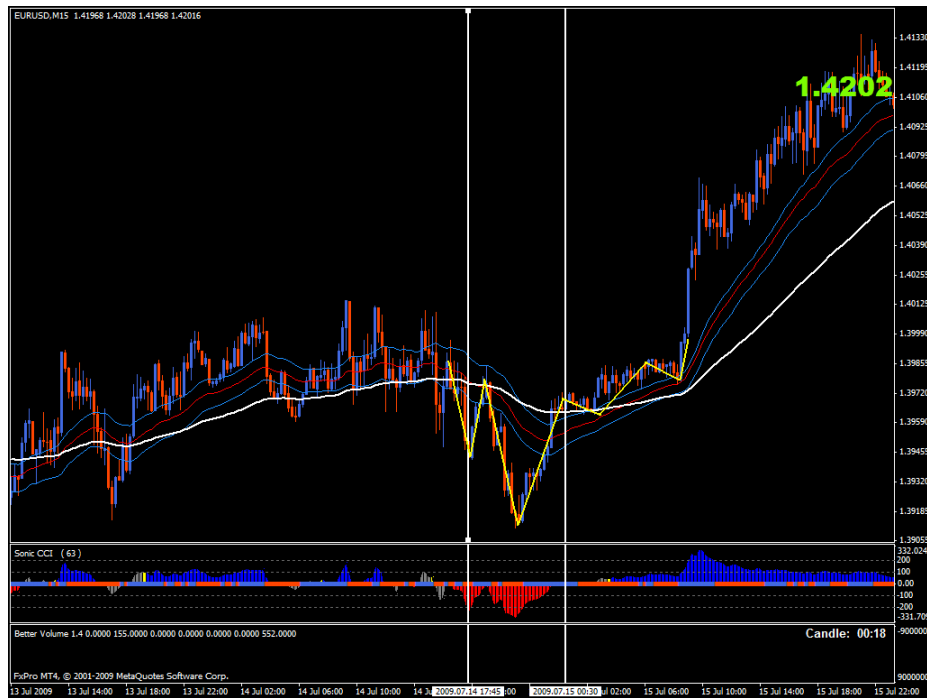
1 Apr 2009 10 Apr 2009 20 Apr 2009 29 Apr 2009 8 May 2009 18 May 2009 27 May 2009 5 Jun 2009 15 Jun 2009 24 Jun 2009 3 Jul 2009 13 Jul 2009 23 Jul 2009 31 Jul 2009 10 Aug 2009

FullPro MT4 © 2001-2009 MetaQuotes Software Corp.



Here is another pairs of EUR/USD examples in H4 TF and M15 TF.





So, by looking at the pictures above, do you know what the secret of Sonic R is now?

In words, Sonic R is basically trading in Hammer and Bullish engulfing bars D1 TF/H4 TF by looking for an entry M15 TF. That make Sonic R set up the highly profiable ones.

Next: I will try explain Sonic Money Management.

Sonic