

# Trader101 Back testing Spreadsheet Instructions

This process may appear by it's length to be confusing and time consuming but once you do it once you will be able to set up each week of your choosing for back testing the Trader101 system in just 10 minutes

**NOTE** One more thing be careful not to delete any of the formulas accidentally or the spreadsheet won't function properly. If a cell has no formula in it then it is obviously safe to delete anything in the cell but otherwise be careful. If you mess up the spreadsheet you can always download it again or save a hardcopy for yourself.

**1** – Download the spreadsheet Blueprint and save it in a place you will remember

**2-** Open the spreadsheet – There are 4 different sheets: Results, Chart, Data, and Import (small tabs at the bottom of the page) just click them to cycle through the different sheets.

Go to file and click “save as” “Week 15<sup>th</sup> September (for the example we are using below). This means you will always have a “blank” blueprint to test any new weeks you want. So any time you want to start a new test just open up the original “blueprint and “save as” the week you are going to back test.

The pairs you see in the Results tabs are the pairs for Interbank Fx users because that's the Platform I use.

If you use different pairs just replace them in the **FIRST (top)** table of the Results sheet. So all your Sell pairs go in the red cells and all your Buy pairs go in the green cells.

So for example if you one of your **SELL** pairs is CAD/JPY just click on any of the **RED** cells and type CAD/JPY and press enter.... Easy.

Microsoft Excel - Blue Print

File Edit View Insert Format Tools Data Window Help

Type a question for help

C3 CAD/J

	A	B	C	E	F	G	H	I	J	K	L	M	N	O	P	Q	R
1																	
2	Slot	Time/#	Pair	Open Price	Close	P/L	Slot										
3	1	0:00	CAD/J		0	0	1										
4	2		AUD/USD		0	0	2										
5	3		CHF/JPY		0	0	3										
6	4		GBP/CHF		0	0	4										
7	5		NZD/JPY		0	0	5										
8	6		EUR/CHF		0	0	6										
9	7		USD/JPY		0	0	7										
10	8		USD/CHF		0	0	8										
11	9		EUR/GBP		0	0	9										
12	10		NZD/USD		0	0	10										
13	11		AUD/JPY		0	0	11										
14	12		GBP/USD		0	0	12										
15	13		GBP/JPY		0	0	13										
16	14		EUR/JPY		0	0	14										
17	Total					0											
18	Avg					0											
19	1	1:00	EUR/USD	0	0	0	1										
20	2		AUD/USD	0	0	0	2										
21	3		CHF/JPY	0	0	0	3										
22	4		GBP/CHF	0	0	0	4										
23	5		NZD/JPY	0	0	0	5										
24	6		EUR/CHF	0	0	0	6										
25	7		USD/JPY	0	0	0	7										
26	8		USD/CHF	0	0	0	8										
27	9		EUR/GBP	0	0	0	9										
28	10		NZD/USD	0	0	0	10										
29	11		AUD/JPY	0	0	0	11										
30	12		GBP/USD	0	0	0	12										
31	13		GBP/JPY	0	0	0	13										
32	14		EUR/JPY	0	0	0	14										
33	Total					0											

Results Chart Data Import

Draw AutoShapes

Enter

start EN 5278390... Forex F... Week Se... Window... Trader1... Hedge Blue Print 11:41 PM

Just do this in the first 14 group of pairs and every other group under it will be automatically changed. Also the pair names in the “data” sheet and “import” sheet will be automatically changed. (got to love spreadsheets = )

	A	B	C	E	F	G	H	I	J	K	L	M	N	O	P	Q	R
1																	
2	Slot	Time/#	Pair	Open Price	Close	P/L	Slot										
3	1	0:00	CAD/JPY		0	0	1										
4	2		AUD/USD		0	0	2										
5	3		CHF/JPY		0	0	3										
6	4		GBP/CHF		0	0	4										
7	5		NZD/JPY		0	0	5										
8	6		EUR/CHF		0	0	6										
9	7		USD/JPY		0	0	7										
10	8		USD/CHF		0	0	8										
11	9		EUR/GBP		0	0	9										
12	10		NZD/USD		0	0	10										
13	11		AUD/JPY		0	0	11										
14	12		GBP/USD		0	0	12										
15	13		GBP/JPY		0	0	13										
16	14		EUR/JPY		0	0	14										
17	Total					0											
18	Avg					0											
19	1	1:00	CAD/JPY	0	0	0	1										
20	2		AUD/USD	0	0	0	2										
21	3		CHF/JPY	0	0	0	3										
22	4		GBP/CHF	0	0	0	4										
23	5		NZD/JPY	0	0	0	5										
24	6		EUR/CHF	0	0	0	6										
25	7		USD/JPY	0	0	0	7										
26	8		USD/CHF	0	0	0	8										
27	9		EUR/GBP	0	0	0	9										
28	10		NZD/USD	0	0	0	10										
29	11		AUD/JPY	0	0	0	11										
30	12		GBP/USD	0	0	0	12										
31	13		GBP/JPY	0	0	0	13										
32	14		EUR/JPY	0	0	0	14										
33	Total					0											

(notice Above in the second “group” the CAD/JPY was automatically entered because I changed it in the first group)

So now our pairs are sorted we want to decide on which week we want to back test.....

**3** – Lets say we want to test the week of the 15<sup>th</sup> September 2008... First we need to enter the weekly open price of all our pairs.

So go to the daily chart of all 14 pairs and manually enter the daily open price of the 15<sup>th</sup> September 2008 in the column that says “open price”. do this for each respective pair.



	A	B	C	E	F	G	H
	Slot	Time/#	Pair	Open Price	Close	P/L	Slot
3	1	0:00	EUR/USD	14317	0	14317	1
4	2		AUD/USD	0	0	0	2
5	3		CHF/JPY	0	0	0	3
6	4		GBP/CHF	0	0	0	4
7	5		NZD/JPY	0	0	0	5
8	6		EUR/CHF	0	0	0	6
9	7		USD/JPY	0	0	0	7
10	8		USD/CHF	0	0	0	8
11	9		EUR/GBP	0	0	0	9
12	10		NZD/USD	0	0	0	10
13	11		AUD/JPY	0	0	0	11
14	12		GBP/USD	0	0	0	12
15	13		GBP/JPY	0	0	0	13
16	14		EUR/JPY	0	0	0	14
17	Total					14317	
18	Avg					1023	
19	1	1:00	EUR/USD	14317	0	14317	1
20	2		AUD/USD	0	0	0	2
21	3		CHF/JPY	0	0	0	3
22	4		GBP/CHF	0	0	0	4
23	5		NZD/JPY	0	0	0	5
24	6		EUR/CHF	0	0	0	6
25	7		USD/JPY	0	0	0	7
26	8		USD/CHF	0	0	0	8
27	9		EUR/GBP	0	0	0	9
28	10		NZD/USD	0	0	0	10
29	11		AUD/JPY	0	0	0	11
30	12		GBP/USD	0	0	0	12
31	13		GBP/JPY	0	0	0	13
32	14		EUR/JPY	0	0	0	14
33	Total					14317	

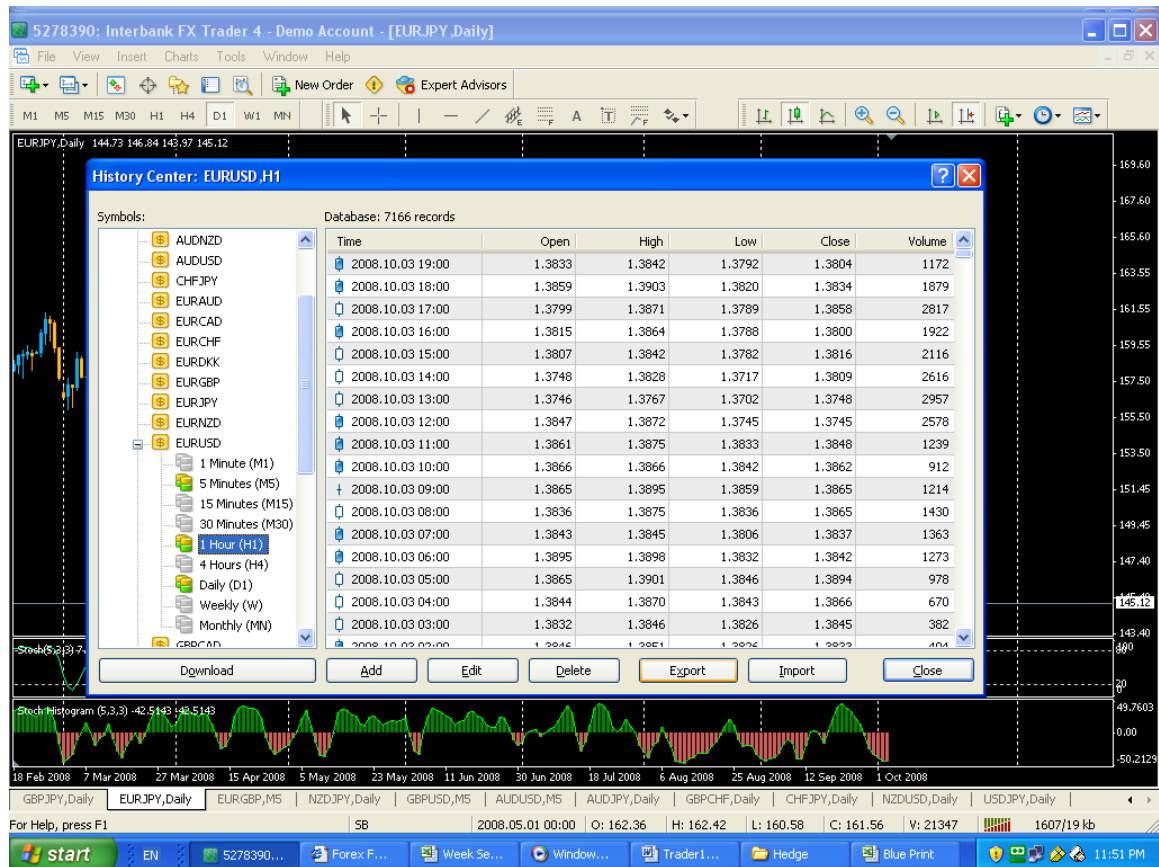
Like before once you enter it once every group under the first one will automatically fill in this info.

**IMPORTANT** Also remember to enter the number as a whole number so in the example above the EUR/USD open price was 1.4317 so I enter the number in the spreadsheet as: 14317

Do this for each respective pair.

So now we have our weekly open prices entered the next step is to fill in the data we want to back test. Do to this we need to export the data we need form the History Centre in our trading platform....

4 – Go into your Mt4 charts press “F2” The history centre should pop up (otherwise just go to “tools” and click “History Centre”)

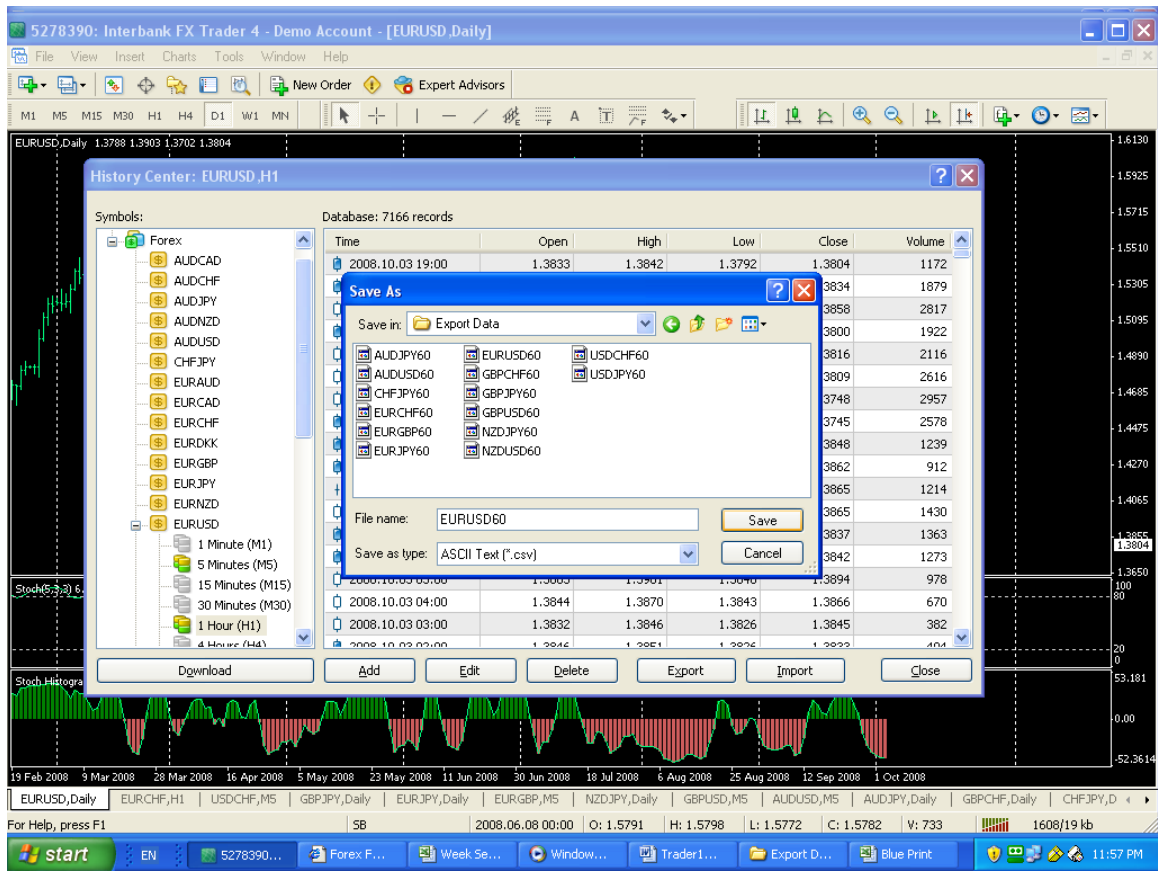


We now need to find each of the 14 pairs we’re using in the left hand column and double click on it. You can choose what timeframe you want to use but I personally use the 1 hour data.

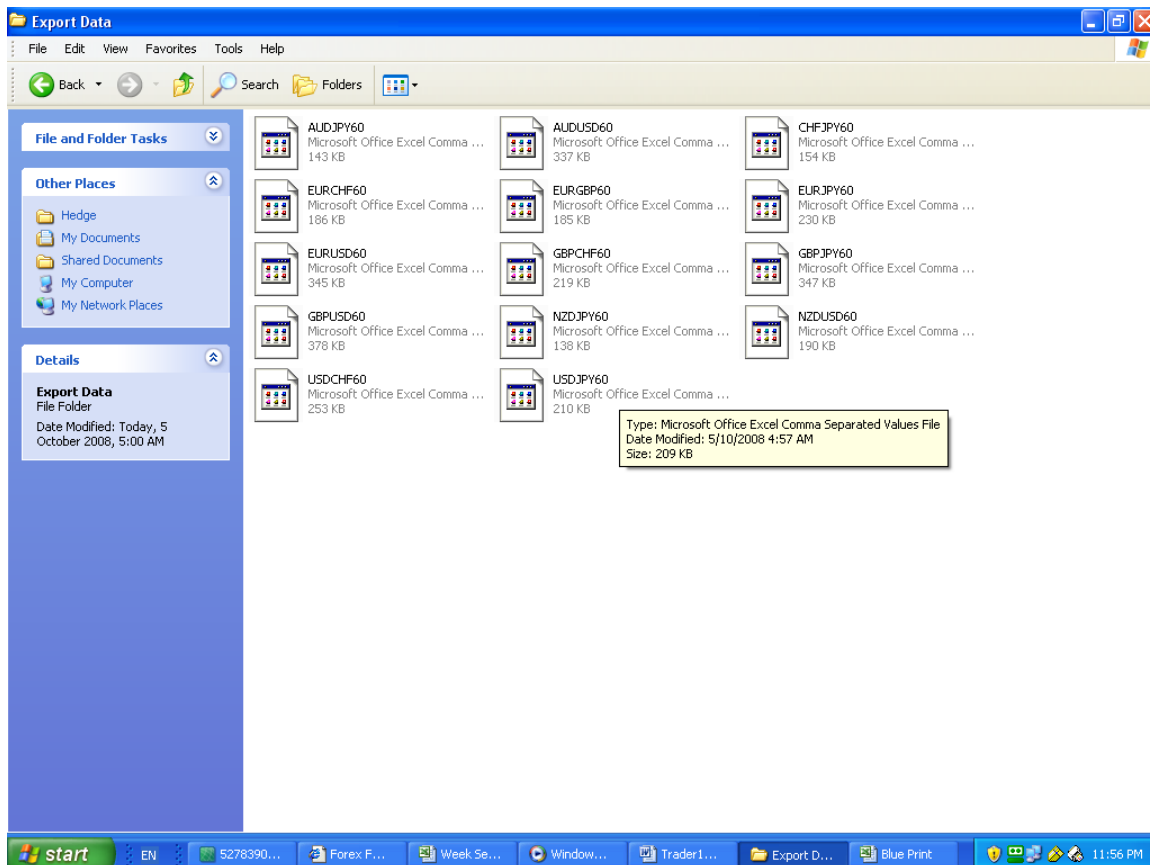
So for demonstration purposes we will stick with 1 hour data.

So simply double click on each pair and then double click on “1 hour” – This will bring up all the Hourly Open High Low and Close data of the respective pair for the past few years.

We want to Export this into a folder so click the “Export” tab and when it asks where you want to save it create a new folder called “Export” and save each pairs 1 hour data in there.



5 We should now have a folder called “Export” with 14 different files (one for each pair) of 1 hour data.



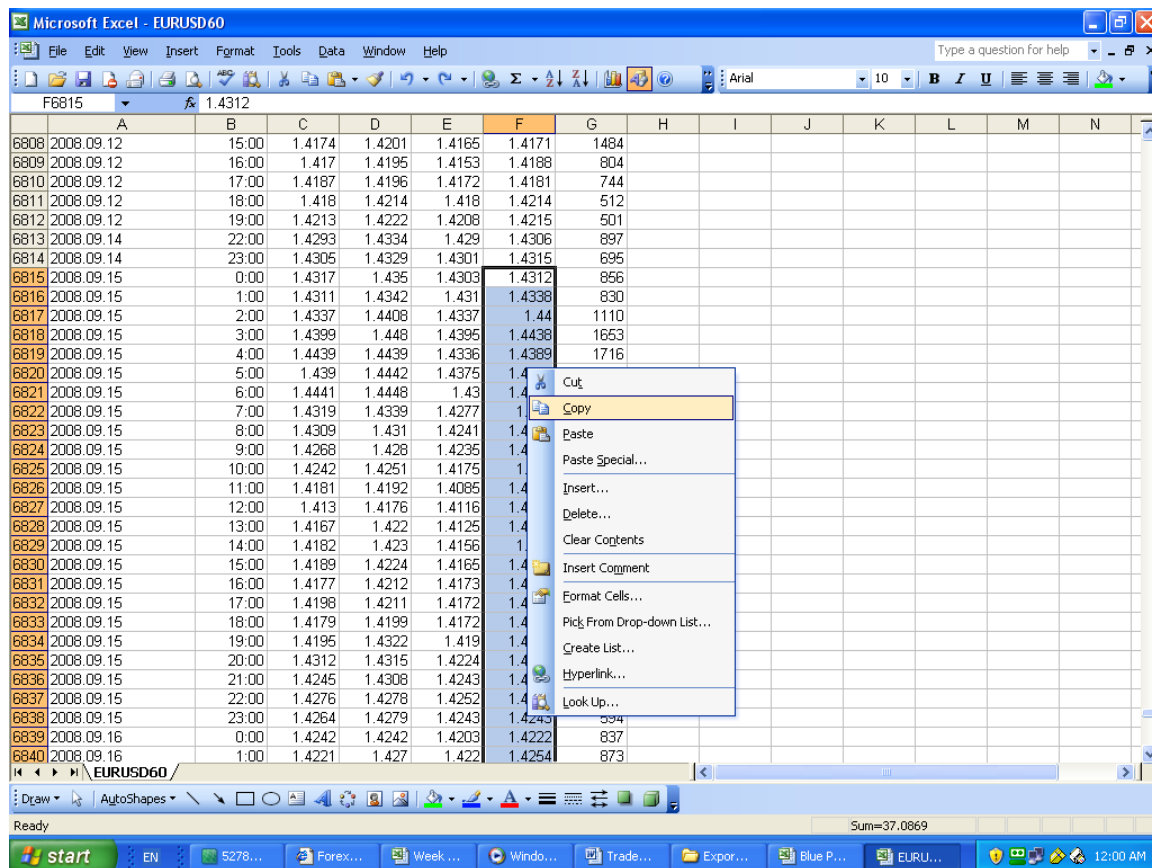
What we want to do now is grab the data we want and put it into our back testing spreadsheet. So go ahead and open up the “EUR/USD” exported file.

Scroll down the page and find the date we are interested in which is the 15<sup>th</sup> of September 2008 to the 19<sup>th</sup> September 2008.

The only info we want is the hourly “close” this is in the **second** column from the **right**.

So click on the hourly close info for the 15<sup>th</sup> of September 2008 from 00:00 and drag it down to the 19<sup>th</sup> September 2008 23:00 (or whatever the last time is for the 19<sup>th</sup>) **Copy** and **Paste** this data into the EUR/USD column of the **IMPORT** sheet of the back testing spreadsheet.





## Very important:

Don't confuse the **Data** sheet with the **Import** Sheet. The data sheet we don't need to touch it's simply there to convert all the decimal numbers into whole numbers which it will then automatically feed into the results table. Paste the data from the history centre into the **"IMPORT"** sheet

Microsoft Excel - Blue Print

File Edit View Insert Format Tools Data Window Help

Type a question for help

B2 1.4312

	A	B	C	D	E	F	G	H	I	J	K	L	M	N	O
1		EUR/USD	AUD/USD	CHF/JPY	GBP/CHF	NZD/JPY	EUR/CHF	USD/JPY	USD/CHF	EUR/GBP	NZD/USD	AUD/JPY	GBP/USD	GBP/JPY	EUR/JPY
2	0:00	1.4312													
3	1:00	1.4338													
4	2:00	1.44													
5	3:00	1.4438													
6	4:00	1.4389													
7	5:00	1.4442													
8	6:00	1.4318													
9	7:00	1.431													
10	8:00	1.4267													
11	9:00	1.4241													
12	10:00	1.418													
13	11:00	1.4129													
14	12:00	1.4168													
15	13:00	1.4183													
16	14:00	1.419													
17	15:00	1.4178													
18	16:00	1.4199													
19	17:00	1.4178													
20	18:00	1.4196													
21	19:00	1.4313													
22	20:00	1.4242													
23	21:00	1.4274													
24	22:00	1.4265													
25	23:00	1.4243													
26	0:00	1.4222													
27	1:00	1.4254													
28	2:00	1.4224													
29	3:00	1.4189													
30	4:00	1.4238													
31	5:00	1.4259													
32	6:00	1.4246													
33	7:00	1.424													

Results Chart Data Import

Ready Sum=165.5271

start EN S278... Forex... Week... Window... Trade... Export... Blue P... EURU... 12:01 AM

6 – Repeat this process for all 14 pairs so all columns in the Import sheet are filled.

Microsoft Excel - Week September 15

File Edit View Insert Format Tools Data Window Help

Type a question for help

B2 =ImportB2\*10000

	A	B	C	D	E	F	G	H	I	J	K	L	M	N	O
1		EUR/USD	AUD/USD	CHF/JPY	GBP/CHF	NZD/JPY	EUR/CHF	USD/JPY	USD/CHF	EUR/GBP	NZD/USD	AUD/JPY	GBP/USD	GBP/JPY	EUR/JPY
2	0:00	14312	8220	9485	20178	7118	16042	10634	11208	7949	6634	8742	18002	19145	15222
3	1:00	14338	8214	9504	20132	7098	16017	10619	11169	7954	6686	8723	18023	19139	15227
4	2:00	14400	8235	9489	20103	7074	16025	10562	11126	7968	6699	8698	18066	19084	15211
5	3:00	14438	8219	9502	20017	7070	16015	10544	11092	7999	6705	8666	18045	19026	15224
6	4:00	14389	8214	9502	20088	7078	16028	10587	11138	7977	6687	8697	18035	19094	15235
7	5:00	14442	8255	9526	20082	7086	16010	10563	11084	7971	6709	8720	18116	19136	15256
8	6:00	14318	8176	9477	20129	7008	15954	10562	11140	7924	6632	8635	18066	19083	15125
9	7:00	14310	8185	9449	20054	6993	15922	10516	11124	7937	6651	8608	18025	18955	15050
10	8:00	14267	8133	9395	20006	6920	15885	10463	11132	7937	6616	8509	17970	18803	14929
11	9:00	14241	8102	9434	20015	6951	15881	10524	11151	7933	6605	8526	17948	18888	14987
12	10:00	14180	8060	9406	20034	6917	15875	10532	11193	7922	6569	8488	17900	18850	14936
13	11:00	14129	8033	9381	20020	6924	15896	10556	11249	7938	6561	8480	17795	18795	14916
14	12:00	14168	8097	9410	20084	6988	15893	10559	11216	7910	6619	8548	17905	18906	14961
15	13:00	14183	8070	9415	20057	6952	15907	10563	11215	7929	6583	8525	17883	18889	14983
16	14:00	14190	8098	9475	20095	7020	15903	10623	11206	7912	6609	8601	17931	19048	15074
17	15:00	14178	8082	9438	20009	6969	15863	10563	11187	7926	6599	8537	17884	18891	14976
18	16:00	14199	8066	9459	20003	6974	15879	10581	11182	7936	6592	8535	17887	18926	15026
19	17:00	14178	8044	9436	20013	6928	15867	10564	11190	7926	6560	8498	17884	18891	14978
20	18:00	14196	8043	9455	20026	6942	15883	10581	11188	7929	6562	8512	17898	18939	15022
21	19:00	14313	8079	9465	19963	6924	15858	10488	11077	7941	6605	8473	18022	18900	15015
22	20:00	14242	8065	9380	20076	6896	15890	10465	11156	7914	6591	8440	17995	18833	14910
23	21:00	14274	8055	9371	20022	6870	15889	10435	11131	7934	6585	8406	17987	18769	14901
24	22:00	14265	7968	9376	19960	6821	15860	10427	11116	7943	6544	8308	17954	18720	14872
25	23:00	14243	7975	9359	19975	6824	15856	10422	11130	7937	6551	8311	17944	18701	14845
26	0:00	14222	7934	9357	19969	6797	15850	10432	11144	7936	6517	8277	17915	18691	14838
27	1:00	14254	7942	9375	19976	6810	15843	10424	11114	7930	6534	8278	17971	18733	14859
28	2:00	14224	7897	9364	19993	6794	15846	10435	11139	7924	6512	8240	17946	18728	14845
29	3:00	14189	7874	9345	19972	6773	15830	10429	11156	7924	6496	8212	17903	18670	14800
30	4:00	14238	7896	9384	19957	6791	15842	10443	11125	7935	6504	8246	17937	18733	14871
31	5:00	14259	7902	9405	19918	6789	15810	10430	11086	7935	6510	8242	17966	18738	14874
32	6:00	14246	7893	9356	19948	6755	15828	10399	11109	7932	6498	8207	17956	18671	14815
33	7:00	14240	7870	9372	19834	6738	15754	10371	11062	7941	6497	8162	17929	18593	14770

Results Chart Data Import

Ready

start EN S278... Forex... Week... Window... Trade... Export... Blue P... EURU... 12:02 AM

You will notice now in the results column all the groups have been filled in with the info we need. (Magic!)

Microsoft Excel - Week September 15

File Edit View Insert Format Tools Data Window Help

Type a question for help

C3 GBP/USD

	A	B	C	E	F	G	H	I	J	K	L	M	N	O	P	Q	R	S	T	U	V	W	X
	Slot	Time/£	Pair	Open Price	Close	P/L	Slot	Data															
1																							
2	1	0:00	GBP/USD	17980	18002	22	1																
3	2		GBP/JPY	19124	19145	21	2																
4	3		AUD/JPY	8723	8742	19	3																
5	4		NZD/USD	6677	6694	17	4																
6	5		USD/CHF	11193	11208	15	5																
7	6		CHF/JPY	9498	9485	13	6																
8	7		EUR/USD	14317	14312	5	7																
9	8		USD/JPY	10635	10634	1	8																
10	9		EUR/JPY	15227	15222	-5	9																
11	10		EUR/GBP	7959	7949	-10	10																
12	11		EUR/CHF	16028	16042	-14	11																
13	12		NZD/JPY	7101	7118	-17	12																
14	13		AUD/USD	8202	8220	-18	13																
15	14		GBP/CHF	20130	20178	-48	14																
16	Total					1																	
17	Avg					0																	
18	1	1:00	GBP/USD	17980	18023	43	1																
19	2		USD/JPY	19124	10619	16	2																
20	3		GBP/JPY	8723	19139	15	3																
21	4		EUR/CHF	6677	16017	11	4																
22	5		NZD/USD	11193	6686	9	5																
23	6		NZD/JPY	9498	7098	3	6																
24	7		EUR/JPY	14317	15227	0	7																
25	8		AUD/JPY	10635	8723	0	8																
26	9		GBP/CHF	15227	20132	-2	9																
27	10		EUR/GBP	7959	7954	-5	10																
28	11		CHF/JPY	16028	9504	-6	11																
29	12		AUD/USD	7101	8214	-12	12																
30	13		EUR/USD	8202	14338	-21	13																
31	14		USD/CHF	20130	11169	-24	14																
32	Total					27																	
33	Avg					2																	
34	1	2:00	GBP/USD	17980	18066	86	1																
35	2		USD/JPY	19124	10562	73	2																
36	3		NZD/JPY	8723	7074	27	3																
37	4		GBP/CHF	6677	20103	27	4																
38	5		NZD/USD	11193	6699	22	5																
39	6		CHF/JPY	9498	9489	9	6																
40	7		EUR/GBP	14317	7968	9	7																
41	8		EUR/CHF	10635	16025	3	8																
42	9		EUR/JPY	15227	15211	-16	9																
43																							

Results Chart Import Data

Draw AutoShapes

Ready

start EN 5278... Forex... Week... Windo... Trade... Expor... Blue P... EURU... 12:03

7- The last thing we need to do is to sort our pairs in a descending order – this is where we can see the pairs jumping around for the strategy hour by hour and can then refer to our charts and see the reaction of the currencies at the times we are interested in..

So to do this we need to disable the spreadsheet formulas...

Click on the letter “A” at the top of the first column. This should select all the column.

Slot	Time/#	Pair	Open Price	Close	P/L	Slot	Data
1	0:00	GBP/USD	17980	18002	22	1	
2	0:00	GBP/JPY	19124	19145	21	2	
3	0:00	AUD/JPY	8723	8742	19	3	
4	0:00	NZD/USD	6677	6694	17	4	
5	0:00	USD/CHF	11193	11208	15	5	
6	0:00	CHF/JPY	9498	9485	13	6	
7	0:00	EUR/USD	14317	14312	5	7	
8	0:00	USD/JPY	10635	10634	1	8	
9	0:00	EUR/JPY	15227	15222	-5	9	
10	0:00	EUR/GBP	7959	7949	-10	10	
11	0:00	EUR/CHF	16028	16042	-14	11	
12	0:00	NZD/JPY	7101	7118	-17	12	
13	0:00	AUD/USD	8202	8220	-18	13	
14	0:00	GBP/CHF	20130	20178	-48	14	
Total					1		
Avg					0		
1	1:00	GBP/USD	17980	18023	43	1	
2	1:00	USD/JPY	19124	10619	16	2	
3	1:00	GBP/JPY	8723	19139	15	3	
4	1:00	EUR/CHF	6677	16017	11	4	
5	1:00	NZD/USD	11193	6686	9	5	
6	1:00	NZD/JPY	9498	7098	3	6	
7	1:00	EUR/JPY	14317	15227	0	7	
8	1:00	AUD/JPY	10635	8723	0	8	
9	1:00	GBP/CHF	15227	20132	-2	9	
10	1:00	EUR/GBP	7959	7954	-5	10	
11	1:00	CHF/JPY	16028	9504	-6	11	
12	1:00	AUD/USD	7101	8214	-12	12	
13	1:00	EUR/USD	8202	14338	-21	13	
14	1:00	USD/CHF	20130	11169	-24	14	
Total					27		

Now hold down the “Shift” key and click the letter “H” – Now every thing should be selected....

Microsoft Excel - Week September 15																	
File Edit View Insert Format Tools Data Window Help																	
Type a question for help																	
A1																	
	A	B	C	E	F	G	H	I	J	K	L	M	N	O	P	Q	R
1																	
2	Slot	Time/#	Pair	Open Price	Close	P/L	Slot	Data									
3	1	0:00	GBP/USD	17980	18002	22	1										
4	2		GBP/JPY	19124	19145	21	2										
5	3		AUD/JPY	8723	8742	19	3										
6	4		NZD/USD	6677	6694	17	4										
7	5		USD/CHF	11193	11208	15	5										
8	6		CHF/JPY	9498	9485	13	6										
9	7		EUR/USD	14317	14312	5	7										
10	8		USD/JPY	10635	10634	1	8										
11	9		EUR/JPY	15227	15222	-5	9										
12	10		EUR/GBP	7959	7949	-10	10										
13	11		EUR/CHF	16028	16042	-14	11										
14	12		NZD/JPY	7101	7118	-17	12										
15	13		AUD/USD	8202	8220	-18	13										
16	14		GBP/CHF	20130	20178	-48	14										
17	Total					1											
18	Avg					0											
19	1	1:00	GBP/USD	17980	18023	43	1										
20	2		USD/JPY	19124	10619	16	2										
21	3		GBP/JPY	8723	19139	15	3										
22	4		EUR/CHF	6677	16017	11	4										
23	5		NZD/USD	11193	6686	9	5										
24	6		NZD/JPY	9498	7098	3	6										
25	7		EUR/JPY	14317	15227	0	7										
26	8		AUD/JPY	10635	8723	0	8										
27	9		GBP/CHF	15227	20132	-2	9										
28	10		EUR/GBP	7959	7954	-5	10										
29	11		CHF/JPY	16028	9504	-6	11										
30	12		AUD/USD	7101	8214	-12	12										
31	13		EUR/USD	8202	14338	-21	13										
32	14		USD/CHF	20130	11169	-24	14										
33	Total					27											
Results Chart Import Data																	
Draw AutoShapes																	
Ready																	
Sum=39606501.27																	
start EN \$278... Forex... Week... Windo... Trade... Expor... Blue P... EURU... 12:08 AM																	

Now go to edit and select “copy” and go to edit again and select “paste special”

Microsoft Excel - Week September 15

File Edit View Insert Format Tools Data Window Help

Undo Paste Ctrl+Z Redo Zoom Ctrl+Y Cut Ctrl+X Copy Ctrl+C Paste Ctrl+V Paste Special... Fill Delete Delete Sheet Replace... Ctrl+H

		C	E	F	G	H	I	J	K	L	M	N	O	P	Q	R
		Pair	Open Price	Close	P/L	Slot	Data									
1		P/USD	17980	18002	22	1										
2		IP/JPY	19124	19145	21	2										
3		D/JPY	8723	8742	19	3										
4		D/USD	6677	6694	17	4										
5		D/CHF	11193	11208	15	5										
6		IF/JPY	9498	9485	13	6										
7		R/USD	14317	14312	5	7										
8		D/JPY	10635	10634	1	8										
9		R/JPY	15227	15222	-5	9										
10		EUR/GBP	7959	7949	-10	10										
11		EUR/CHF	16028	16042	-14	11										
12		NZD/JPY	7101	7118	-17	12										
13		AUD/USD	8202	8220	-18	13										
14		GBP/CHF	20130	20178	-48	14										
15	Total					1										
16	Avg					0										
17	1:00	GBP/USD	17980	18023	43	1										
18	2	USD/JPY	19124	10619	16	2										
19	3	GBP/JPY	8723	19139	15	3										
20	4	EUR/CHF	6677	16017	11	4										
21	5	NZD/USD	11193	6686	9	5										
22	6	NZD/JPY	9498	7098	3	6										
23	7	EUR/JPY	14317	15227	0	7										
24	8	AUD/JPY	10635	8723	0	8										
25	9	GBP/CHF	15227	20132	-2	9										
26	10	EUR/GBP	7959	7954	-5	10										
27	11	CHF/JPY	16028	9504	-6	11										
28	12	AUD/USD	7101	8214	-12	12										
29	13	EUR/USD	8202	14338	-21	13										
30	14	USD/CHF	20130	11169	-24	14										
31	Total					27										

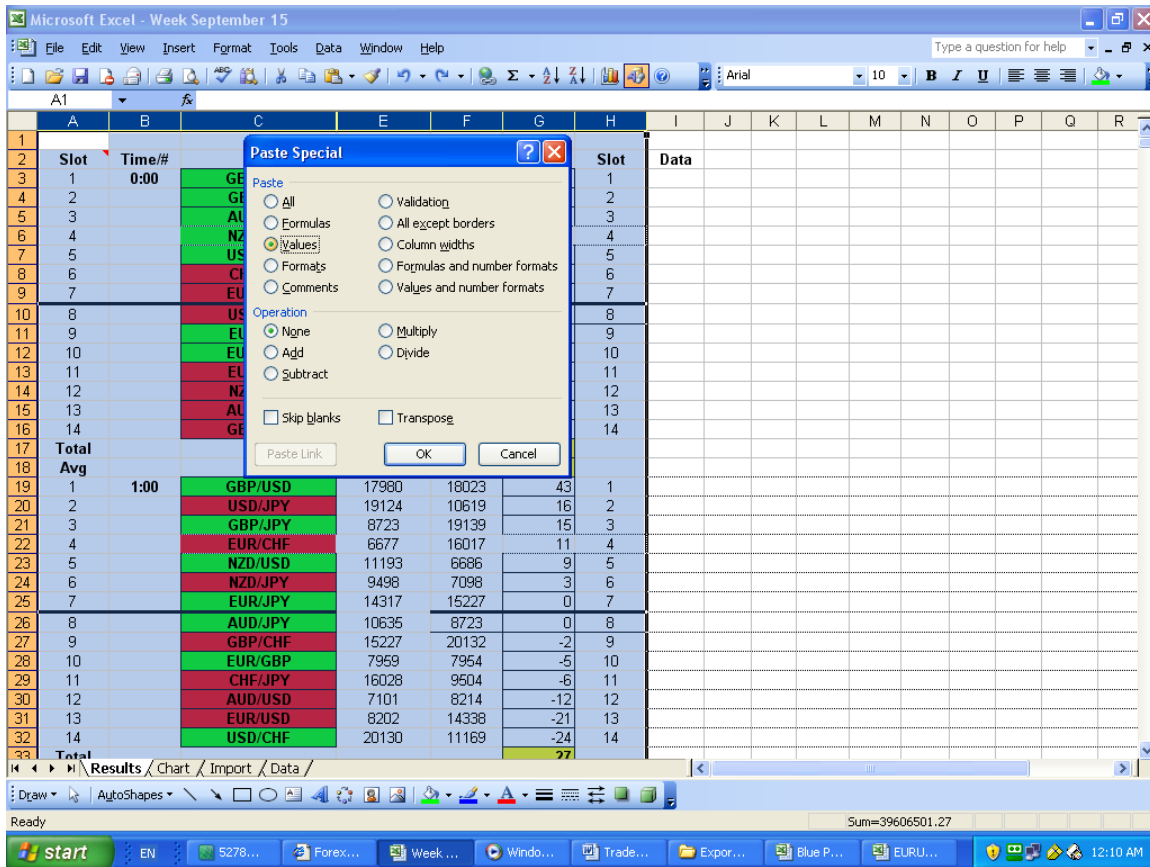
Results Chart Import Data

Draw AutoShapes

Ready Sum=39606501.27

start EN 5278... Forex... Week... Windo... Trade... Expor... Blue P... EURU... 12:09 AM

Click the tab that says “**Values**” and then click “OK”



Now all formulas are disabled and we are free to sort the groups from highest to lowest numbers and track the currencies movement of the week of the 15<sup>th</sup> September.

Cool.....

So lastly all we do is go through each group one by one and select columns “C” to “G”

Then go to the menu at the top and click on “**Data**” then “**Sort**”

Microsoft Excel - Week September 15

File Edit View Insert Format Tools Data Window Help

Type a question

Draw AutoShapes

C3 USD/JPY

	A	B	C	E	F	G	H	I	J	K	L	M	N	O
1														
2	Slot	Time/#	Pair	Open Price	Close	P/L	Slot	Data						
3	1	0:00	USD/JPY	10635	10634	1	1							
4	2		USD/CHF	11193	11208	15	2							
5	3		NZD/USD	6677	6694	17	3							
6	4		NZD/JPY	7101	7118	-17	4							
7	5		GBP/USD	17980	18002	22	5							
8	6		GBP/JPY	19124	19145	21	6							
9	7		GBP/CHF	20130	20178	-48	7							
10	8		EUR/USD	14317	14312	5	8							
11	9		EUR/JPY	15227	15222	-5	9							
12	10		EUR/GBP	7959	7949	-10	10							
13	11		EUR/CHF	16028	16042	-14	11							
14	12		CHF/JPY	9498	9485	13	12							
15	13		AUD/USD	8202	8220	-18	13							
16	14		AUD/JPY	8723	8742	19	14							
17	Total					1								
18	Avg					0								
19	1	1:00	GBP/USD	10635	18023	43	1							
20	2		USD/JPY	11193	10619	16	2							
21	3		GBP/JPY	6677	19139	15	3							
22	4		EUR/CHF	7101	16017	11	4							
23	5		NZD/USD	17980	6686	9	5							
24	6		NZD/JPY	19124	7098	3	6							
25	7		EUR/JPY	20130	15227	0	7							
26	8		AUD/JPY	14317	8723	0	8							
27	9		GBP/CHF	15227	20132	-2	9							
28	10		EUR/GBP	7959	7954	-5	10							
29	11		CHF/JPY	16028	9504	-6	11							
30	12		AUD/USD	9498	8214	-12	12							
31	13		EUR/USD	8202	14338	-21	13							
32	14		USD/CHF	8723	11169	-24	14							
33	Total					27								

Results Chart Import Data

Draw AutoShapes

Ready Sum=345746

start EN 5278... Forex... Week... Windo... Trade... Expor... Blue P... EURU...





In the “Sort by box select “Column G” – Check the box that says “No header row” and make sure “Descending is Selected

The screenshot shows the Microsoft Excel interface with a spreadsheet titled "Week September 15". The spreadsheet contains two tables. The first table, starting at row 2, has columns "Slot", "Time/#", and "P". The second table, starting at row 19, has columns "Slot", "Data", and "Time/#". A "Sort" dialog box is open, showing "Column G" selected for sorting in descending order, with "No header row" checked. The status bar at the bottom shows "Ready" and the taskbar includes icons for "start", "EN", "5278...", "Forex...", "Week ...", "Windo...", "Trade...", "Expor...", and "Blue".

Slot	Time/#	P
1	0:00	USD
2		USD
3		NZD
4		NZD
5		GBP
6		GBP
7		GBP
8		EUR
9		EUR
10		EUR
11		EUR
12		CHF
13		AUD
14		AUD
15		
16		
17	Total	
18	Avg	
19	1	1:00
20	2	
21	3	
22	4	
23	5	
24	6	
25	7	
26	8	
27	9	
28	10	
29	11	
30	12	
31	13	
32	14	
33	Total	

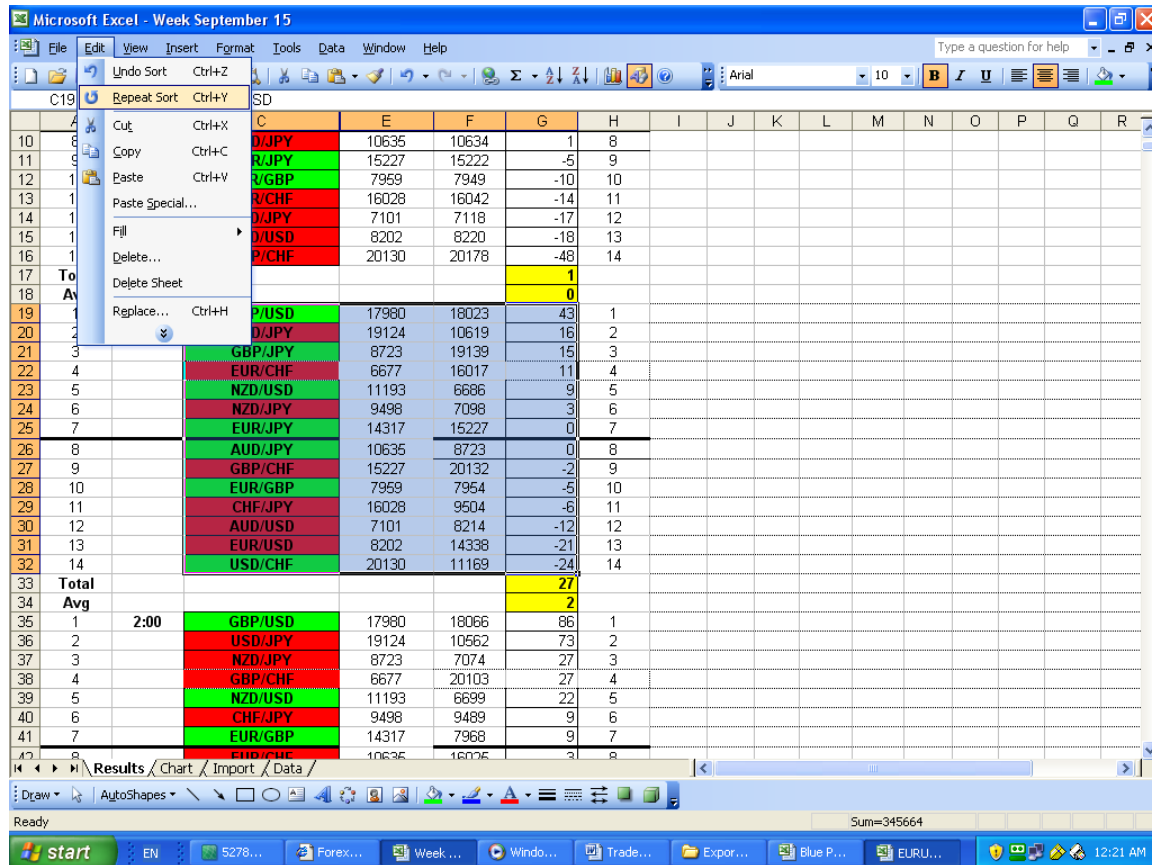
Slot	Data	Time/#
1		
2		
3		
4		
5		
6		
7		
8		
9		
10		
11		
12		
13		
14		
15		
16		
17		
18		
19	GBP/USD	10635
20	USD/JPY	11193
21	GBP/JPY	6677
22	EUR/CHF	7101
23	NZD/USD	17980
24	NZD/JPY	19124
25	EUR/JPY	20130
26	AUD/JPY	14317
27	GBP/CHF	15227
28	EUR/GBP	7959
29	CHF/JPY	16028
30	AUD/USD	9498
31	EUR/USD	8202
32	USD/CHF	8723
33	Total	27

Click “Ok” and finally we are ready to roll.....

Microsoft Excel - Week September 15																	
File Edit View Insert Format Tools Data Window Help																	
Type a question for help																	
C3 GBP/USD																	
	A	B	C	E	F	G	H	I	J	K	L	M	N	O	P	Q	R
1																	
2	Slot	Time/#	Pair	Open Price	Close	P/L	Slot	Data									
3	1	0:00	GBP/USD	17980	18002	22	1										
4	2		GBP/JPY	19124	19145	21	2										
5	3		AUD/JPY	8723	8742	19	3										
6	4		NZD/USD	6677	6694	17	4										
7	5		USD/CHF	11193	11208	15	5										
8	6		CHF/JPY	9498	9485	13	6										
9	7		EUR/USD	14317	14312	5	7										
10	8		USD/JPY	10635	10634	1	8										
11	9		EUR/JPY	15227	15222	-5	9										
12	10		EUR/GBP	7959	7949	-10	10										
13	11		EUR/CHF	16028	16042	-14	11										
14	12		NZD/JPY	7101	7118	-17	12										
15	13		AUD/USD	8202	8220	-18	13										
16	14		GBP/CHF	20130	20178	-48	14										
17	Total					1											
18	Avg					0											
19	1	1:00	GBP/USD	17980	18023	43	1										
20	2		USD/JPY	19124	10619	16	2										
21	3		GBP/JPY	8723	19139	15	3										
22	4		EUR/CHF	6677	16017	11	4										
23	5		NZD/USD	11193	6686	9	5										
24	6		NZD/JPY	9498	7098	3	6										
25	7		EUR/JPY	14317	15227	0	7										
26	8		AUD/JPY	10635	8723	0	8										
27	9		GBP/CHF	15227	20132	-2	9										
28	10		EUR/GBP	7959	7954	-5	10										
29	11		CHF/JPY	16028	9504	-6	11										
30	12		AUD/USD	7101	8214	-12	12										
31	13		EUR/USD	8202	14338	-21	13										
32	14		USD/CHF	20130	11169	-24	14										
33	Total					27											

The Pairs will be sorted from highest to lowest pi value like in the picture above...

To repeat this process just select the each group of 14 individually and you can just press “Ctr + y” to repeat the sort!. (Or go to the edit menu and select “Repeat Sort”)



So that's it. I also included a chart page which is interesting and shows the collective pairs on one chart what you do with that is up to you and if you find anything interesting I would love to hear about it.

You can email me at [sbowes@ozemail.com.au](mailto:sbowes@ozemail.com.au)

You can obviously change the way this has been shown here like for example maybe using the Daily open price and then 5 or 15 minute data but that of course is up to you.

I hope this all made sense I tried to be as thorough as possible and WOW wasn't expecting this to be 21 pages long. Anyway hope this serves you well

Good Trading  
CindyXXXX