

Trade data

Pair GBP/CHF	Trade Type short	Trade Status placed pending	Avg risk: 18.9 planned profit: 37.5 Risk reward ratio 1.98 Max quantity 1.2 Total quantity 1.2 Residual quantity 0.0
Pip Value 0.82	Spread 2.5	Time Frame 2h	
Placed Date 27 Apr 2014 at 23:29			

Orders

	Order	Order Type	Price	Amount (minilots)	Filled (date)
Entry orders avg: 1.48845 tot: 1.2	sell	limit	1.48845	1.2	
Entry orders avg: 1.49034 tot: 1.2	buy	stop_market	1.49034	1.2	
Entry orders avg: 1.4847 tot: 1.2	buy	limit	1.48656	0.6	
	buy	limit	1.48284	0.6	

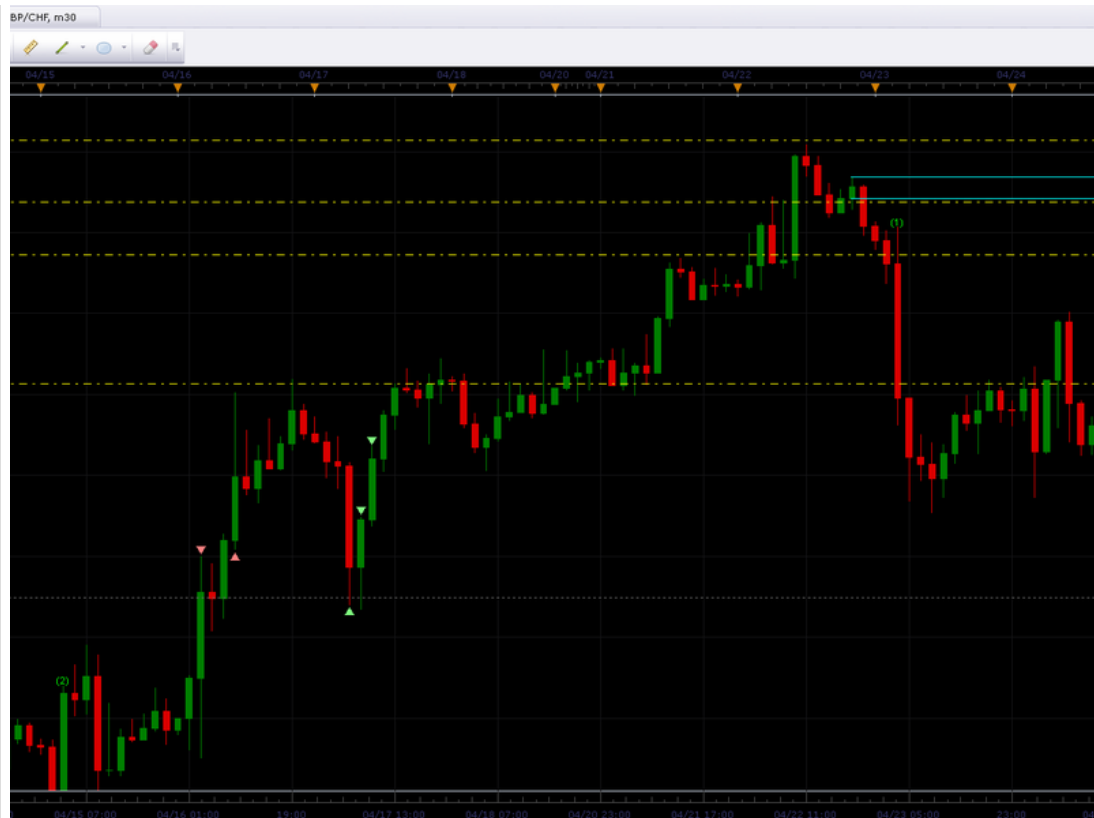
Comments

on April 27, 2014 23:33 giulio noted:

DAILY chart has just violated the last low, so it's likely to start a downtrend.

on the 2H the price has violated two demand levels, so on the 2H it's already in downtrend.

the level chosen scores well, so I'm taking it.



Trade field	Old Value	New Value
Trade created	N/A	27 Apr 2014 at 23:29

on April 27, 2014 23:34 giulio noted:

updating size with max qty

Trade field	Old Value	New Value
Total minilots	1.6	1.2
Entry quantity	1.6	1.2
Stop quantity	1.6	1.2
Profit quantity	1.6	1.2

Entryorder changed	limit sell 1.6 at 1.48845	limit sell 1.2 at 1.48845
Stoporder changed	stop_market buy 1.6 at 1.49034	stop_market buy 1.2 at 1.49034
Profitorder changed	limit buy 0.8 at 1.48656	limit buy 0.6 at 1.48656
Profitorder changed	limit buy 0.8 at 1.48284	limit buy 0.6 at 1.48284