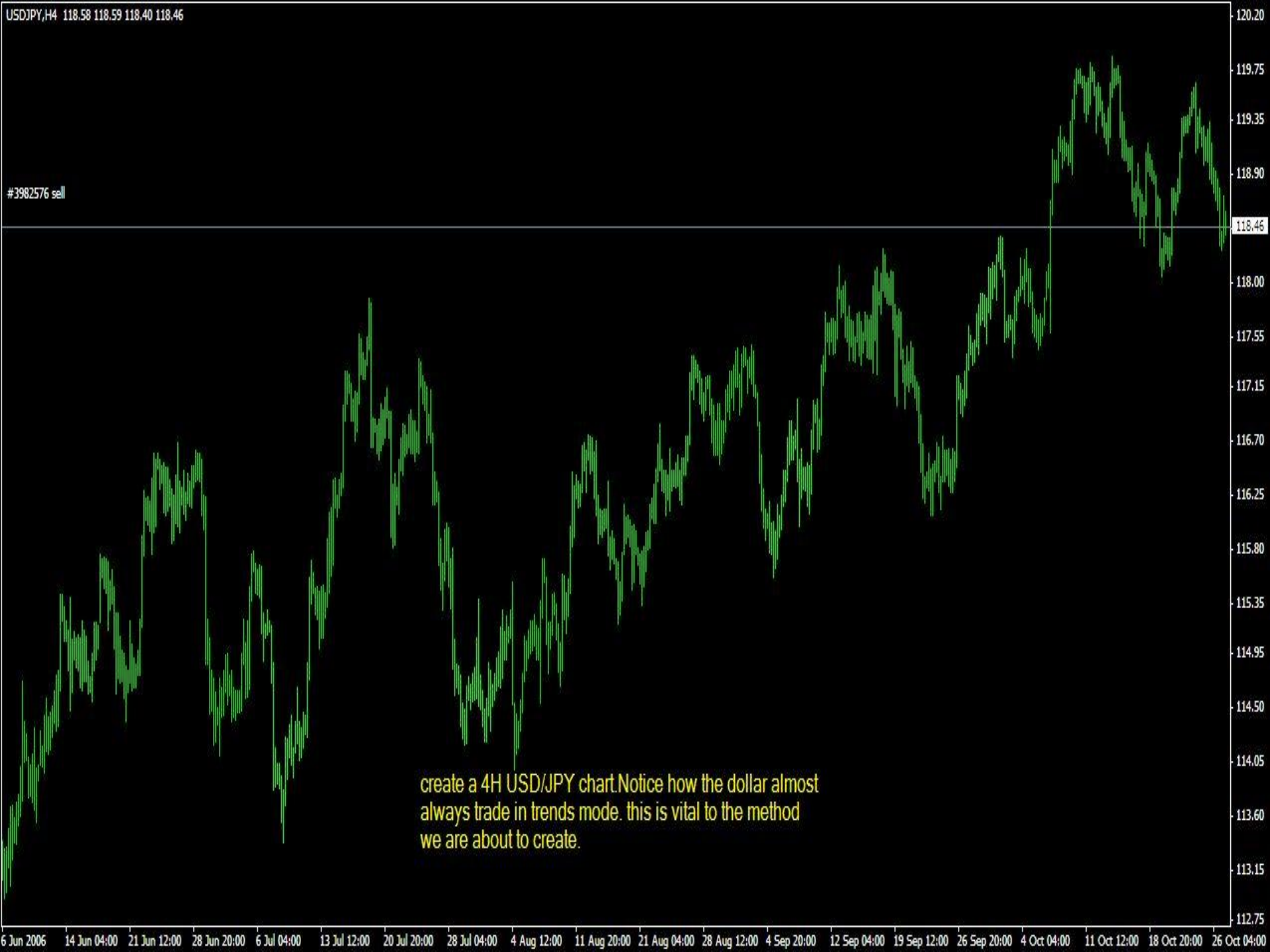


# USD/JPY 4 DUMMIES

THIS METHOD IS BEST EXPLAINED IF TRADED WITH THE DOLLAR. YOU COULD TRADE IT WITH OTHER PAIRS BUT THEY ARE NOT AS EFFECTIVE AS WITH THE USD/JPY. I THINK IS A GREAT METHOD OF TRADING THE PAIR. IS VERY EASY TO TRADE AND HIGHTLY PROFITABLE. LIKE ALL THE OTHER METHOD YOU SHOULD PRACTICE BEFORE YOU GO LIVE... IT IS ALSO IMPORTANT TO ADMINISTER ALL THE DICIPLINE OF A PROFFESIONAL TRADER THAT YOU ARE WILLING TO BECOME.

USDJPY,H4 118.58 118.59 118.40 118.46

#3982576 sell



create a 4H USD/JPY chart. Notice how the dollar almost always trade in trends mode. this is vital to the method we are about to create.

*Next insert a 3 EMA linear weight. closed.  
Insert a 9 EMA. Shift 2. Weight closed HLCC/4.  
Insert a 9 EMA closed.*

*These MAs are very helfull when trading a trend. I personally dont like to use them. but since im a trend trader I have to use them. Dont get me wrong they are awsome when it come to let you know if you still in the trend or not.*

#3982576 sell



*Add Williams and stoch indicators as well if you want to.*



Notice how the first 4 support lines at one point pushed the prices up and how at another point pushed the prices lower. look at point 5 and 6. I mapped these lines to find a good entry point this week. To be honest with you guys I have been trading this method for the last 7 months and i bearyl have any losing trades.



USDJPY,H4 118.58 118.59 118.40 118.48

these are a couple fo Recent entry positions given by the system

40 to 60 pips daily. with this system  
you can get as greedy as you want

*Even thou I don't recommend getting too greedy*

#3982576 sell

buy  
%R(14) -81.8966

mid

sell

sell  
Stoch(5,3,3) 32.8125 25.1504

mid

buy



**I HOPE I PROVIDED YOU WITH SOME UNDERSTANDING OF THE STRATEGY I  
USE HEY TEST IT OUT MAKE ARRANGEMENTS TO IT AND SHARE IT....**