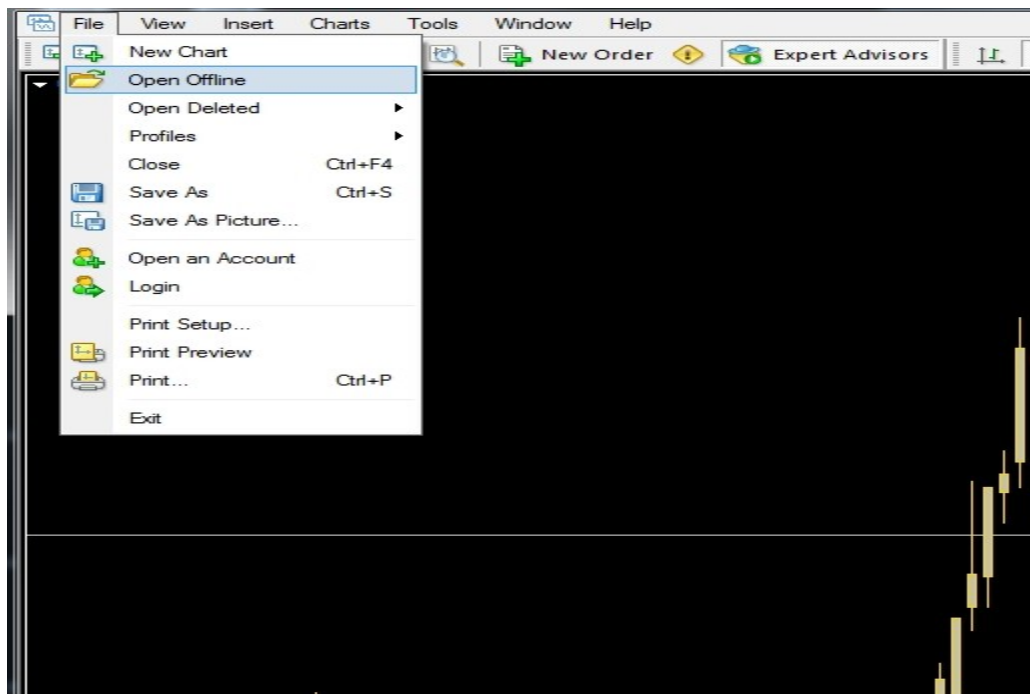




- 8) Restart your MT4 software.
- 9) To start trading live, use the Hot Key **Ctrl+9** and click the YES button in the window that opens. If you want to stop trading live use the Hot Key **Ctrl+9** and click the NO button in the window that opens.

Quick Start for different pairs Basket setups:

- 1) Start up your MT4 platform
- 2) Open a M1 chart of USDJPY
- 3) Attach the **Basket_Multi_indy_ET** indicator to this chart to this chart.
- 4) Set up this indicator for the pairs and time frame you want to use.
- 5) Go to the "File" tab of MT4 and pull it down and click on "Open Offline"



- 6) From the window that then opens, double click the #offline chart# you just created.
- 7) A new “Offline Chart” should now open on your screen.
- 8) Attach your indicators and the EA to this chart and set it up the way you want, be sure to set the pairs and time frame in the EA to the same ones used to create the offline chart it is on. You can also save a template of this setup if you want to.
- 9) Restart your MT4 software.
- 10) To start trading live, use the Hot Key **Ctrl+9** and click the YES button in the window that opens. If you want to stop trading live use the Hot Key **Ctrl+9** and click the NO button in the window that opens.

This EA uses Hot Keys rather than the Buttons, which makes it more cpu friendly and less troublesome. You will also notice that information has been added to the display on the right side of the chart to show you what the status of some of the EA functions are and also what some of the settings are, in case you have forgotten what you set them at in the EA properties window. There is also a help menu on the left side of the chart to remind you what the Hot Keys do, you can disable this in the EA properties if you don't want to see it.

Here are the different types of entries that the EA can use:

Entry 1