

Getting Started

BT_14_v2nb Basket EA

It is assumed that before you start here that you have placed all the files located in the zip folder into their respective folders.

This EA will run on any period offline chart.

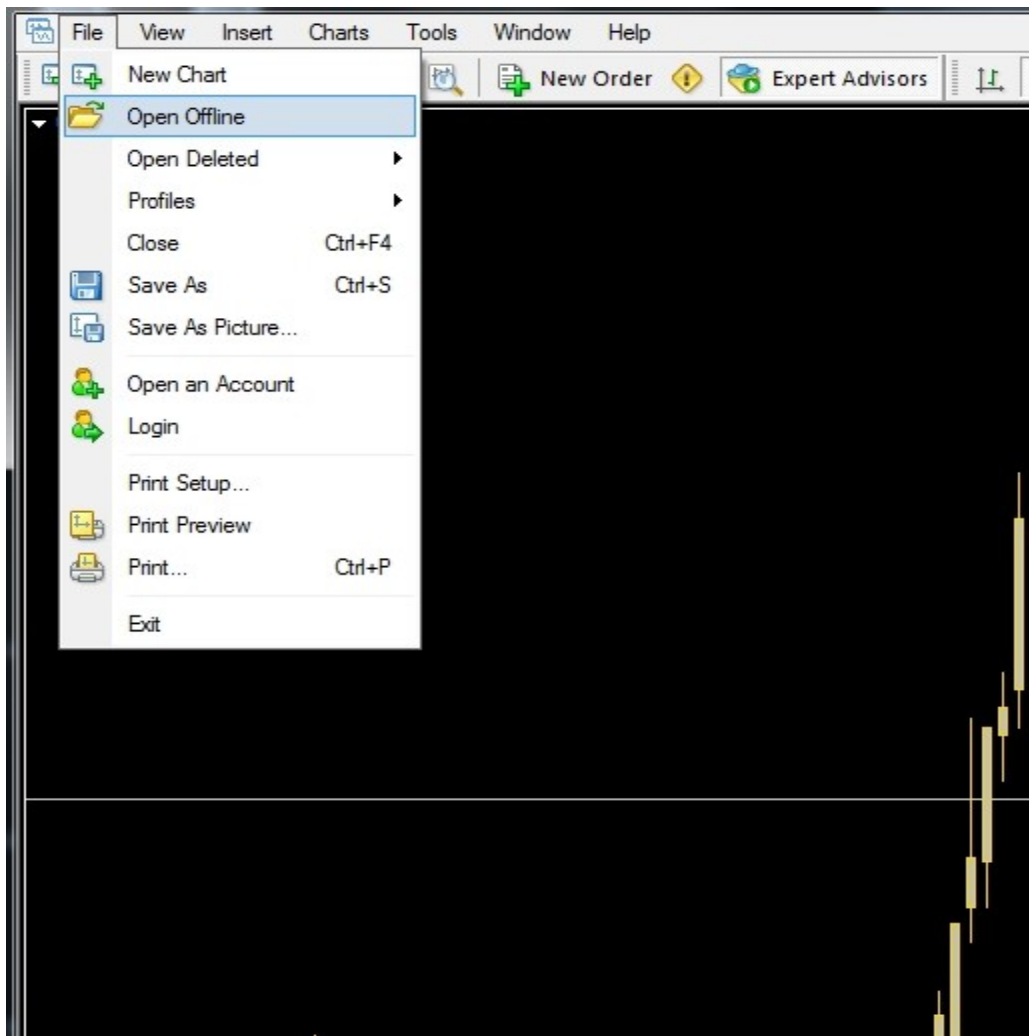
You only need 2 charts open for it to work, a single pair M1 chart where you place your offline chart generator indy and the offline chart where you attach the EA.

You can create your own basket with other indicators found on different forums if you like, just make sure the pairs that are in the "Offline" basket chart are the same ones you are using in the EA, you can use from 2 to 14 pairs in the EA.

Quick Start for 14 pair Basket setup:

USDCHF,GBPCHF,EURJPY,GBPJPY,NZDUSD,EURGBP,GBPUSD,EURUSD,USDJPY,AUDUSD,NZDJPY,AUDJPY,CHFJPY,EURCHF

- 1) Start up your MT4 platform
- 2) Open a M1 chart of USDJPY
- 3) Attach the **Uj_h1_14P** template to this chart.
- 4) Go to the "File" tab of MT4 and pull it down and click on "Open Offline"



5) From the window that then opens, double click the **#BT#14,H1** chart.

